



## **Unboxing and Tutorial of PoE IP System**

<b>Title:</b>	Unboxing and Tutorial of PoE IP System	<b>Version:</b>	v1.0	<b>Date:</b>	11/04/2020
<b>Product:</b>	NVR, Camera			<b>Page:</b>	1 of 17

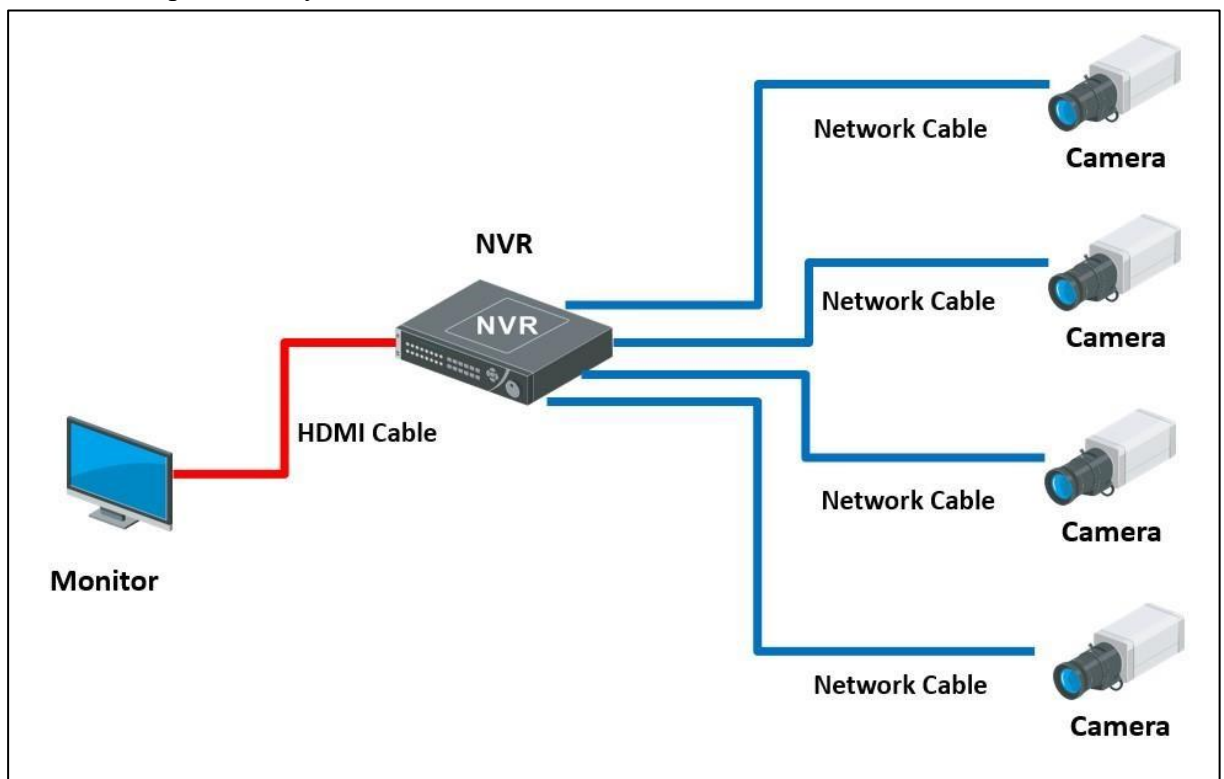
## Preparation

1. PoE NVR, IP camera
2. Memory card, waterproof tape, HDD, HDMI cable, Network cables, Monitor.

## Unboxing and Tutorial of PoE IP System

### 1. Topology

When build an IP system via PoE Connection, you will need PoE NVR and PoE cameras. Cameras are powered by PoE.



### 2. Unboxing

<b>Title:</b>	Unboxing and Tutorial of PoE IP System	<b>Version:</b>	v1.0	<b>Date:</b>	11/04/2020
<b>Product:</b>	NVR, Camera			<b>Page:</b>	2 of 17

Take out the NVR, accessories and cameras from the box, prepare the memory card,

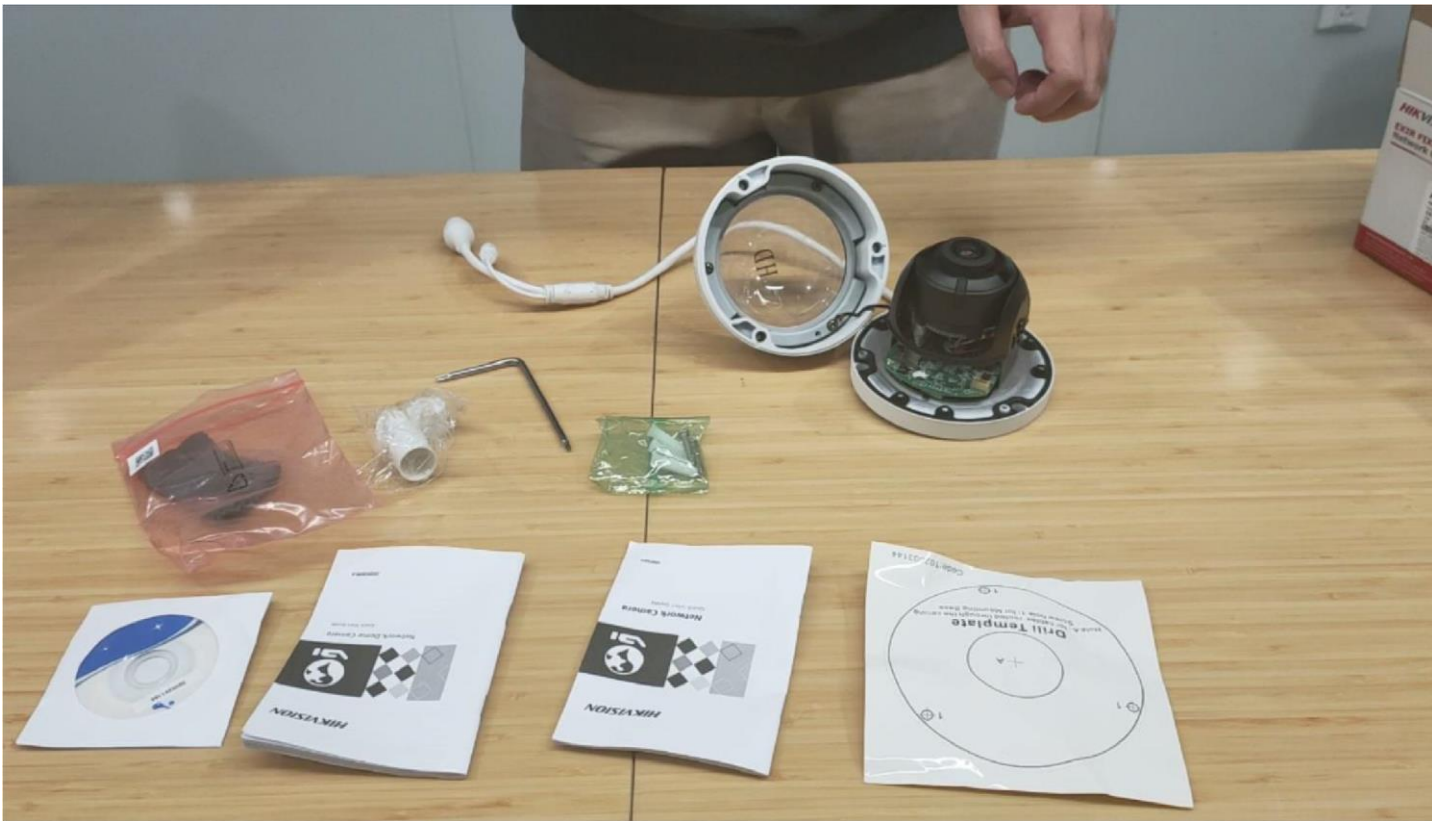


waterproof tape, HDD, network cables, HDMI cable and monitor.

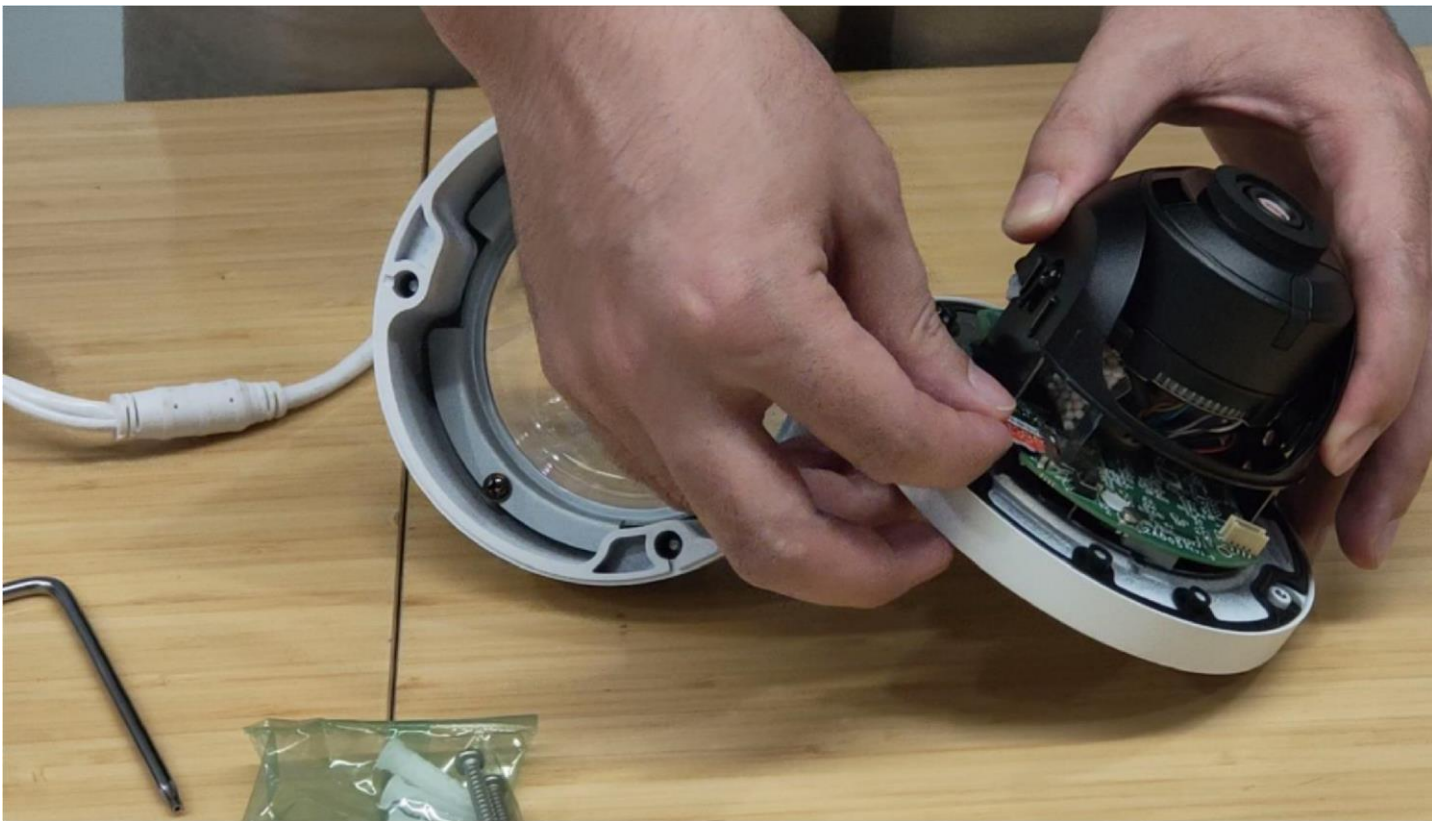
### **3. Installation camera**

- a) Loosen screws and remove the bubble of camera.

<b>Title:</b>	Unboxing and Tutorial of PoE IP System	<b>Version:</b>	v1.0	<b>Date:</b>	11/04/2020
<b>Product:</b>	NVR, Camera			<b>Page:</b>	3 of 17



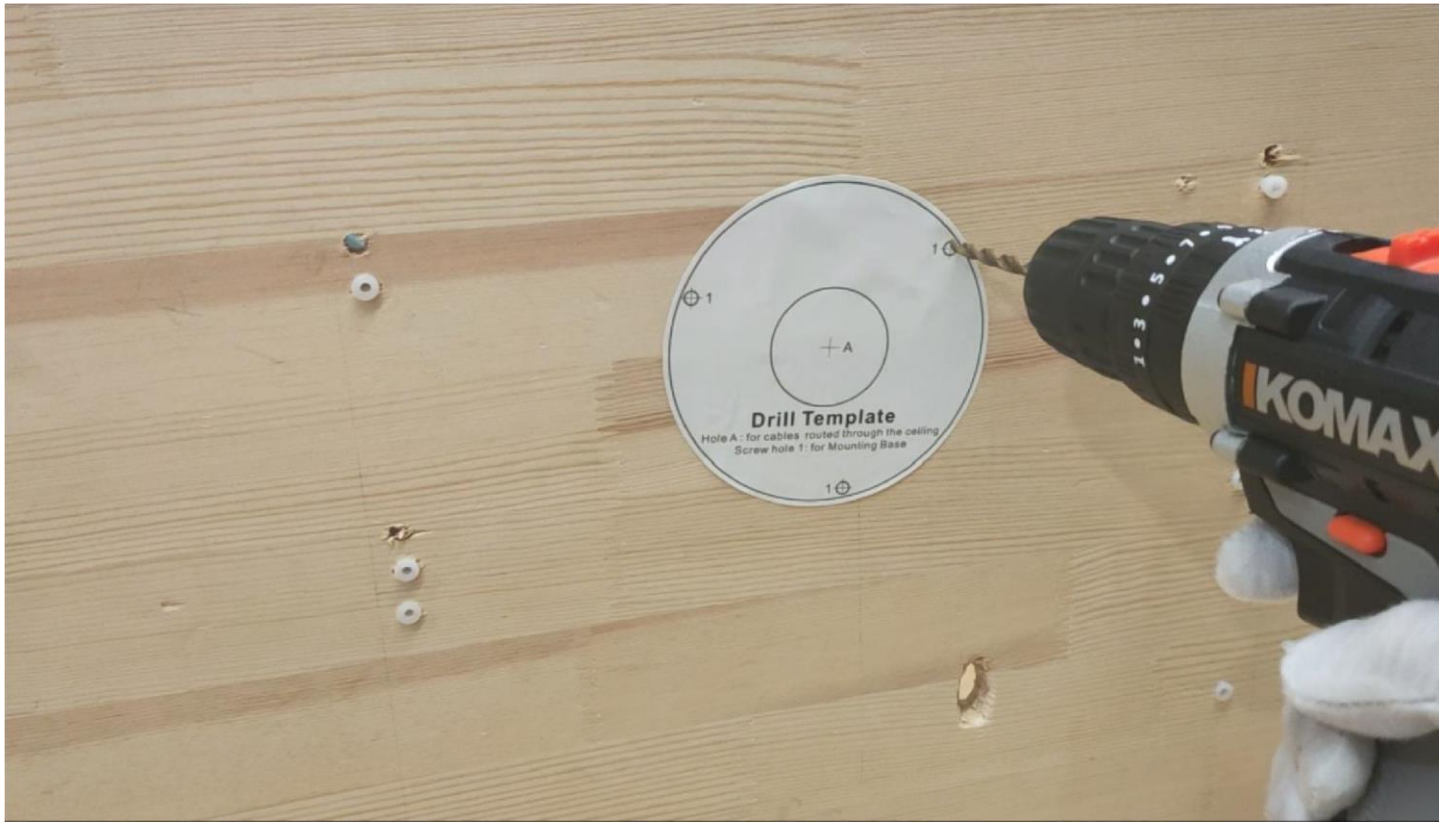
b) Install memory card





<b>Title:</b>	Unboxing and Tutorial of PoE IP System	<b>Version:</b>	v1.0	<b>Date:</b>	11/04/2020
<b>Product:</b>	NVR, Camera			<b>Page:</b>	4 of 17

c) Paste the Drill Template to the wall or ceil and follow the prompt to drill screw hole



d) Drive in the expansion screw to the screw hole



<b>Title:</b>	Unboxing and Tutorial of PoE IP System	<b>Version:</b>	v1.0	<b>Date:</b>	11/04/2020
<b>Product:</b>	NVR, Camera			<b>Page:</b>	5 of 17

e) Fix the camera to the wall or ceil with screw



f) Adjust the lens angel.



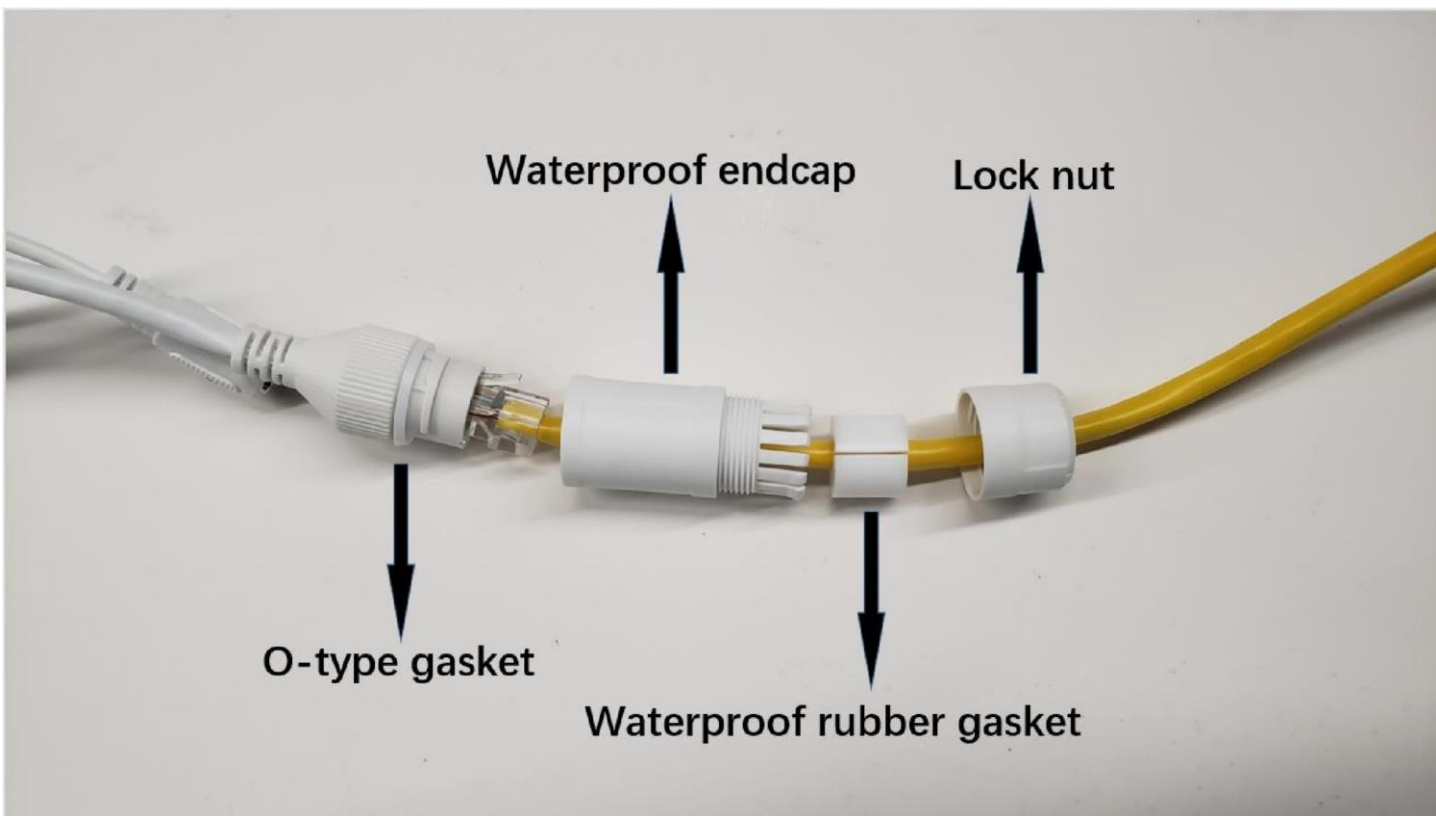


<b>Title:</b>	Unboxing and Tutorial of PoE IP System	<b>Version:</b>	v1.0	<b>Date:</b>	11/04/2020
<b>Product:</b>	NVR, Camera			<b>Page:</b>	6 of 17

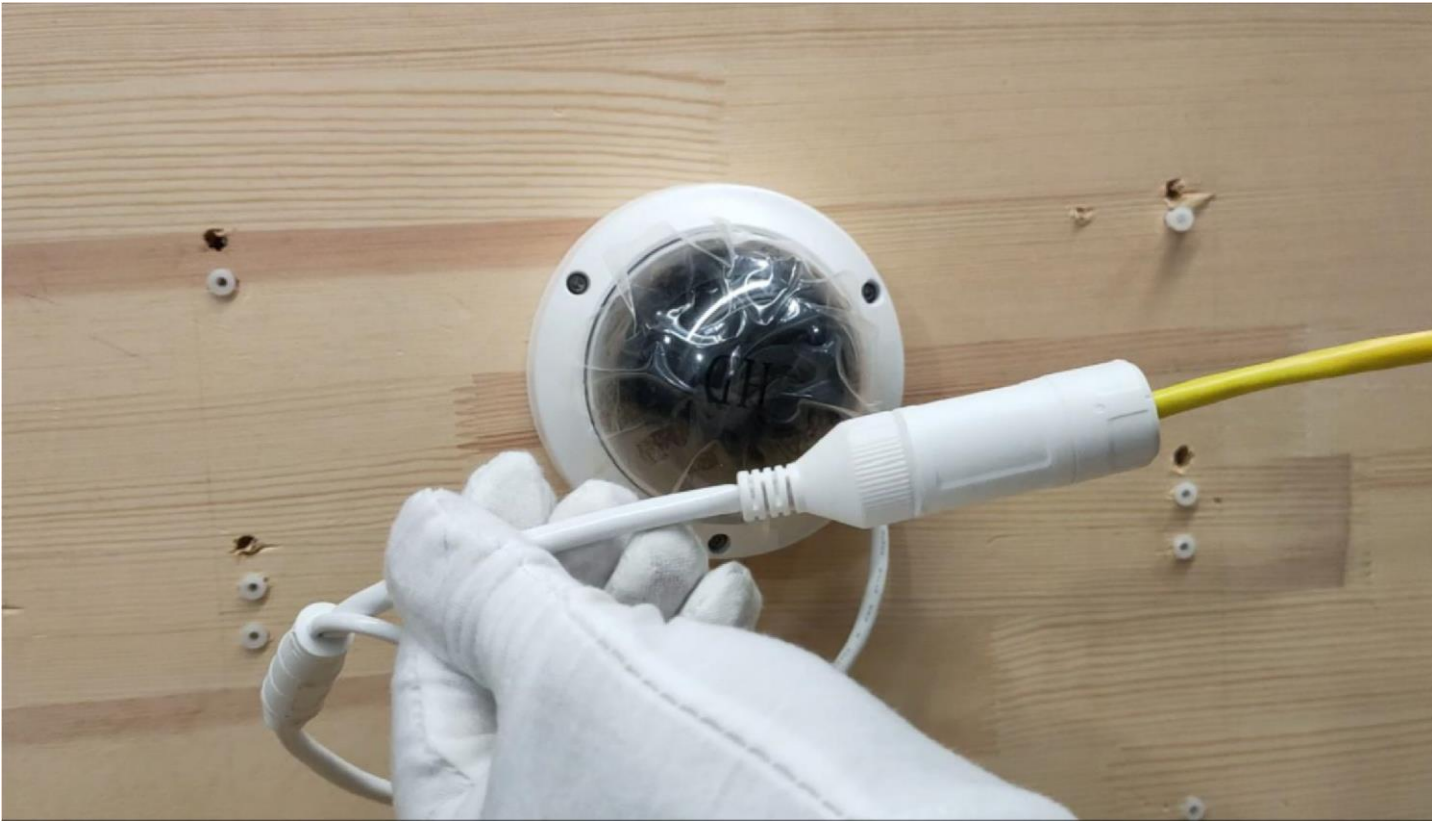
g) Close up the bubble



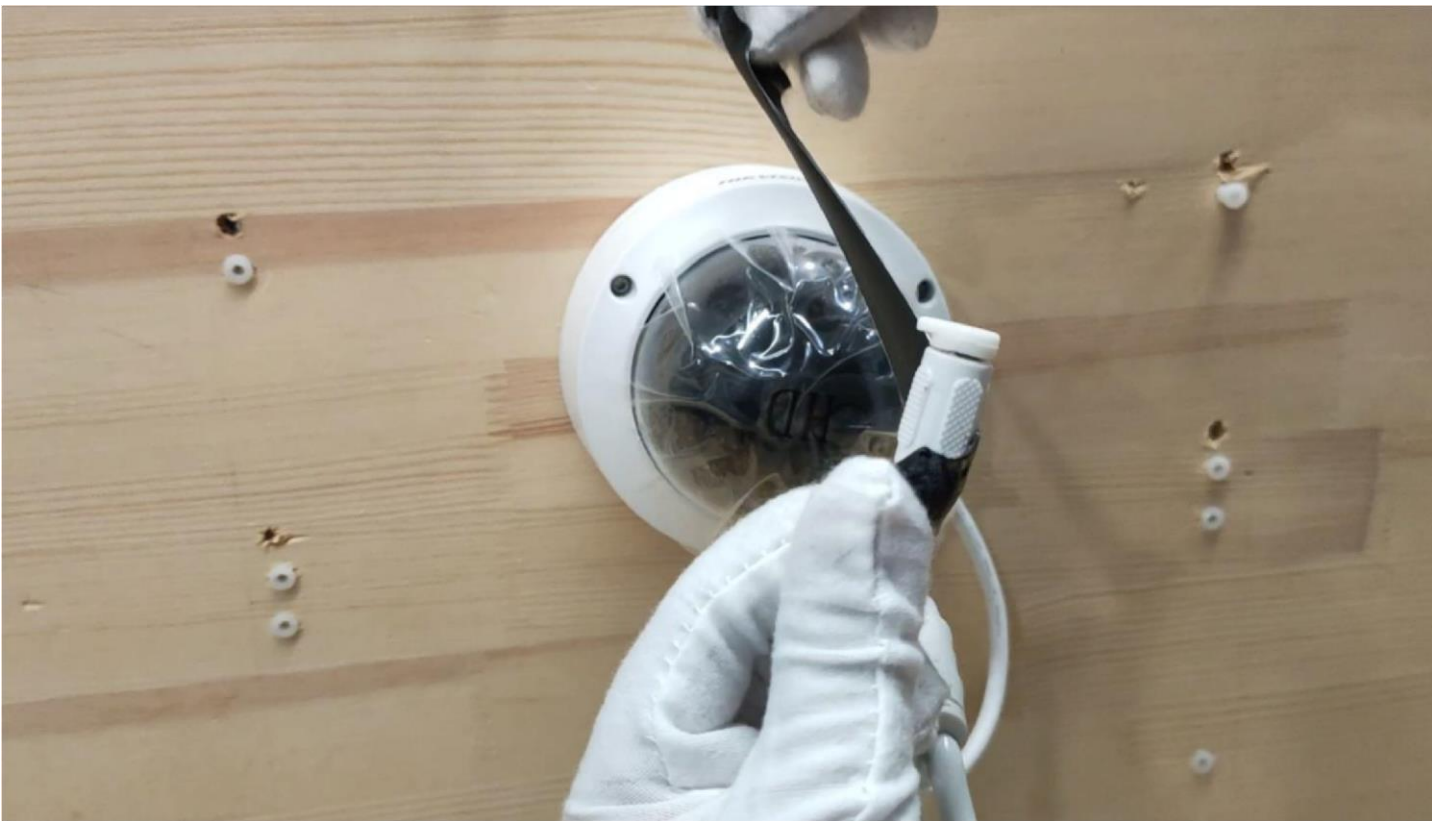
h) Install the waterproof jacket



<b>Title:</b>	Unboxing and Tutorial of PoE IP System	<b>Version:</b>	v1.0	<b>Date:</b>	11/04/2020
<b>Product:</b>	NVR, Camera			<b>Page:</b>	7 of 17



i) Wrap waterproof tape around the power cable





<b>Title:</b>	Unboxing and Tutorial of PoE IP System	<b>Version:</b>	v1.0	<b>Date:</b>	11/04/2020
<b>Product:</b>	NVR, Camera			<b>Page:</b>	8 of 17



**Note: Waterproof protection is a must!**

- j) Remove protective film

<b>Title:</b>	Unboxing and Tutorial of PoE IP System	<b>Version:</b>	v1.0	<b>Date:</b>	11/04/2020
<b>Product:</b>	NVR, Camera			<b>Page:</b>	9 of 17



#### **4. Install HDD into NVR**

- a) Loosen screws and remove cover of NVR

<b>Title:</b>	Unboxing and Tutorial of PoE IP System	<b>Version:</b>	v1.0	<b>Date:</b>	11/04/2020
<b>Product:</b>	NVR, Camera			<b>Page:</b>	10 of 17



b) Connect cables to HDD





<b>Title:</b>	Unboxing and Tutorial of PoE IP System	<b>Version:</b>	v1.0	<b>Date:</b>	11/04/2020
<b>Product:</b>	NVR, Camera			<b>Page:</b>	11 of 17

c) Fix HDD to NVR bottom



<b>Title:</b>	Unboxing and Tutorial of PoE IP System	<b>Version:</b>	v1.0	<b>Date:</b>	11/04/2020
<b>Product:</b>	NVR, Camera			<b>Page:</b>	12 of 17



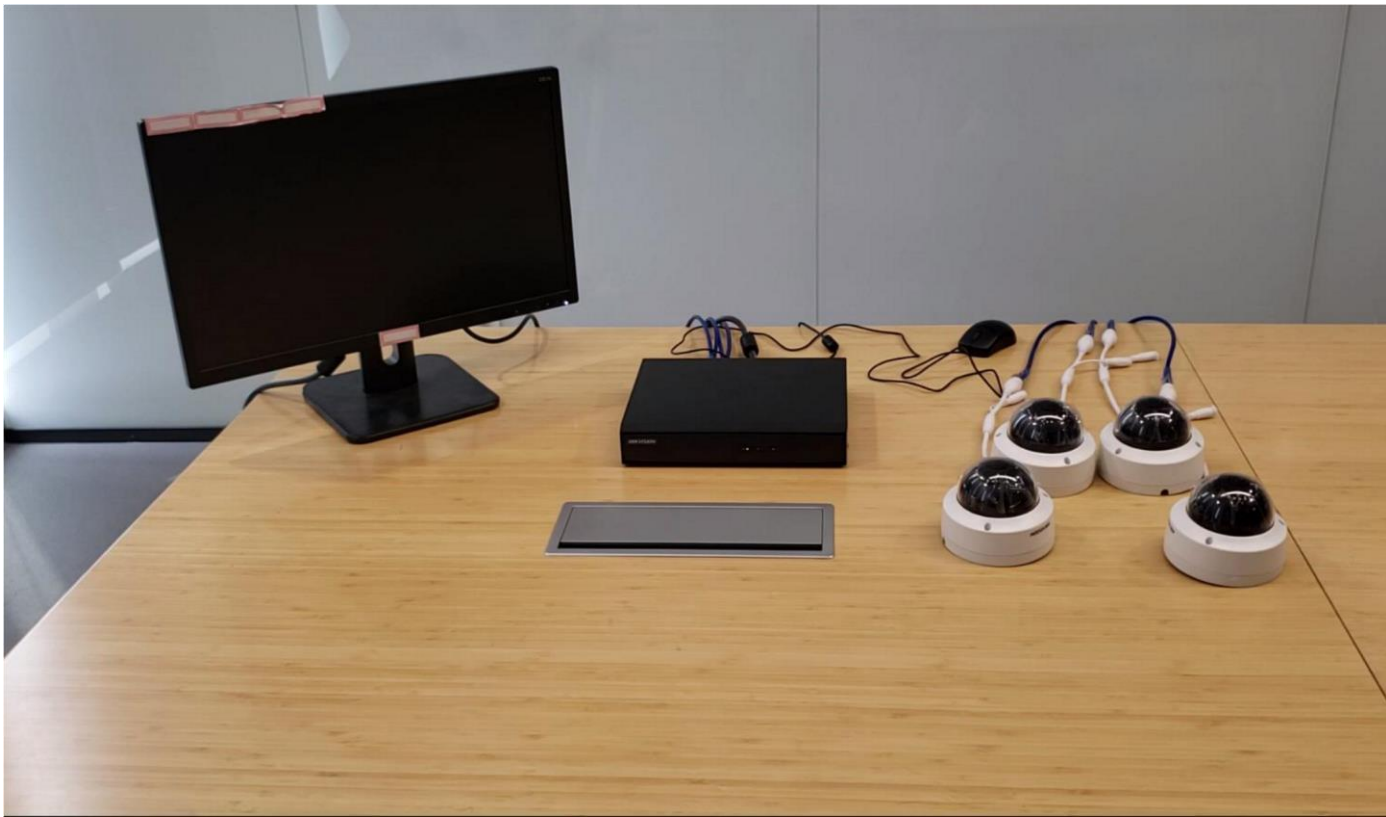
- d) Connect cables to NVR
- e) Install the cover back **Note: The HDD model should in the HDD Compatible List**

## 5. Connection

- a) Connect the cameras to the PoE interfaces of the NVR with the network cables.
- b) Connect the NVR to a monitor with the HDMI cable.
- c) Connect the power adaptor and the mouse.

**Note: The network cable between NVR and camera should within 100 meters!**

<b>Title:</b>	Unboxing and Tutorial of PoE IP System	<b>Version:</b>	v1.0	<b>Date:</b>	11/04/2020
<b>Product:</b>	NVR, Camera			<b>Page:</b>	13 of 17



## 6. Configuration

- a) Power up the NVR and the monitor. Input the admin password twice and the IP camera activation password.

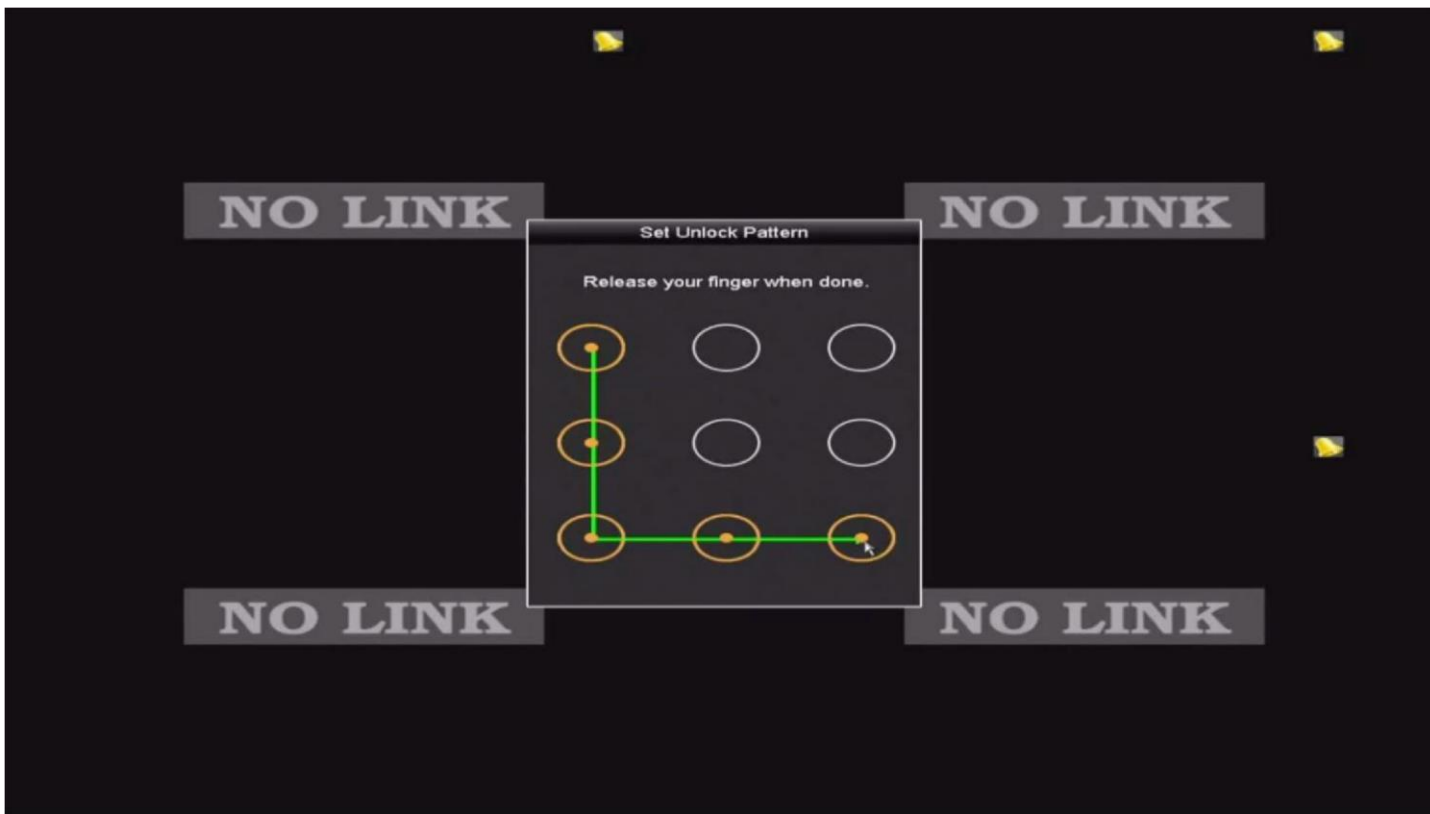
**Note: The camera should in Inactive status or share the same password with NVR!**



<b>Title:</b>	Unboxing and Tutorial of PoE IP System	<b>Version:</b>	v1.0	<b>Date:</b>	11/04/2020
<b>Product:</b>	NVR, Camera			<b>Page:</b>	14 of 17




b) Set the unlock pattern, select the system language.



c) Set time and check the checkbox of Initialize HDD, click Next, then exit the Wizard

<b>Title:</b>	Unboxing and Tutorial of PoE IP System	<b>Version:</b>	v1.0	<b>Date:</b>	11/04/2020
<b>Product:</b>	NVR, Camera	<b>Page:</b>	15 of 17		



- d) Live view of the network cameras will start to show on the monitor after about 30 seconds and all cameras will be recorded to the HDD. The  in the live view image means this channel is recording video.



**Note: The default Record Schedule type is Continuous and Record Schedule time is 7\*24.**

## 7. Check List

No.	Details	Yes/No?
-----	---------	---------

<b>Title:</b>	Unboxing and Tutorial of PoE IP System	<b>Version:</b>	v1.0	<b>Date:</b>	11/04/2020
<b>Product:</b>	NVR, Camera			<b>Page:</b>	16 of 17

1	Are the camera network cable and power cord waterproof?	
2	Are all cameras online?	
3	Are all cameras live view normal?	
4	Is the status of HDD normal?	
5	Are all camera videos playback normal?	

## 8. FAQ

- a) What can I do when NVR live view interface shows NO LINK?
  - Check the online status of camera on Camera Management interface, insure the camera is online;
  - Check the Live View setting on Configuration—Live View—View interface, insure the channel live view setting is normal.
- b) What can I do when camera shows offline on NVR?
  - Check the Status of camera on Camera Management interface, if it shows *The user name or the password is wrong*, change the channel password to camera password; ● If it shows *IP camera does not exist*, check the PoE port status on Camera Management—Camera—PoE Configuration interface, insure the camera power supply is normal;
  - If the power supply is abnormal, try to re-plug the network cable in PoE port or change the network cable
- c) What can I do when live view interface shows unsupported stream type?
  - Change the encode type of camera sub stream from MJPEG to H.265 or H.264.
- d) What can I do when play back interface shows no video file?
  - Check the status of HDD on HDD interface, if it shows uninitialized, initialize the HDD;
  - Check the record schedule on Record—Schedule interface, if the record schedule is empty, set the record schedule.





See Far, Go Further