

Title:	How to Set Wi-Fi Function for HIKVISION Wi-Fi Camera	Version:	v1.0	Date:	11/29/2018
Product:	Wi-Fi Cameras			Page:	1 of 3

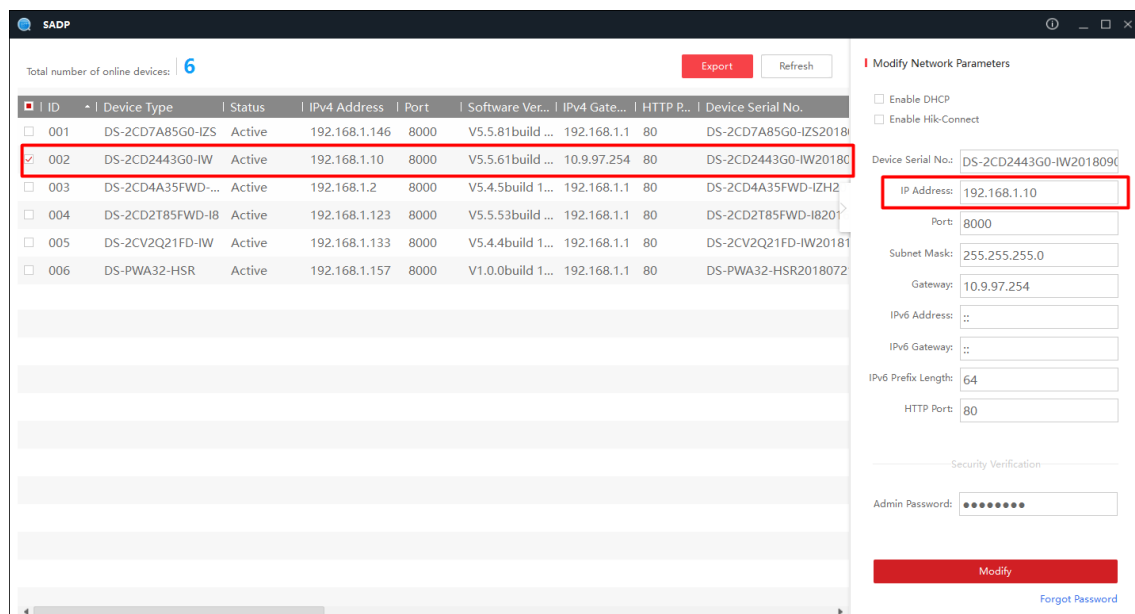
Preparation

Wi-Fi Router

How to Set Wi-Fi Function for HIKVISION Wi-Fi Camera

1) Set LAN IP

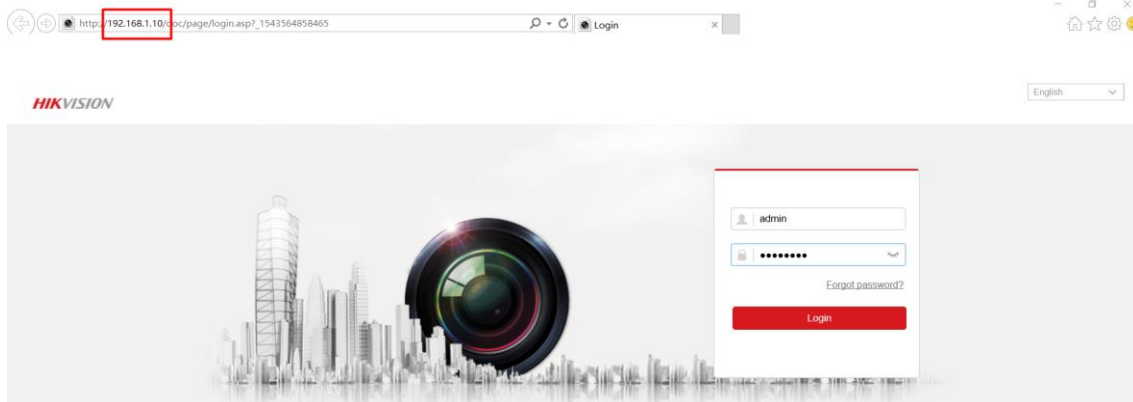
- 1) Plug the camera and PC to same router. Run **SADP** software and then all IP cameras in same LAN will be shown in software. Set the IP address for camera(Such as 192.168.1.10)



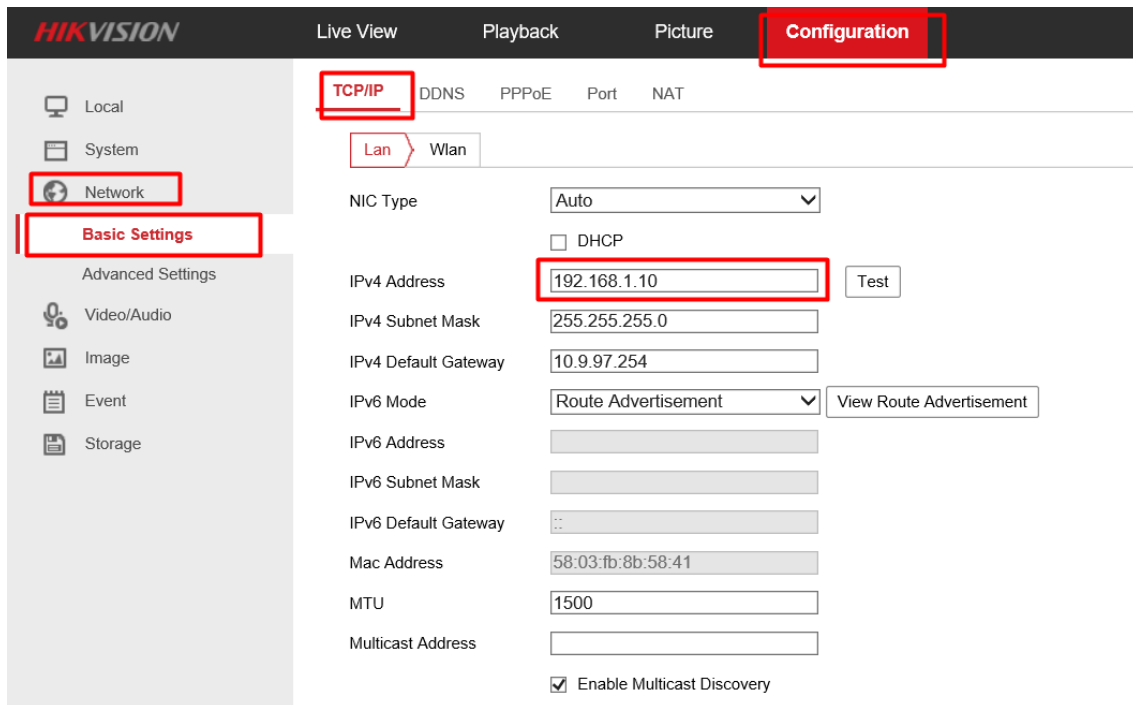
2) Set WLAN IP

- 1) Input the IP address (192.168.1.10) in IE browser to login it.

Title:	How to Set Wi-Fi Function for HIKVISION Wi-Fi Camera	Version:	v1.0	Date:	11/29/2018
Product:	Wi-Fi Cameras			Page:	2 of 3



- 2) Go to **Configuration**> **Network**> **TCP/IP**. And then we can check the IP of LAN. It is 192.168.1.10



- 3) Go to **Configuration**> **Network**> **Advanced Settings**> **Wi-Fi**, and then click Search. We can search all Wi-Fi router nearby. Please select the Wi-Fi router and then type in the right parameters of Wi-Fi router. And then click **Save**.

Title:	How to Set Wi-Fi Function for HIKVISION Wi-Fi Camera	Version:	v1.0	Date:	11/29/2018
Product:	Wi-Fi Cameras			Page:	3 of 3

Configuration

SNMP FTP Email Platform Access HTTPS QoS **Wi-Fi** Integration Protocol Network Service

Enable

No.	SSID	Working Mode	Security Mode	Channel	Signal Strength	Speed(Mbps)	Connection Status
1	TP-LINK_2.4G	Manage	WPA2-personal	1	100	150	Connected
2	HIK-Office	Manage	WPA2-personal	1	100	150	Disconnected
3	TPGuest017B	Manage	WPA2-personal	1	100	150	Disconnected
4	HIK-Office	Manage	WPA2-personal	6	98	150	Disconnected
5	HIK-Office	Manage	WPA2-personal	1	92	150	Disconnected
6	HIKVISION	Manage	not-encrypted	6	92	150	Disconnected
7	HIK-Office	Manage	WPA2-personal	11	84	150	Disconnected
8	HIK-Office	Manage	WPA2-personal	6	82	150	Disconnected
9	HIK-Office	Manage	WPA2-personal	11	76	150	Disconnected
10	你已进入监控区域	Manage	WPA2-personal	2	72	150	Disconnected
11	HIKVISION	Manage	not-encrypted	6	72	150	Disconnected
12	HIK-Office	Manage	WPA2-personal	1	68	150	Disconnected
13	chang_tp	Manage	WPA2-personal	8	62	150	Disconnected

Wi-Fi

SSID: TP-LINK_2.4G

Network Mode: Manage

Security Mode: WPA2-personal

Encryption Type: TKIP

Key 1: ●●●●●●●●
8 to 63 ASCII characters or 8 to 64 hexadecimal characters

4) Go to **Configuration**> **Network**> **Basic Settings**> **TCP/IP**> **Wlan**. And then we can set IP of WLAN to be 192.168.1.155.

Configuration

TCP/IP DDNS PPPoE Port NAT

Lan **Wlan**

DHCP

IPv4 Address: 192.168.1.155

IPv4 Subnet Mask: 255.255.255.0

IPv4 Default Gateway: 192.168.1.1

Mac Address: d0-c5-d3-81-c0-47

Multicast Address:

Enable Multicast Discovery

DNS Server

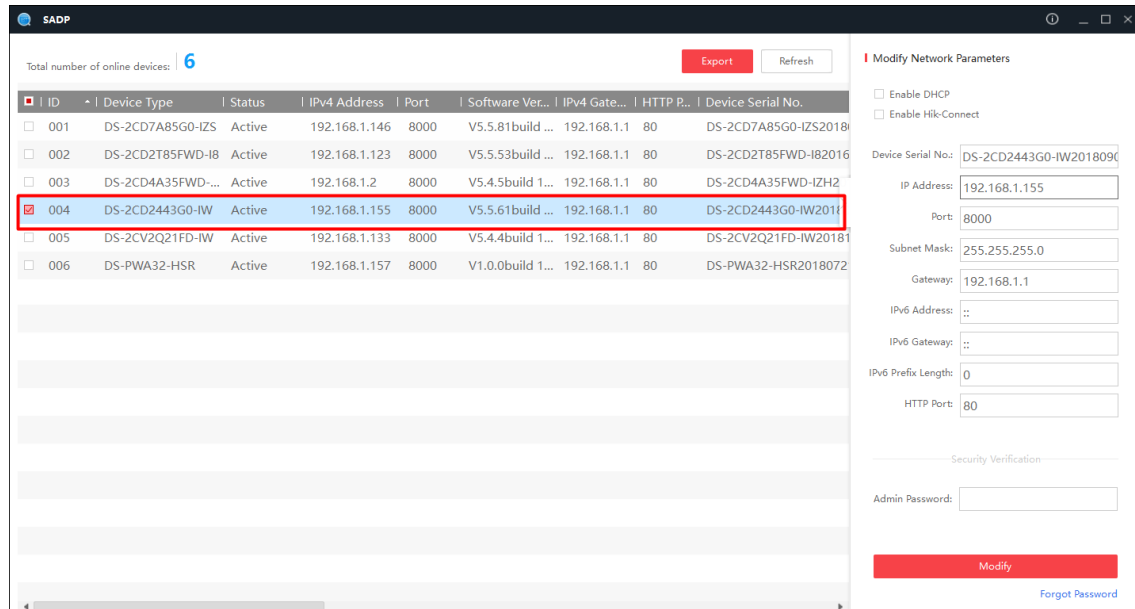
Preferred DNS Server: 8.8.8.8

Alternate DNS Server:

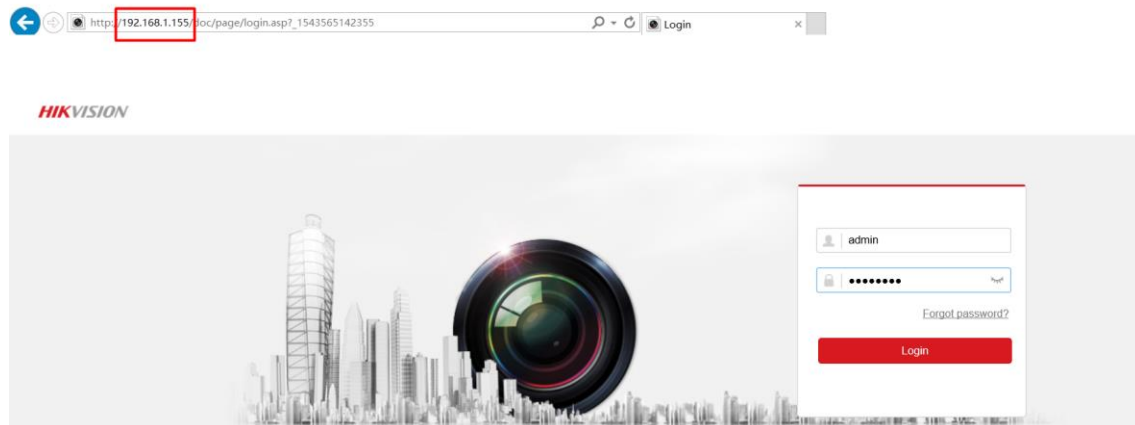
Title:	How to Set Wi-Fi Function for HIKVISION Wi-Fi Camera	Version:	v1.0	Date:	11/29/2018
Product:	Wi-Fi Cameras			Page:	4 of 3

3) Login camera via WLAN

- 1) Unplug the cable between camera and router. When we run the SADP, the WLAN IP will be shown in software

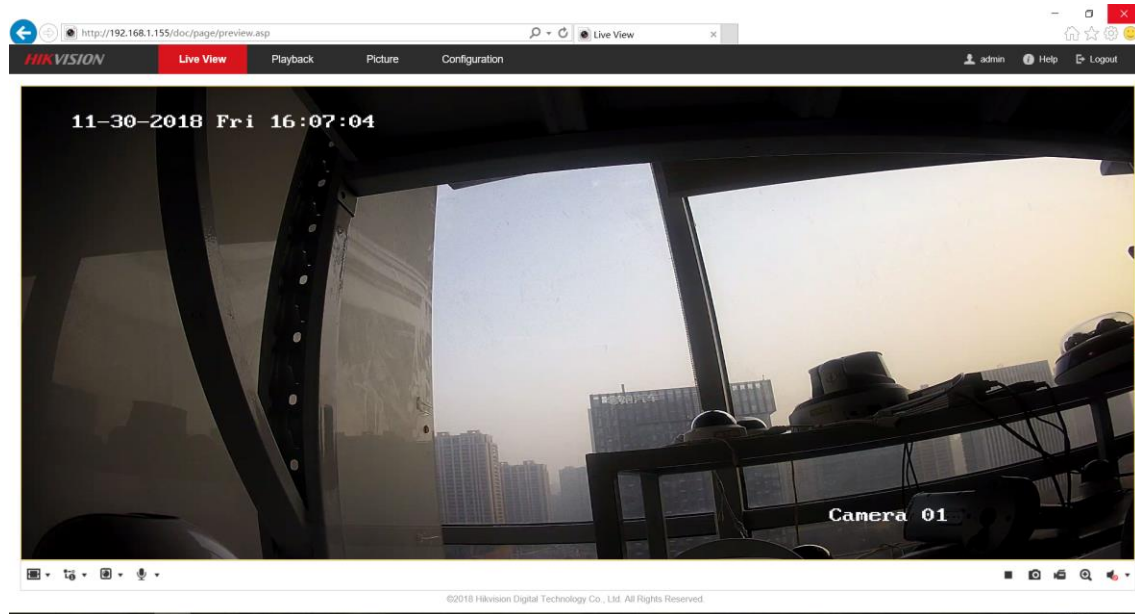


- 2) Type in the WLAN IP (192.168.1.155) to IE browser, we can login the IP camera by Wi-Fi.



- 3) We can have a live view of camera

Title:	How to Set Wi-Fi Function for HIKVISION Wi-Fi Camera	Version:	v1.0	Date:	11/29/2018
Product:	Wi-Fi Cameras			Page:	5 of 3





Title:	How to Set Wi-Fi Function for HIKVISION Wi-Fi Camera	Version:	v1.0	Date:	11/29/2018
Product:	Wi-Fi Cameras			Page:	6 of 3

First Choice for Security Professionals
***HIKVISION* Technical Support**