

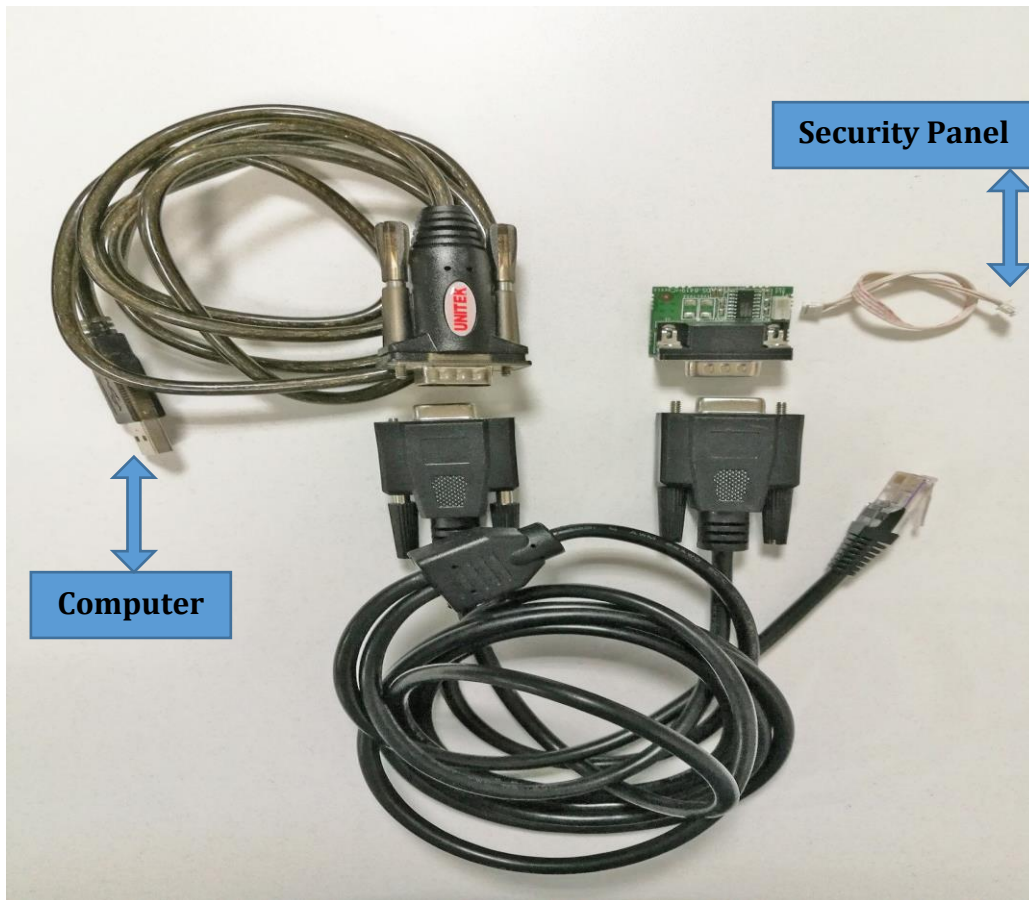
Title:	How to Upgrade Security Control Panel by RS232 Cable	Version:	v1.0	Date:	2017/12/28
Product:	Alarm Device	Page:	1 of 4		

Description

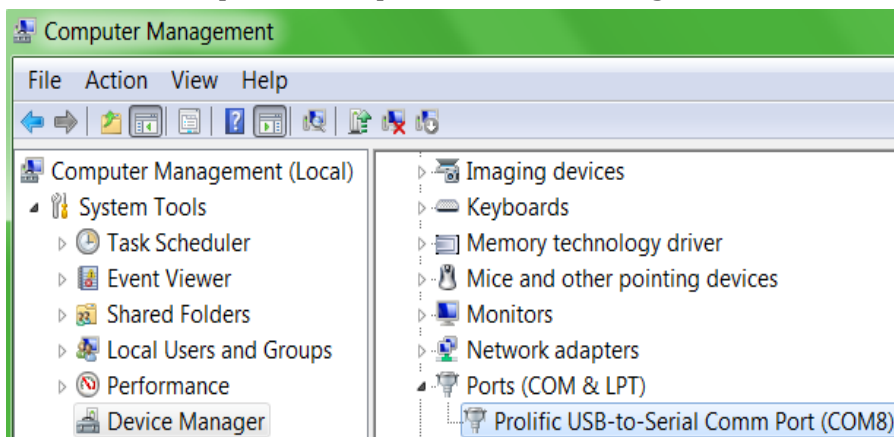
When security control panel can't be searched in SADP, can't ping IP successfully or the device is crashed. In this situation, security control panel need to be upgraded by RS232 cable.

Steps

1. Connect laptop USB port with security control panel by RS232 cable.



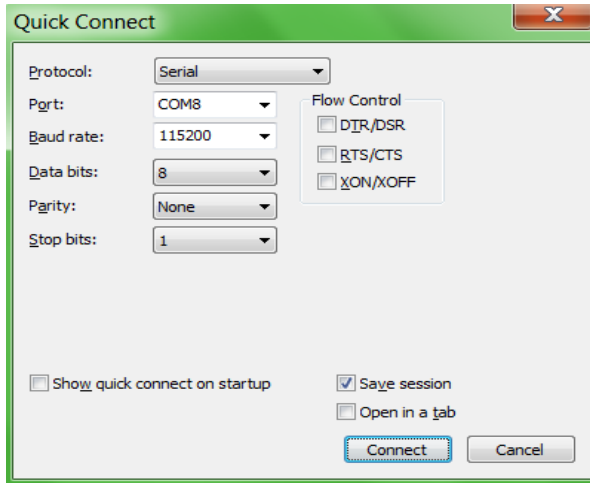
2. Check the COM port in computer's device management.



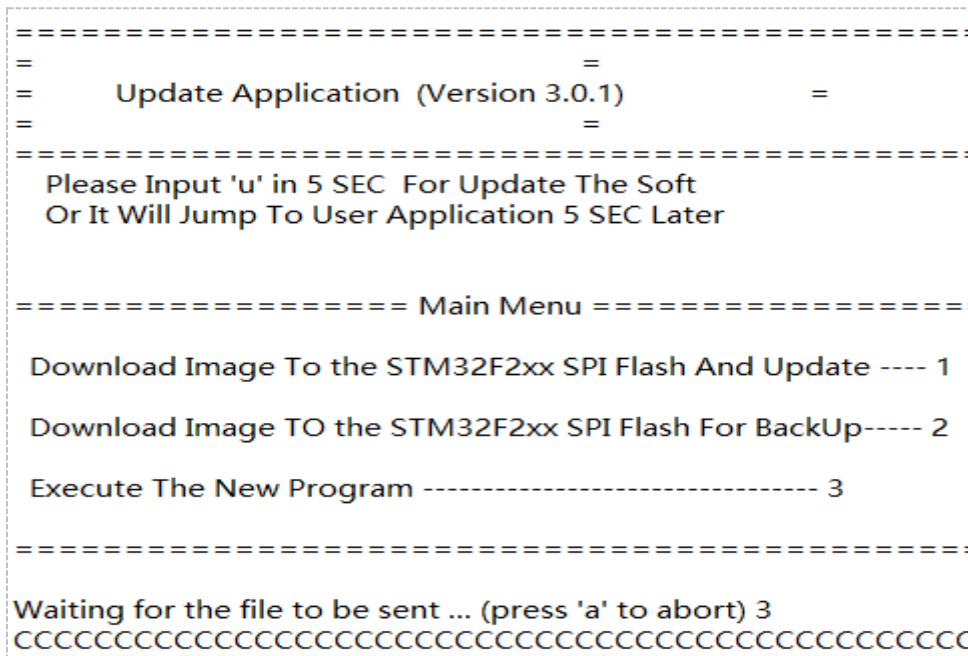
Title:	How to Upgrade Security Control Panel by RS232 Cable	Version:	v1.0	Date:	2017/12/28
Product:	Alarm Device	Page:	2 of 4		



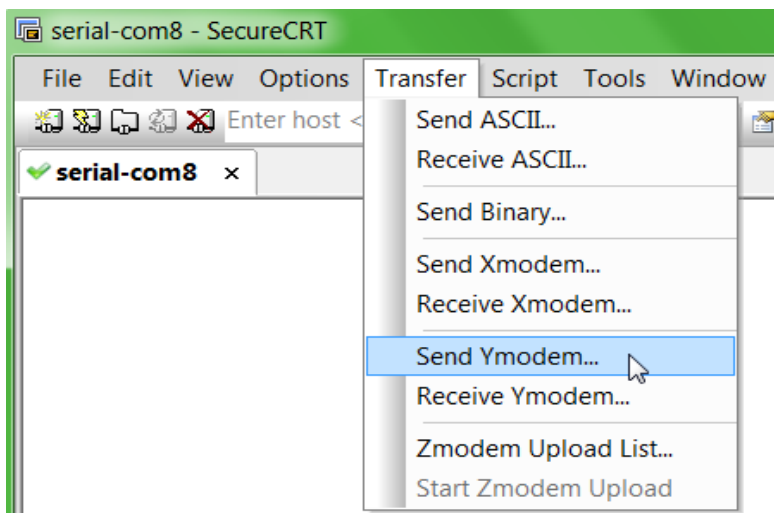
3. Open SecureCRT and configure below parameters.



4. Reboot network alarm panel. Press U within 5 seconds. And Input 1 for update firmware. It will show Waiting for the file to be sent:



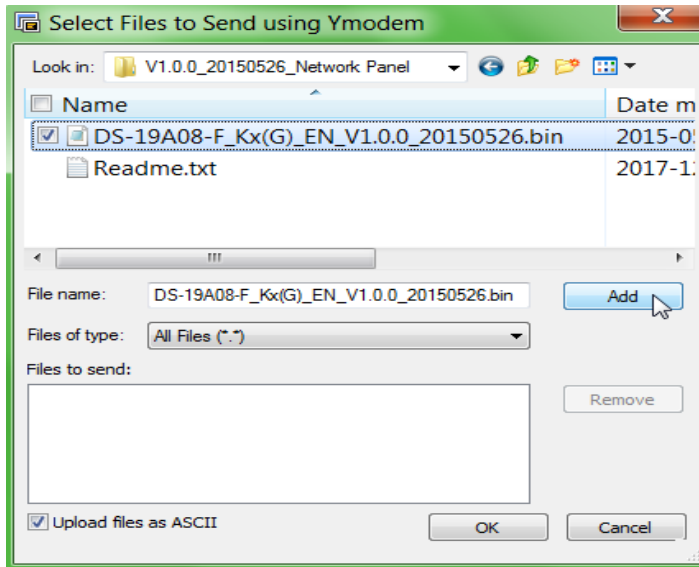
5. Choose “Send Yodem” as shown in below image.



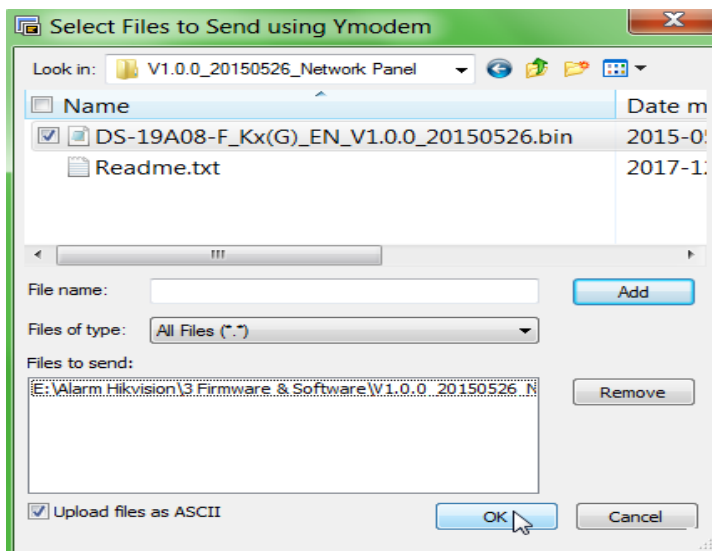
Title:	How to Upgrade Security Control Panel by RS232 Cable	Version:	v1.0	Date:	2017/12/28
Product:	Alarm Device	Page:	3 of 4		



6. Choose Firmware and Add to transfer list.



7. Click OK to start transfer.



8. It will upgrade automatically after transfer finished. When showing Program Done, means upgrade finished.

```

Waiting for the file to be sent ... (press 'a' to abort) 3
CCCCCCCCCCCCCCCCCCCCCCCCCCCCCCCCCCCCCCCCCCCCCCCCCCCC
Starting ymodem transfer. Press Ctrl+C to cancel.
100% 421 KB 6 KB/s 00:01:02 0 Errorsn...

e: 431396 Bytes
-----

APP 程序升级开始, 请等待...

Program Done

```

Title:	How to Upgrade Security Control Panel by RS232 Cable	Version:	v1.0	Date:	2017/12/28
Product:	Alarm Device	Page:	4 of 4		



First Choice for Security Professionals
***HIK*VISION Technical Support**