

HIKVISION

Hikvision Manufacturing Solution
Manufacturing a Smarter Future

**Hikvision Manufacturing
Industry Solution**
Manufacturing a Smarter Future



www.hikvision.com
support@hikvision.com



HIKVISION

 **Solutions by Industry**

Who we are

Leading the future of AIoT

Hikvision is committed to serving various industries through its cutting-edge technologies of machine perception, artificial intelligence, and big data, leading the future of AIoT.



Video & Imaging Technology



Multi-Dimensional Perception



Artificial Intelligence

R&D Investment

Over **11%** annual revenue invested in R&D

7,500+ Patents

Almost **1/2** R&D engineers among **58,000+** employees worldwide

Local Service

17 Regional logistics centers

70 After-sales service points covering more than countries or regions.

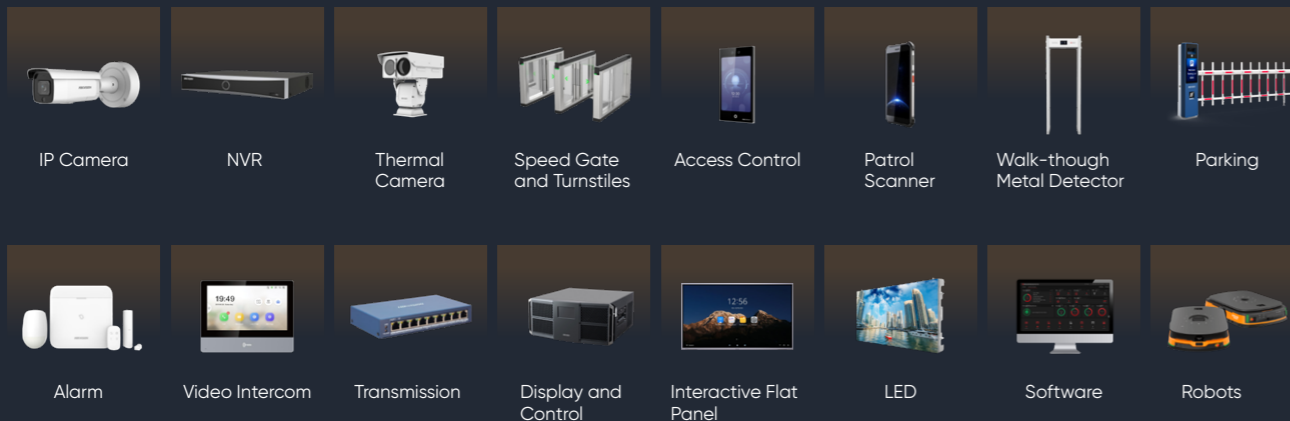
72 Subsidiaries and branch offices globally

100,000+ Partners globally

Our products are used in **150+** countries and regions

Our Products

Nearly 30,000 hardware products and more than 200 software products



How manufacturing is evolving in the digital age?

In the rapidly evolving digital age, manufacturing is undergoing a profound transformation. Advanced technologies are reshaping the industry, and manufacturers worldwide are actively seeking innovative ways to optimize production and maximize efficiency.

At Hikvision, we are at the forefront of this digital revolution, specializing in developing cutting-edge solutions that propel manufacturing into the future. Our mission is to seamlessly integrate production factors, streamline processes, and elevate operational efficiency.

Key areas of focus

- Prioritizing the safety of manufacturing plants and staff
- Promoting effective communication between managers and employees
- Enhancing operators' skills and efficiency
- Minimizing equipment failures and downtime through automation
- Strengthening collaboration between external factors and production processes



Smart Manufacturing Solution Overview

1 Stereoscopic security management

- Perimeter protection
- AR top view
- Key facilities monitoring
- Common area protection
- Patrol management

2 Smooth personnel management

- Visitor management
- Personnel access
- Canteen consumption management
- Access control of key area

3 Efficient vehicle management

- Car entrance & exit management
- Truck management

4 Flexible HR management

- Time & Attendance management

5 Safe production process

- Compliance checks for PPE
- Process visibility

6 Lean workshop production

- AR workshop
- Workshop information sharing
- Workshop inspection
- Facility and equipment maintenance

7 Intelligent logistic management

- Material storage management
- Dock management
- Parcel tracking
- AR warehouse

8 Centralized park management

- All-in-one command center
- Visualized security management
- Multi-park management
- Intuitive system maintenance



Chemical Industry



Vehicle Manufacturing



Electronic Manufacturing



Food Processing



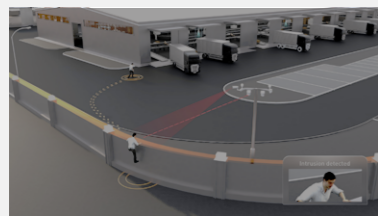
Metals Production



Textiles Production

+ More

1 Stereoscopic Security Management



Perimeter Protection

Our perimeter solution is designed to help you create a secure environment for your employees and protect your valuable assets.

- What we offer**
- Long-range, 24/7 video & audio security protection
 - Real-time and accurate alarm notification
 - Efficient security personnel dispatch

Major Products

3 Solutions

Range: <50m Range: <200m Range: >200m



Optical Camera



Radar & Camera Linkage



Thermal Cameras



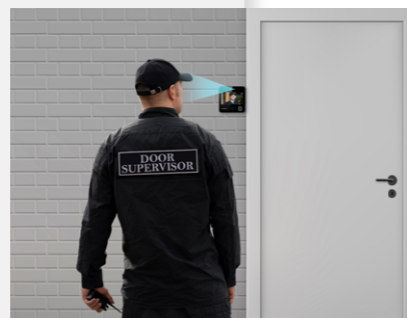
IP Speaker

Patrol Management

Flexible patrol management measures are used to eliminate concealed threats and optimize operations

What we offer

- Online task scheduling for accurate patrol management
- Patrol compliance through QR codes and access control devices
- Post-patrol analysis through diverse reports and records



Major Products



Face Recognition Terminals



Patrol Scanner

AR Top View

Hikvision's AR application combines the big picture and details into one view, taking users one step further towards ultimate protection.



What we offer

- Comprehensive plant situation analysis with AR cameras installed in elevated position
- Holistic insights with the AR dashboard
- Interactive management systems to check and dispatch real-time on-site issues

Major Products



TandemVu PTZ Camera



Panoramic PTZ Camera



PanoVu Camera

Key Facilities Monitoring

With industrial thermography, Hikvision helps operators identify problems earlier with less equipment downtime in applications including pipeline damage, equipment overheat, and more.

What we offer

- Real-time facility temperature measurement to prevent explosions and fires



Major Products



Thermal Camera



Thermal PTZ Camera



Thermography Cube Camera



Explosion-proof Thermal Bullet Camera

Common Area Protection

Hikvision combines AI and thermal technology to add an extra layer of security for common areas in the park.

What we offer

- Park road safety
- Outdoor operation area compliance
- Intrusions and risks prevention within park
- Public office area protection



Major Products



Thermal Cameras



PanoVu Cameras



Fisheye Camera

2 Smooth Personnel Management

Hikvision provides accurate access management for employees and visitors, allowing for smooth movement within the park, while also establishing a secure environment for assets and personnel.



Visitor Management

What we offer

- Efficient visitor registration process
- Non-contact automated access permission
- Seamless access across multiple sites

Major Products



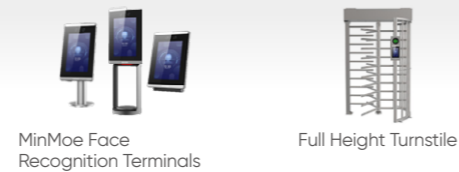
Personnel Access



What we offer

- Smart touch-free access process during peak hours
- Enhanced safety by separate traffic flow

Major Products

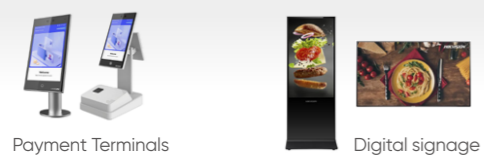


Canteen Consumption Management

What we offer

- Seamless biometric payment for convenient transactions
- Enhanced audit and operational analysis with data-driven insights

Major Products

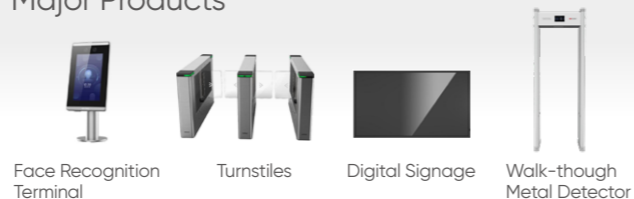


Access Control of Key Area

What we offer

- Robust security inspection measures
- Reliable personnel identity verification
- Intuitive information display for enhanced situational awareness

Major Products



3 Efficient Vehicle Management

Hikvision provides a comprehensive and intelligent E&E system that enhances vehicle security, efficiency, and safety. With our system, you can streamline your fleet management process, reduce risks, and achieve your organizational goals with confidence.

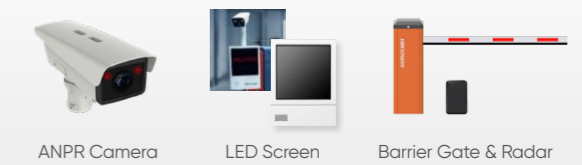
Car Entrance & Exit Management



What we offer

- Automatic Number Plate Recognition (ANPR)
- Vehicle attributes analysis
- Customizable rule setting to meet diverse management needs

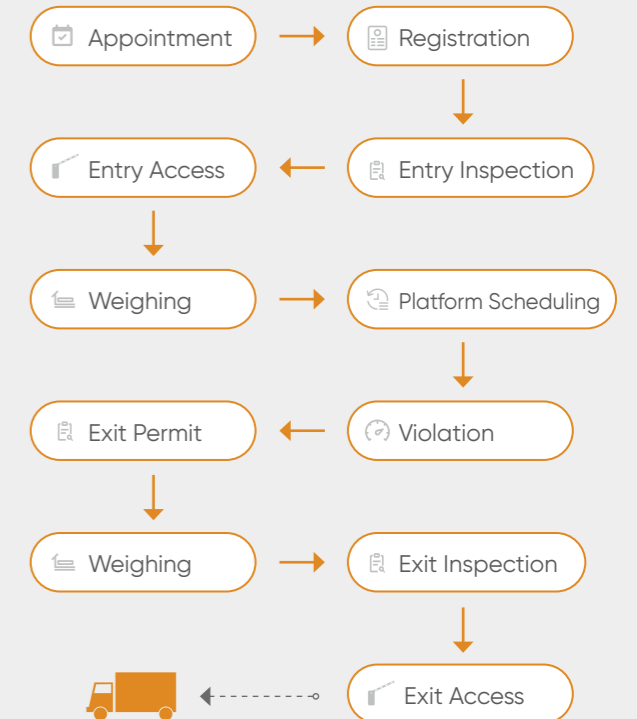
Major Products



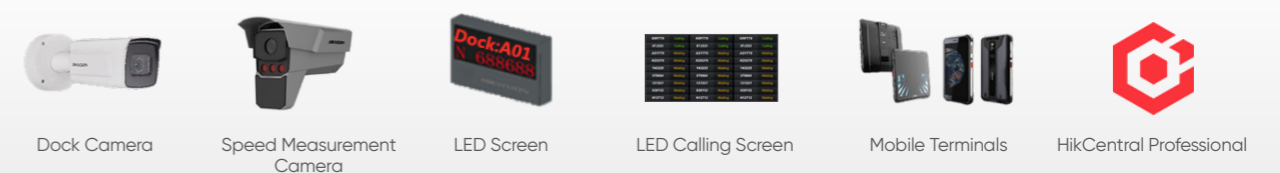
Truck Management

What we offer

- Streamlined appointments for truck entry
- Accurate registration and record-keeping
- Entry inspection to ensure compliance with safety standard
- Authorized entry and exit
- Efficient allocation of loading and unloading tasks
- Real-time monitoring of speeding, illegal parking, and other prohibited behaviors



Major Products



4 Flexible HR Management

Time & Attendance Management

Our solution helps you minimize operational costs while providing a seamless and streamlined process for employee attendance management. You can focus on key business areas and improve overall productivity.

What we offer

Flexible attendance management rules & diverse reports

- Tailored attendance rules
- 23+ types bespoke reports

Openness for customized time & attendance management

- Open integration with third-party systems



Database integration



OpenAPI integration



Major Products



Face Recognition Terminals

Multiple authentication methods:
Face / Fingerprint / Card / Pin Code

5 Safe Production Process

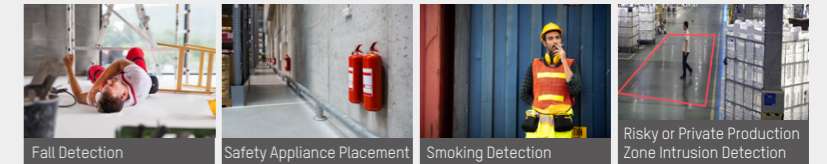
Compliance Checks for PPE (Personal Protective Equipment)

Hikvision's AI-powered PPE detection devices ensure employees are wearing helmets and other PPE, improving safety for personnel, and minimizing risks in work activities.



What we offer

- AI-powered image analytics to identify and address instances of non-compliance with HSE (health, safety, and environment) guidelines
- Real-time safety notification
- Comprehensive display of key safety metrics



Major Products



AIOp DeepinView 7 Series Camera



AIOp DeepinMind NVR



AIOp DeepinMind Server



AI Training Platform

Process Visibility

Our solution enhances process visibility, minimizing manufacturing downtime and improving worker safety and operator performance.

What we offer

- Video monitoring of hard-to-see areas, high-risk or prohibited areas, flammable and explosive materials or environment



Major Products



Thermal Cameras



Explosion-proof Cameras

6 Lean Workshop Production

AR Workshop

The AR solution offers an immersive management experience for operators with high interactivity and excellent visibility.



What we offer

- Intuitive AR live map monitoring production process
- Awareness on production performance
- Quick identification and location of equipment defaults

Major Products



Workshop Inspection

Our work safety patrol mitigates potential risks and enhances workflow efficiency.

What we offer

Remote Inspection On-site Inspection



- Intelligent safety checks of important areas, equipment, and materials
- Digitized inspection process, including planning, execution, data analysis, rectification, and statistics
- Visualized data report for informed decision making

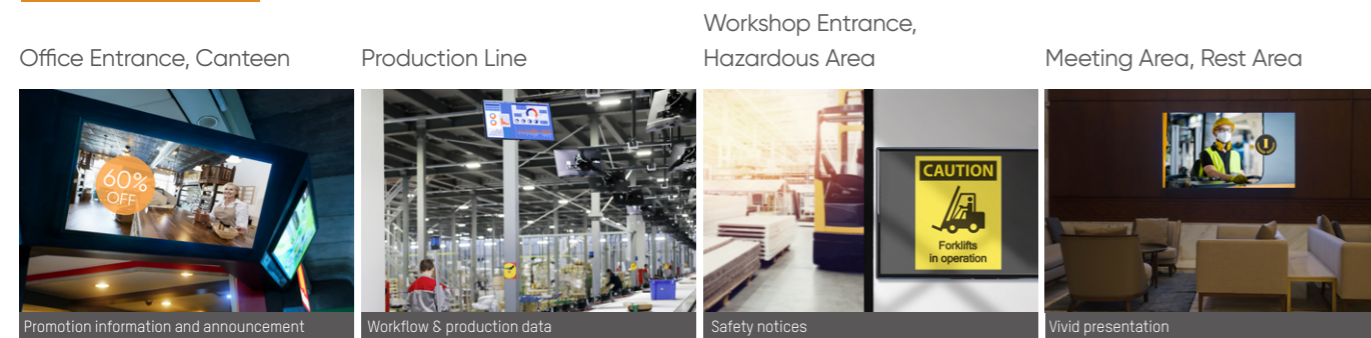
Major Products



Workshop Information Sharing

Displays from Hikvision break down information silos, helping employees communicate without interruptions and collaborate more effectively. It is beneficial to foster a positive working environment that motivates employees and boosts productivity.

What we offer



Major Products



Facility and Equipment Maintenance

Our solution supports end-to-end production process and facility inspections from planning, checking, data analysis, reporting, to troubleshooting. It improves process automation and productivity, minimizing downtime.

What we offer



Major Products



7 Intelligent Logistics Management

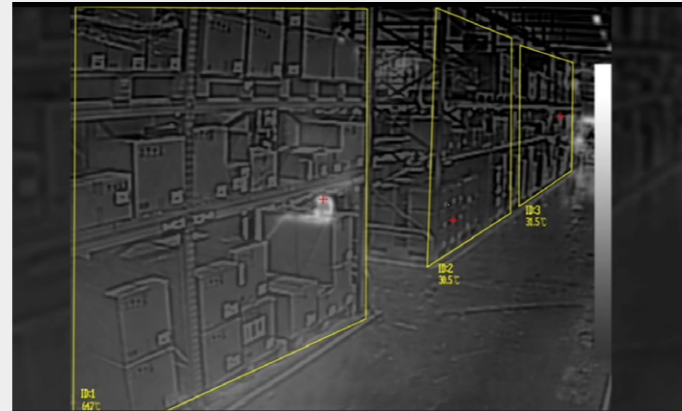
Material Storage Management

Thermal imaging alerts operators to potential fire hazards, allowing for proactive measures to be taken.

What we offer

- Thermography video protection
- Real-time alarm
- Security verification
- Patrol staff dispatch

Major Products

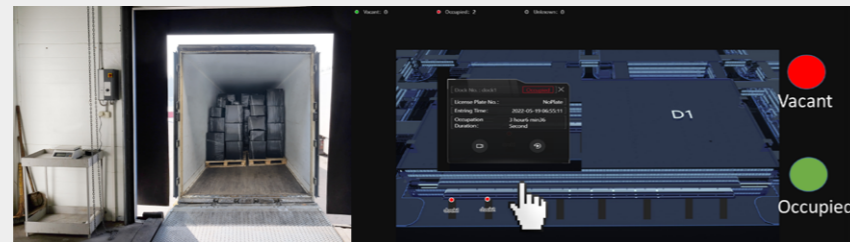


Dock Management

Our AI-powered solution combines intelligent dock cameras, ANPR technology, and more to optimize visibility and safety at docks, enabling operators to improve loading and unloading efficiency.

What we offer

- Warehouse indoor inspections, outdoor dock space detection, and rear door status detection
- Vehicle license plate recognition and loading rate detection
- Automatic LED light control to optimize visibility
- Visualized real-time display of dock status



Major Products



Parcel Tracking

The parcel tracking process is fully automating, providing real-time visibility and transparency, reducing errors and delay.

What we offer

Packaging process monitoring

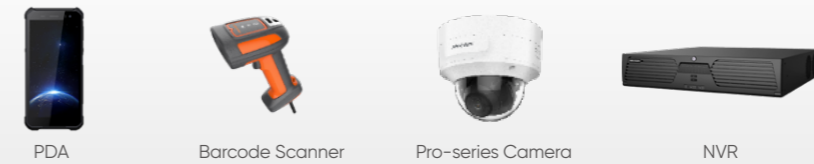
- Panoramic view of packing process with detailed parcel information

Quick parcel checking

- Easy parcel location from barcode scanners and cameras



Major Products



AR Warehouse

The video live interactive map redefines and upgrades warehouse video security, enhancing operational efficiency, accuracy, and overall productivity.

What we offer

Panoramic view + key area monitoring



AR video live interactive map



Major Products



8 Centralized Park Management

All-in-one Command Center

An all-in-one command center enables real-time monitoring, seamless communication, efficient decision-making, and effective resource allocation.

What we offer

Process Monitoring

- Remote video inspections

AR Visualization

- Panoramic and detailed view



Third-party Integration

- Content display from third-party systems

Alarm Handling

- Real-time alarms and alarm verification

Major Products



Video Wall



Keyboard



Decoder

Visualized Security Management

Hikvision offers a complete site management solution that improves overall situational awareness, enhance proactive security measure and data-driven decision-making.

What we offer

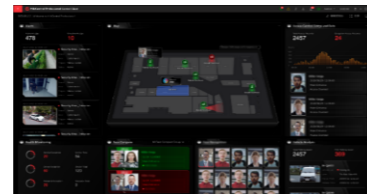
Multiple visualized applications

- E-map
- 3D display
- AR live interaction
- Data dashboard

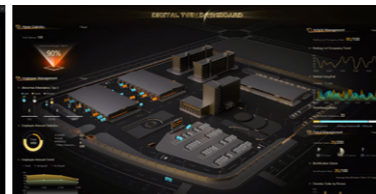
High scalability for different needs

- Sub-system scalability for business growth
- Multi-site scalability for different scenarios

E-map



3D



Data Dashboard



AR



Multi-park Management

Our professional management software streamlines processes and implements standardized procedures, promoting consistency across all parks.

What we offer



HQ:

- Personnel and vehicle authorization
- Key area protection
- Alerts for important events
- Unified system maintenance

Park:

- Whole-site management
- Personnel and vehicle access control
- Adjustment of permissions within the park
- On-site maintenance

Intuitive System Maintenance

The intuitive dashboard equips operations teams with multidimensional analytics to inform and elevate decision-making.

What we offer

- Real-time system status monitoring
- Retention of historical data and records
- Breakdown of the overall system into subsystems
- Secure and organized storage records for audit purposes



Major Products



HikCentral Professional



Switch



Central Storage

Unique Businesses in the Manufacturing Industry



Chemical Industry



Electronic Manufacturing Industry



Vehicle Manufacturing Industry



Food Processing Industry

Chemical Industry

Industrial Thermography

What we offer

Key technologies

- Integrated visibility and infrared imaging with industrial thermography
- Thermal radiation detection and image generation

Application scenarios

Plant Elevated Position



Hazardous Material Storage



Electrical Equipment

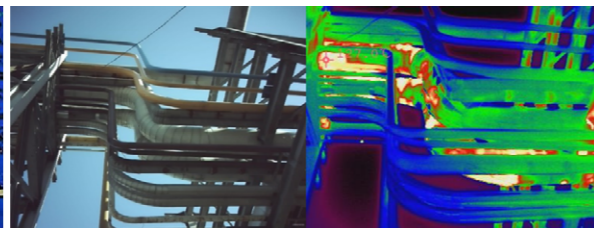


Explosion-proof areas

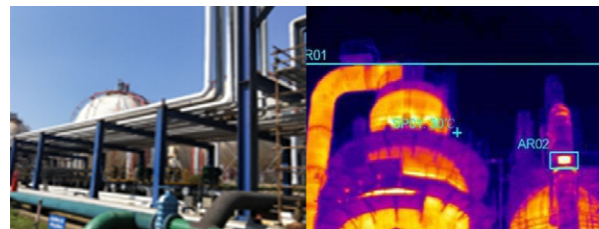
Reactor/Cracker



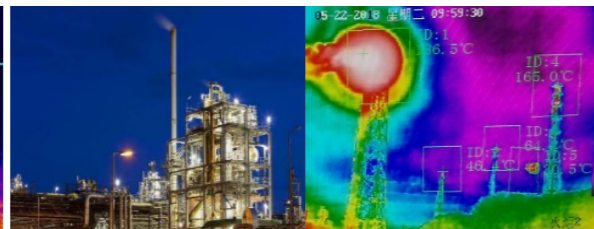
Pipework



Tank Level



Flare Monitoring



Major Products



Thermal Cameras



Explosion-proof Thermography Positioning System



Thermography Cube Cameras



Explosion-proof Thermal Bullet Camera

Electronic Manufacturing Industry

EPA Access Management

What we offer



Belonging Control

- Unauthorized items revealed through security inspection



Flexible Electrostatic Discharge (ESD) Testing Modes

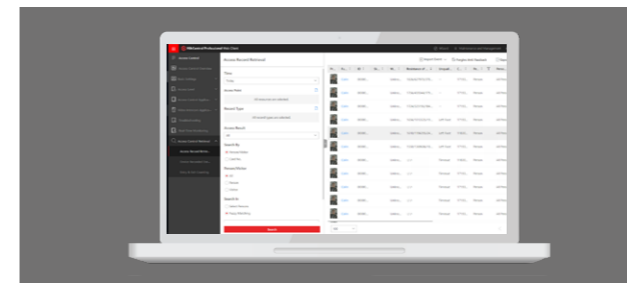
- Enhanced ESD authorization for various EPAs* and roles

* EPA: Electrostatic Discharge Protected Area



Interactive Display

- Visualized testing mode instructions and failed positions



Online Digital Records

- Audit and post-event retrieval
- Time and attendance tracking

Major Products



MinMoe Face Recognition Terminals



ESD Turnstiles



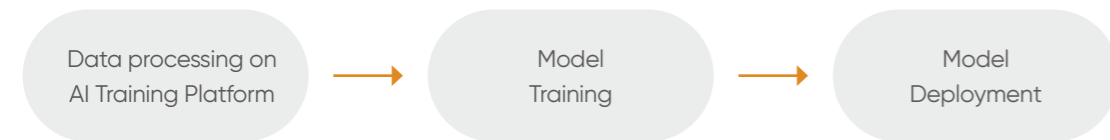
Walk-through Metal Detector

Vehicle Manufacturing Industry

AI-assisted Production Management

What we offer

- Simplified production process with Hikvision AI Training Platform
- AI-Enabled edge devices for intelligent production process management



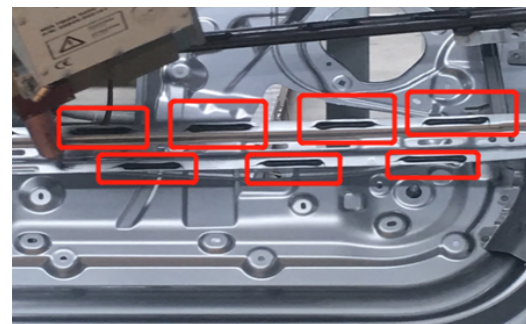
Unauthorized Intrusion



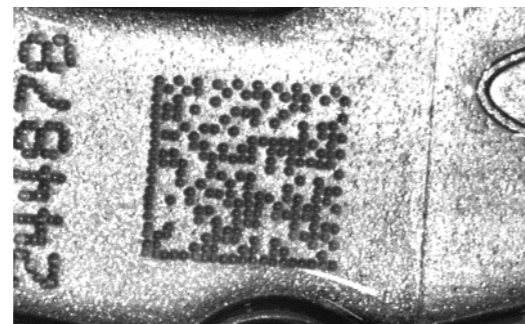
Items Left



Car Door Glue Identification



DPM (Deformable Part Models) Identification



Major Products

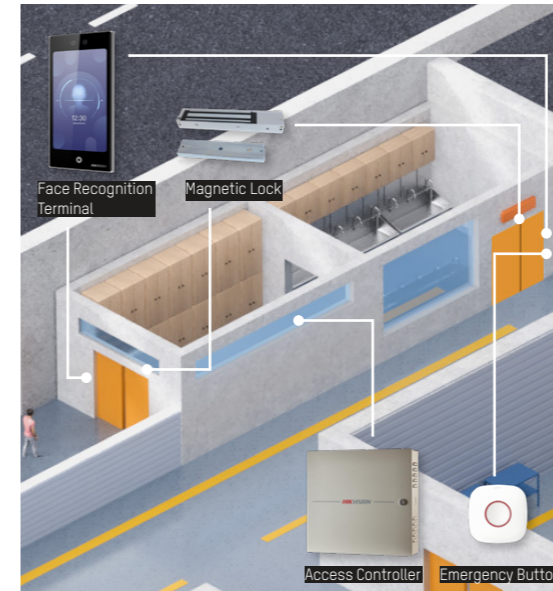
AI Model Network Camera Edge Device

Food Processing Industry

Biological Disinfection

What we offer

Enhanced disinfection measures - rigorous entry control and timely monitoring



- Access to the Disinfection Room is granted through a face recognition terminal
- Both sides of the door are initially locked and unlock after a specified time
- In emergencies, the emergency button unlocks both doors for immediate exit or assistance.

Major Products



Quality Inspection

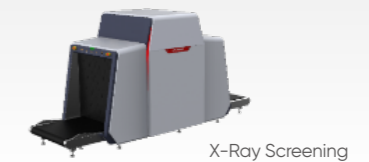
What we offer

- Intelligent product recognition
- Networking management for enhanced efficiency
- Traceable process records

Potato Chip Factory



Major Products



Sugar Factory

