



HIKVISION[®]

2017

iVMS-4200 Part 2A Adding Devices with Wizard

Startup Wizard

- Runs the first time you run iVMS-4200 Client
- Helps with configuration
- Click on “Device and Storage Schedule Configuration” [1]
- Or “Close” Wizard to access Client [2]



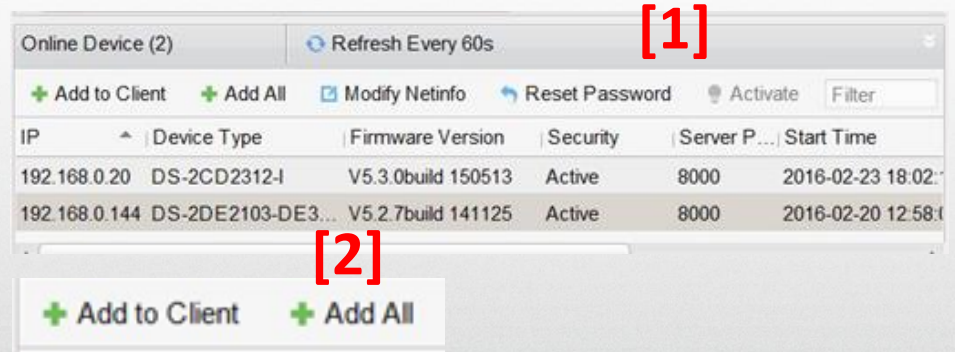
[1]

[2]

HIKVISION

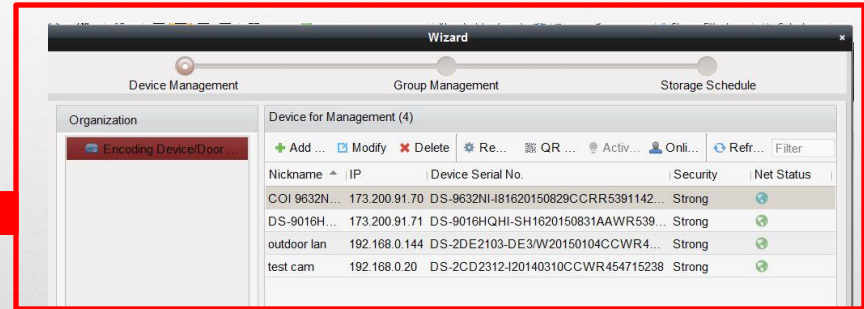
Wizard Device Management

- Auto detects LAN devices [1]
- Choose/add them to system/groups [2]
- Name device, provide ID and password [3]
- Can create/add to group [4]



Wizard Device Management

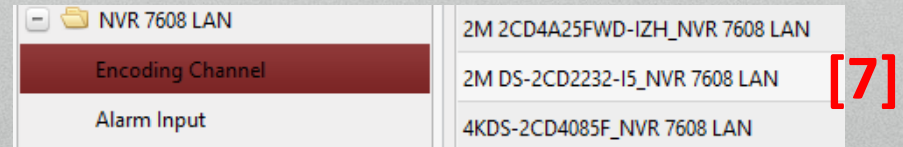
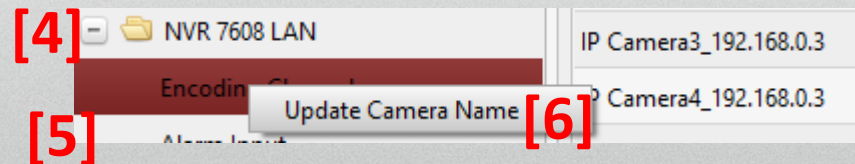
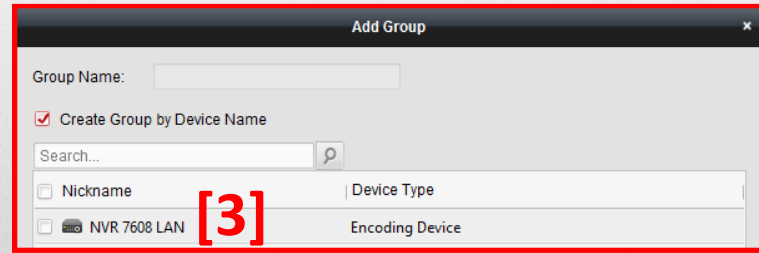
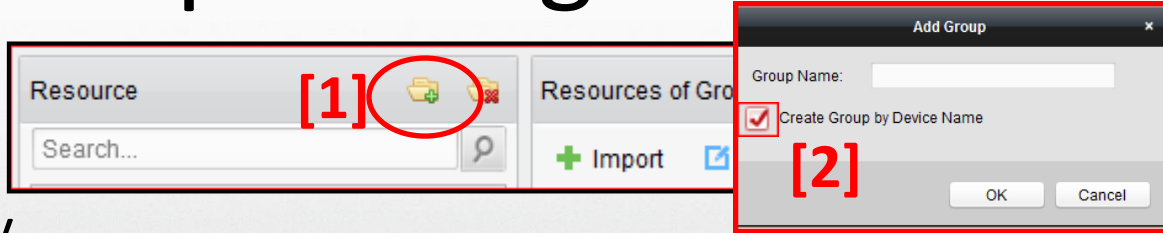
- After add, view device status
- Green means connected [1]



Device for Management (10)										
+ Add Device + Modify - Delete Remote Configuration QR Code Activate Online Users Refresh All Filter										
Nickname	IP	Device Serial No.	Security	Net Status	HDD Status	Recording Status	Signal Status	Hardware Status	Connection	Refresh
12MP DS-2...	192.168.0.97	DS-2CD63C2F-IV20160409CCWR590783080							0	
4k IPC direct	192.168.0.98	DS-2CD4085F20150321CCWR508563968	Strong						2	
COI 4K PTZ	173.200.91.68	DS-2DF8836IV-AEL20151214CCWR561570...	Strong						5	
COI 7716	173.200.91.72	DS-7716NI-I4/16P1620150921CCRR54211...	Strong						13	
COI 9632	173.200.91.70	DS-9632NI-I81620150829CCRR539114220...	Strong						27	
COI DS-901...	173.200.91.71	DS-9016HQHI-SH1620150831AAWR53921...	Strong						18	
DDNS7208		DS-7208HGHI-SH0820151225AAWR56451...							0	
DDNS7608		DS-7608NI-E2/8P0820150108AARR497553...							0	
NVR7608	192.168.0.3	DS-7608NI-E2/8P0820150108AARR497553...	Strong						0	
Turbo7208	192.168.0.4	DS-7208HGHI-SH0820151225AAWR56451...	Strong						0	

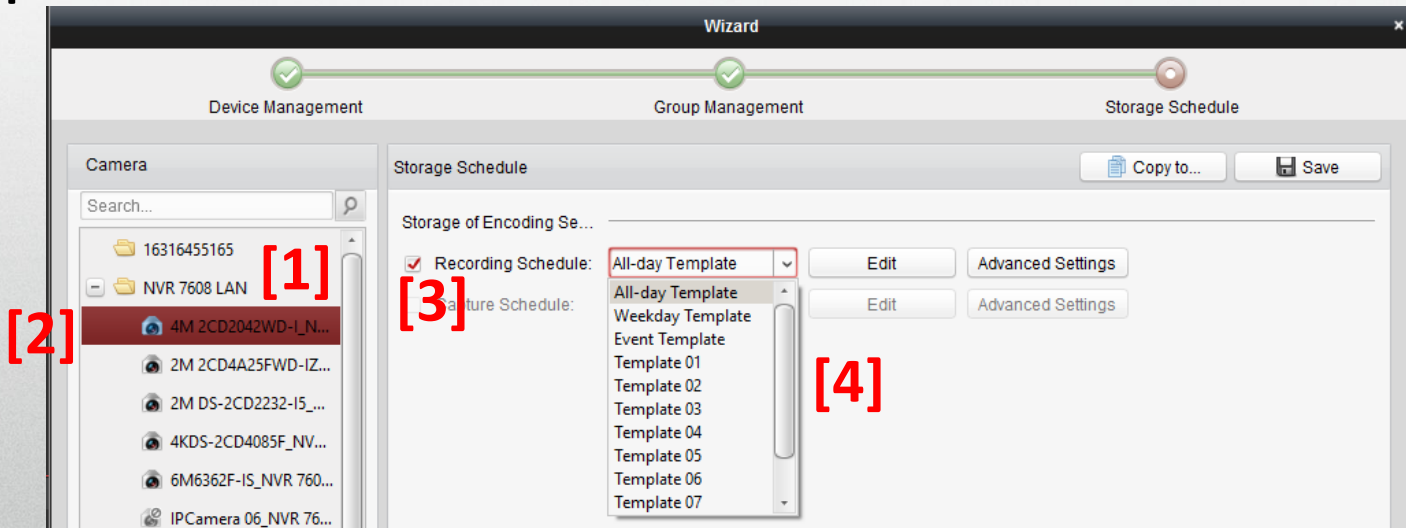
Wizard Group Management

- Click Create Group [1]
- Check 'Create Group by Device Name' [2]
- Choose device to be added [3] then click OK
- Expand Group [4], right click on Encoding Channel [5] and select Update Camera Name [6]
- Camera names are copied from device [7]



Storage Scheduler

- Expand recorder [1] and choose camera [2]



- Check Recording Schedule [3] and select appropriate schedule from drop down [4]

Activation

- Can activate devices
- Choose device [1]
- Click “Activate” [2]
- Enter and confirm device password [3]
- Click OK [4] Device is activated

IP	Device Type	Firmware Version	Security	Server Port	Start Time	Added
192.168.0.3	DS-7608NI-E2/8P	V3.4.21build 160630	Active	8000	2016-07-27 12:32:56	Yes
192.168.0.4	DS-7208HGHI-SH	V3.1.10build 151211	Inactive	8000	2016-08-19 11:14:58	No
192.168.0.98	DS-2CD4085F	V5.3.4build 150812	Active	8000	2016-08-18 14:53:53	Yes

Activation

User Name: admin

Password: [dots]

Strong

Valid password range [8-16]. You can use a combination of numbers, lowercase, uppercase and special character for your password with at least two kinds of them contained.

Confirm Password: [dots]

[4] OK Cancel