

Title:	How to use Milestone Software with <i>HIKvision</i> Devices				
Date:	9/13/2011	Version:	1.0	Pages	5
Product:	HIKvision IP Products				
Action Required:	Information Only				

### 1. Supported Hikvision Devices

Supported Product	Product Model	Firmware Version	Remark
Network Camera	<ul style="list-style-type: none"> <li>DS-2CD852MF-E/DS-2CD862MF-E/</li> <li>DS-2CD752MF-E/DS-2CD752MF-FB/DS-2CD752MF-FBH/DS-2CD752MF-IFB/DS-2CD752MF-IFBH/DS-2CD762MF-FB/DS-2CD762MF-FBH/DS-2CD762MF-IFB/DS-2CD762MF-IFBH/</li> </ul>	BUILD 110426,	Driver Video:0519 is used
	<ul style="list-style-type: none"> <li>DS-2CD7133-E/DS-2CD7153-E/DS-2CD8133F-E/DS-2CD8153F-E/</li> </ul>	BUILD 110516	Driver Hikvision71x3 is used
	<ul style="list-style-type: none"> <li>DS-2CD833F-E/DS-2CD893PF-E/DS-2CD893NF-E/DS-2CD893PFWD-E/DS-2CD893NFWD-E/DS-2CD863PF-E/DS-2CD863NF-E/DS-2CD864FWD-E/DS-2CD853F-E/DS-2CD854F-E/DS-2CD883F-E/</li> <li>DS-2CD733F-E/DS-2CD733F-EI/DS-2CD793PF-E/DS-2CD793PF-EI/DS-2CD793NF-E/DS-2CD793NF-EI/DS-2CD793PFWD-E/DS-2CD793PFWD-EI/DS-2CD793NFWD-E/DS-2CD793NFWD-EI/DS-2CD763PF-E/DS-2CD763PF-EI/DS-2CD763NF-E/DS-2CD763NF-EI/DS-2CD753F-E/DS-2CD753F-EI/DS-2CD754F-E/DS-2CD754F-EI/DS-2CD754FWD-E/DS-2CD754FWD-EI/DS-2CD783F-E/</li> <li>DS-2CD8253F-EI/DS-2CD8253F-E/DS-2CD8254F-EI/DS-2CD8254F-E/</li> </ul>	BUILD 110516	Driver Hikvision8x3 is used  DS-2CD853F-E is verified officially by Milestone.
Network Speed Dome	<ul style="list-style-type: none"> <li>DS-2DF1-602H/DS-2DF1-612H/DS-2DF1-632H/DS-2DM1-602H/DS-2DM1-612H/DS-2DM1-632H/</li> <li>DS-2DF1-603H-B/DS-2DF1-613H-B/DS-2DF1-633H-B/DS-2DM1-603H-B/DS-2DM1-613H-B/DS-2DM1-633H-B/</li> <li>DS-2DF1-604H/DS-2DF1-614H/DS-2DF1-634H/DS-2DM1-604H/DS-2DM1-614H/DS-2DM1-634H/</li> <li>DS-2DF1-605H-B/DS-2DF1-615H-B/DS-2DF1-635H-B/DS-2DM1-605H-B/DS-2DM1-615H-B/DS-2DM1-635H-B</li> <li>DS-2DF1-606H/DS-2DF1-616H/DS-2DF1-636H/DS-2DM1-606H/DS-2DM1-616H/DS-2DM1-636H/</li> <li>DS-2DF1-607H-B/DS-2DF1-617H-B/DS-2DF1-637H-B/DS-2DM1-607H-B/DS-2DM1-617H-B/DS-2DM1-637H-B/</li> <li>DS-2DF1-608H/DS-2DF1-618H/DS-2DF1-638H/DS-2DM1-608H/DS-2DM1-618H/DS-2DM1-638H/</li> </ul>	BUILD 110811	Driver Video0522 is used
DVR/NVR	N/A		
Video Server	<ul style="list-style-type: none"> <li>DS-6101HFI-IP/ DS-6104HCI/</li> </ul>	BUILD 100908	Driver Video0273 and Video0277 are used
Compression Card	N/A		

Title:	How to use Milestone Software with <i>HIKvision</i> Devices				
Date:	9/13/2011	Version:	1.0	Pages	5
Product:	HIKvision IP Products				
Action Required:	Information Only				

## 2. Milestone Software Versions

Xprotect Enterprise system v6.5, v7.0 and v8.0 with device pack v4.8 and above, and corresponding Go, Basic and Professional version are supported. XProtect Corporate system v4.0 and above is supported as well.

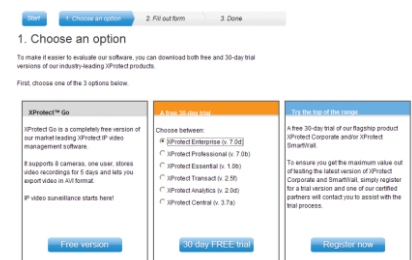
The latest version is recommended. Xprotect Enterprise system v7.0a with device pack v5.3 are used in this document.

Note: Early versions may not support H.264 stream, and only support some of the Hikvision devices in the list.

## 3. How to Build a Simple Demo

1. Download Milestone software from Milestone's website. For example:

<http://www.milestonesys.com/downloads/free>



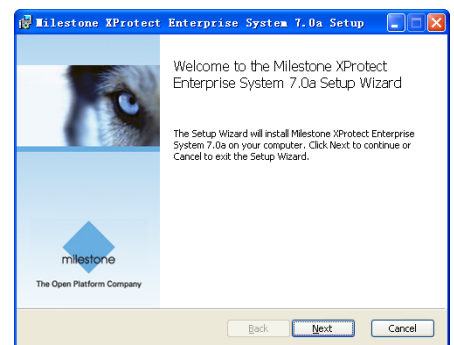
2. Download device pack from Milestone's website.

<http://www.milestonesys.com/downloads/>

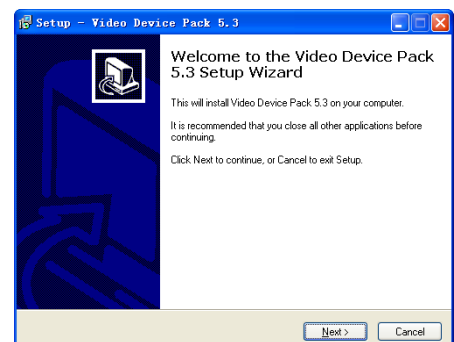
### Milestone Download Center

Product	Version	Size	Download EMEA / US
XProtect Enterprise XProtect Device Pack	5.3	48.1 MB	
XProtect Corporate XProtect Device Pack	5.3	48.1 MB	
Server-Side XProtect Device Pack	5.3	48.3 MB	
XProtect Professional XProtect Device Pack	5.3	48.1 MB	
XProtect Basis Plus XProtect Device Pack	5.3	48.1 MB	
XProtect Basis			

3. Double click "MilestoneXProtectEnterpriseSystem\_en-US.msi" to install XProtect Enterprise System. Please choose "30 days trail" if you do not have a license for the software.

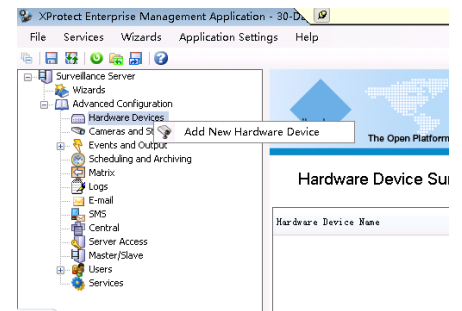


4. Double click "DeviceInstaller" to install the device pack. Please make sure the device pack is in the same directory of XProtectEnterpriseSystem.

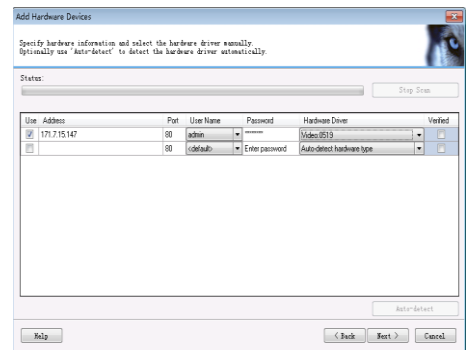


Title:	How to use Milestone Software with <i>HIKvision</i> Devices				
Date:	9/13/2011	Version:	1.0	Pages	5
Product:	HIKvision IP Products				
Action Required:	Information Only				

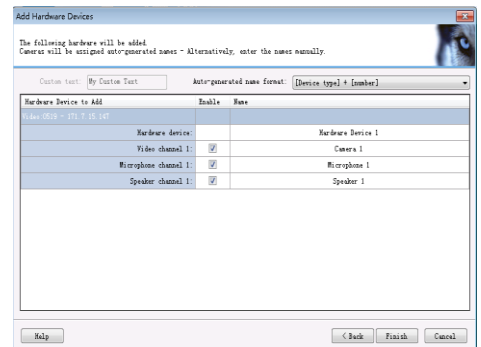
- After installation, please run “Management Application”, right click on “Hardware Devices”, and click on “Add New Hardware Device”.



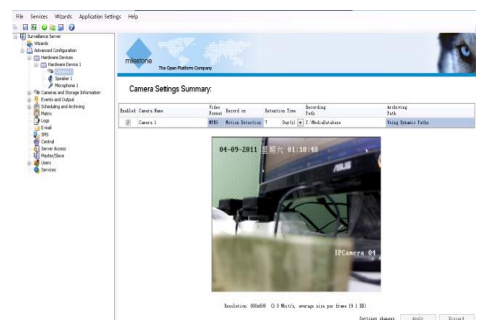
- Choose “Add Hardware Devices Manually”, and fill in the IP address, user name, and password of Hikvision devices. Select a “Hardware driver” according to your specific Hikvision device.



- Once the Hikvision device is recognized, the video channel, speaker, microphone, alarm input and output will be recognized. Click “Finish” to add the device.

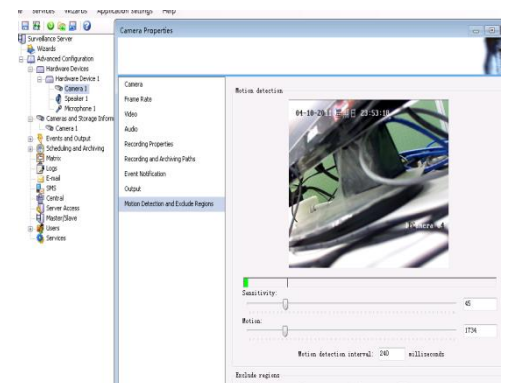


- Click on a hardware device icon, to check whether the video is displayed correctly.

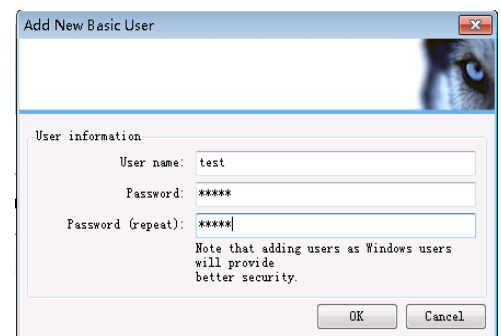


Title:	How to use Milestone Software with <i>HIKvision</i> Devices				
Date:	9/13/2011	Version:	1.0	Pages	5
Product:	HIKvision IP Products				
Action Required:	Information Only				

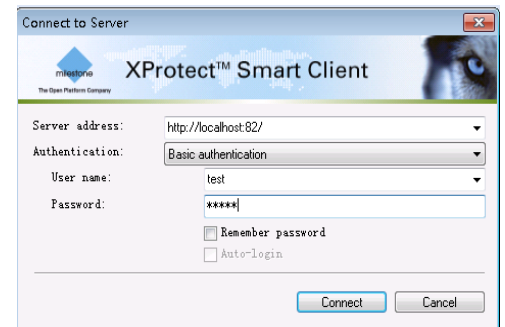
9. Double click a camera icon; setup the resolution, frame rate, motion detection parameters, etc.



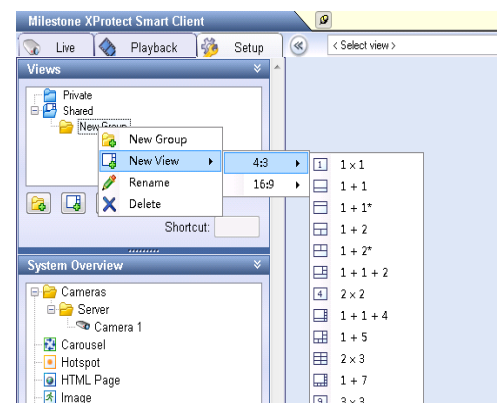
10. Right click on “Users”, select “Add New Basic User”. Give the new basic user a name and a password. Go to “Server Access” to change the “Local port” to other values if port 80 is already in use by another application.



11. Run “XProtect Smart Client”, select “Basic authentication” and use the basic user account to login. If “XProtect Smart Client” and “Management Application” are running on the same PC, “Server address” could be “http://localhost”; if local port has been modified, server address should be followed by the new local port.

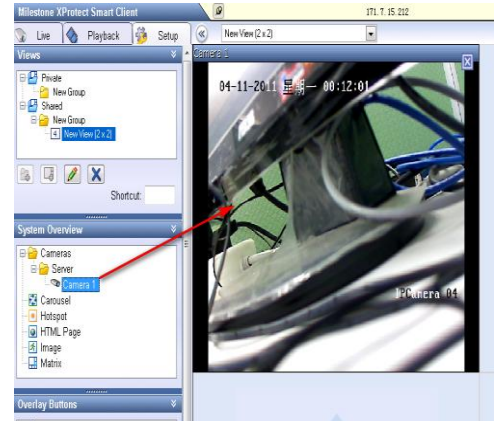


12. Once logged in, go to “Setup”, right click on a group folder, and create a new view.

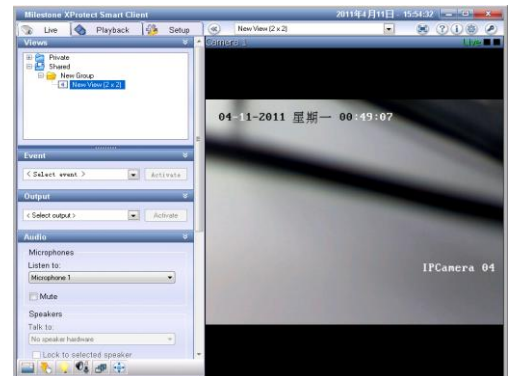


Title:	How to use Milestone Software with <i>HIKvision</i> Devices				
Date:	9/13/2011	Version:	1.0	Pages	5
Product:	HIKvision IP Products				
Action Required:	Information Only				

13. Go to “System Overview”, “Server”, click on a camera, drag it to a Window of the view and drop it. If connection is good, “Smart Client” will display a snapshot from the camera on the window.



14. Go to “Live”, and “Smart Client” will show the video according to the setup.



## 4. Known Issues

1. Only 6 inch speed dome with 2 alarm inputs and 2 alarm outputs, 6101 DVS with 1 alarm input and 1 alarm output will be recognized.