

NEW ADVANCED SERIES

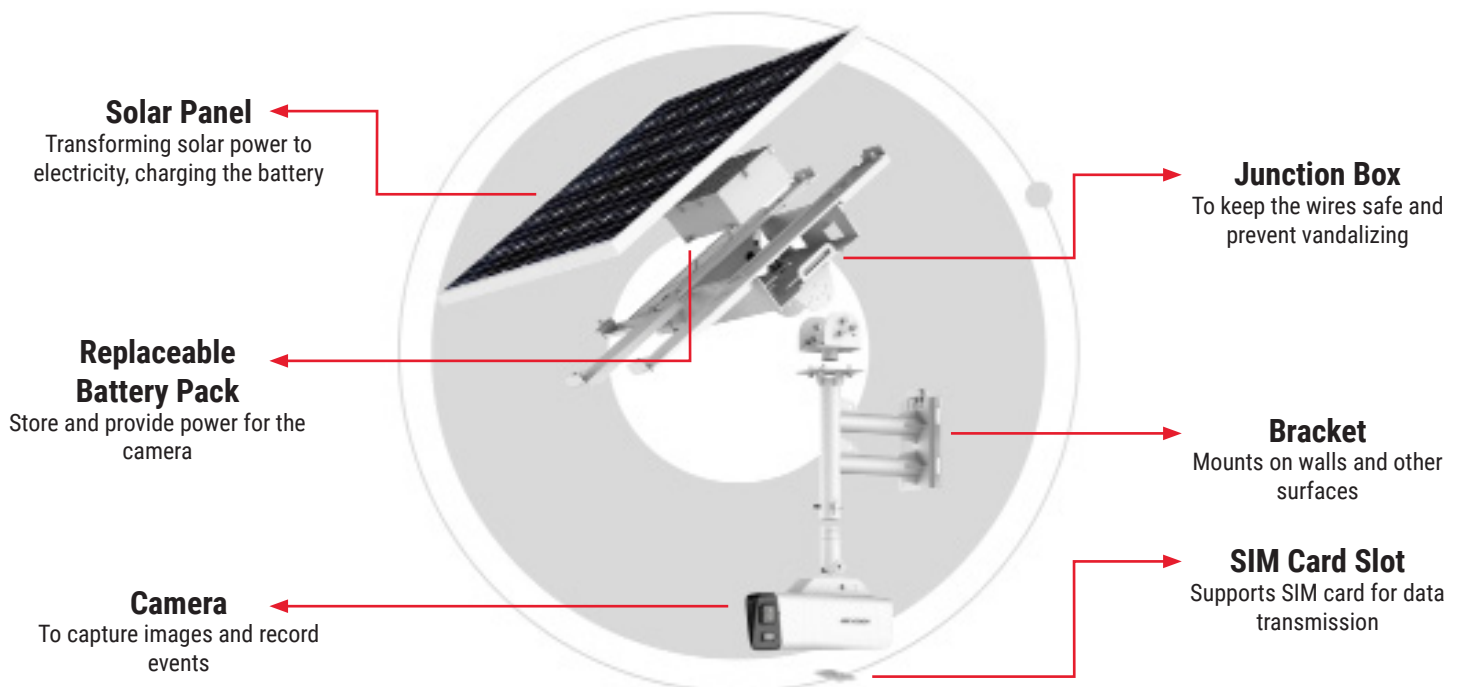
SOLAR-POWERED SECURITY SYSTEM

Sustainable & Flexible Security with Rapid Deployment Keeps Your Remote Area Safe



Introducing the new 8 MP model DS-2XS6A87G1-L/C32S80 with an 80-watt solar panel and a 320 WH replaceable battery pack for larger projects.

Often, end users or system integrators have to purchase and assemble various parts by themselves to build a standalone security system for applications where electricity and internet are unavailable. This process requires a significant amount of design work and time to locate the proper parts needed, resulting in excess costs, higher power consumption, low stability, and difficulty using the system. However, Hikvision's solar security solution can now be deployed by one person providing great cost-efficiency, stability, and ease of use.



The complete solar camera kit includes a Hikvision 4K security camera, solar panel, replaceable battery pack (battery packs purchased separately), and a bracket for mounting.

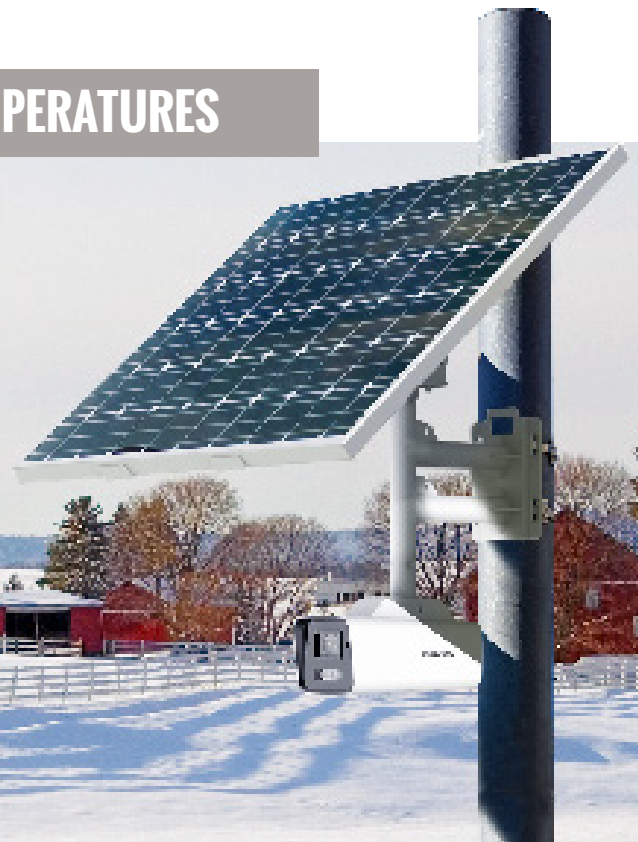
NO ELECTRICAL WIRING OR NETWORK CABLES REQUIRED



Powered by solar energy, this kit system can be fully deployed without any electrical wiring or network cables. The replaceable battery supports smart power management and long-term power storage. Users can enjoy up to 7 days of continuous operations in the absence of direct sunlight. The camera systems can connect easily and wirelessly to the internet over mobile networks.

BATTERY PERFORMS IN EXTREMELY LOW TEMPERATURES

Ordinary batteries often lose power or become completely inoperable in the winter, especially in higher altitudes. Hikvision's solar-powered camera system comes with a built-in heater so the battery can operate in temperatures as low as -20° Celsius (-4° F)



ColorVu TECHNOLOGY FOR 24/7 FULL COLOR

Hikvision's ColorVu technology's powerful ability to capture details in low lighting comes from two specific breakthroughs in hardware: advanced lenses and high-performance sensors. Cameras with ColorVu technology guarantee videos with colorful, detailed images when you need them.



Traditional IR Camera



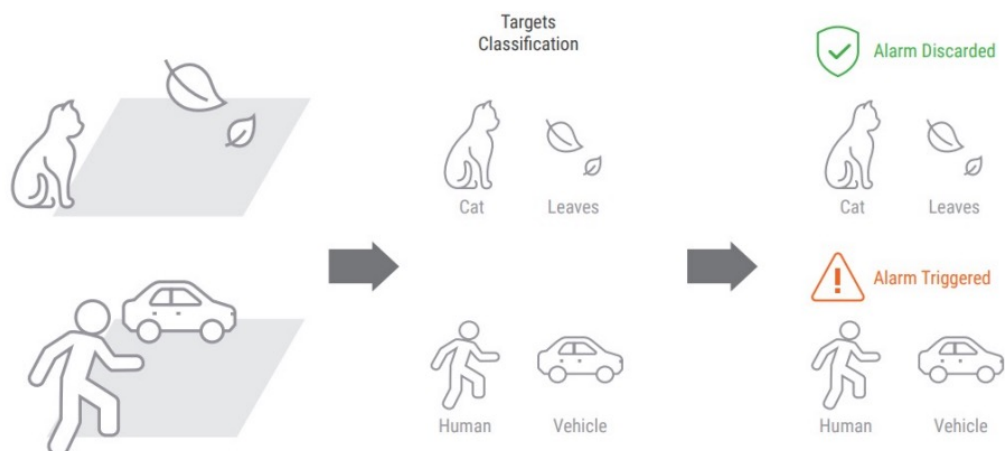
ColorVu Camera

2ND GEN AcuSense TECHNOLOGY FOR SMART PERIMETER PROTECTION

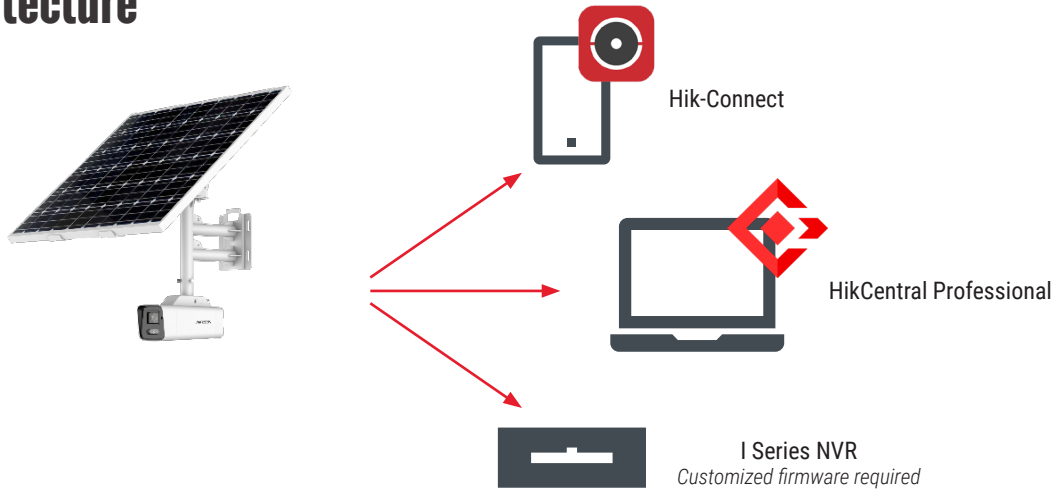
The most common concerns in perimeter protection are trespassing and vehicle break-ins. AcuSense 2.0 helps you to focus on these events in two ways:

- Alarms only trigger when the preset intrusion type takes place
- Related videos are sorted by category for an easier search

2nd Gen AcuSense uses a built-in algorithm to support multiple Video Content Analytics (VCAs) for human and vehicle classification to distinguish between humans, vehicles, and other objects. This reduces false alarms up to 90%, saving you time and effort by delivering more accurate alarm notifications on focused events.



System Architecture



PRODUCT SHOWCASE

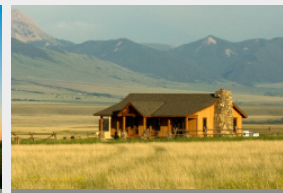
DS-2XS6A87G1-L/C32S80 (4mm)

**Battery for purchase separately*

- 8 MP camera with AcuSense & ColorVu
- 80-Watt solar panel
- 30 Ah chargeable lithium battery
- -4° Fahrenheit (-20°C) to 140° F (55°C) working temperature
- Camera is water and dust resistant (IP67)
- Beaufort scale up to 12
- **Please note, the battery pack DS-2FSCH30 must be ordered separately**



APPLICATIONS



FOCUSED ON YOUR SUCCESS

HIKVISION

©2022 Hikvision USA Inc. and Hikvision Canada Inc. All rights reserved. Hikvision is a registered trademark of Hikvision Digital Technology Co., Ltd. in the US, Canada and other countries. Product specifications and availability are subject to change without notice.