

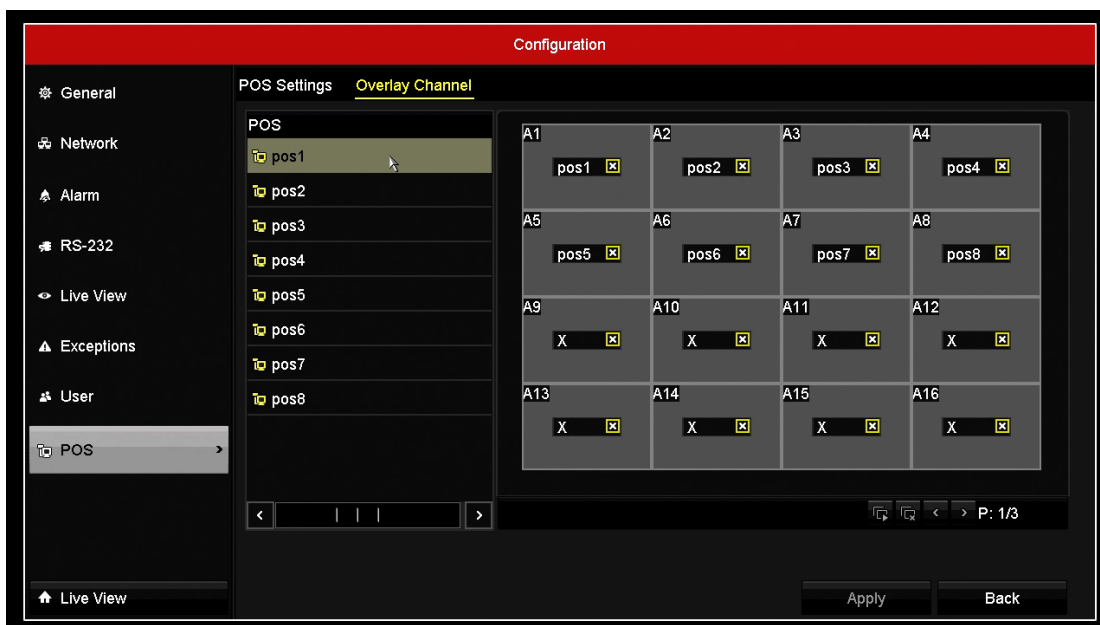
How to use POS function in DVR using TCP or UDP

Preparation

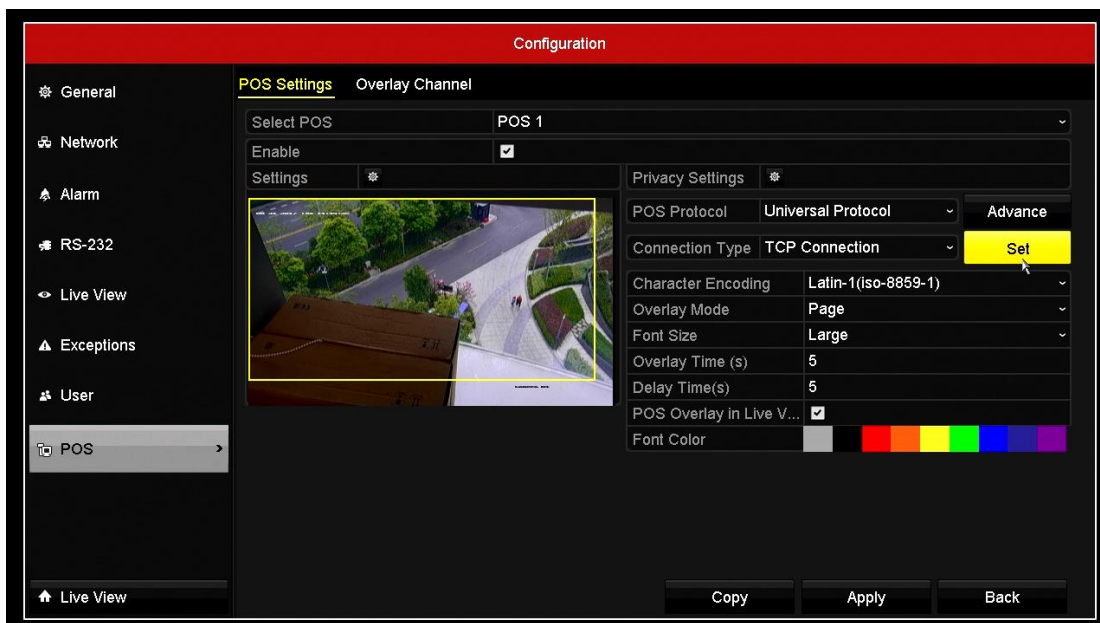
To use POS function, both DVR and POS server should be configured and you can configure DVR locally or via iVMS-4200.

Steps:

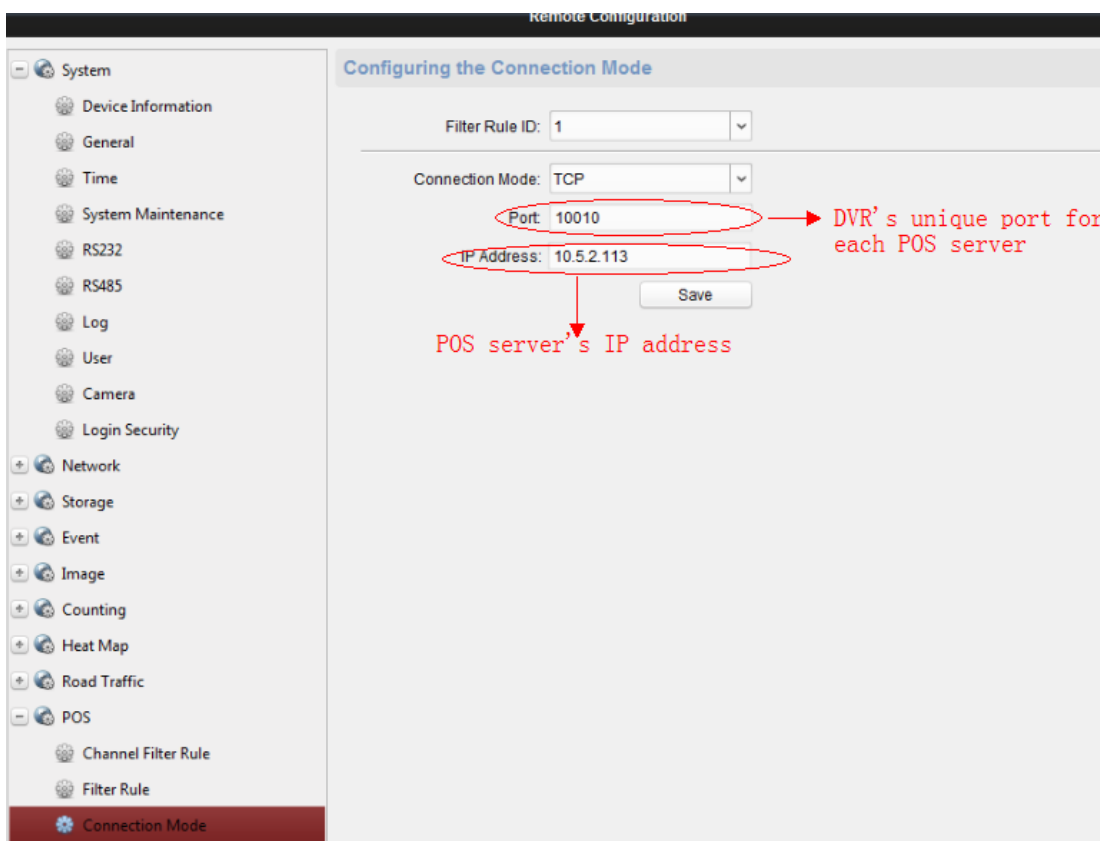
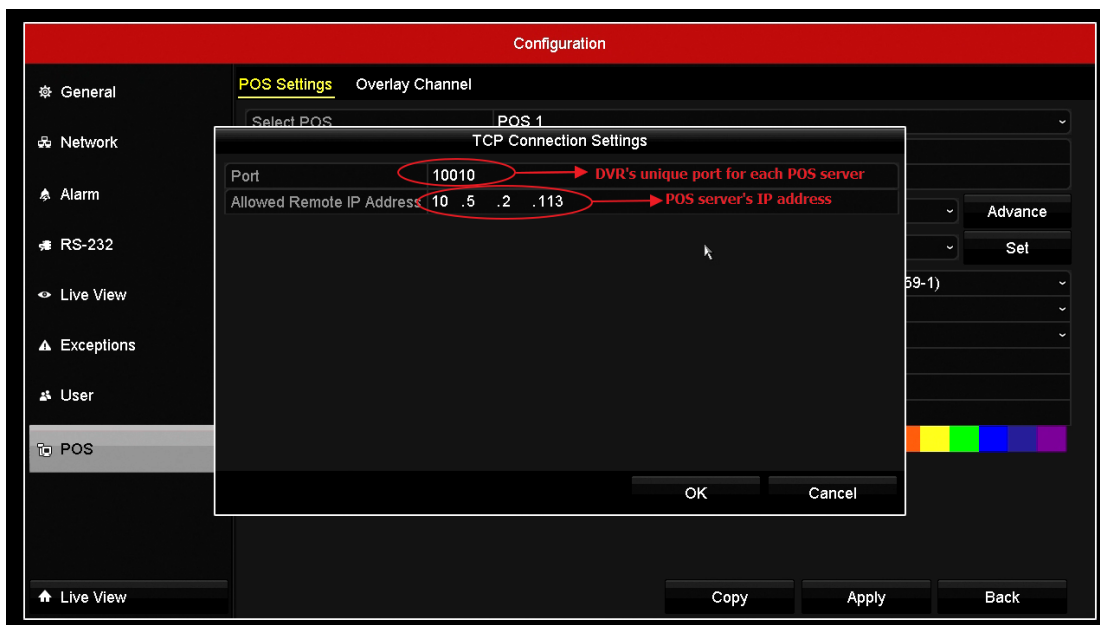
1. Select which channel to overlay POS info.



2. Set port number and IP address of POS server.



3. Input a unique port number for each POS channel and the IP address of the corresponding POS server.



4. In POS server, input the IP address of DVR and the port number that you set in the previous step.

First Choice for Security Professionals

HIKVISION Technical Support