

Title:	DS-PEA How to configure in HikCentral	Version:	v1.0	Date:	14/02/2019
Product:	DS-PEA Series Emergency Alarm Device			Page:	1 of 10

Preparation

1. DS-PEA1-21 Panic Alarm Station
2. HikCentral V1.3.0

DS-PEA How to configure in HikCentral

When you want pop-up windows in HikCentral Client, you need configure something by HikCentral website and Client..

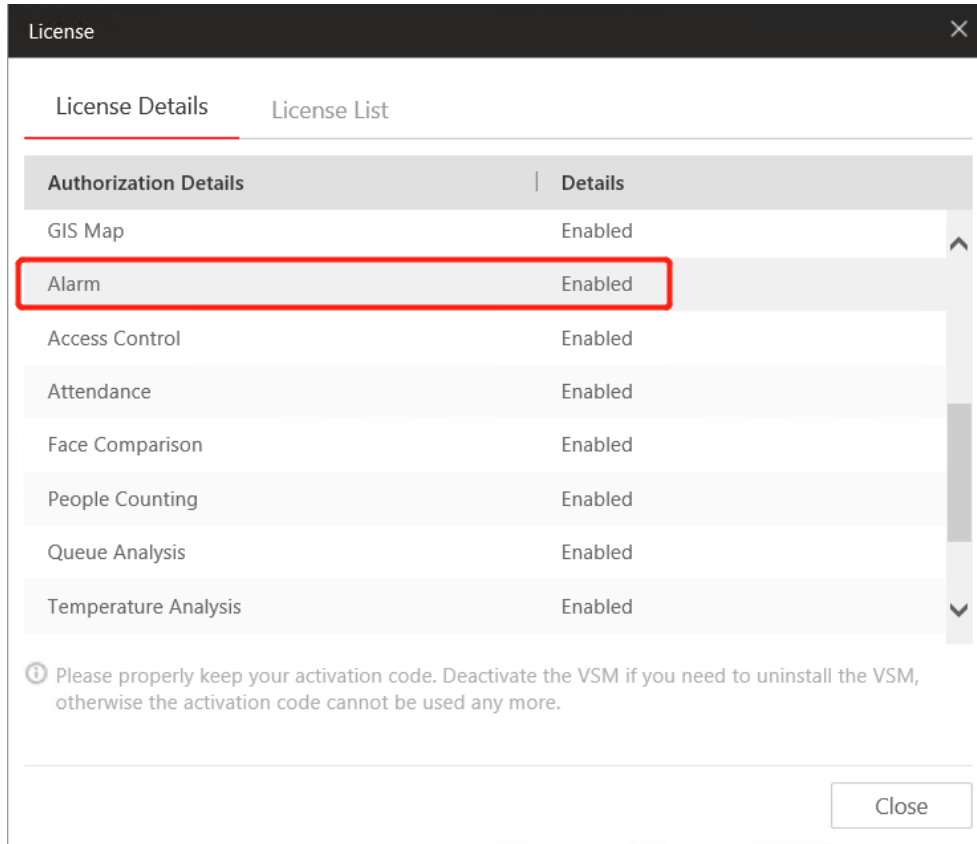
1. Check the **license** for **Alarm input number** and **Alarm module**.

Authorization Details	Details
Camera(Exclude Cameras Imported from Site)	1/100
Access Point	0/50
Alarm Input (Security Control Device)	3/2048
Recording Server	1/64
Remote Site ⓘ	0/5
UVSS	0/4
ANPR	Enabled
Smart Wall	Enabled

ⓘ Please properly keep your activation code. Deactivate the VSM if you need to uninstall the VSM, otherwise the activation code cannot be used any more.

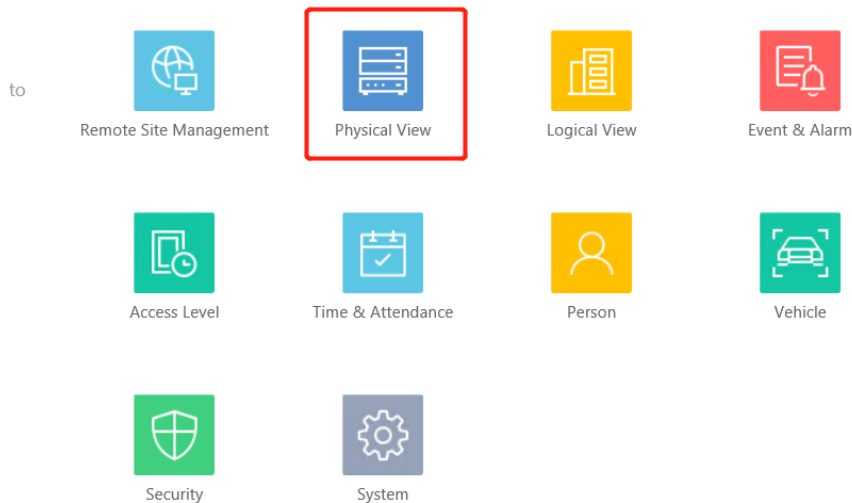
Close

Title:	DS-PEA How to configure in HikCentral	Version:	v1.0	Date:	14/02/2019
Product:	DS-PEA Series Emergency Alarm Device			Page:	2 of 10



2. Add DS-PEA1-21 Panic Alarm Station to HikCentral.

1. Choose Physical View



Title:	DS-PEA How to configure in HikCentral	Version:	v1.0	Date:	14/02/2019
Product:	DS-PEA Series Emergency Alarm Device			Page:	3 of 10

2. Choose Security Control Device, add device IP to HikCentral

HikCentral Web Client

Encoding Device
Access Control Device
Security Control Device
Recording Server
Streaming Server
Smart Wall

Add Security Control Device

Port Segment
 Batch Import

Basic Information

* Device Address: 10.9.96.174 ✓ 1
* Device Port: 8000
* Alias: 10.9.96.174 ✓ 2
* User Name: admin
* Password: ✓ 3
Weak

Channel Information

Add Channel to Area

* Channel: All Channels
 Specified Alarm Input

* Area: Create Area by Device Name
 Existing Area

Add **Add and Continue** Cancel

3. Configure Map.

1. Choose Logical View.
2. Choose Alarm Inputs.
3. Click Alarm in 3, and add the Alarm in point to map.

Title:	DS-PEA How to configure in HikCentral	Version:	v1.0	Date:	14/02/2019
Product:	DS-PEA Series Emergency Alarm Device			Page:	4 of 10

Cameras Access Points **Alarm Inputs** Alarm Outputs UVSSs

+ Add Delete Search

<input type="checkbox"/>	Name	Device	Area	Added to...
<input type="checkbox"/>	Alarmin 1_10.9.96.174	10.9.96.174	10.9.96.174	No
<input type="checkbox"/>	Alarmin 2_10.9.96.174	10.9.96.174	10.9.96.174	No
<input type="checkbox"/>	Alarmin 3_10.9.96.174	10.9.96.174	10.9.96.174	Yes

Total 3 Record(s) 100 /1 Go

无标题 TEST

Set GIS Relate Map

← Alarmin 3_10.9.96.174

Event Settings

No available event information found for the resource.

Configuration

Map Settings

Add to Map

Icon Style Add New

Name Color

Remark

Save Cancel

TEST

无标题

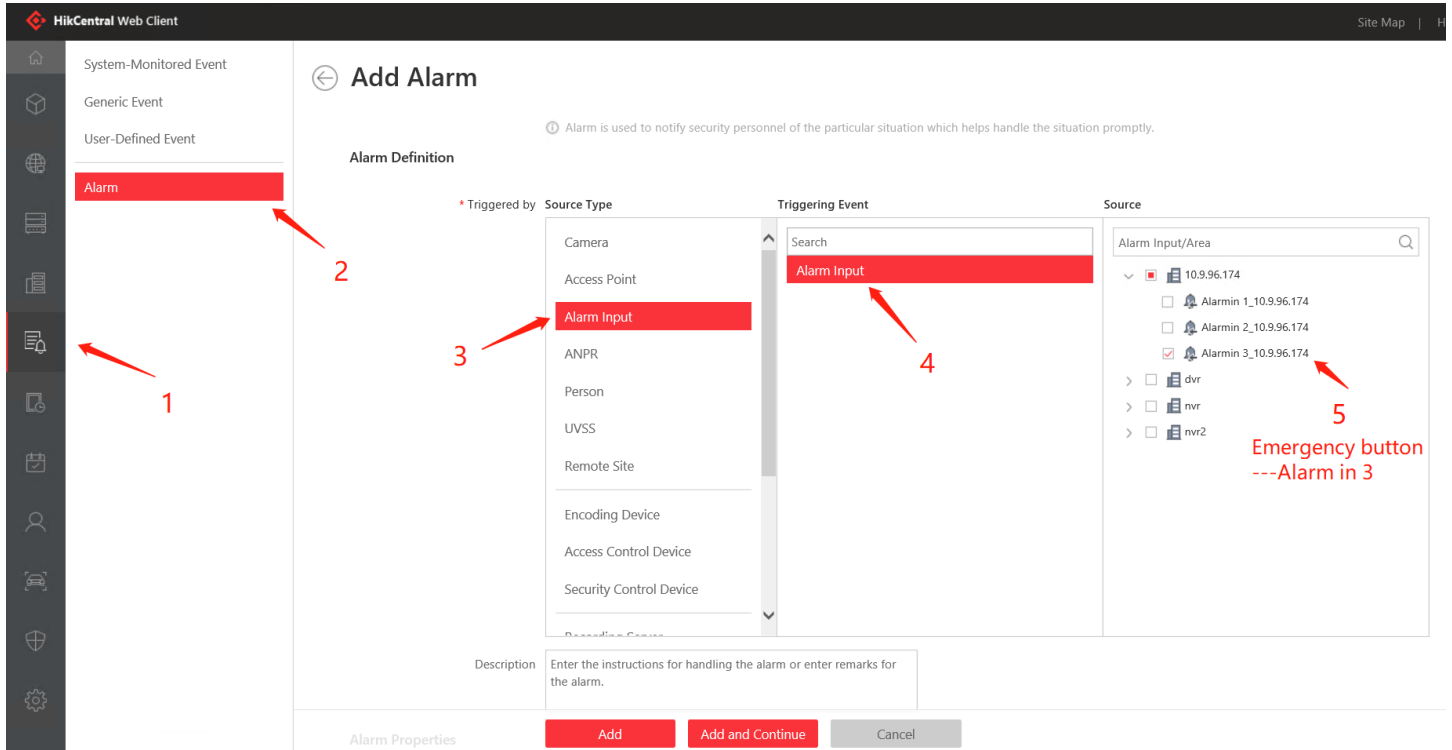
TEST

Alarmin 3_10.9.96.174

Title:	DS-PEA How to configure in HikCentral	Version:	v1.0	Date:	14/02/2019
Product:	DS-PEA Series Emergency Alarm Device			Page:	5 of 10

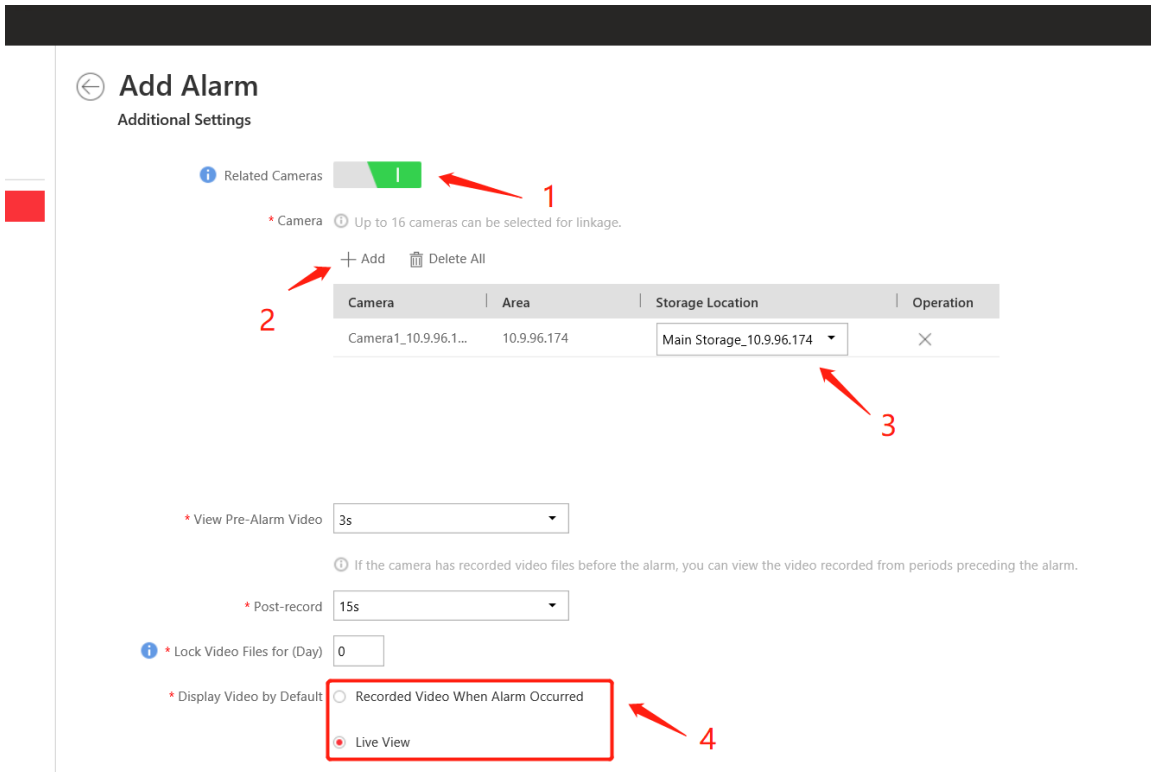
4. Configure Event and Alarm (Pop-Up) .

1. Choose Event & Alarm.
2. Choose Alarm.
3. Choose **Alarm Input**----**Alarm Input**----**Device**----**Alarm in 3**.

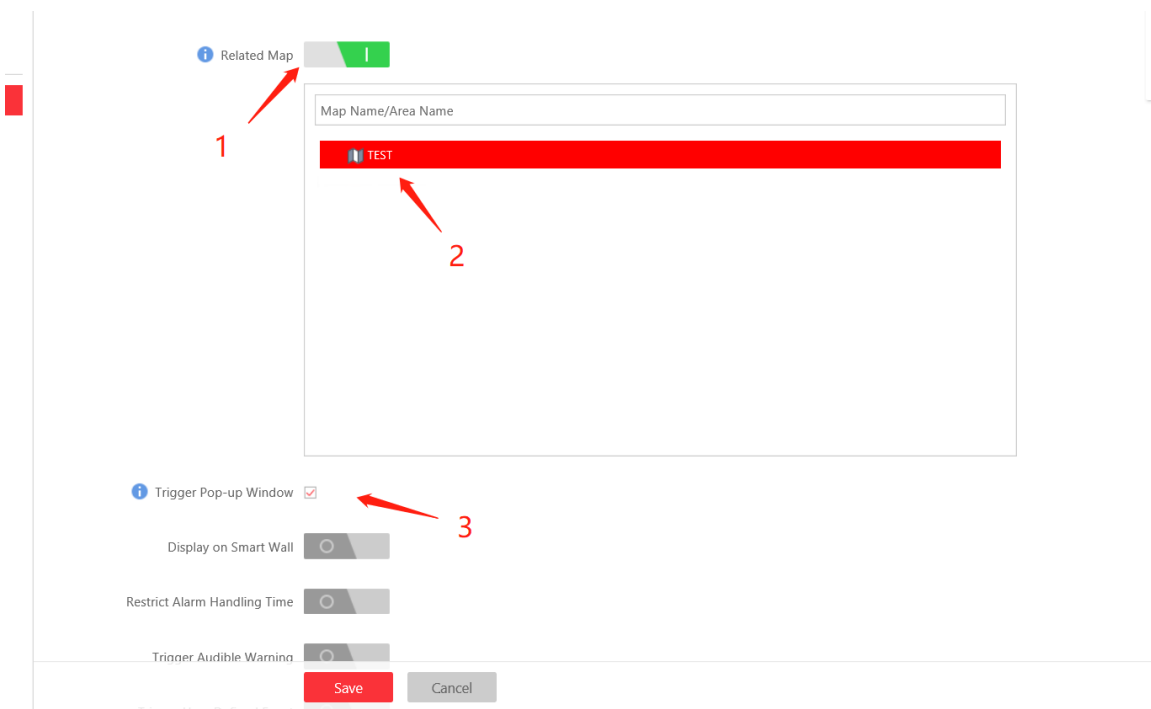


4. Choose **Related Cameras**----- **Device Camera**----**Configure Storage Location**
5. For Display Video type you can choose **Recorded Video** or **Live View**.

Title:	DS-PEA How to configure in HikCentral	Version:	v1.0	Date:	14/02/2019
Product:	DS-PEA Series Emergency Alarm Device			Page:	6 of 10



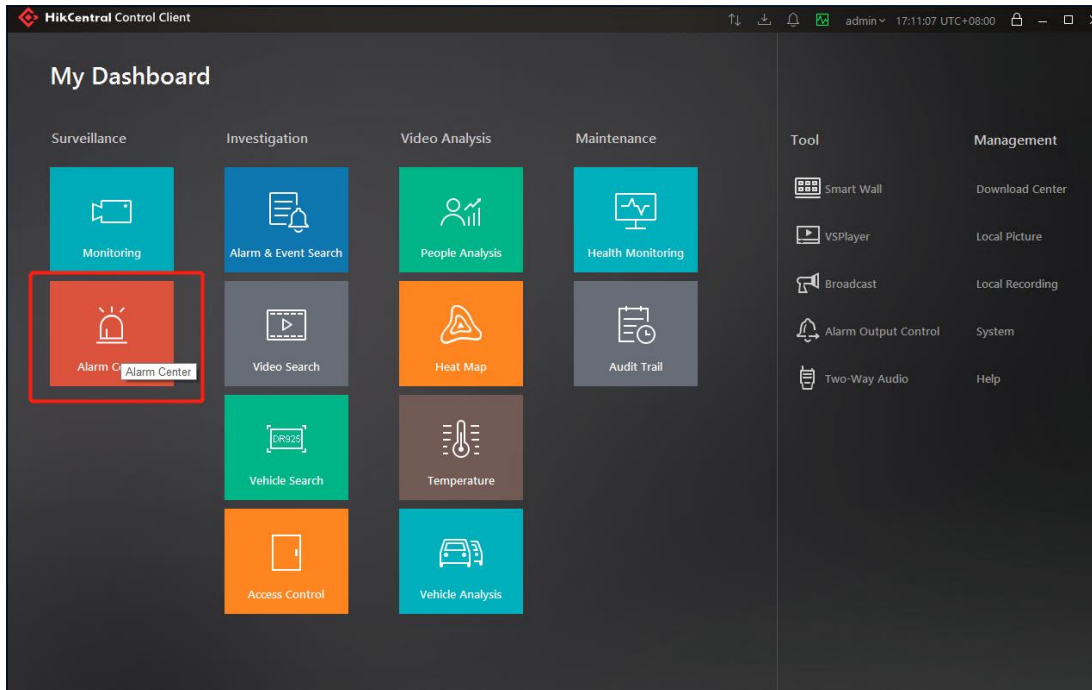
- 6. Click **Related Map**-----choose Map.
- 7. Click **Trigger Pop-up Window**.



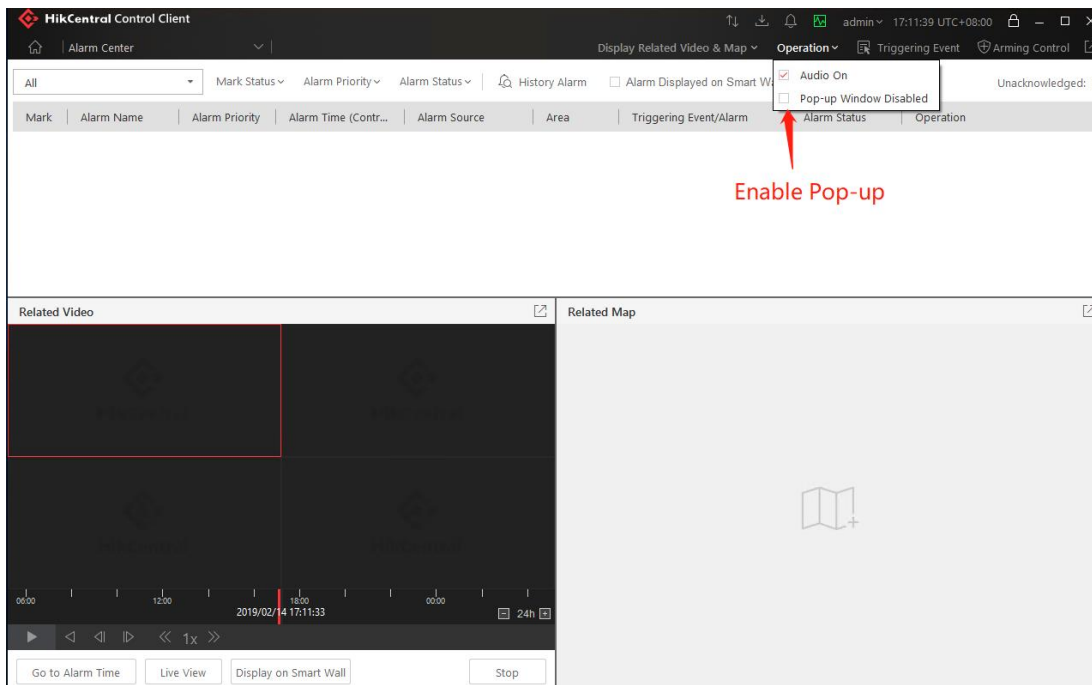
Title:	DS-PEA How to configure in HikCentral	Version:	v1.0	Date:	14/02/2019
Product:	DS-PEA Series Emergency Alarm Device			Page:	7 of 10

5. Configure HikCentral Client.

1. Choose Alarm Center.



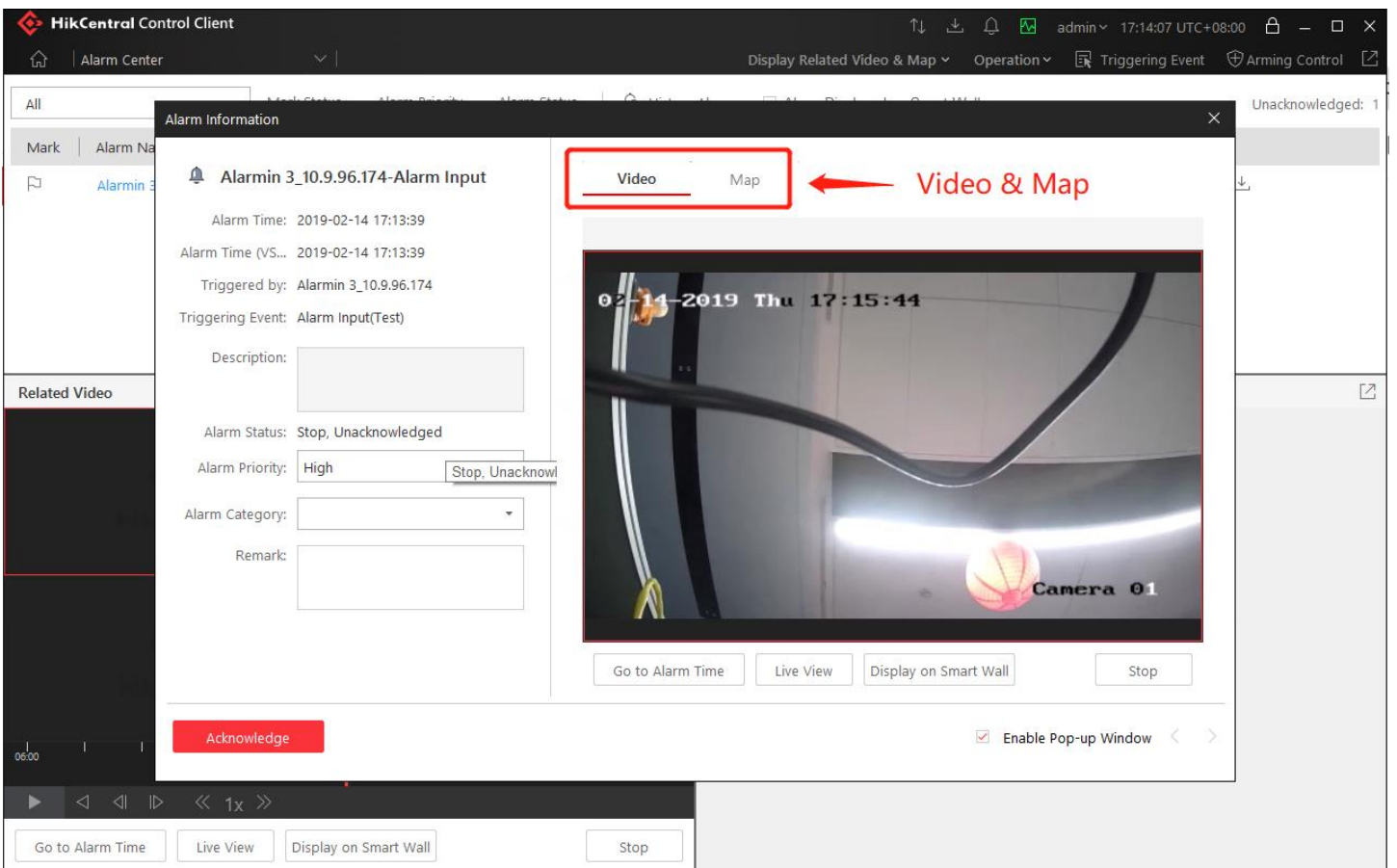
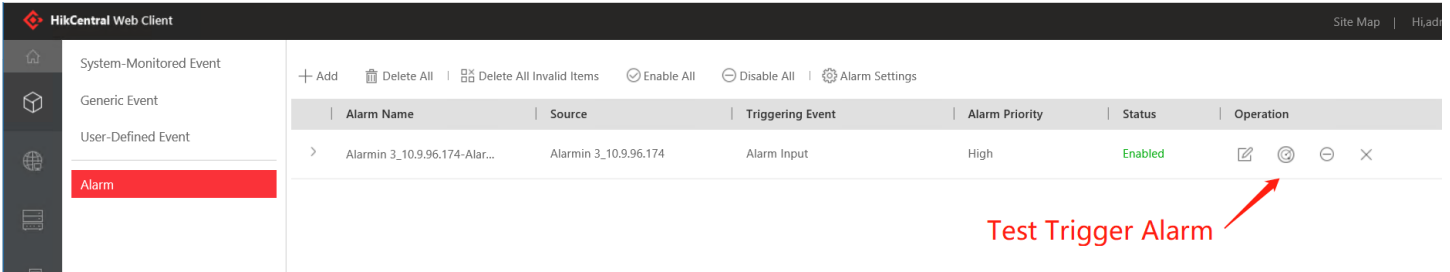
2. Enable Pop-up Window.



Title:	DS-PEA How to configure in HikCentral	Version:	v1.0	Date:	14/02/2019
Product:	DS-PEA Series Emergency Alarm Device			Page:	8 of 10

6. Test Pop up.

1. Test Trigger Alarm by HikCentral Website.
2. You can see the HikCentral Client pop-up window (Include Video and Map).



Title:	DS-PEA How to configure in HikCentral	Version:	v1.0	Date:	14/02/2019
Product:	DS-PEA Series Emergency Alarm Device			Page:	9 of 10

Notice

If you press the Panic button in the Device, and then click answer.

Shows **Two-way audio failed Error Code: Control Client, Audio Intercom.dll[6]**

Reason: The Client PC don't have audio input and output. You need connect sound and microphone.

The screenshot displays the HikCentral Control Client interface. At the top, the title bar reads "HikCentral Control Client" and the system tray shows "admin 18:51:34 UTC+08:00". The main window is titled "Alarm Center" and contains a navigation menu with "Home", "Alarm Center", "Operation", "Triggering Event", and "Arming Control".

The central focus is an "Alarm Information" dialog box for an event titled "Alarmin 3_10.9.96.174-Alarm Input". The event details are as follows:

- Alarm Time: 2019-02-14 18:51:15
- Alarm Time (VS...): 2019-02-14 18:51:15
- Triggered by: Alarmin 3_10.9.96.174
- Triggering Event: Alarm Input_Panic Alarm
- Description: (empty text box)
- Alarm Status: Start, Unacknowledged
- Alarm Priority: High
- Alarm Category: (empty dropdown)
- Remark: (empty text box)

Below the details are buttons for "Acknowledge", "Answer", "Ignore", and "I/O Operation". A checkbox for "Enable Pop-up Window" is checked.

To the right of the alarm information is a video feed window. The video shows a camera view of a room with a basketball hoop and a ball. The timestamp in the video is "02-14-2019 Thu 18:53:21" and the camera is labeled "Camera 01". Below the video are buttons for "Go to Alarm Time", "Live View", "Display on Smart Wall", and "Stop".

An error message box is overlaid on the top right of the video feed, displaying a red "X" icon and the text: "Two-way audio failed Error Code: Control Client, AudioIntercom.dll [6]".

Title:	DS-PEA How to configure in HikCentral	Version:	v1.0	Date:	14/02/2019
Product:	DS-PEA Series Emergency Alarm Device			Page:	10 of 10

First Choice for Security Professionals
HIKVISION Technical Support