

<b>Title:</b>	DS-19A How to Add Hybrid Security Control Panel to iVMS 4200 V3.1	<b>Version:</b>	v1.1	<b>Date:</b>	11/25/2019
<b>Product:</b>	DS-19A Series Network Security Control Panel			<b>Page:</b>	1 of 6

## Preparation

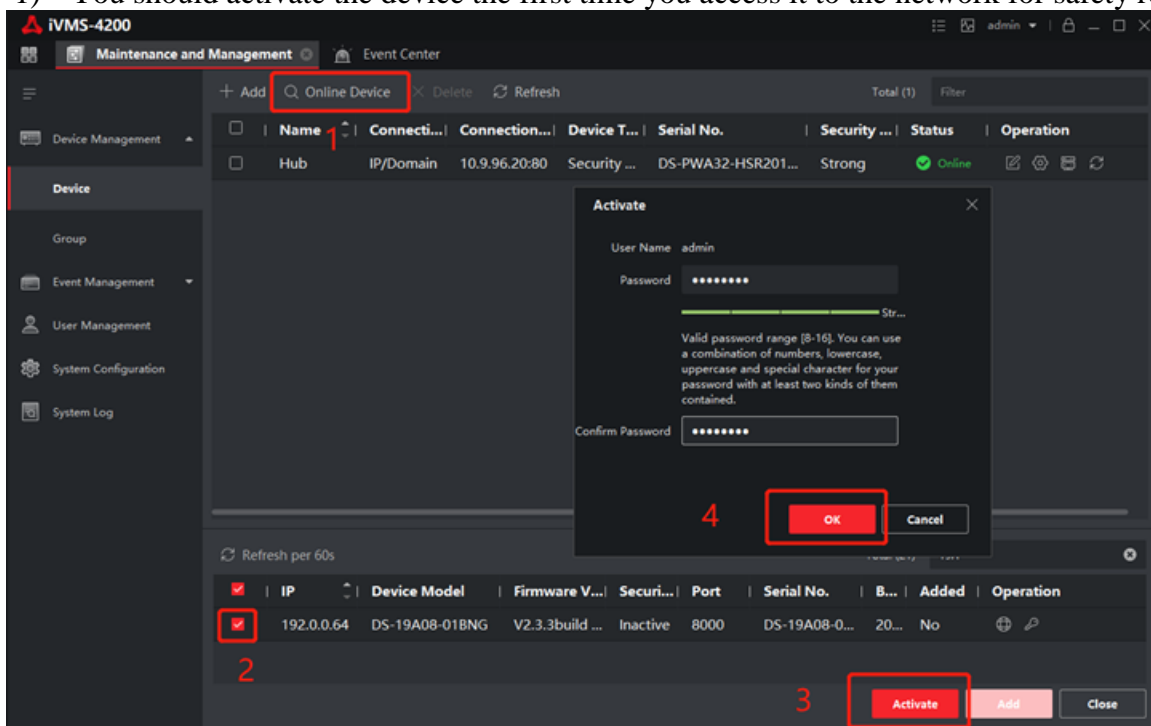
1. Hybrid Security Control Panel, V2.3.3
2. iVMS-4200 (v3.1.1.7 build20190528) or later

## How to Add Hybrid Security Control Panel to iVMS 4200 V3.1

You can login the iVMS-4200 V3.1 Client Software to configure the device's parameters. You can also configure the security control panel's network parameters, alarm, permission, system, log search via the web client.

### 1. Activate the device

- 1) You should activate the device the first time you access it to the network for safety reasons.

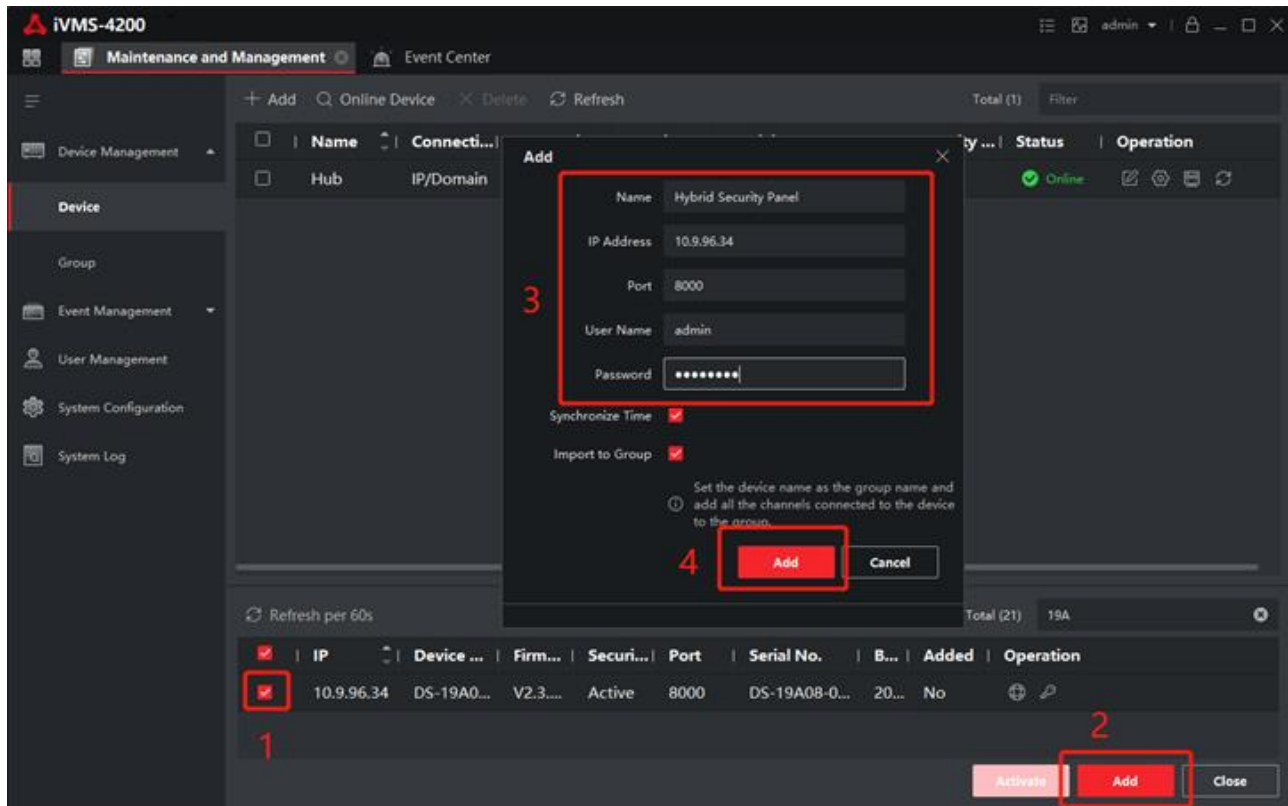


- 2) Click OK.

### 2. Add device to iVMS-4200 V3.1

- 1) Download and install the software. Register to the software and add device in **Maintenance and Management** → **Device Management** → **Device**.
- 2) Add device to iVMS-4200 V3.1.

<b>Title:</b>	DS-19A How to Add Hybrid Security Control Panel to iVMS 4200 V3.1	<b>Version:</b>	v1.1	<b>Date:</b>	11/25/2019
<b>Product:</b>	DS-19A Series Network Security Control Panel			<b>Page:</b>	2 of 6



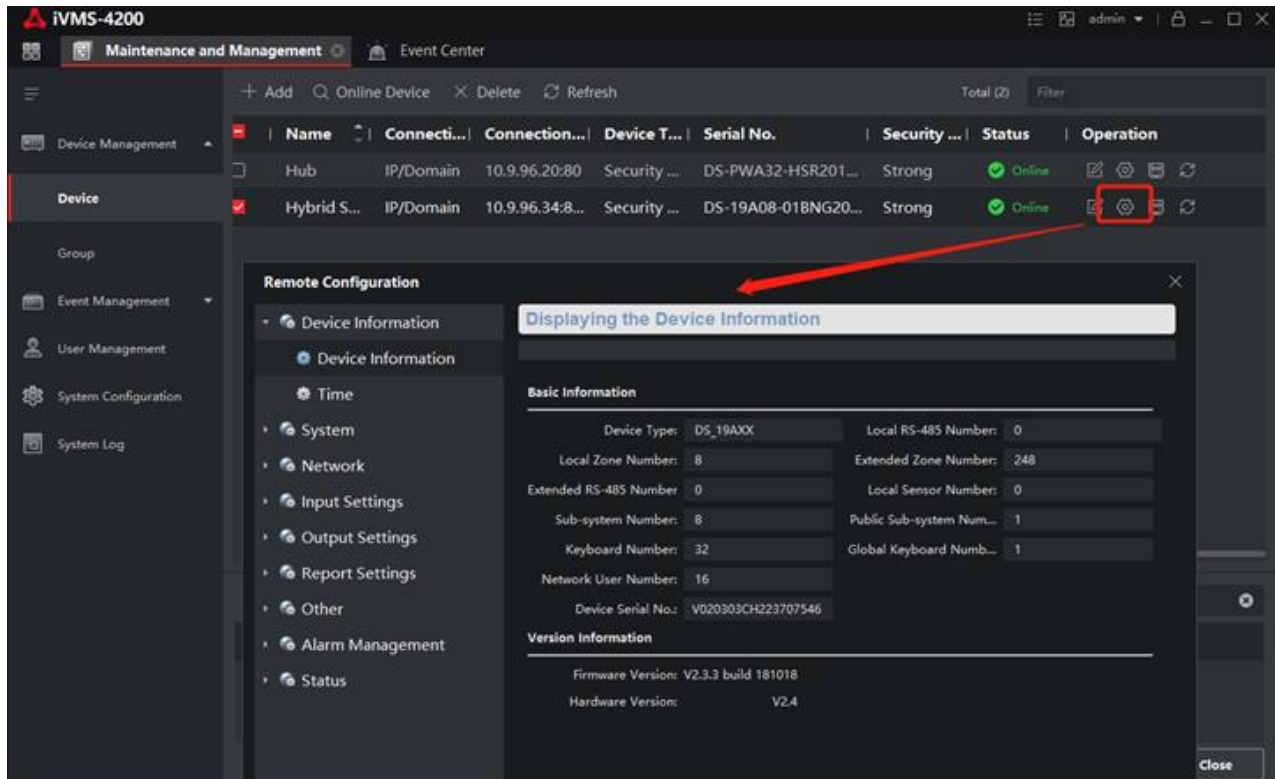
### Note

Device port No. default 8000

The user name and password when adding device are the activation user name and password.

- 3) After the device is completely added, click **Remote Configuration** to enter the device configuration page. You can configure the device parameters in this page.

<b>Title:</b>	DS-19A How to Add Hybrid Security Control Panel to iVMS 4200 V3.1	<b>Version:</b>	v1.1	<b>Date:</b>	11/25/2019
<b>Product:</b>	DS-19A Series Network Security Control Panel			<b>Page:</b>	3 of 6

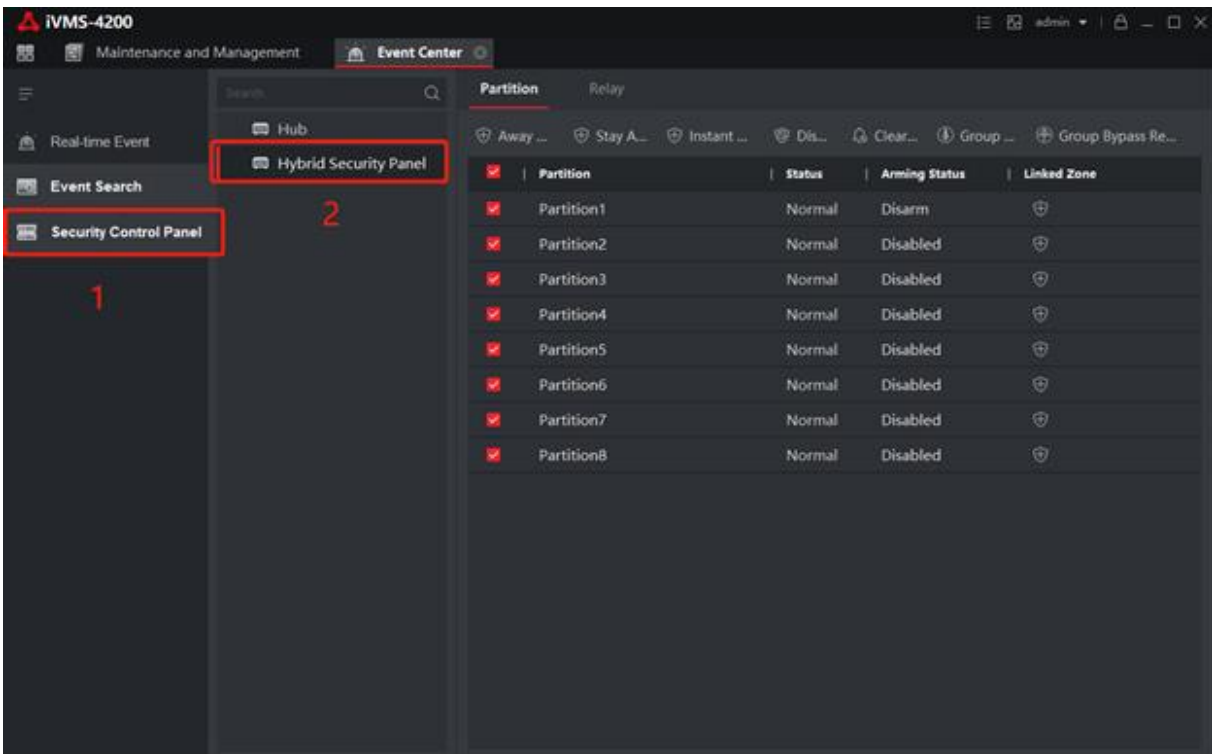
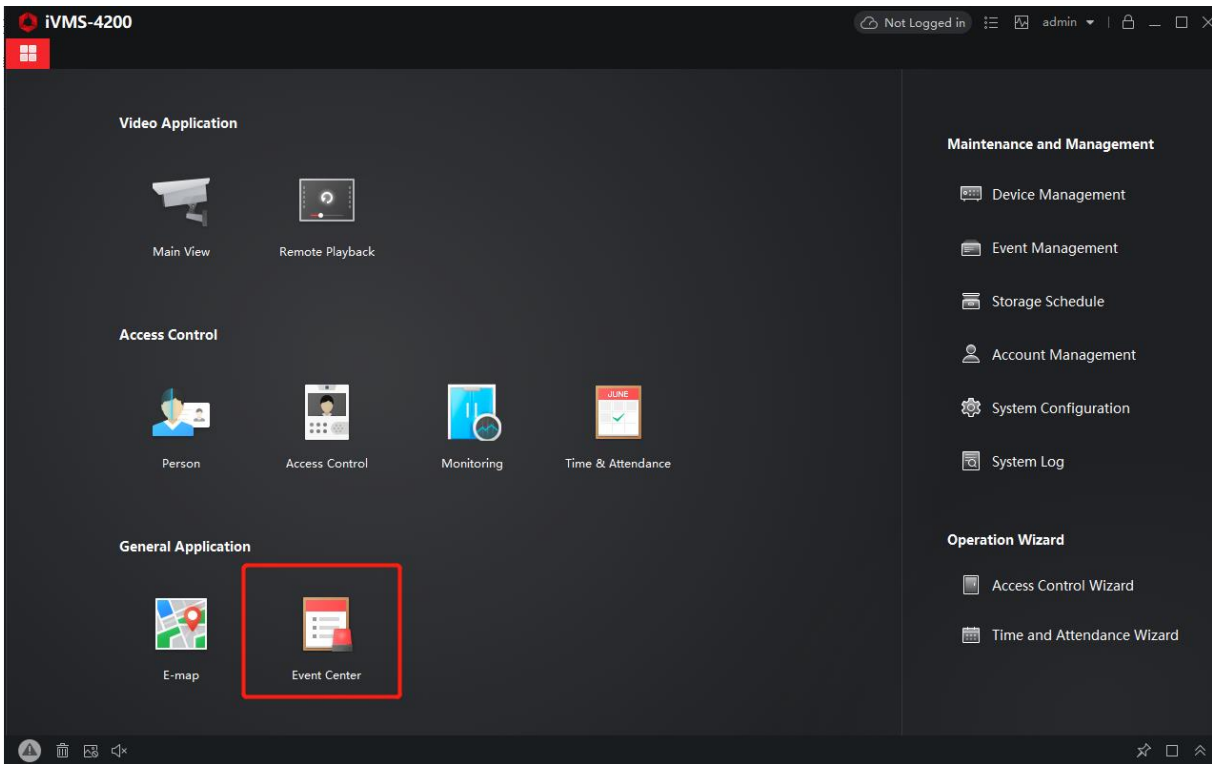


### 3. Remote control device by iVMS-4200 V3. 1

1) Event Center → Security control panel → Device name.

You can **Away Arming**, **Stay Arming**, **Instant Arming**, **Disarming**, **Clear Alarm**, **Group bypass** by iVMS-4200 V3.1.

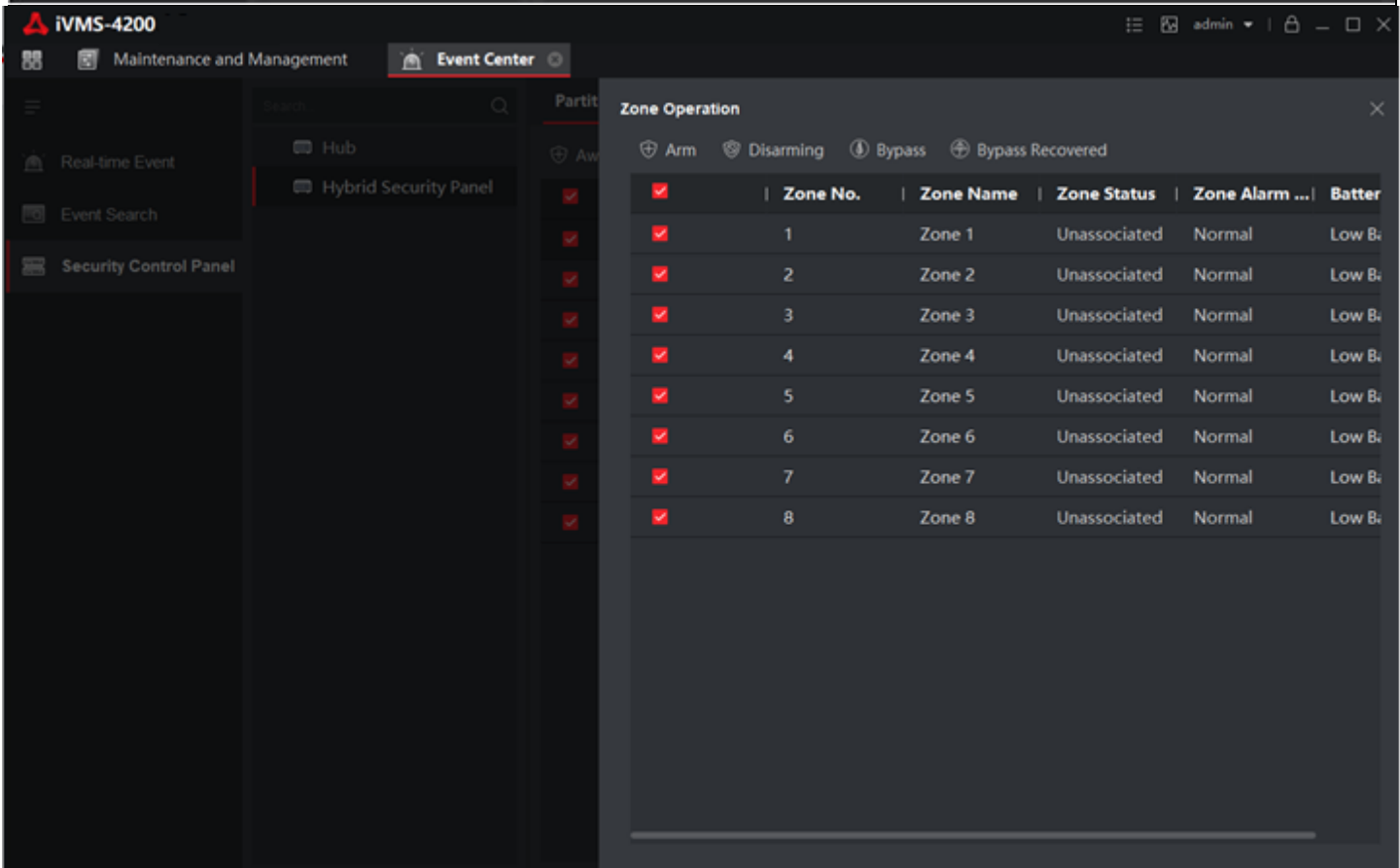
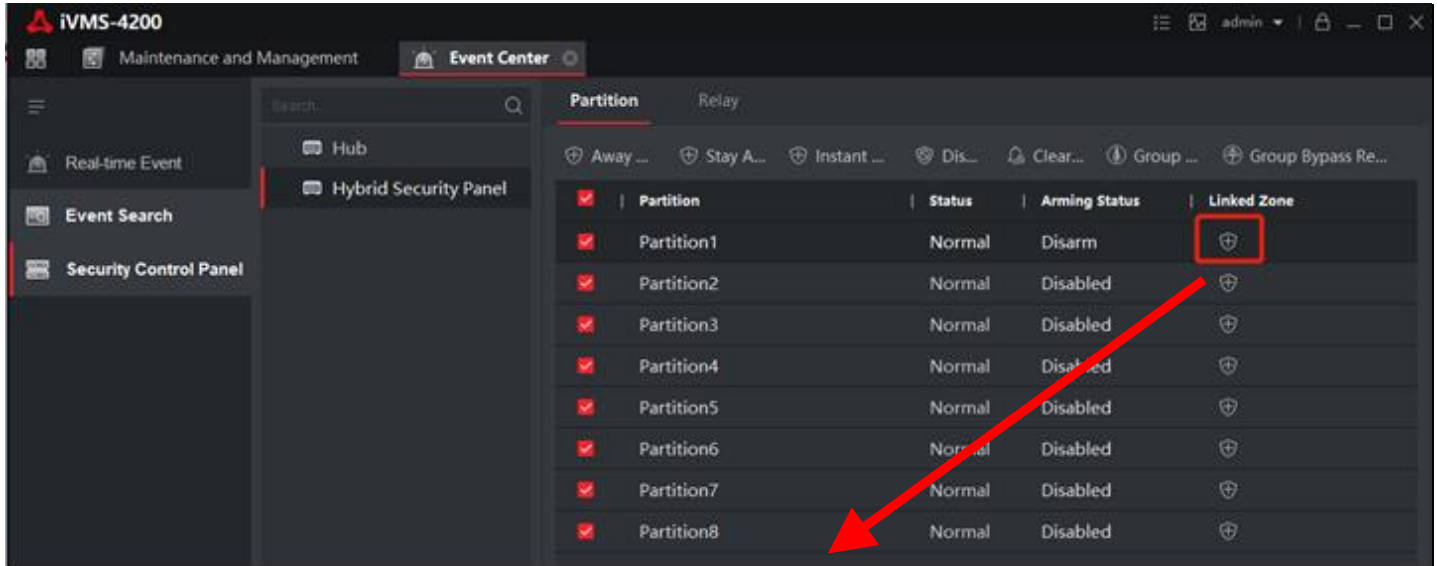
<b>Title:</b>	DS-19A How to Add Hybrid Security Control Panel to iVMS 4200 V3.1	<b>Version:</b>	v1.1	<b>Date:</b>	11/25/2019
<b>Product:</b>	DS-19A Series Network Security Control Panel			<b>Page:</b>	4 of 6



<b>Title:</b>	DS-19A How to Add Hybrid Security Control Panel to iVMS 4200 V3.1	<b>Version:</b>	v1.1	<b>Date:</b>	11/25/2019
<b>Product:</b>	DS-19A Series Network Security Control Panel			<b>Page:</b>	5 of 6

## 2) Linked zone.

You can **Check zone status**, **zone bypass** by iVMS-4200 V3.1.





<b>Title:</b>	DS-19A How to Add Hybrid Security Control Panel to iVMS 4200 V3.1	<b>Version:</b>	v1.1	<b>Date:</b>	11/25/2019
<b>Product:</b>	DS-19A Series Network Security Control Panel			<b>Page:</b>	6 of 6

**First Choice for Security Professionals**  
***HIKVISION* Technical Support**