

<b>Title:</b>	DS-K4H250/450/258 series magnetic lock connect to DS-K2600 series Access Controller	<b>Version:</b>	v1.0	<b>Date:</b>	01/11/2018
<b>Product:</b>	Access Control Device	<b>Page:</b>	1 of 9		



## DS-K4H250/450/258 series magnetic lock connect to DS-K2600 series Access Controller

### Preparation

Connecting magnetic lock to access controller is mainly applied to swiping card to open the door for exiting. For magnetic lock and access controller in this document, please check the table below:

Magnetic Lock	Access Controller
DS-K4H250S	DS-K2601 DS-K2602 DS-K2604
DS-K4H250D	
DS-K4H450D	
DS-K4H258S	DS-K2604
DS-K4H258D	

### Note

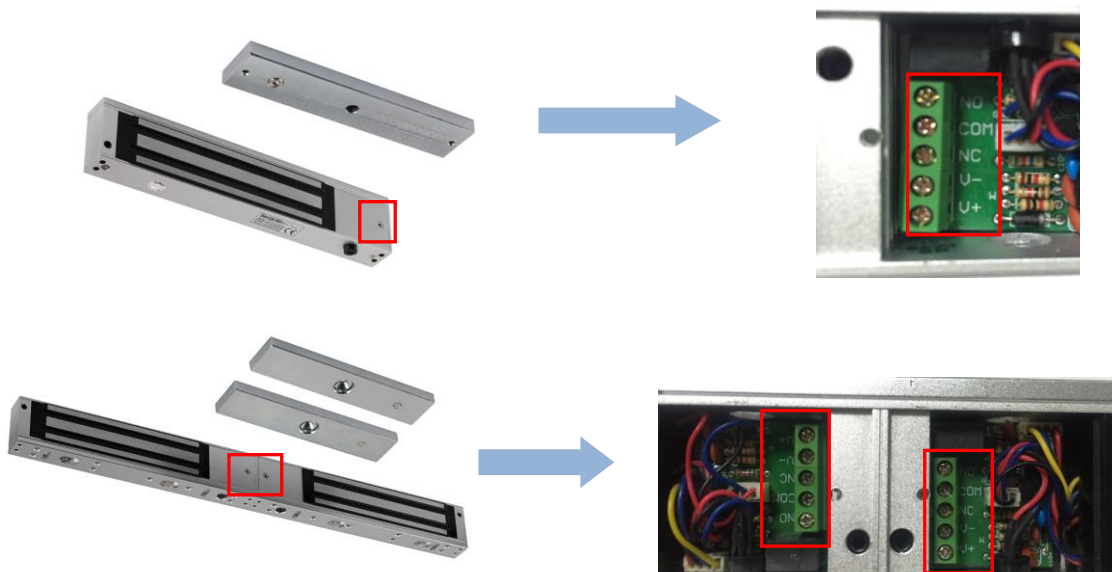
This document is simply used to guide users how to wire correctly and ensure access controllers can control locks.

The access controller model in this document is DS-K2604.

Part 1 is mainly for magnetic lock wiring, and Part 2 and Part 3 are mainly for the situation that users could get the door status on iVMS-4200 Client.

### Notice

1. Please cut off power supply before wiring;
2. Please use a tool to screw magnetic lock screws in following picture, and remove the cover of magnetic lock, find V+/V- and NO/NC & COM interfaces of magnetic lock in following picture;



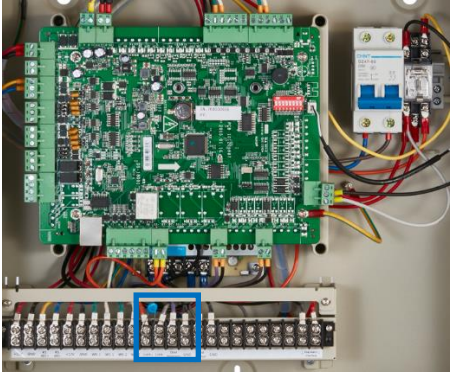
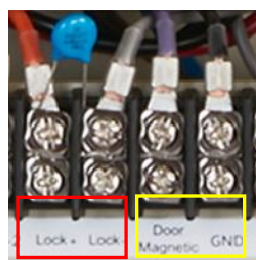
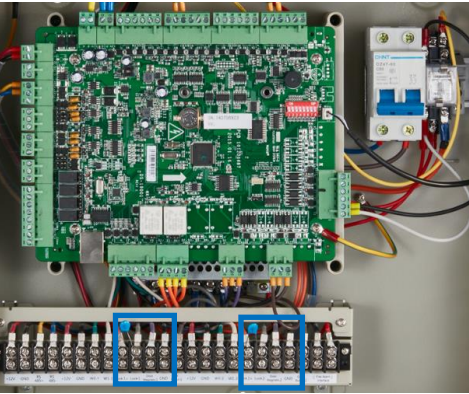
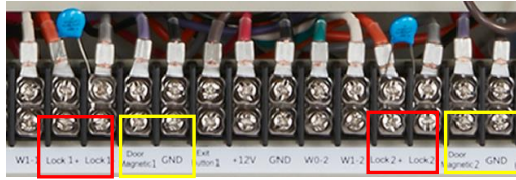
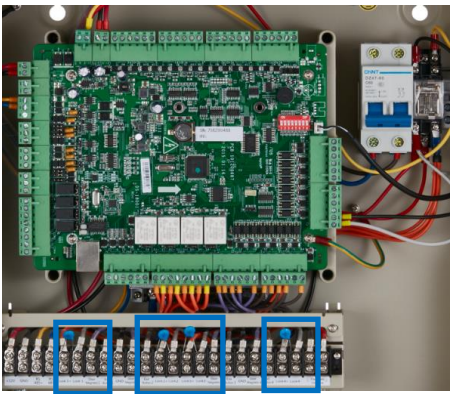
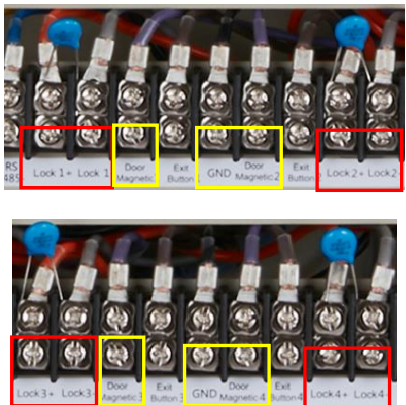
<b>Title:</b>	DS-K4H250/450/258 series magnetic lock connect to DS-K2600 series Access Controller	<b>Version:</b>	v1.0	<b>Date:</b>	01/11/2018
<b>Product:</b>	Access Control Device	<b>Page:</b>	2 of 9		



Interface	Description	Note
V+/V-	Power Supply	
NO/NC, COM	Door Magnetic Singnal Output	DS-K4H258S/D series magnetic locks don't have NO/NC and COM interfaces

3. Correspondingly, there are lock and door magnetic interfaces in DS-K2600 series access controllers, as pictures show:

Note:  means lock interface;  means door magnetic interface;

Access Controller	Interface
<p>DS-K2601</p> 	
<p>DS-K2602</p> 	
<p>DS-K2604</p> 	

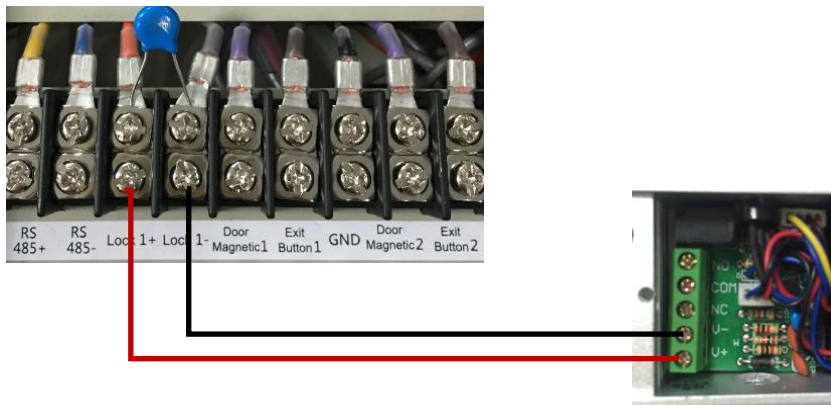
<b>Title:</b>	DS-K4H250/450/258 series magnetic lock connect to DS-K2600 series Access Controller	<b>Version:</b>	v1.0	<b>Date:</b>	01/11/2018
<b>Product:</b>	Access Control Device	<b>Page:</b>	3 of 9		



## Part 1: Lock+ & Lock- Wiring

### DS-K4H250S & DS-K4H258S

Please connect as the following picture:

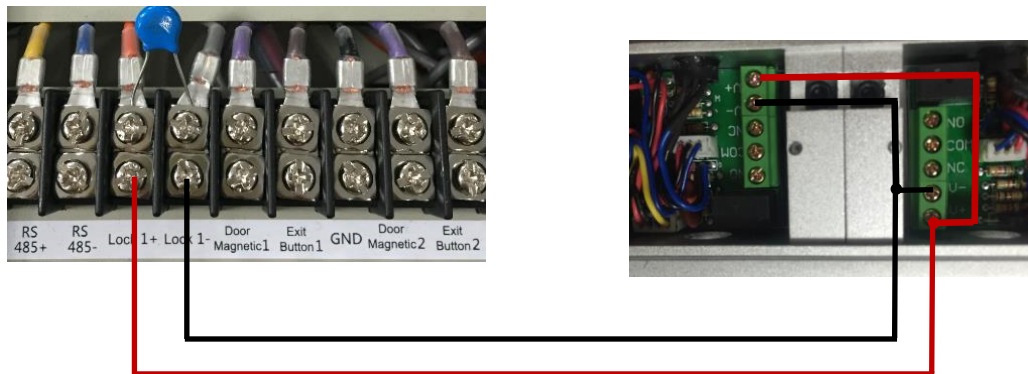


Magnetic lock LED status:

Normal(Close Door)	Normal(Open Door)	Abnormal

### DS-K4H250D & DS-K4H450D & DS-K4H258D

Please connect as the following picture:



Magnetic lock LED status:

Normal(Close Door)	Normal(Open Door)	Abnormal

<b>Title:</b>	DS-K4H250/450/258 series magnetic lock connect to DS-K2600 series Access Controller	<b>Version:</b>	v1.0	<b>Date:</b>	01/11/2018
<b>Product:</b>	Access Control Device	<b>Page:</b>	4 of 9		

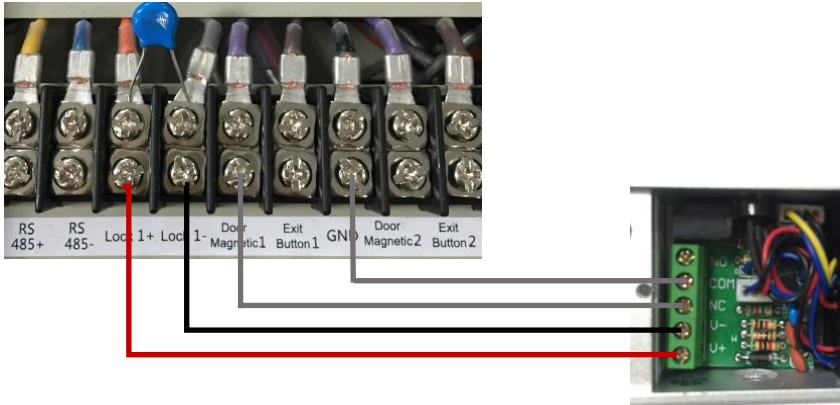


## Part 2: Lock+/Lock- & NC/COM Wiring

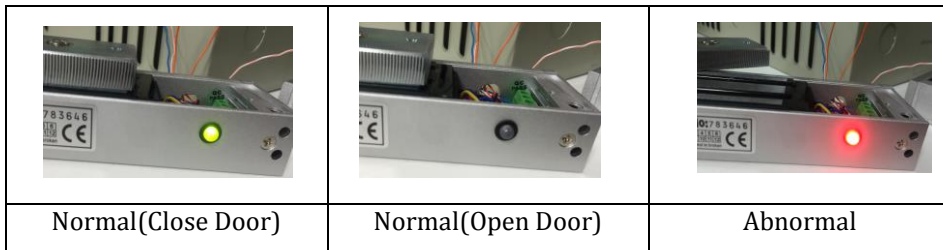
### Step 1:

#### DS-K4H250S

Please connect as the following picture:

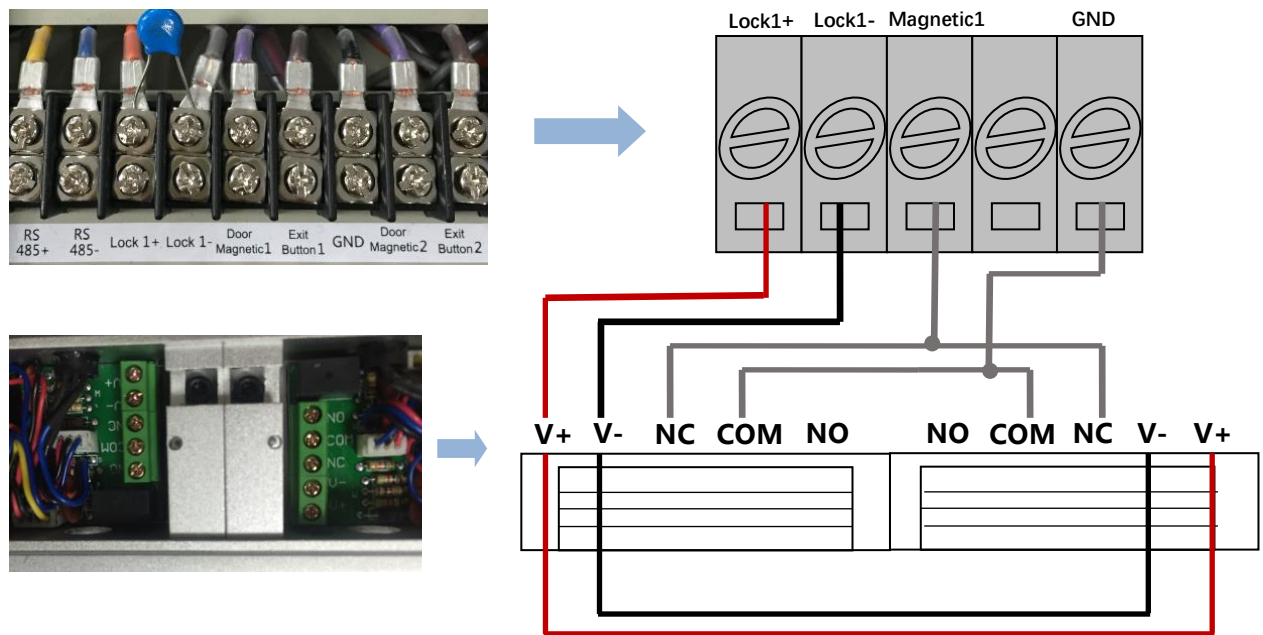


Magnetic lock LED status:



#### DS-K4H250D & DS-K4H450D

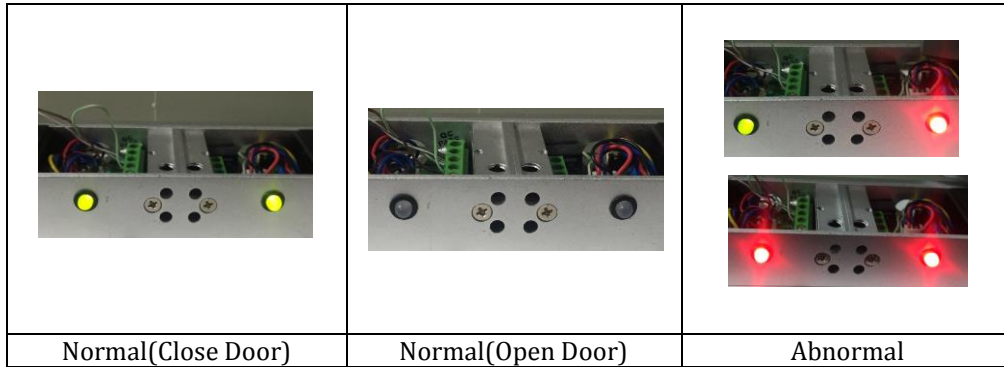
Please connect as the following picture:



<b>Title:</b>	DS-K4H250/450/258 series magnetic lock connect to DS-K2600 series Access Controller	<b>Version:</b>	v1.0	<b>Date:</b>	01/11/2018
<b>Product:</b>	Access Control Device	<b>Page:</b>	5 of 9		

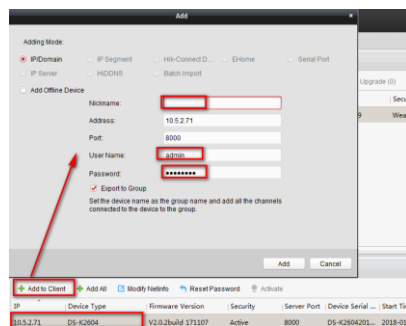


Magnetic lock LED status:




**Step 2:**

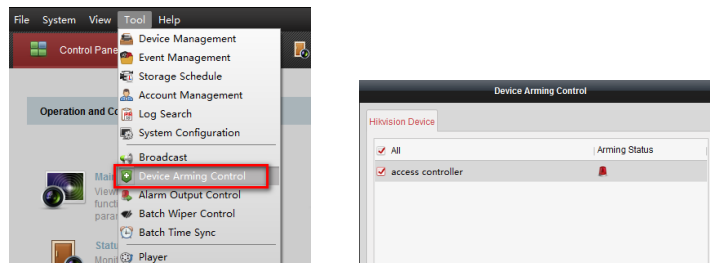
Add access controller to iVMS-4200 Client;



**Step 3:**

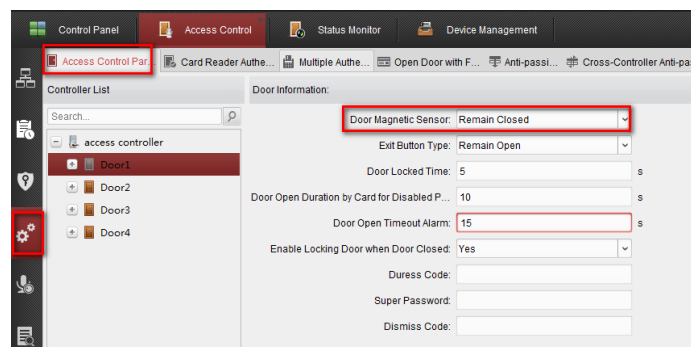
Click **Tool** → **Device Arming Control**, check your access controller arming status;

The icon  means device was armed by iVMS-4200 Client;



**Step 4:**

Enter **Access Control** → **Advanced Function** → **Access Control Parameters** interface, set **Door Magnetic Sensor** as **Remian Closed**, and it should be consistent with the wiring of Door Magnetic Singnal Output;



<b>Title:</b>	DS-K4H250/450/258 series magnetic lock connect to DS-K2600 series Access Controller	<b>Version:</b>	v1.0	<b>Date:</b>	01/11/2018
<b>Product:</b>	Access Control Device	<b>Page:</b>	6 of 9		



**Step 5:**

Enter **Status Monitor** → **Door Status** interface, open the door, check door status on iVMS-4200 Client and the magnetic lock LED status;

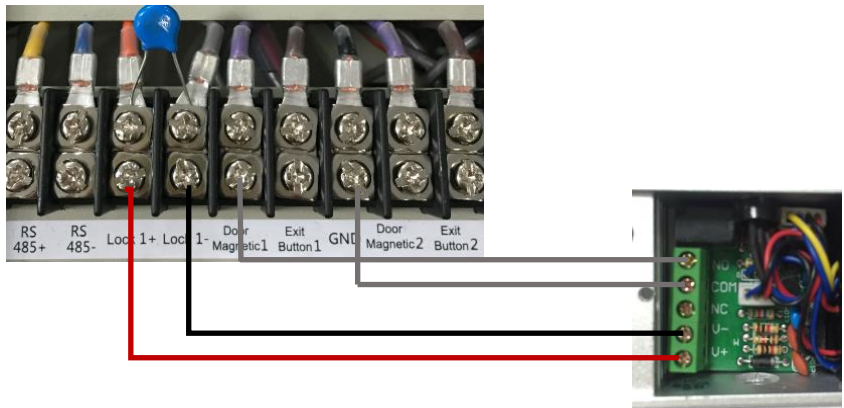
Magnetic Lock LED status			
Door Status			
Alarm Event			

**Part 3: Lock+/Lock- & NO/COM Wiring**

**Step 1:**

**DS-K4H250S**

Please connect as the following picture:



Magnetic lock LED status:

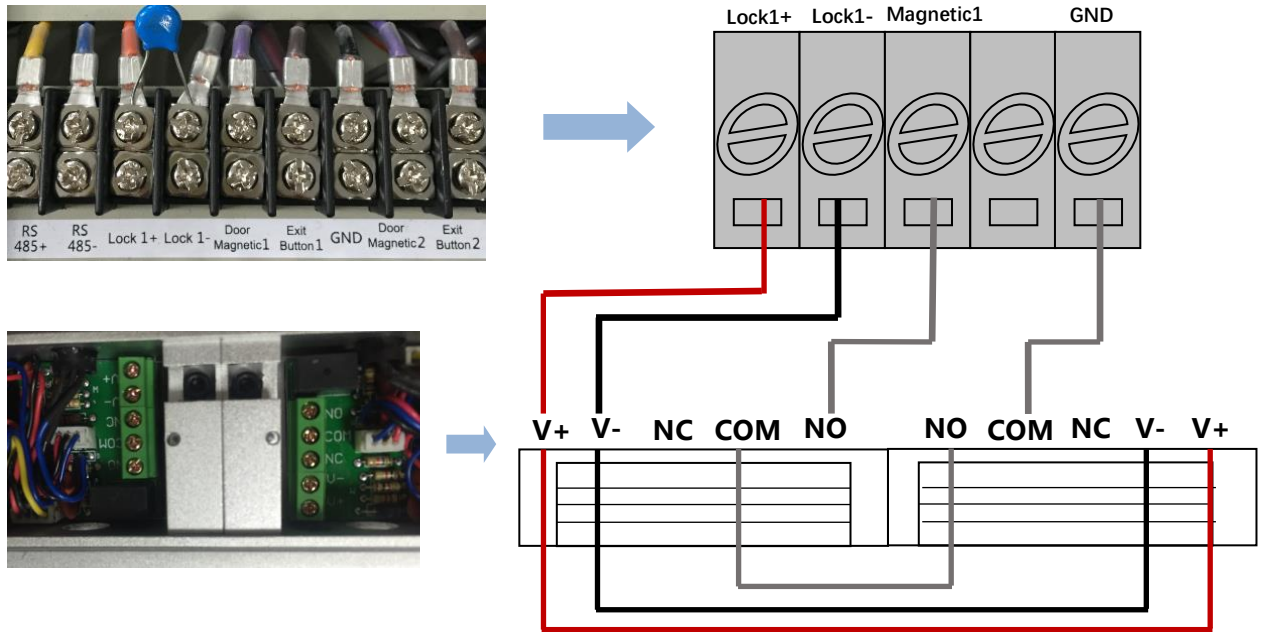
Normal(Close Door)	Normal(Open Door)	Abnormal

<b>Title:</b>	DS-K4H250/450/258 series magnetic lock connect to DS-K2600 series Access Controller	<b>Version:</b>	v1.0	<b>Date:</b>	01/11/2018
<b>Product:</b>	Access Control Device	<b>Page:</b>	7 of 9		

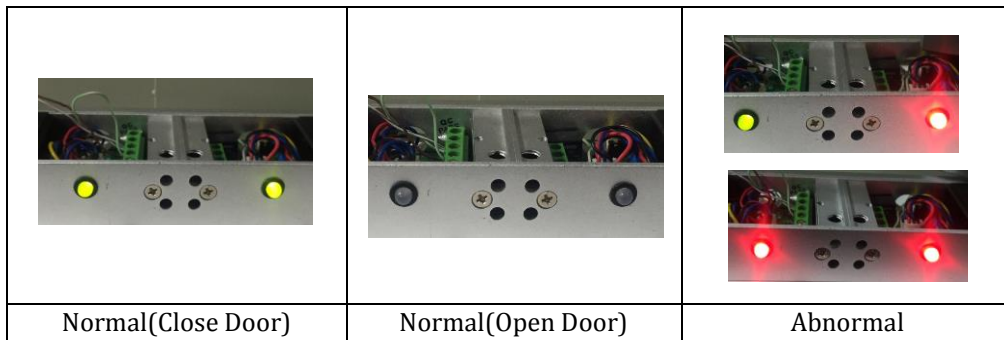


### DS-K4H250D & DS-K4H450D

Please connect as the following picture:

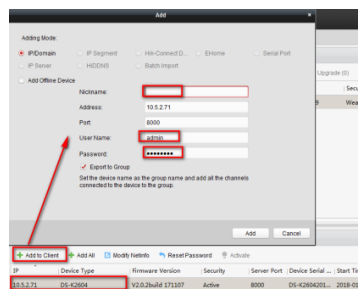


Magnetic lock LED status:



### Step 2:

Add access controller to iVMS-4200 Client;

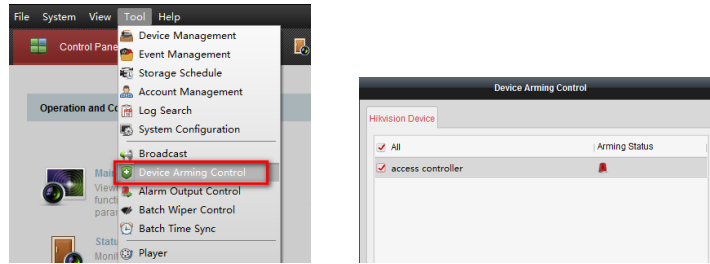


### Step 3:

Click **Tool** → **Device Arming Control**, check your access controller arming status;

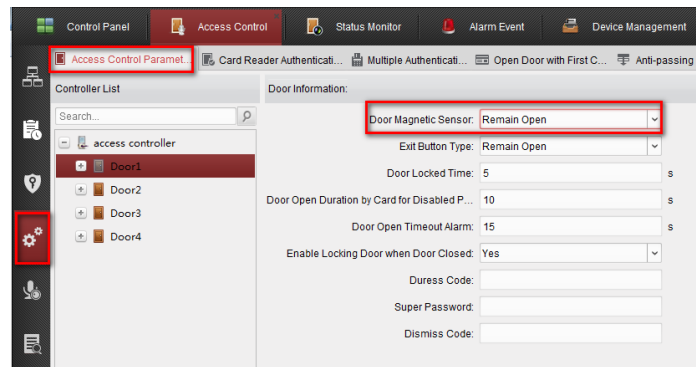
The icon means device was armed by iVMS-4200 Client;

<b>Title:</b>	DS-K4H250/450/258 series magnetic lock connect to DS-K2600 series Access Controller	<b>Version:</b>	v1.0	<b>Date:</b>	01/11/2018
<b>Product:</b>	Access Control Device	<b>Page:</b>	8 of 9		



**Step 4:**

Enter **Access Control** → **Advanced Function** → **Access Control Parameters** interface, set **Door Magnetic Sensor** as **Remian Open**, and it should be consistent with the wiring of Door Magnetic Singnal Output;



**Step 5:**

Enter **Status Monitor** → **Door Status** interface, open the door, check door status on iVMS-4200 Client and the magnetic lock LED status;

Magnetic Lock LED status			
Door Status			
Alarm Event			

**NOTE:** Abnormal in *Magnetic lock LED status* part could be displayed in following scenario, open door timeout, abnormally open door(by force), as well as not standard installation causing armature plate and lock body contact are not fully fitted.



<b>Title:</b>	DS-K4H250/450/258 series magnetic lock connect to DS-K2600 series Access Controller	<b>Version:</b>	v1.0	<b>Date:</b>	01/11/2018
<b>Product:</b>	Access Control Device	<b>Page:</b>	9 of 9		



**First Choice for Security Professionals**

***HIK*VISION Technical Support**