


## DS-K2600 Connect to DS-K1201MF and Open Door with Fingerprint or Card

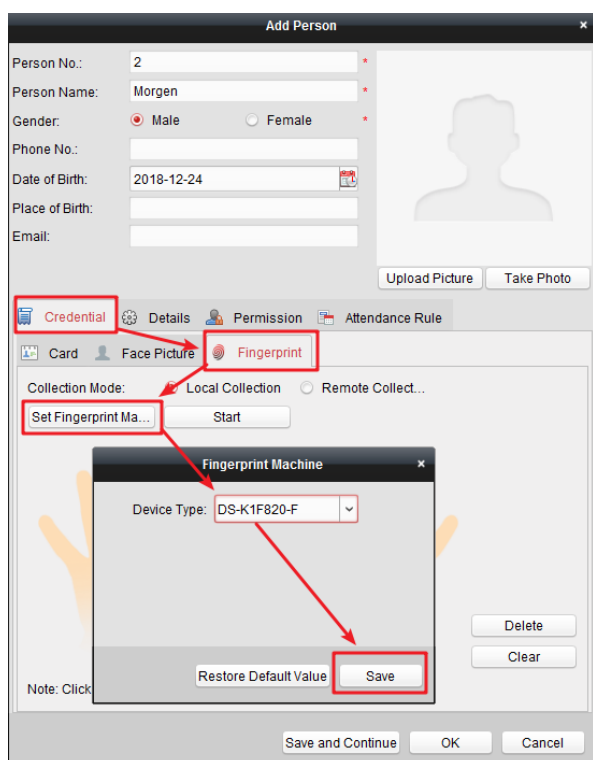
### 1. Operation Process

- 1) Connect DS-K1201MF fingerprint reader to DS-K2600 access controller;
- 2) Add fingerprint in iVMS-4200;
- 3) Card management;
- 4) Advanced function configuration;
- 5) Synchronize permission to device;
- 6) Verify fingerprint or swipe card.

### 2. Operation Steps:

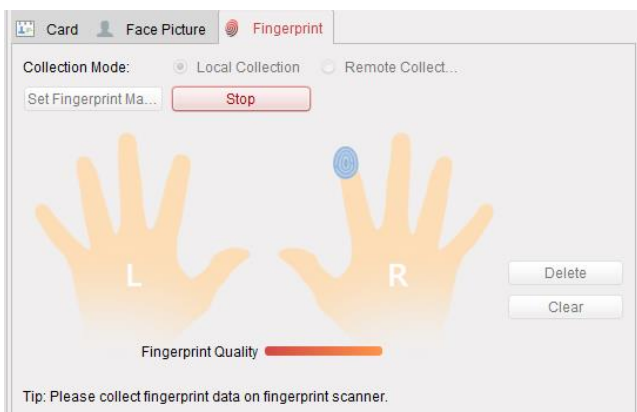
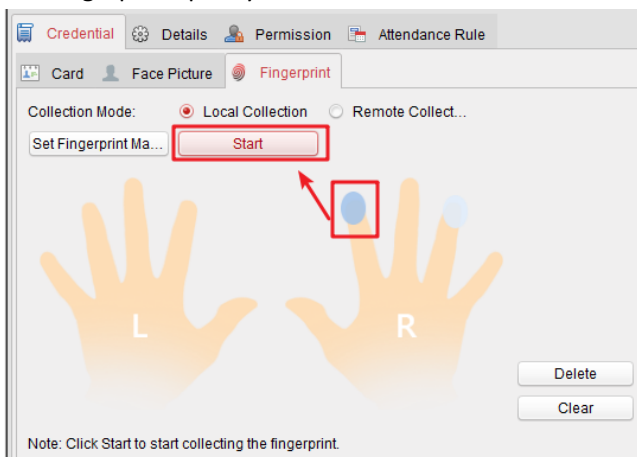
- 1) Connect DS-K1201MF fingerprint reader to DS-K2600 access controller;
  - a) DS-K1201MF fingerprint reader should be connected to DS-K2600 through RS485, RED(+12 V) and BLACK(GND) cable connect to 12V power output, YELLOW connect to RS485+ and BLUE to RS485-;
  - b) Reader DIP-switch setting: Address 1 for door1 entrance, 2 for door1 exit, 3 for door2 entrance, 4 for door2 exit, and so on
- 2) Add fingerprint in iVMS-4200;

- a) In access control module, select person and card menu  from left side, then add organization before add person;
- b) Add person and input person name, then go to Credential → Fingerprint , select fingerprint enrollment station type as DS-K1F820-F and save;



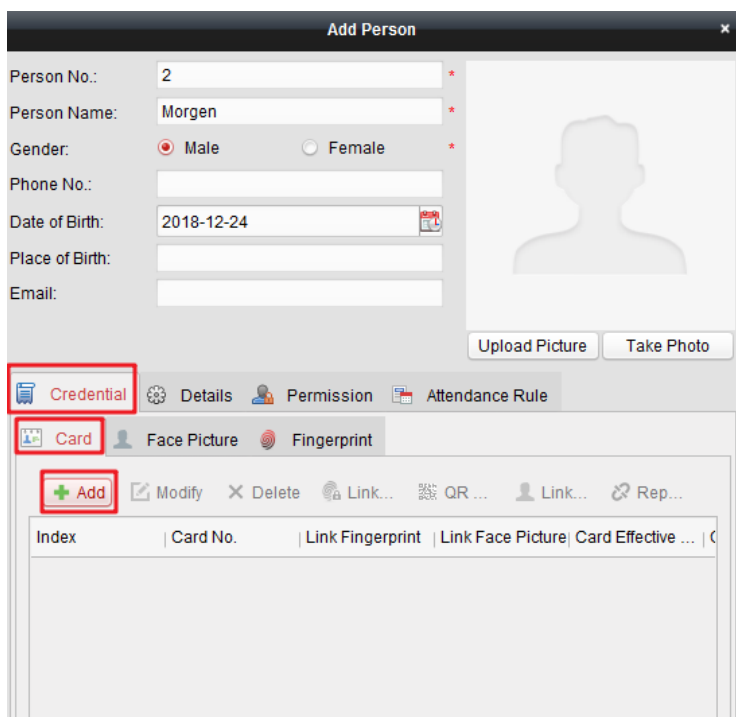
## DS-K2600 Connect to DS-K1201MF and Open Door with Fingerprint or Card

- c) Select fingerprint and click Start to enroll fingerprint, after press finger on device 3 times, we can see fingerprint quality and click OK;



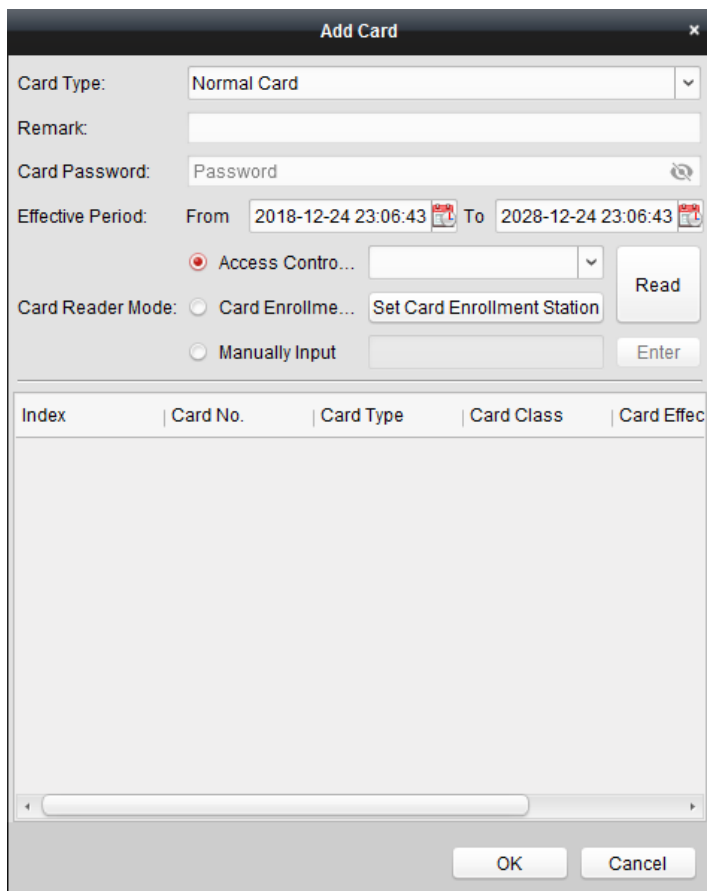
### 3) Card management

- a) Go to Credential → Card and click Add to add card number;



## DS-K2600 Connect to DS-K1201MF and Open Door with Fingerprint or Card

- b) Add card number, we can input manually or add from DS-K1F100-D8E card issuer or other online fingerprint terminal;

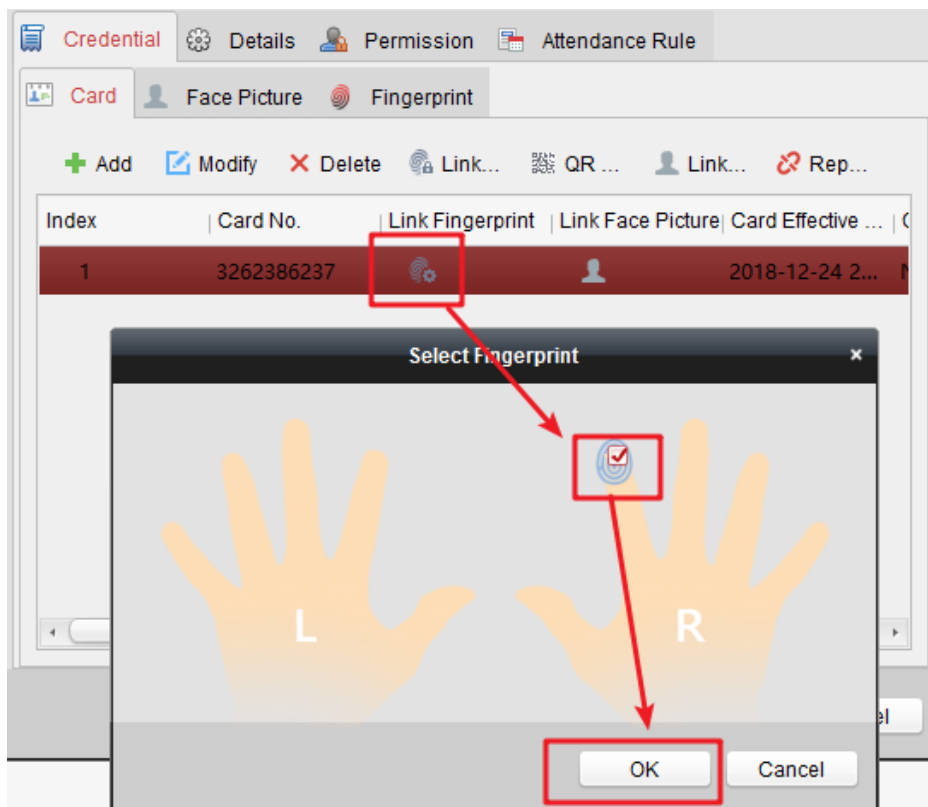


The 'Add Card' dialog box contains the following fields and options:

- Card Type: Normal Card
- Remark: (empty text field)
- Card Password: Password
- Effective Period: From 2018-12-24 23:06:43 To 2028-12-24 23:06:43
- Access Control: (radio button selected)
- Card Reader Mode: Card Enrollment... (radio button), Manually Input (radio button)
- Buttons: Read, Set Card Enrollment Station, Enter, OK, Cancel

Index	Card No.	Card Type	Card Class	Card Effect
-------	----------	-----------	------------	-------------

- c) After add card, link fingerprint to the card and click OK→OK;



The screenshot shows the 'Credential' management interface with the 'Card' tab selected. A table lists the added card, and a 'Link Fingerprint' dialog box is overlaid on top.

Index	Card No.	Link Fingerprint	Link Face Picture	Card Effective ...
1	3262386237			2018-12-24 2...

The 'Select Fingerprint' dialog box shows two hand icons labeled 'L' and 'R'. The 'R' hand icon has a checkmark, and the 'OK' button is highlighted.

## DS-K2600 Connect to DS-K1201MF and Open Door with Fingerprint or Card

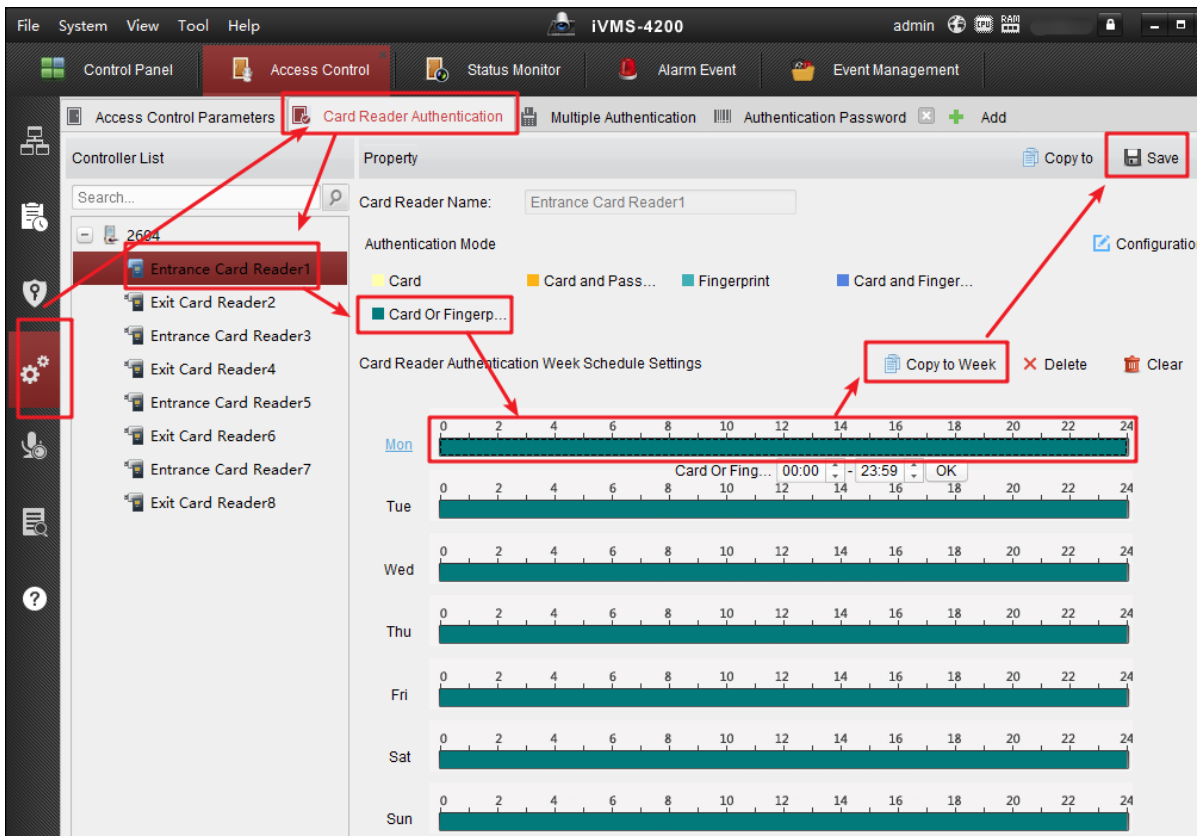
d) Fingerprint quantity can be found from person list if add successfully;

4) Advanced function configuration;



a) Select advanced function from left side to enter advanced function configuration and click Card Reader Authentication menu on the top;

b) Select related card reader from the list, click "Fingerprint" verification mode and drag to whole week in the week template, after that click save (click "copy to" button to apply same setting to other readers), then it will prompt save success in the down right corner;



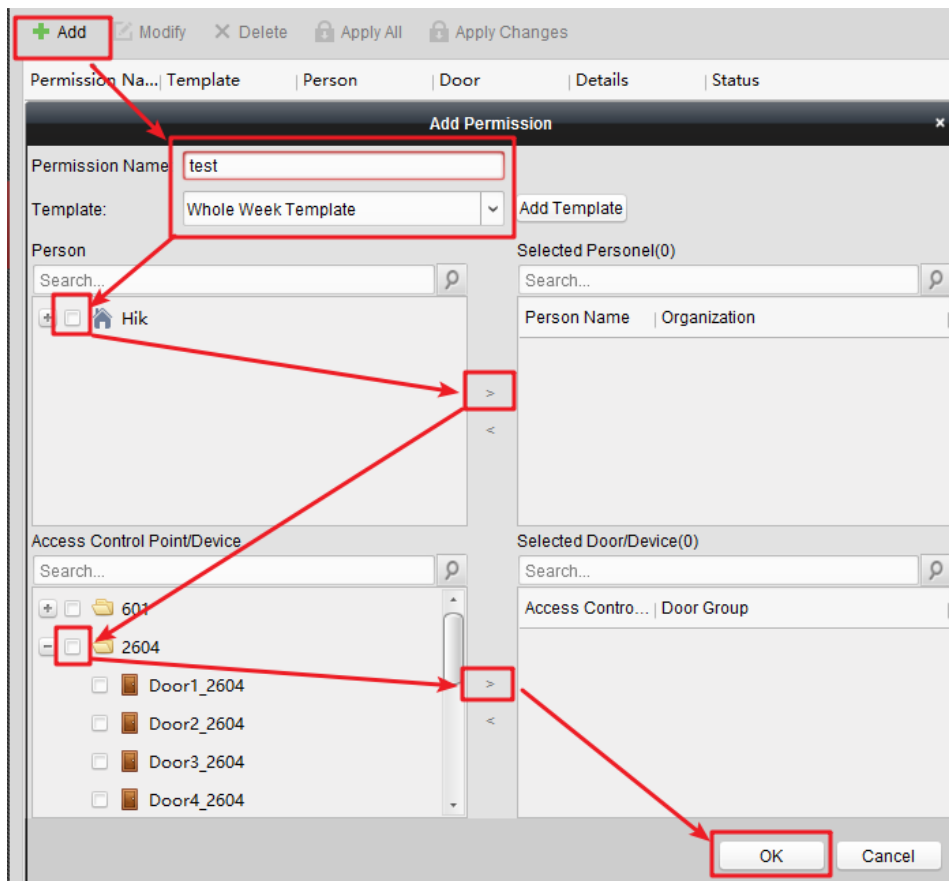
5) Synchronize permission to device;



a) Select permission from left side to enter permission group configuration interface;

b) Click Add to create new permission group;

## DS-K2600 Connect to DS-K1201MF and Open Door with Fingerprint or Card



- c) Input permission name, select template, then add person and access control point/device to the right side, click OK to finish;
- d) iVMS-4200 will prompt a window and select sync now to apply the setting to DS-K2600 controller;

### 6) Verify fingerprint.

Swipe card or press finger on reader DS-K1201MF to open the door;

### Suitable Models:

Model	
DS-K2601(-G)	Single Door Access Controller
DS-K2602(-G)	Two-Door Access Controller
DS-K2604(-G)	Four-Door Access Controller