



HIKVISION:  
**Solutions for  
Assisted Living  
Facilities**

---

An Overview of Hikvision Security Solutions for Patient Safety  
and Smarter Facilities

**HIKVISION**<sup>®</sup>



# Keeping Residents Safe and Secure in Assisted Living Facilities

Assisted living facilities have to comply with regulations, provide comprehensive assistance to residents and support to loved ones, all while maintaining a safe and secure facility. As budgets shrink, the need to do more with less is increasingly important.

In addition to improving building safety and security, and better protecting residents and employees, Hikvision solutions introduce new efficiencies for better video surveillance and record-keeping.

Hikvision video surveillance and analytics can provide additional intelligence data to help staff quickly react to alerts and resident needs. Access control and intercom solutions enable controlled access to sensitive areas such as stored medications, while allowing ease of access for those with pre-approved credentials. Video surveillance and access control also deter and prevent the dangerous and costly elopement of memory care residents.

## HIKVISION SOLUTIONS HELP ASSISTED LIVING FACILITIES OVERCOME THESE CHALLENGES, AND MORE:

- **Patient Elopement:** Prevent wandering of high-risk memory care patients through unauthorized exits.
- **Low Total Cost of Ownership:** Hikvision provides a wide-range of affordable security systems for robust coverage on a budget.
- **Flexible Security Environment for Patient Safety:** Surveillance, access control, and facial recognition solutions enable round-the-clock monitoring of memory care patients, allowing residents to move around freely.
- **Reduction in Violence:** Hikvision solutions can deter violence, encourage positive behavior, and document incidents in high resolution video and imagery.
- **Scalable and Flexible:** Hikvision solutions are both scalable and flexible, and work with both IP and analog cameras.

# Hikvision's Centralized Management System

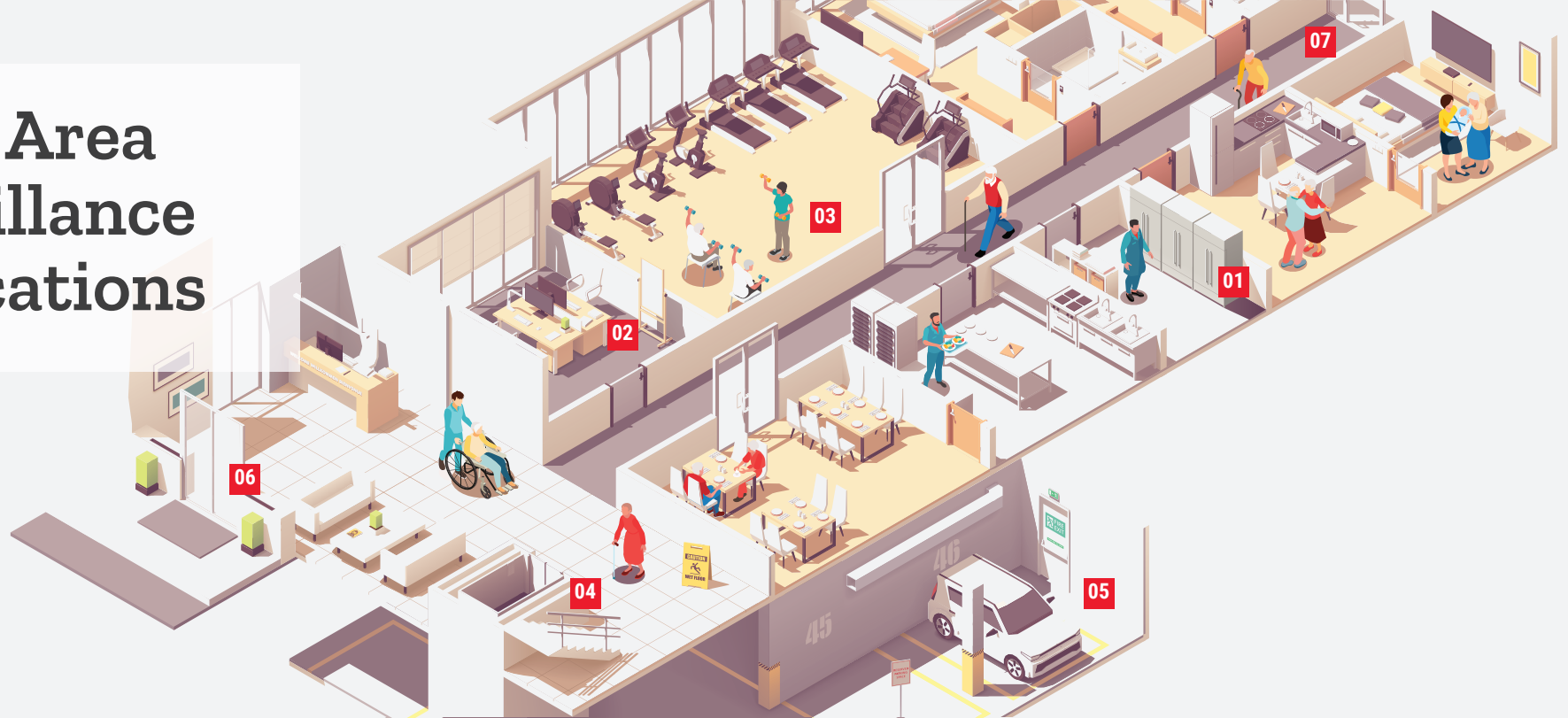
HikCentral, Hikvision's centralized management system (CMS), helps assisted living facilities more easily maintain a safe and secure environment by providing the following benefits:

- HikCentral provides onboard analytics giving nursing staff immediate response videos for: Slip and Fall, Patient Wandering (Elopement), Restricted Area Violations, and Two-Person Rule requirements.
- HikCentral leverages highly accurate biometrics technology (i.e. fingerprint, facial recognition) to quickly identify nurses, caregivers, and residents, allowing for freedom of movement while keeping everyone safe. These features can prevent patient elopement, improve safety and reduce operational costs.
- HikCentral elevates situational awareness through video wall deployments, the use of area maps and building floorplans. It can also reduce response time and increase efficiency for strategic routing of alarm signals.
- HikCentral uses Hikvision's queuing technology to monitor and supervise wait times and understaffed areas. Discreet and accurate people counting analytics enable occupancy tracking throughout the facility for patient safety and staff auditing.
- HikCentral enhances controlled access points inside and outside of buildings. License Plate Recognition (LPR) and access control technology support visitor management by improving ease of identification in authorized areas for residents, visitors, and employees.

## HIKCENTRAL CENTRALIZED SECURITY ECOSYSTEM



# Broad Area Surveillance Applications



## MAP LEGEND

### 01 Pharmaceutical Storage:

Hikvision's high megapixel cameras deliver more accurate video and images of key locations such as drug storage and delivery systems (i.e. Pyxis). Access control provides automatic credential verification for entryways and improved security verification for restricted locations.

### 02 Nurse Station:

Improve accountability and security response times for patient observation with immediate alerts sent to a PC, tablet or smartphone with Hikvision's CMS, HikCentral. Maximize staff efficiency to accommodate limited budgets.

### 03 Memory Care Areas:

Access control and facial recognition allow memory care residents freedom of movement and interaction while preventing dangerous and costly elopement for the facility.

### 04 Hallway/Stairwell Tracking:

Hikvision's discreet mini dome cameras feature 90-degree rotation mode for vertical perspective, and ColorVu for full color images around the clock, capturing human activity and limiting wall coverage even in darkness.

### 05 Parking Lot/Garage:

Hikvision's DarkFighter technology produces superior images in low light with fewer cameras. License Plate Recognition cameras identify and monitor vehicles as they enter and exit the parking garage.

### 06 Entrance/Exit:

TurboHD cameras offer affordable and accurate monitoring of people and assets. Deep learning with access control on our Facial Recognition Terminal supplements or replaces physical credentials. Simple face capture creates a database to easily match persons entering or exiting the facility.

### 07 Perimeter Video:

Hikvision's dual-lens face recognition camera hosts a deep learning algorithm and powerful GPU for instant face image capture and database comparison, with real-time alarm triggering. AcuSense delivers cost-effective perimeter detection by accurately sensing human and vehicle movement, reducing false alarms.



**ACCESS CONTROL:** Scalable solutions include various card readers and technologies, including fingerprint access and facial recognition.

**LPR (LICENSE PLATE RECOGNITION) CAMERA:** Move traffic quickly and easily past parking gates with LPR cameras that capture plate numbers, even in the most challenging lighting conditions.

**PanoVu PANORAMIC CAMERA:** Seamlessly capture panoramic views in large areas even with poor lighting. Multiple analytics and audio exception alerts make this an ideal choice for surveillance of parking structures.

**TurboHD™ (HD OVER COAX) SOLUTIONS:** Upgrade existing analog systems to ultra-high definition cameras without the cost of replacing existing coax cables. Provides cost savings over typical migration to IP.

**DarkFighter™ APPLICATION:** DarkFighter cameras provide high quality images in extreme low light conditions for indoor and outdoor environments.

**FACIAL RECOGNITION:** Highly accurate facial recognition quickly identifies nurses and caregivers, allowing for freedom of movement while keeping residents safe.

**HEALTHCARE-CENTRIC ANALYTICS:** On-board analytics such as line crossing detection provides an alert if a designated area has been accessed.

## FEATURED PRODUCTS

### Access Control



### LPR Camera



### PanoVu Panoramic Camera



### DarkFighter™



### Facial Recognition



### Healthcare-Centric Analytics





# Reduce Costs with Hikvision Technology

## DEPLOY SECURITY TECHNOLOGY ON A BUDGET:

Our price advantages allow you to improve security and meet budget requirements. Providing this level of savings coupled with Hikvision's less than one percent technology failure rate ensures buildings operate efficiently, safely, and on budget.

## H.265+ COMPRESSION:

A revolutionary video compression algorithm that reduces video bitrate streaming 60 to 80 percent over the current H.265 industry standard. H.265+ greatly reduces network bandwidth usage and lowers storage requirements, leading to significant cost savings, and enabling long-term video storage to comply with regulations and reduce risk.

## TurboHD™ (HD OVER COAX) SOLUTIONS:

Hikvision's TurboHD TVI (HD over Coax) solution saves money by using the existing coaxial cable infrastructure to transmit high definition video. This allows buildings to upgrade to high quality HD security equipment at a fraction of the cost of equivalent IP video systems.

## DEEP LEARNING ANALYTICS:

Advanced video analytics are included in certain Hikvision cameras and recorders without additional fees. These advanced algorithms improve accuracy in detection and reduce false alarms, enabling staff to focus on residents. Deep Learning technology is the latest innovation in VCA (video content analytics) that works hand-in-hand with today's high-speed processors (GPUs) to expand image recognition types and capability while improving accuracy.

The image shows a close-up of a glass door or window. The Hikvision logo is prominently displayed in the upper half, with 'HIK' in red and 'VISION' in grey. Below the logo, the text 'SOURCE CODE TRANSPARENCY CENTER' is visible in a smaller, black font. The background is slightly blurred, showing an office interior.

SOURCE CODE TRANSPARENCY CENTER

Committed to the utmost quality and safety of its products, Hikvision encourages partners to take advantage of the many cybersecurity resources we offer including the online Hikvision Cybersecurity Center. In 2018, Hikvision opened the industry's first Source Code Transparency Center (SCTC) in California. The facility is accessible to U.S. and Canadian government and law enforcement agencies to review the source code for cameras and recorders currently sold in North America.

**Hikvision USA Inc.**  
18639 Railroad Street  
City of Industry, CA 91748

**Hikvision Canada Inc.**  
4848 Levy Street  
Saint-Laurent, Quebec H4R 2P1

**Cybersecurity Hotline**  
Toll-free: +1-866-200-6690, press option 5  
Phone: +1-626-723-2100

**Contact Information**

Toll-Free: +1 866-200-6690 (U.S. and Canada)  
Phone: +1 909-895-0400  
Email: [verticals.usa@hikvision.com](mailto:verticals.usa@hikvision.com)

[hikvision.com](http://hikvision.com)

**Tech Support**

Toll-free: +1-866-200-6690, press option 1  
U.S. Email: [techsupport.usa@hikvision.com](mailto:techsupport.usa@hikvision.com)  
Canada Email: [techsupport.ca@hikvision.com](mailto:techsupport.ca@hikvision.com)

Connect with us:     