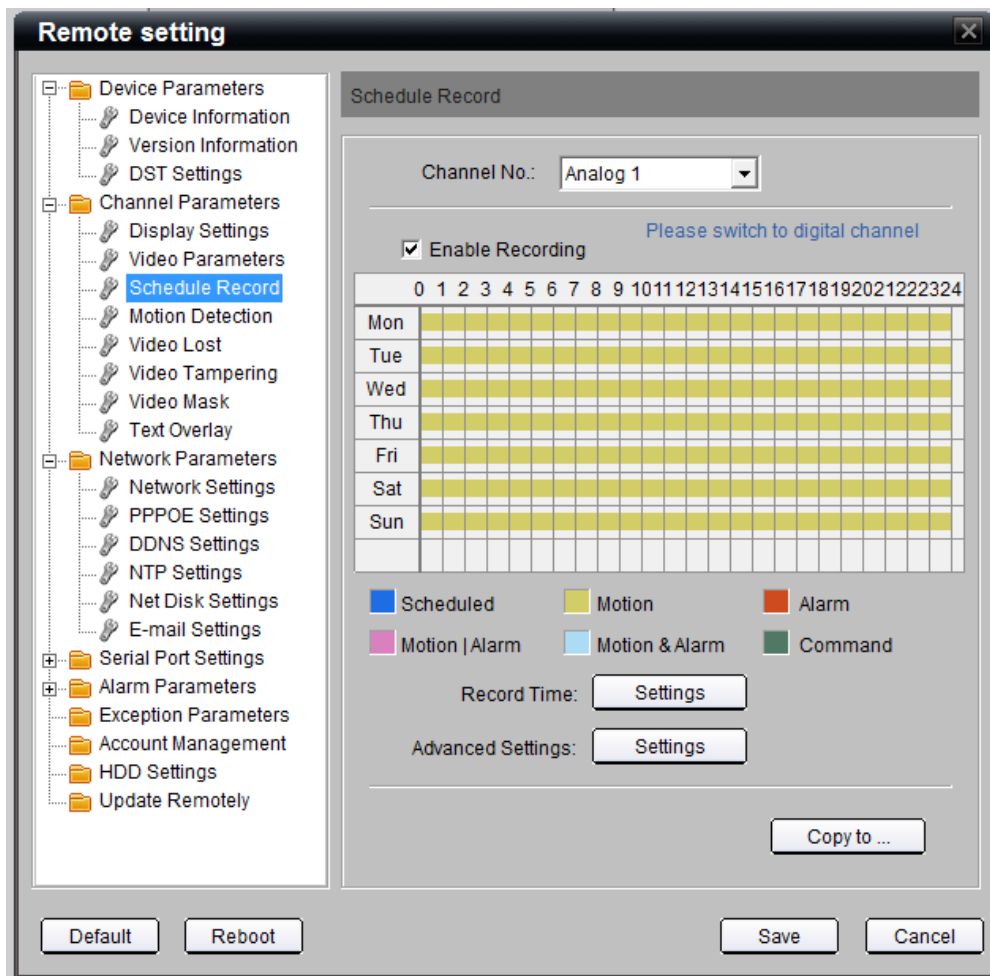


Title:	How to set up Motion Detection				
Date:	9/13/2011	Version:	1.0	Pages	3
Product:	HIKvision DVR's, NVR's and Hybrid's				
Action Required:	Information Only				

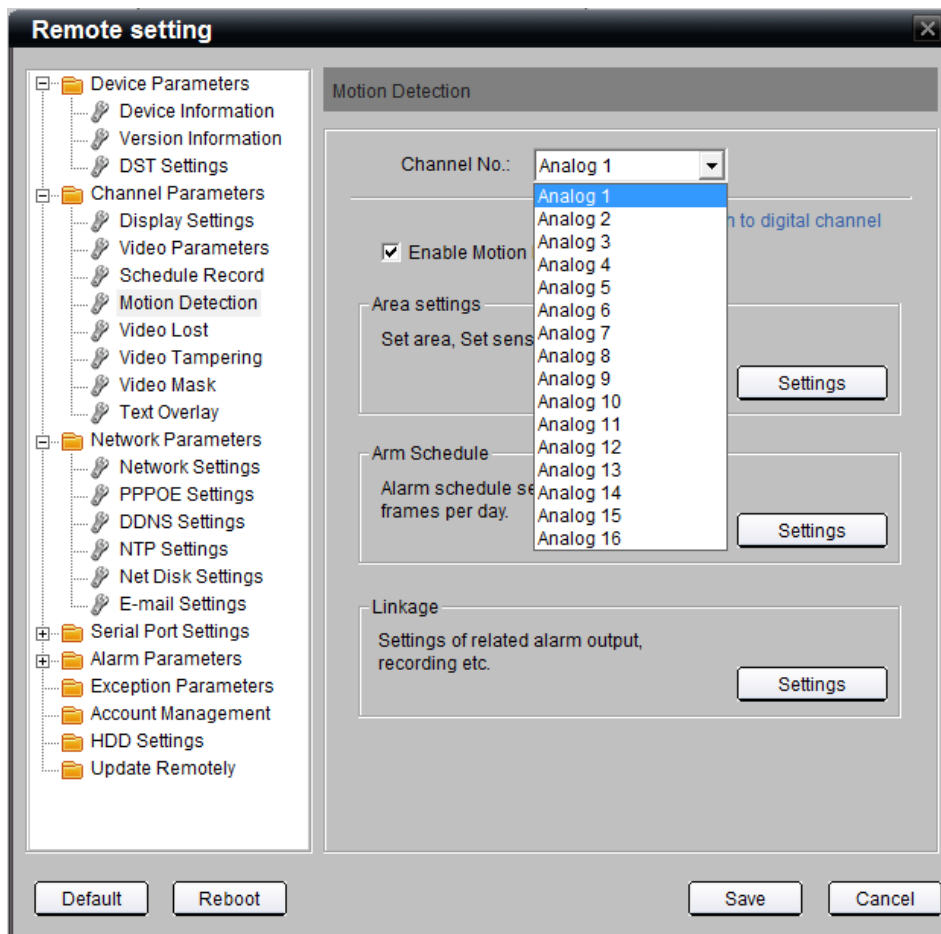
1. Click on the setup tab
2. Right click on the DVR title
3. Select remote settings
4. Click "Schedule Record"
5. Place checkmark in "Enable Recording"
6. Click on Settings button next to "Record Time"
7. Select the appropriate day from the drop down list
8. Place check mark in "All Day Recording" box
9. Select "Motion Detection" from top drop down list
10. To apply to the whole week , select "Whole Week" from the "Copy To" menu and click Copy
11. In the Schedule Record screen, the color will be yellow



12. Click the Copy To button and select the channels you wish to have the same schedule.
13. Click OK and Save

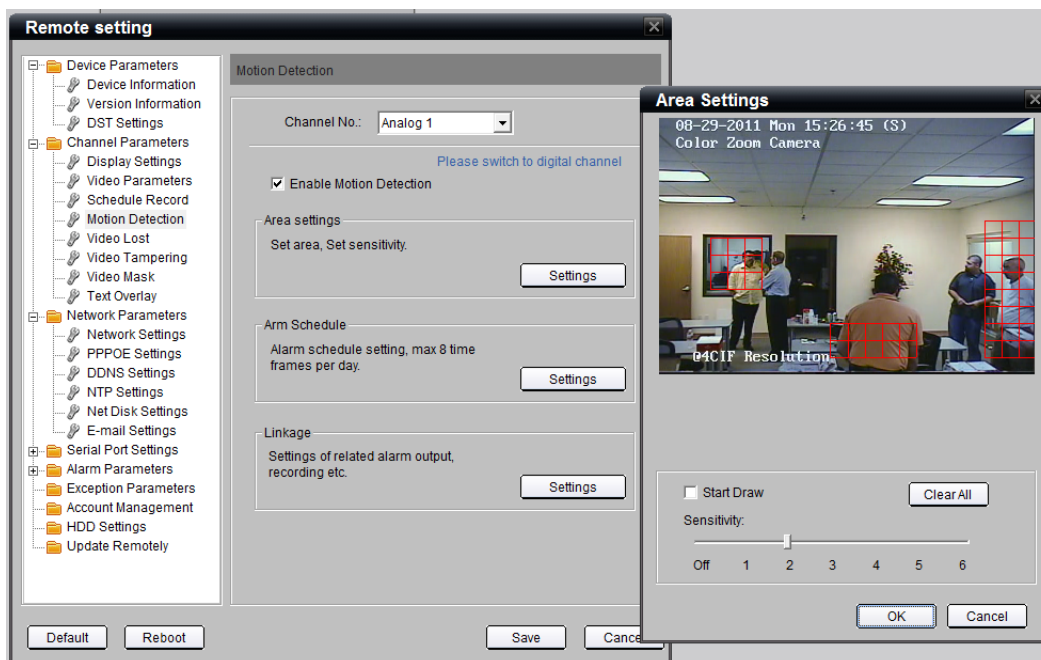
Title:	How to set up Motion Detection				
Date:	9/13/2011	Version:	1.0	Pages	3
Product:	HIKvision DVR's, NVR's and Hybrid's				
Action Required:	Information Only				

14. In the Motion Detection Settings of the DVR/NVR, use the drop down box at the top to select the channel you wish to enable Motion Detection on.



Title:	How to set up Motion Detection				
Date:	9/13/2011	Version:	1.0	Pages	3
Product:	HIKvision DVR's, NVR's and Hybrid's				
Action Required:	Information Only				

15. Next to Area Settings, click the settings button



16. Place check mark in the Start Draw box
17. Click and drag in the preview window to draw a grid for motion detection
18. Select your sensitivity from the slider bar (6 being the most sensitive)
19. Click ok and repeat the steps for all other necessary channels