



Performance Series Thermal Cameras

# Thermal Technology Made Affordable

Hikvision Performance Series Thermal Cameras make advanced thermal imaging features affordable, including thermal imaging-based fire detection, temperature monitoring and DeepinView thermal intrusion detection.

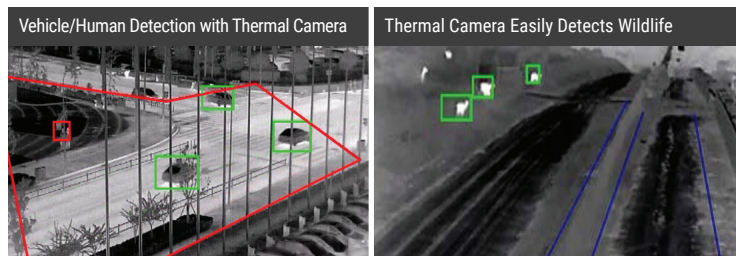
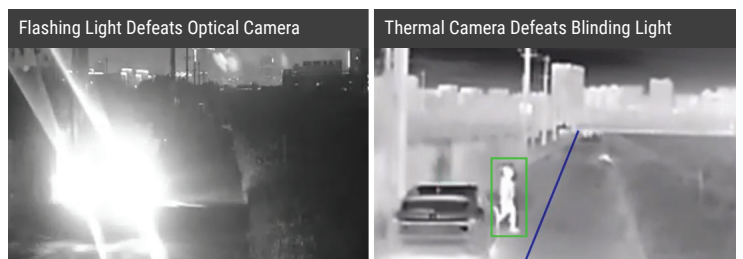
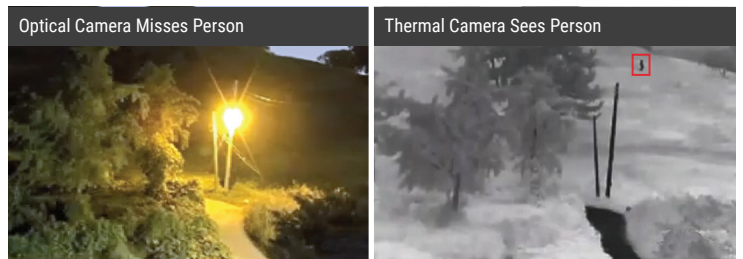
Thermal video is effective in daylight, complete darkness, rain, fog, smoke, and with dazzling light and moving shadows. Security guards can easily spot warmer and cooler objects in contrast to surroundings.

DeepinView technology distinguishes humans and vehicles from other objects moving in or out of specified areas. Thermal imaging makes the technology more effective, and significantly reduces false alarms.

The bi-spectrum thermal-optical models also provide Full HD color video with IR illumination, combining the best detection and identification capabilities.

## Key Performance Thermal Benefits:

- Superior Visibility and Image Stability
- Outstanding Intrusion Detection
- Prevent Equipment Failure with Temperature Monitoring
- Prevent Fires Before They Start with Temperature Monitoring and Advanced Fire Detection
- Reliable Alarms and Video Verification
- Enable Efficient Allocation of Security Staff
- Improve ROI with Disaster Avoidance, Reduced False Alarms and/or Predictive Maintenance



## Advanced Features

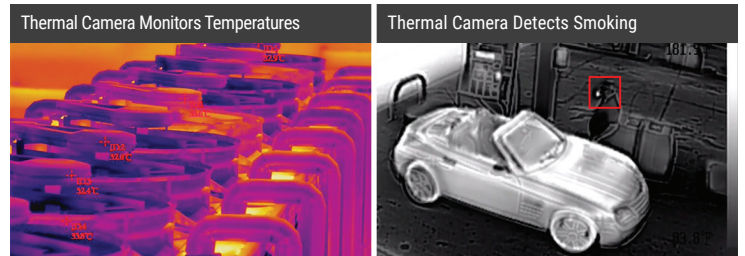
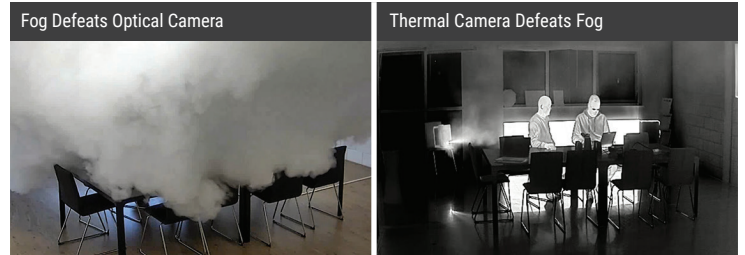
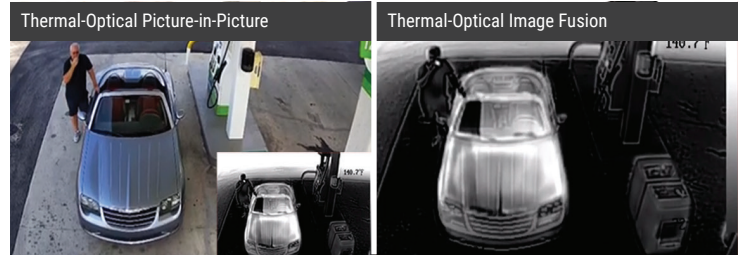
**Bi-Spectrum Picture-in-Picture:** Get the most thermal and optical spectra information in a single window or monitor using the picture-in-picture feature.




**Bi-Spectrum Image Fusion:** Fusion of thermal and optical video adds more visual context to thermal imagery.

**Fire Detection:** Thermal fire detection cameras detect and locate fires sooner, at greater distances, and over larger areas than other detectors.

**Temperature Measurement:** Pre-alarm and alarm thresholds can be set for rising or falling temperatures. Early warning of problems enables timely human or automated intervention before disaster occurs.

**DeepinView Thermal Perimeter Protection:** Improving upon high quality thermal imaging, Hikvision has added DeepinView human and vehicle detection technology, making these cameras ideal for short-range perimeter protection with reduced false alarms.



|                         |   |  |  |
|-------------------------|---|--|--|
| <b>Available Models</b> |  |  |   |
| <b>Model</b>            | <b>Thermal Bullet</b><br>DS-2TD2117-3/V1<br>DS-2TD2117-6/V1                         | <b>Thermal-Optical Bullet</b><br>DS-2TD2617-3/V1<br>DS-2TD2617-6/V1                  | <b>Thermal-Optical Turret</b><br>DS-2TD1217-2/V1<br>DS-2TD1217-3/V1<br>DS-2TD1217-6/V1 |
| <b>Brackets</b>         | CB130, PM, CM   | CB130, PM, CM  | CB135, PC140, WMS, PM, CM, CPM   |

| Module         | Sensor   | Frame Rate | Lens     | Min. Illumination  | Smart Alarms  | Enhancements  |
|----------------|--|------------|----------|--|---|---|
| <b>Thermal</b> | 160×120,<br>17 μm pitch, VOx<br>UFPA, NETD < 40 mK | 25 fps     | 2/3/6 mm | ---  | Temperature, Fire,<br>Human, Vehicle,<br>Line Cross, Intrusion,<br>Region Exit/Entrance,<br>Sound | 320×240 Upscaling,<br>Adaptive AGC, Digital<br>Detail Enhancement,<br>3D DNR, 15 Palettes |
| <b>Optical</b> | 1920×1080,<br>1/2.7" CMOS                          | 30 fps     | 2/4/6 mm | 0.002 lux (color)<br>0.001 lux (B/W)<br>0 lux with IR on | Motion  | Thermal-Optical Image<br>Fusion, Picture-In-<br>Picture, AGC, True<br>WDR, 3D DNR         |