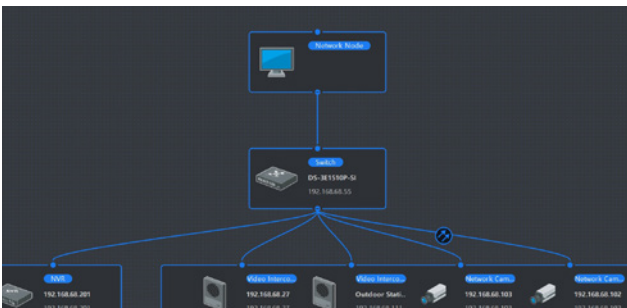




Hikvision EI Smart Managed Switches: Troubleshooting Made Simple

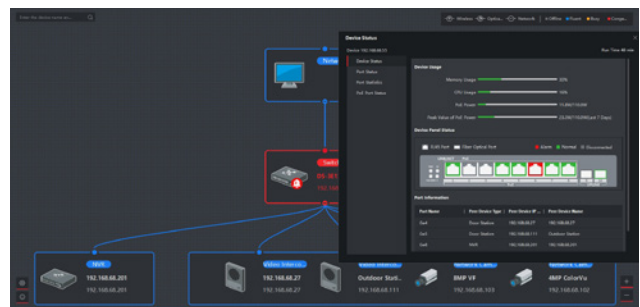
Hikvision's EI Smart Managed Switches are easy to manage, monitor and maintain. Simple to deploy and designed to allow you to expand your surveillance system anytime and anywhere with our software platforms, Smart Switches are available in 4, 8, 16 or 24 × 100 Mbps PoE ports for flexibility and scalability.

Key Features



Visual Topology Management:

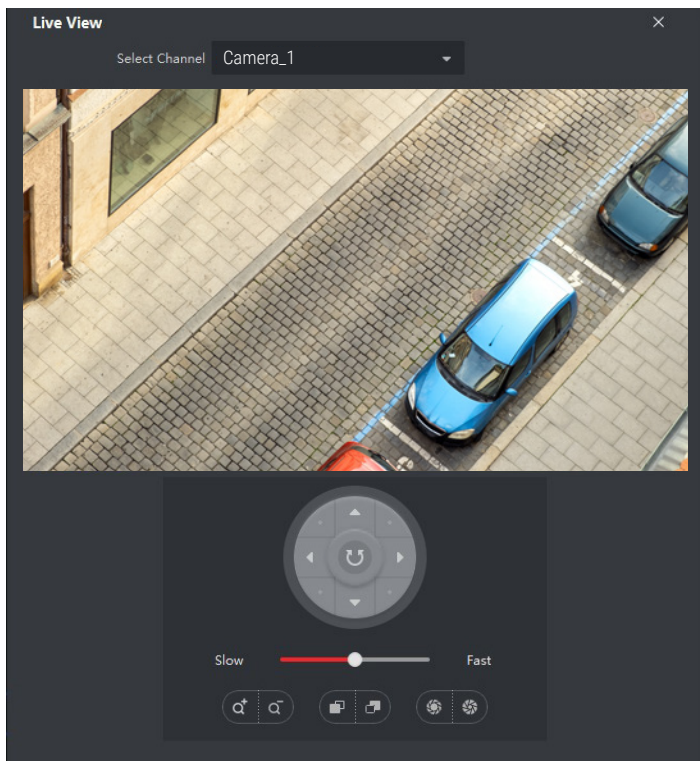
This unique 2D visual layout displays all the devices connected to a particular switch. It enables a bird's-eye view of your entire network, making it easier to build and maintain. Visual Topology management is compatible with iVMS-4200 and HikCentral.



Real-Time Alarm:

Greatly reduces the cost of network operation and maintenance by providing these alerts.

- Displays alarm notification if network bandwidth exceeds the threshold.
- Camera tile will turn red when it's disconnected, providing a visual notification.



Video Live View and Control:

Live view can be generated when a Hikvision IP camera is connected to the smart managed switch, enabling users to quickly identify a camera in need of maintenance. PTZ control is also available when viewing a Hikvision IP PTZ camera.

Port Name	Number of ...	Number of ...	Number of ...	Number of ...	Sending Rate	Re
Ge1	30,755,706	441,686	1,455,865,527	1,058,640	194.346Kbps	0.5
Ge2
Ge3
Ge4	3,726,613	20,566	277,183	634	32.861Kbps	0.6
Ge5	3,855,923	22,442	522,082	4,027	33.682Kbps	1.4
Ge6	24,827,465	348,972	1,249,172,854	957,889	163.232Kbps	6.1
Ge7	3,859,573	21,649	727,045	1,971	32.096Kbps	2.3
Ge8	3,413,392,843	2,726,887	69,058,249	1,063,489	16.663Mbps	4.2
Ge9
Ge10	17,667,495	162,322	340,327,505	327,336	172.759Kbps	3.4

Network Health Monitor:

Users can view the real-time bandwidth of the network and device details at both ends.

Hikvision's EI Smart Managed Switches come in 4, 8, 16 and 24 ports configuration to help you scale your security system and network infrastructure.

	DS-3E1105P-EI	DS-3E1309P-EI	DS-3E1318P-EI	DS-3E1326P-EI
				
PORT	4 x 100 Mbps PoE ports, 1 x 100 Mbps uplink	8 x 100 Mbps PoE ports, 1 x 100 Mbps uplink	16 x 100 Mbps PoE ports, 2 x 1000 Mbps combo uplink	24 x 100 Mbps PoE ports, 2 x 1000 Mbps combo uplink
EXTENDED MODE PORTS	Ports 1 – 4	Ports 1 – 8	Ports 1 – 16	Ports 1 – 24
POE STANDARD	IEEE 802.3af, IEEE 802.3at	IEEE 802.3af, IEEE 802.3at	IEEE 802.3af, IEEE 802.3at	IEEE 802.3af, IEEE 802.3at
POE PORTS	Ports 1 – 4	Ports 1 – 8	Ports 1 – 16	Ports 1 - 24
MAX POE PORT POWER	30W			
POE BUDGET	60W	115W	230W	370W
OPERATING TEMPERATURE	0° to 40° C (32° to 104° F)		-10° to 55° C (14° to 131° F)	
POWER SUPPLY	48 VDC, 1.35 A	48 VDC, 2.5 A	100–240 VAC, 50/60Hz, maximum 2.5 A	100–240 VAC, 50/60Hz, maximum 6.5 A
POWER CONSUMPTION	65W	120W	250W	400W

FOCUSED ON YOUR SUCCESS

HIKVISION

©2021 Hikvision USA Inc. and Hikvision Canada Inc. All rights reserved. Hikvision is a registered trademark of Hikvision Digital Technology Co., Ltd. in the US, Canada and other countries. Product specifications and availability are subject to change without notice.