



HIKVISION EI SMART MANAGED SWITCHES: TROUBLESHOOTING MADE SIMPLE

Network switches are a key LAN component that allows networking hardware to gain access to both networks and the Internet. Switches also communicate with each other to improve data flow.

WHICH SWITCH IS BEST FOR YOUR BUSINESS NEEDS?

Hikvision's EI Smart Managed Switches are easy to manage, monitor and maintain. Simple to deploy and designed for easy surveillance system expansion anytime with our software platforms, Smart Switches are available in 4, 8, 16 or 24 x 100 Mbps PoE ports for flexibility and scalability.

- Reduce equipment costs with PoE Extended Mode
- Efficient network management with network health monitoring
- Minimize downtime with real-time alerts that help you keep your business running

TRADITIONAL SWITCH LIMITATIONS

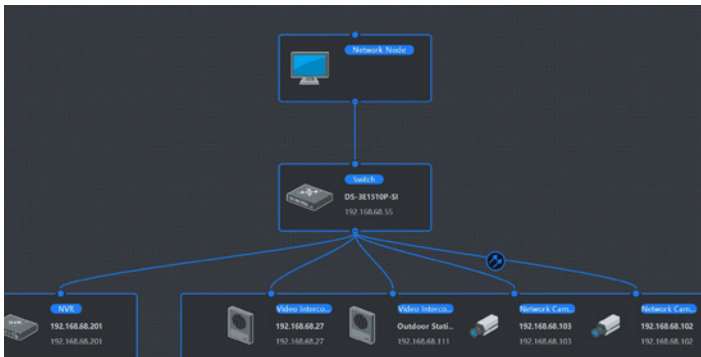
Most typical business switches are basic, unmanaged without special features or settings. These switches simply add Ethernet ports to your current network. Without monitoring or bandwidth threshold features, troubleshooting becomes time consuming and inefficient.

WHY HIKVISION'S EI SMART SWITCH?

Hikvision EI Smart Managed Switches offer unique features: (with iVMS-4200 or HikCentral)

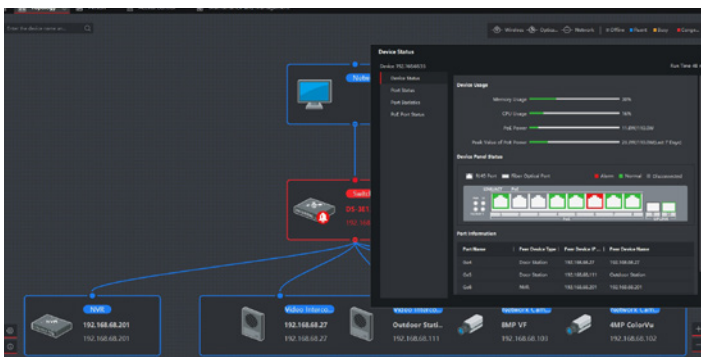
- Visualized Topology
- Network Health Monitoring
- Real-Time Alarms

These features can greatly reduce network downtime, allowing network administrators to quickly isolate an issue, making it easier to repair and maintain.



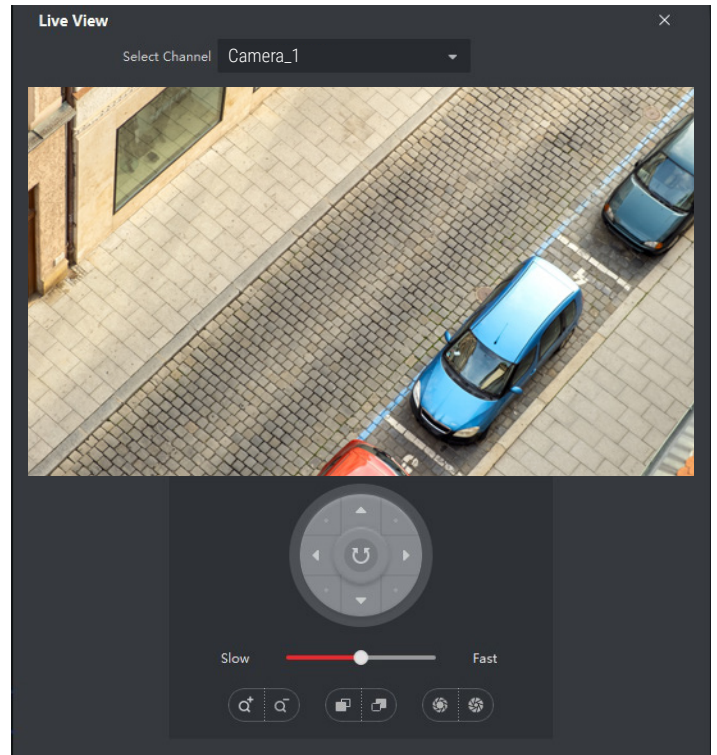
▶ Visual Topology Management:

Visual topology management provides an easy-to-read visualized 2D layout of the network devices that are connected to the smart managed switch. All compatible devices will be displayed automatically without further configuration, making it simple to read, build and maintain.



▶ Real-Time Alarm and Device Status:

The EI Smart Switch will turn red in Visualized Topology if a device is disconnected and will be displayed in the Device Alarm dashboard section. Real-Time bandwidth can also be displayed within the Visualized Topology.



▶ Video Live View and Control:

Combining network management and video management into one system for convenient operation, Video Live View can be generated when the Hikvision IP camera is connected to the smart managed switch. This feature provides users with a quick and easy way to identify cameras during maintenance. PTZ control is also available when viewing a Hikvision IP PTZ camera.

Port Name	Number of ...	Number of ...	Number of ...	Number of ...	Sending Rate	Re
Ge1	30,755,706	441,686	1,455,865,527	1,098,840	194.349Kbps	6.5
Ge2	--	--	--	--	--	--
Ge3	--	--	--	--	--	--
Ge4	3,726,613	20,566	277,183	634	32.861Kbps	0.0
Ge5	3,855,923	22,442	522,082	4,027	33.682Kbps	1.4
Ge6	24,827,465	348,972	1,249,172,854	957,889	163.232Kbps	6.1
Ge7	3,859,573	21,649	727,045	1,971	32.096Kbps	23
Ge8	3,413,392,843	2,726,887	69,058,249	1,063,489	16.663Mbps	42
Ge9	--	--	--	--	--	--
Ge10	17,667,495	162,322	340,327,505	327,336	172.755Kbps	2.6

Network Health Monitor:

Monitor the network status, view network connection details, receive notification alarms when the bandwidth exceeds the preset threshold. This enables more effective management of the network bandwidth usage.

APPLICATIONS



Education







Hotels



Hospitals



Office Buildings

	DS-3E1105P-EI	DS-3E1309P-EI	DS-3E1318P-EI	DS-3E1326P-EI
IMAGE				
PORT	4 × 100 Mbps PoE ports, 1 × 100 Mbps uplink	8 × 100 Mbps PoE ports, 1 × 100 Mbps uplink	16 × 100 Mbps PoE ports, 2 × 1000 Mbps combo uplink	24 × 100 Mbps PoE ports, 2 × 1000 Mbps combo uplink
EXTENDED MODE PORTS	Ports 1 – 4	Ports 1 – 8	Ports 1 – 16	Ports 1 – 24
POE STANDARD	IEEE 802.3af, IEEE 802.3at	IEEE 802.3af, IEEE 802.3at	IEEE 802.3af, IEEE 802.3at	IEEE 802.3af, IEEE 802.3at
POE PORTS	Ports 1 – 4	Ports 1 – 8	Ports 1 – 16	Ports 1 - 24
MAX POE PORT POWER	30W			
POE BUDGET	60W	115W	230W	370W
OPERATING TEMPERATURE	0° to 40° C (32° to 104° F)		-10° to 55° C (14° to 131° F)	
POWER SUPPLY	48 VDC, 1.35 A	48 VDC, 2.5 A	100–240 VAC, 50/60Hz, maximum 2.5 A	100–240 VAC, 50/60Hz, maximum 6.5 A
POWER CONSUMPTION	65W	120W	250W	400W
DIMENSIONS (L x H x D)	105 mm × 27.6 mm × 83.1 mm (4.76" × 3.47" × 1.09")	170 mm × 27.6 mm × 93.1 mm (4.76" × 3.47" × 1.09")	440 mm × 44 mm × 220.8 mm (4.76" × 3.47" × 1.09")	440 mm × 44 mm × 221 mm (4.76" × 3.47" × 1.09")