

How to Download & Install the Batch Configuration Tool

ver 2.0.0.2

GREAT PRODUCTS. GREATER PARTNERSHIPS.™

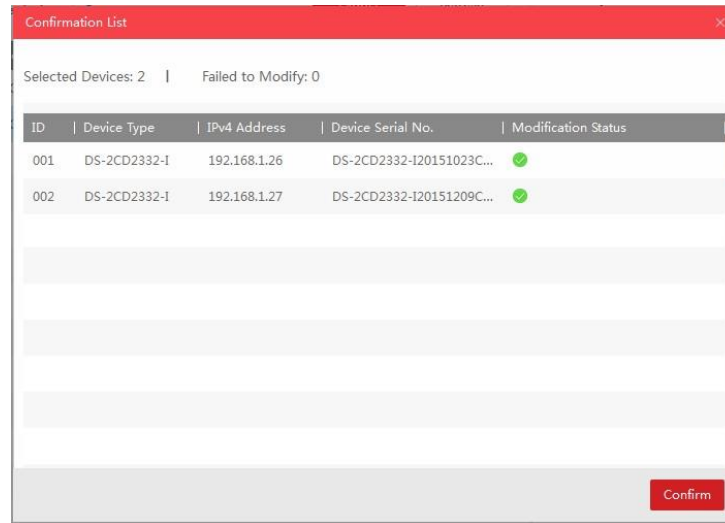
HIKVISION®

Batch Configuration Tool

Currently supported only on Windows OS

Finds only devices on same physical network as computer

Finds all Hikvision devices on the physical network, even if they are on other subnets.



Confirmation List

Selected Devices: 2 | Failed to Modify: 0

ID	Device Type	IPv4 Address	Device Serial No.	Modification Status
001	DS-2CD2332-I	192.168.1.26	DS-2CD2332-I20151023C...	✔
002	DS-2CD2332-I	192.168.1.27	DS-2CD2332-I20151209C...	✔

Confirm

The Batch Configuration Tool can:

- Batch change device network settings
 - Change IPV 4 & 6 addresses
 - Change subnet address
 - Select DHCP
 - Change port numbers

Acts much like SADP

In addition, Batch Configuration can

- Detect and upgrade device software
- Control wiper speed
- Restore device default settings

How to Download

1. Go to tech.hikvisionusa.com
2. Click on Download
3. Then Tools
4. Select Batch Configuration

Tool v2.0.0.2

[1] tech.hikvisionusa.com/firmware

CECApplication-Corpo Hikvision USA History Germanium - Wi

HIKVISION
North America Tech

Download How To

[2]

Download

ATTENTION: Tyco and ADT custom
your devices. When calling, pleas

Firmware

Tools [3]

VMS

Product Quick Guide

Tools

By downloading the software from th

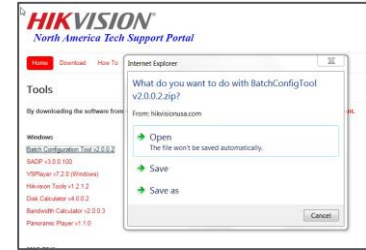
Windows

Batch Configuration Tool v2.0.0.2 [4]

SADP v3.0.0.100

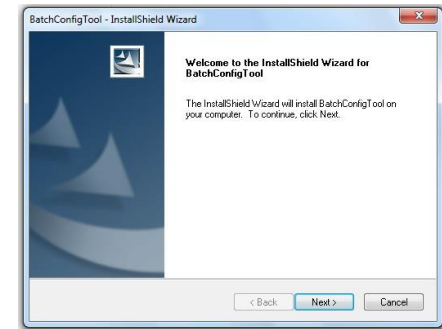
How to Download Batch Configuration

5. The Batch Configuration.zip file should download



6. Double click on File Name

7. The InstallShield Wizard should begin

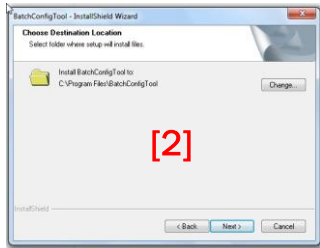


Running the Batch Configuration Installer

- Follow the steps; click Next

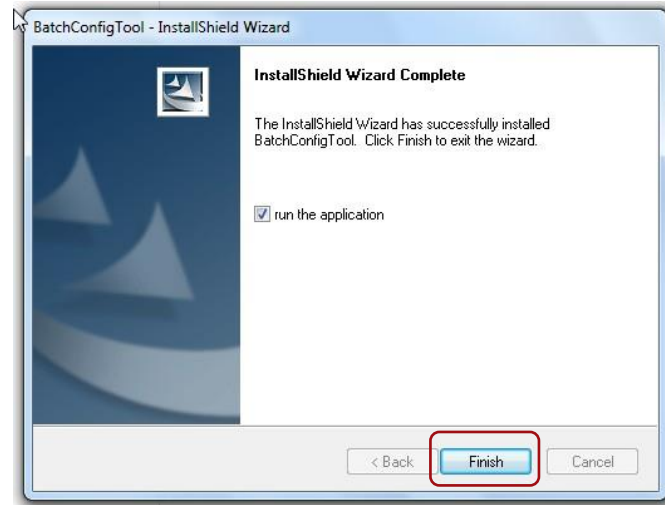


- Then choose all the default settings



Completing the Install Process

- Click Finish
- The Batch Configuration tool should open
and be ready for use
if you checked **run the application.**



Opening the Batch Configuration tool

- The Batch Configuration information screen



Batch Config.
tool icon
Double click to
open the tool.

