

QNAP NAS configuration for Hikvision camera

Recently, we receive many problems feedback about the compatibility between QNAP NAS and Hikvision IP camera, especially in Europe. Common problems are as follows:

ASK: IP camera only can be added to QNAP NAS, but QNAP NAS has channel limitation, 4 channels IP camera at most are free to be added. How to store the other cameras?

Answer: In fact, the following operations are both supported: (1) Add IP camera to NAS when customer has less than 4 cameras; (2) Add NAS to IP camera when customer has many cameras (more than 4 cameras). And the 2nd case is much common.

I will introduce QNAP NAS configuration for Hikvision camera of the above two cases separately.

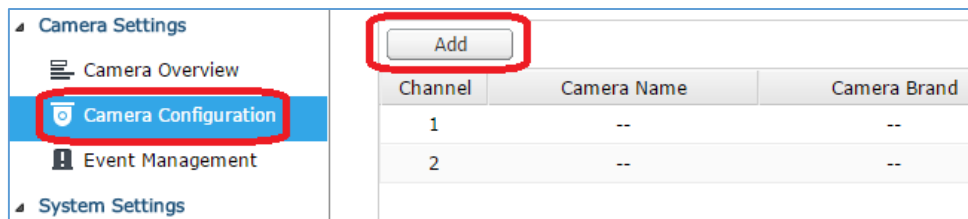
1 How to add Hikvision IPC to QNAP NAS?

Access QNAP NAS IP address via Google Chrome or Fire fox with default account (admin/admin). Download QMon.exe from <http://IP:8080/cgi-bin/QMon.exe> and install, then surveillance station is installed in NAS, so NAS contains all the function that NVR supports, including live view, playback, recording schedule, event configuration, etc.



(1) Login to surveillance station, the default user name and password: admin/admin.

Click 'Camera Configuration' to add cameras, the tested model is QNAP TS-120, only 2 free channels are available, additional channels will be charged through licenses by QNAP.



(2) Click 'Add' to configure cameras.

Camera Configuration

Channel: Channel1
Camera Brand: HikVision
Camera Model: HikVision DS-2CD2432F-I
Camera Name: 2432
IP Address: 10.18.0.201
Port: 90
RTSP Port: 2454
WAN IP Address:
Port: 90
RTSP WAN Port: 2454
User Name: admin
Password:

Test

Step 2/6 Back Next Cancel

(3)After finish camera configuration, click 'next' to set Video Settings.

Video Settings

Video Compression: H264
Resolution: 1920x1080
Frame Rate: 20
Quality: 3000 Kbps

Enable audio recording on this camera
 Enable manual recording
 Minimum number of days recording files are kept 1 day(s)
 Enable auto snapshot

(4)Click 'next' to configure recording schedules.

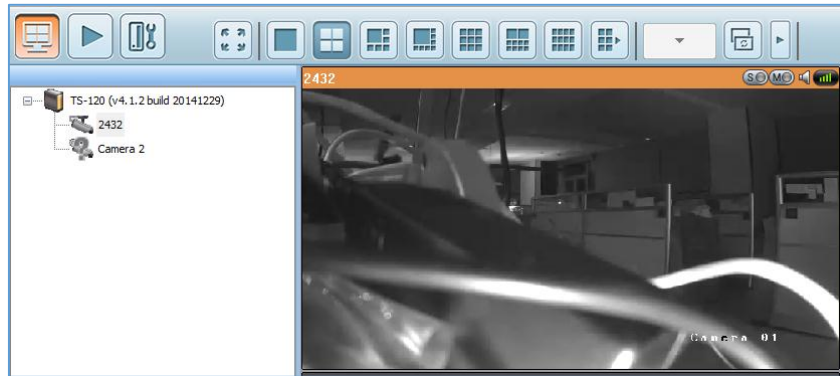
Schedule Settings

Enable schedule recording

Active: Inactive:

	0	1	2	3	4	5	6	7	8	9	10	11	12	13	14	15	16	17	18	19	20	21	22	23
Sun																								
Mon																								
Tues																								
Wed																								
Thurs																								
Fri																								
Sat																								

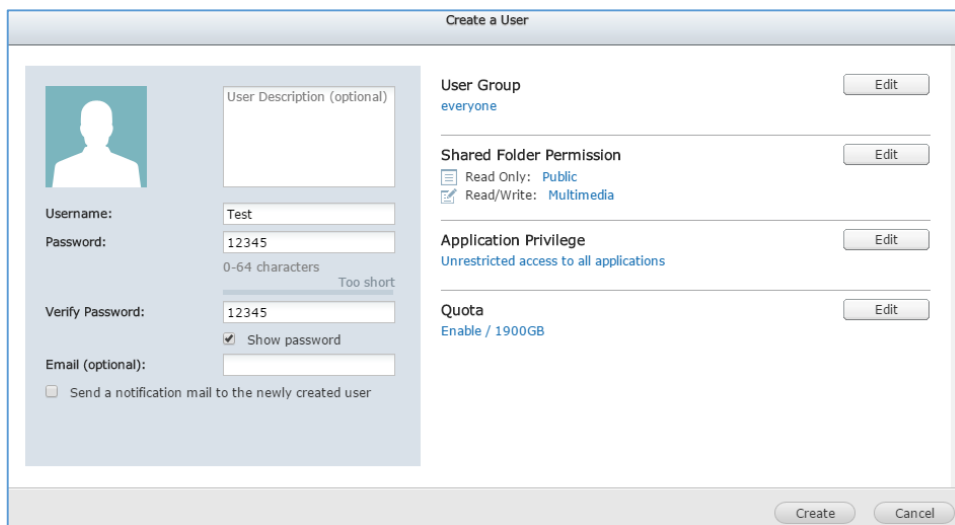
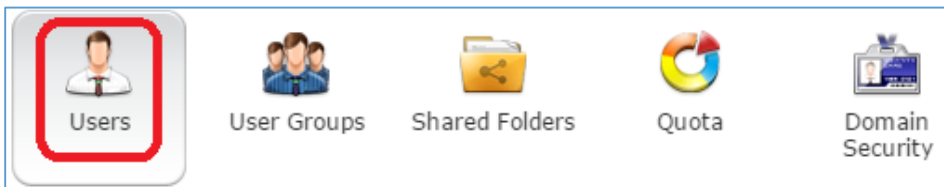
(5)Click 'Monitor' to preview.



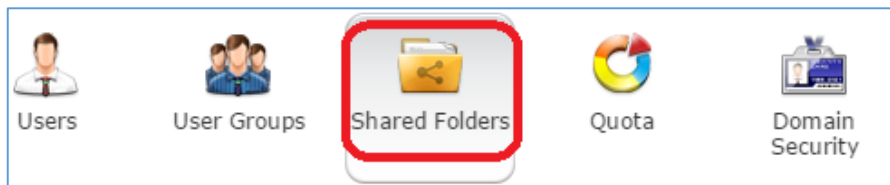
2 How to add QNAP NAS to Hikvision cameras?

(1) Add 'Users'.

Click Privilege Settings->Users->Create, Create a new user.



(2)Click 'Shared Folders'.



Click 'Create' to allocate one shared folders. The red rectangle part should be written. Above all, configure access privileges for the created users 'Test'. RW privilege should be allocated.

Create A Shared Folder

Please fill out the following fields to create a shared folder

Folder Name:

Description:

Select the disk volume on which the shared folder will be created.

Single Disk: Drive 1

Configure access privileges for users Edit

Currently, only administrators have the full permission on this folder.

Advanced Settings Edit

Configure the settings of guest access right, recycle bin, hidden folder, etc.

Create A Shared Folder

Please fill out the following fields to create a shared folder

Folder Name:

Description:

Select the disk volume on which the shared folder will be created.

Single Disk: Drive 1

Configure access privileges for users Close

User name	Preview	RO	RW	Deny
admin	Read/Write	<input type="checkbox"/>	<input checked="" type="checkbox"/>	<input type="checkbox"/>
Test2	No Access	<input type="checkbox"/>	<input type="checkbox"/>	<input type="checkbox"/>
Test	Read/Write	<input type="checkbox"/>	<input checked="" type="checkbox"/>	<input type="checkbox"/>

Shared Folder Properties

Network share name: Test

Comment (optional):

Disk Volume: Single Disk: Drive 1

Path:

Hide network drive

Lock File (Oplocks)

Enable Network Recycle Bin

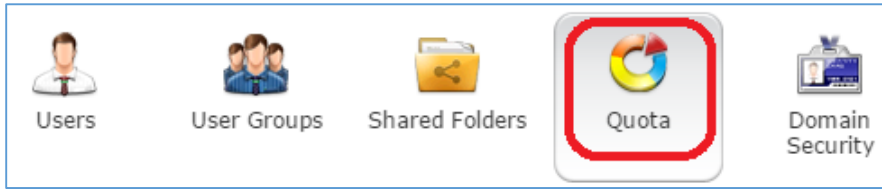
Restrict the access of Recycle Bin to administrators only for now.

Enable write-only access on FTP connection

Only allows applications to access files using the long file name format.

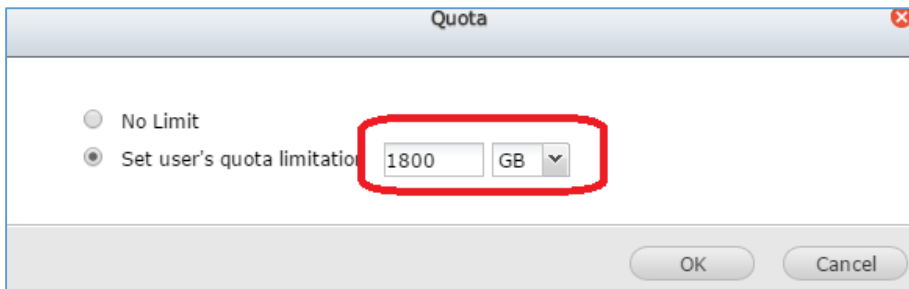
OK Cancel

(3)Click 'Quota' to allocate quota limitation for the created user.



Users	Quota Size	Used size	Status
admin	No Limit	--	--
Test2	1900 GB	3.647 GB	Available 1896.353 GB
Test	1800 GB	0 MB	Available 1800 GB
guest	19 GB	0 MB	Available 19 GB

Click Edit, set user's quota limitation, and quota size should not exceed total size of HDD.

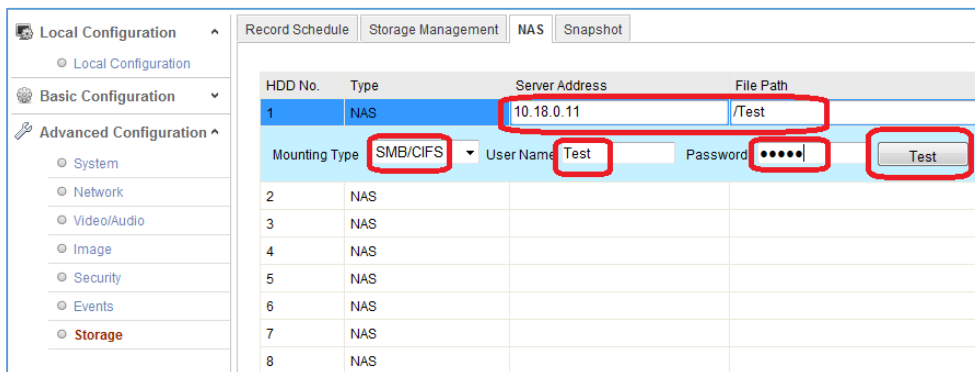


You can check the HDD size by clicking System settings->Storage Manager.

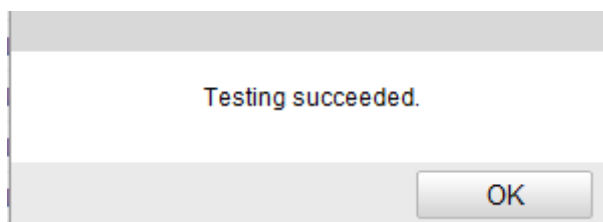
Disk	Model	Capacity	Status	SMART Information
Drive 1	Seagate ST2000DM001-1CH1CC27	1863.02 GB	Ready	Good

Disk / Volume	File System	Total Size	Free Size	Status
Single Disk: Drive 1	EXT4	1832.31 GB	1769.94 GB	Ready

(4)After finish configuration in NAS, login to Hikvision camera, add NAS into it as the following steps.



Click 'Test', when 'Testing succeeded', click 'Save'.



At last, format NAS, when status become 'Normal', IP camera storage function will work well with

QNAP NAS.

Record Schedule | **Storage Management** | NAS | Snapshot

HDD Device List Format

<input checked="" type="checkbox"/>	HDD No.	Capacity	Free space	Status	Type	Property	Progress
<input checked="" type="checkbox"/>	g	1832.31GB	0.00GB	Uninitialized	NAS	R/W	

HDD Device List Format

<input checked="" type="checkbox"/>	HDD No.	Capacity	Free space	Status	Type	Property	Progress
<input checked="" type="checkbox"/>	g	1832.31GB	0.00GB	Uninitialized	NAS	R/W	25%

Record Schedule | **Storage Management** | NAS | Snapshot

HDD Device List Format

<input type="checkbox"/>	HDD No.	Capacity	Free space	Status	Type	Property	Progress
<input type="checkbox"/>	g	1832.31GB	1759.25GB	Normal	NAS	R/W	

Record Schedule | **Storage Management** | NAS | Snapshot

HDD Device List Format

<input type="checkbox"/>	HDD No.	Capacity	Free space	Status	Type	Property	Progress
<input type="checkbox"/>	g	1832.31GB	1759.25GB	Normal	NAS	R/W	

Note: quota limitation can't be set 'No limit', otherwise, even though HDD is format successfully, the status will change to be uninitialized. The following snapshot is sent by customer.

Record Schedule | **Storage Management** | NAS | Snapshot

HDD Device List Format

<input type="checkbox"/>	HDD No.	Capacity	Free space	Status	Type	Property	Progress
<input type="checkbox"/>	1	29.51GB	19.25GB	Normal	Local	R/W	
<input type="checkbox"/>	9	3619.23GB	0.00GB	Uninitialized	NAS	R/W	

Quota

Max. Picture Capacity:

Free Size for Picture:

Max. Record Capacity:

Free Size for Record:

Percentage of Picture: %

Percentage of Record: %

Save