



A SAFE HARBOR  
IN AN OCEAN OF THREATS  
SMART PORT & MARITIME SOLUTION

 smart solution **2.0**

# A WORLDWIDE LEADER

## FOCUSED ON EXCELLENCE IN SECURITY SYSTEMS

Hikvision is the world's leading supplier of video surveillance products and solutions. Featuring the industry's strongest R&D workforce, Hikvision uses its state-of-the-art manufacturing facilities to design and develop innovative CCTV and video surveillance products.

Hikvision's complete product suite includes Smart IP cameras, HD analog cameras, speed domes, NVRs, hybrid and standalone DVRs, video management software, access control and alarm systems, encoders, decoders, digital video servers, and other elements of sophisticated security systems and CCTV technology for any security need. Hikvision products serve a diverse set of vertical markets including retail, banking and finance, transportation, education, commercial, government, residential applications, and more.

### HIKVISION AT A GLANCE

Established in <b>2001</b>	US\$ <b>3.88</b> billion sales revenue in 2015, with growth rate of <b>47%</b>	<b>7-8%</b> of annual revenue invested in research & development (R&D)
<b>53%</b> compound average growth rate from 2004 to 2015	Over <b>350</b> technology partners Products sold in over <b>150</b> countries	<b>17,000</b> employees, including <b>7,000</b> engineers

### RAPID GROWTH

The Hikvision brand is renowned across the globe. IHS Inc.'s 2016 report affirmed that Hikvision is the largest worldwide supplier of CCTV and video surveillance equipment, for 5th consecutive year; and the No. 1 position in almost every individual equipment category.

Market Shares (by IHS Research)						
Category	CCTV & Video Surveillance Equipment	Security Cameras	Analogue +HD CCTV Security Cameras	Network Security Cameras	Video Encoders	Total Recorders
Rank	<b>1. Hikvision</b>	<b>1. Hikvision</b>	<b>1. Hikvision</b>	<b>1. Hikvision</b>	<b>1. Hikvision</b>	<b>1. Hikvision</b>
Market share	19.50%	23.20%	19.90%	25.30%	14.70%	20.10%



## A GLOBAL BRAND WITH A LOCAL PRESENCE

The customer comes first at Hikvision. Long-lasting partnerships are fostered as Hikvision works with its customers to identify their needs and provide solutions that support their success. Hikvision continues to expand into new areas and markets and currently has 21 regional offices in countries around the world. 65% of Employees in Hikvision's International Business Department are locals working in their native regions. Hikvision's support team of regional sales managers, sales engineers, and technical service personnel all share the same goal of helping customers with their individual needs.



## EXPLORE VERTICAL SOLUTIONS TOGETHER WITH HIKVISION

As a solution partner with the world's largest CCTV equipment provider, you will enjoy:

- Platform/software integration support
- Extensive customization support
- Local support by Hikvision overseas subsidiaries
- Technical project support from Hikvision's R&D
- Possibilities for co-marketing cooperation
- New product/solution introduction
- New product demo support
- Yearly site visit for technology/product exchange
- Information Sharing via Solution Partner Platform



## SMART SOLUTION FOR PORT & MARITIME

The importance of security in seafaring trades is matched only by its urgent vulnerabilities. And with the number of seaport shipments annually extending well into the millions, only a small fraction are individually inspected. Hikvision aims to change that.

Hikvision's Smart Port & Maritime Solution enables the early detection of security threats. Hikvision's technologically superior cameras capture even the minutest details, and in the harshest conditions. Our recording devices accurately and reliably store and replay crucial security-related information. We want to help you put into place effective plans and procedures for your crucial security needs.

Hikvision's advanced solution enables authorities to efficiently meet the requirements of the International Ship and Port Facility Security (ISPS) Code with top-tier performance. Our products arm you with the latest and highest quality surveillance, access control, and intelligence-gathering equipment. Hikvision's solution covers all your needs for monitoring the movement of personnel and cargo and for ensuring security communications with the utmost stability and reliability.

- Ensures around-the-clock perimeter safety
- Increases vehicle access management
- Protects valuable merchandise
- Records reliable footage for investigation





**VEHICLE ACCESS CONTROL**  
ANPR camera for efficient vehicle access management



**PERIMETER PROTECTION**  
Thermal imaging cameras and anti-corrosion cameras deliver long range detection and robust protection



**SECURITY CENTER**

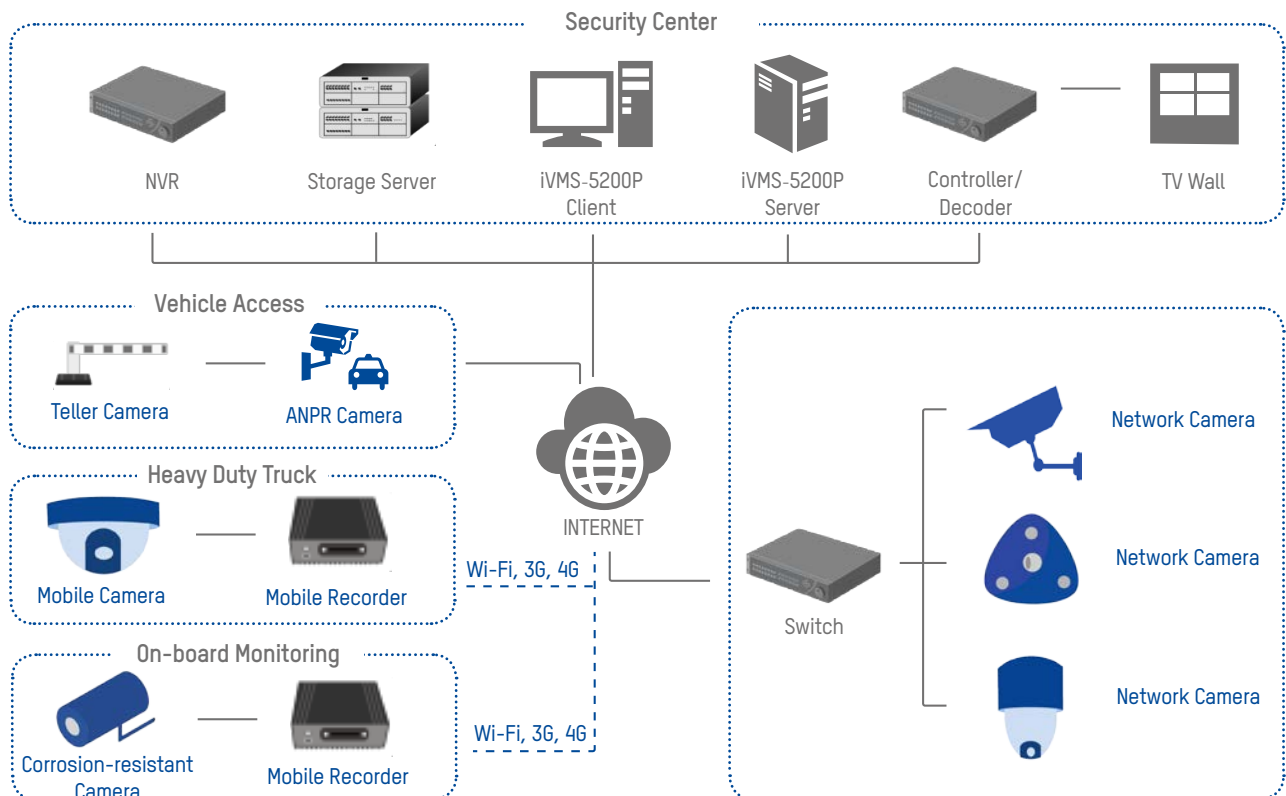
- Centralized video management platform
- Reliable redundancy for data safety
- Video wall display



**PARKING & WAREHOUSE**  
Each Darkfighter Camera in the series provides state-of-the-art low light capability



**ON-BOARD MONITORING**  
On-board IP systems provide high quality, vibration-resistant and weather-protected monitoring for all kinds of transports





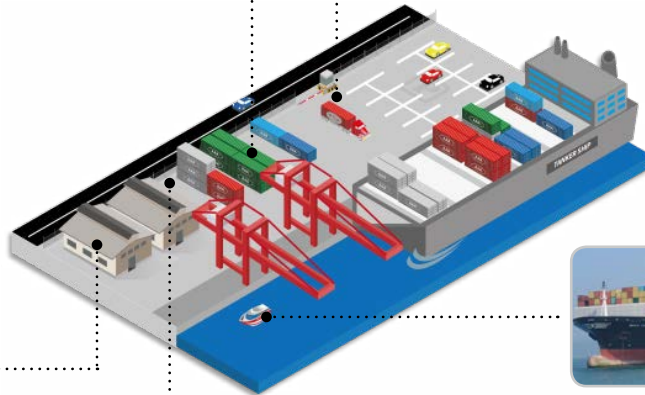
### Parking & Warehouse

- Excellent imaging in low-light conditions
- Single wide angle lens monitoring covers entire areas



### Vehicle Access Control

ANPR for Vehicle event recording and entrance automation



### On-Board Monitoring

Varied systems for a diversity of vehicles such as heavy duty trucks, container tankers, and coast guard vessels



### Security Center

- System reliability
- Data safety
- Prompt event response



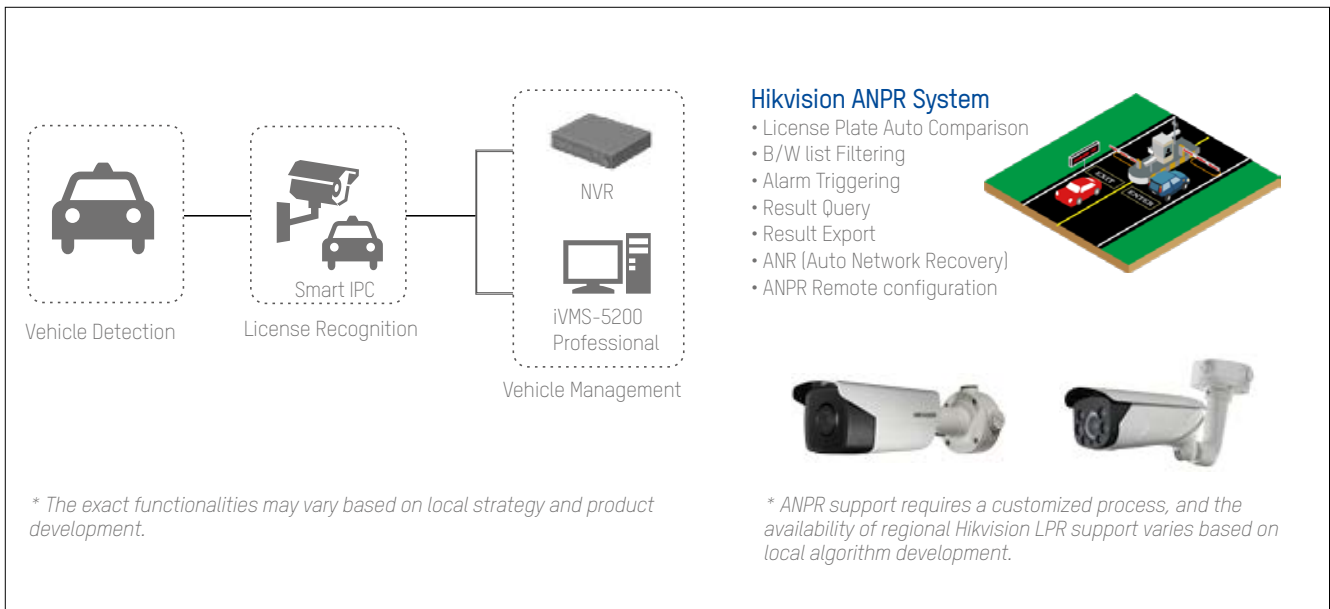
### Perimeter Protection

Durable cameras resist corrosion and provide long range detection of unauthorized objects

## VEHICLE ACCESS CONTROL

Hikvision Vehicle Access system combines high quality ANPR cameras and back-end devices to create barrier linkage, B/W list filtering, and alarm triggering.

**ANPR Cameras:** HD video quality, weather-proof, ultra low-light capability, barrier linkage support



## PARKING AREA MONITORING

Hikvision has developed a complete product line to monitor large areas and detect suspicious targets, even in low light conditions. Additionally, the iVMS platform and LED indicators manage and display the availability of public parking.

**Panoramic Cameras:** Four innovative Darkfighter imagers can deliver panoramic views with ultra low light capability to cover entire parking areas.



<p>4 x rotated images in 1920x1080 resolution</p>	<p>Conventional camera</p>
<p>Stitching to one panoramic image in (4096x1800) resolution</p>	<p>Hikvision DarkFighter camera</p>

## PERIMETER PROTECTION

Ports are vast outdoor areas, full of valuable merchandise. Therefore, thermal imaging cameras are preferable, since these help detect intrusion at extended distances for improved security.

**Dual-Lens Thermal Camera:** One thermal imaging lens suffices for long-range detection, while a another, single Darkfighter visual imaging lens renders detailed video footage. Both work together in one camera housing.

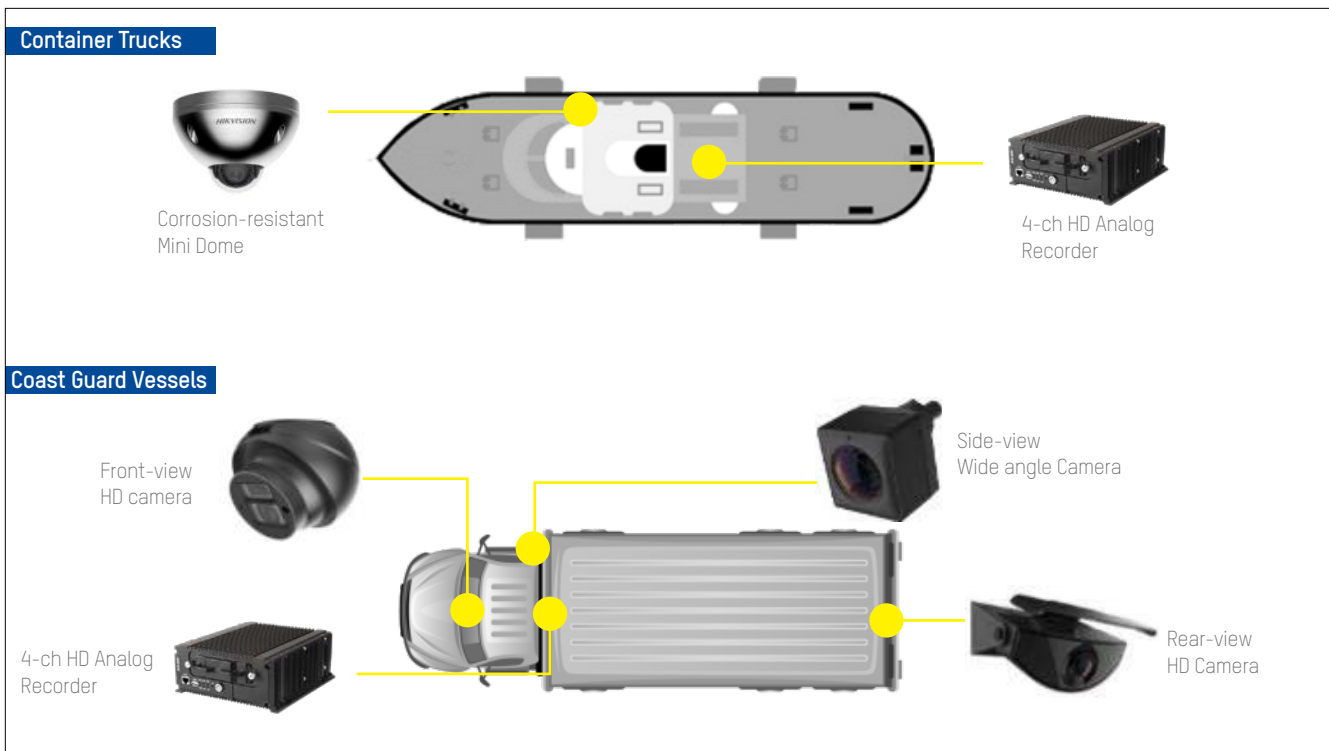


	<p>Thermal Imager</p>	<p>Visual Imager</p>

## ON-BOARD MONITORING

From Stainless Steel Darkfighter Cameras to mini vehicle cameras to vibration-resistant mobile encoders, Hikvision offers a complete line of products to meet diverse surveillance needs, including container tankers, coast guard vehicles, and heavy duty trucks.

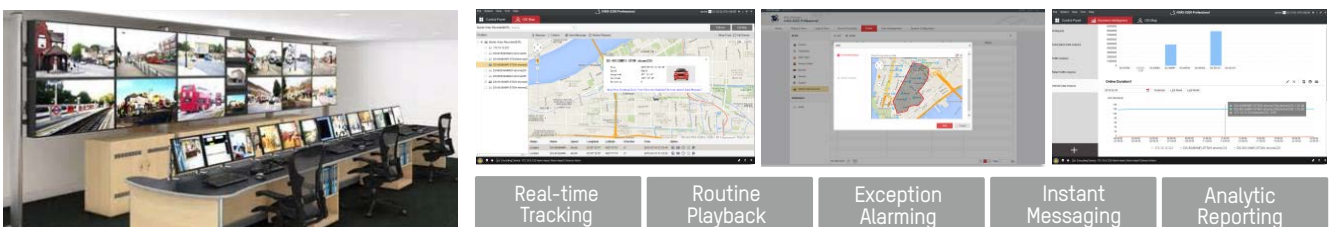
- **Container Tanker:** Darkfighter Stainless Steel cameras + mobile IP recorder
- **Coast Guard Vessels:** Stainless Steel mini dome + mobile IP recorder
- **Heavy Duty Trucks:** HD IP or HD TVI on-board system for truck tracking and incident recording



## SECURITY CENTER

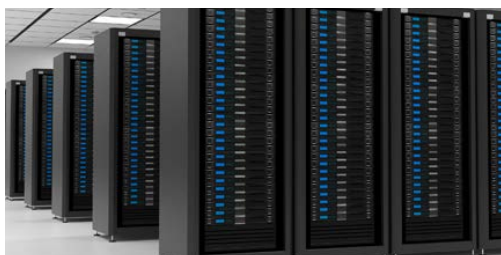
Comprising all the important video footage of daily operations, bank office's security center is a core of total CCTV system that requires utmost reliability and manageability for data protection and alarming operations.


- **Embedded NVR:** Hikvision has the richest embedded network recorder product line – from 4 channels to 256 channels – for every level of need
- **Video Management Platform:** iVMS5200P Video Platform is the CCTV system core that manages, views, plays back, and controls all the daily operations among all devices
- **Network Storage Server:** A must-have product line for total secure data storage
- **Monitor Display System:** From standalone monitors to large TV walls, Hikvision has it all





## PORT & MARITIME




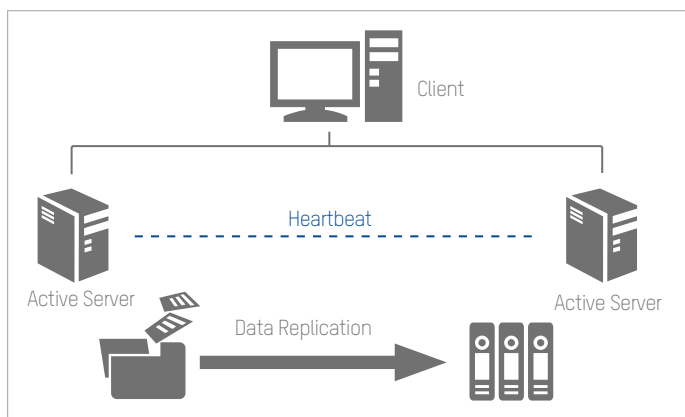
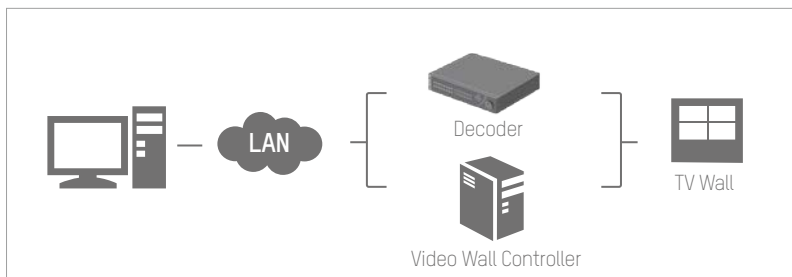


 Storage Server

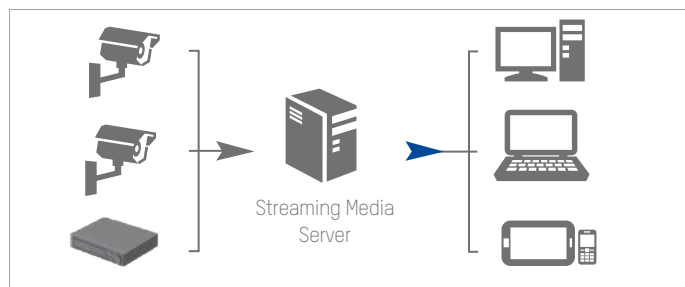
 Modularized design and hot plugging for easy maintenance

 Double controller & power module for data safety

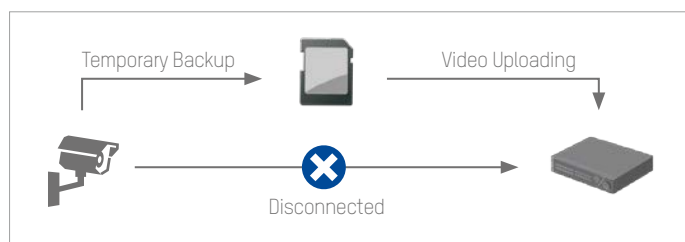
 Supports CVR mode for better return on investment



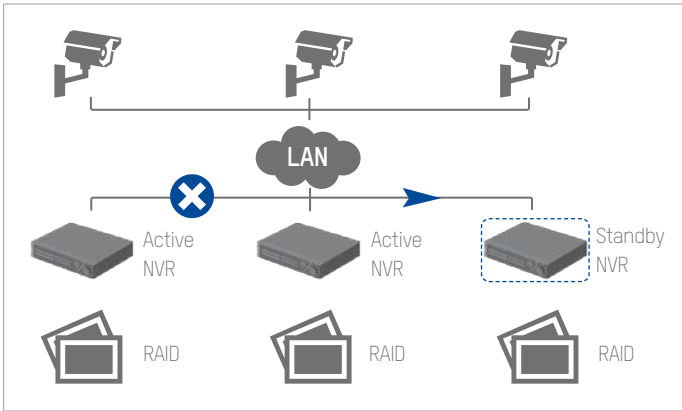
- Data Safety**  
**Server Redundancy Design**
- Active & standby servers
  - "Heartbeat" function automatically backs up users' information if one server is interrupted
  - Ensures users' live view and playback in case of failover



- Transmission Optimization**  
**Streaming Media Server**
- Hikvision Streaming Media Server enable multiple users to live view or playback the same camera with only one channel bandwidth transmission;
  - 1 Streaming Media Server supports up to 200 x 2Mbps video data streaming and up to 200 channels.



- Data Safety**  
**Auto Network Recovery (ANR)**
- Auto backup if network connection is interrupted
  - Data moves from SD card to back-end device while network connection is restored
  - We recommended using Hikvision brand Micro SD card for ANR storage



**Data Safety**  
**RAID & N+1 Failover**

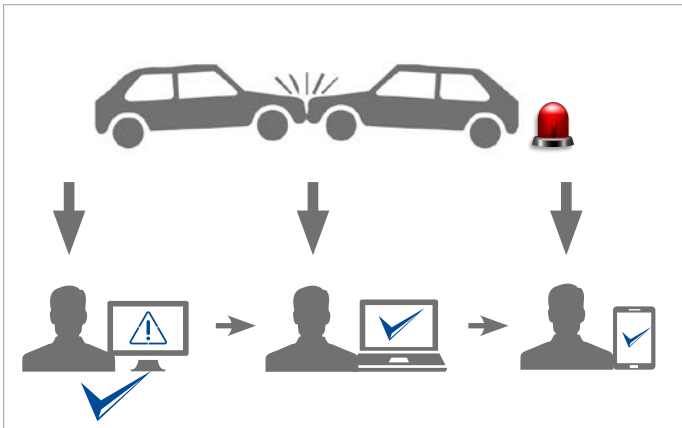


**- Single-spot storage backup:**

Multi-RAID supported by embedded NVR and Storage Server

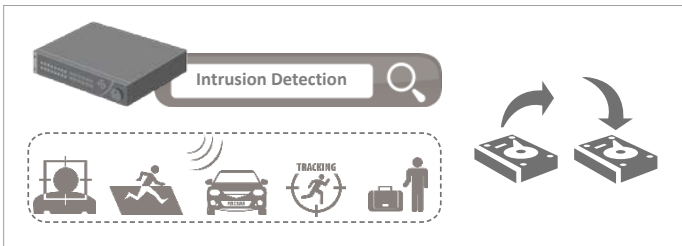
**- Multi-spot storage backup:**

When any active NVR is out of service, the standby NVR can take over recording automatically



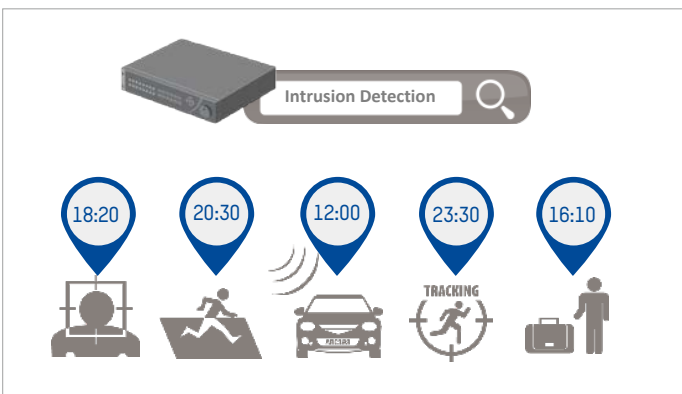
**Alarm Management**  
**Multi-users Notification**

- Real-time alarm notifications sent to iVMS5200P's control clients
- Even mobile clients can receive notifications
- One-Check-All mechanism allows one user to handle the event and others to simply receive notification



**Large Data Management**  
**Smart Backup**

- Supports event footage backup
- Saves maximum storage space



**Large Data Management**  
**Smart Search**

- Fully compatible with Hikvision Smart IP Cameras
- Easy and quick event search for snapshots and video recording
- Plays back the target event footage at standard speed and can fast-forward (up to 16x)
- Unrelated video can be skipped during playback

PRODUCT SHOWCASE



**DS-2CD4A26FWD-IZS/P**  
 (2.8-12mm)  
 ANPR Camera



- DarkFighter ultra-low light technology
- License Plate Recognition\*
- 1/1.8" progressive scan CMOS sensor
- Full HD1080p, up to 60fps
- 120dB WDR
- Full smart feature-set
- Up to 50m IR range
- Up to 128GB on-board storage
- Motorized lens with Smart Focus

\*customization process required based on local ANPR algorithm adaption



**DS-2CD6986F-H**  
 8MP 180°  
 Panoramic Network Camera



- 4 x 1/1.9" CMOS sensors, 1-ch
- 4096x1800 realtime video output
- 180o horizontal panoramic view
- DarkFighter ultra-low light technology



**DS-2TD2235D-25/50**  
 Thermal+Image Dual Lens  
 Bullet Camera

**Thermal Imager**

- VOX Uncooled focal plane detector
- Up to 384 x 288 resolution
- 25mm lens, FoV: 21.7° or 50mm lens, FoV: 11°
- Smart Detection: Intrusion detection, Line Crossing detection, Region Entering/Exit detection, Audio Exception detection, Hot Spot detection.

**Visual Imager**

- 1/1.8" progressive scan CMOS
- Darkfighter Ultra low light
- Up to 1920 x 1080 resolution
- 120m IR range
- 23mm/40mm fixed lens
- Support ROI

**General**

- Support on-board storage, Micro SD/SDHC/SDXC (card not included)
- Audio I/O: 1/1; Alarm I/O: 1/1
- Protection: IP66
- Built-in heater
- AC24V, max 40W
- -40 ~ 65 working temperature



**DS-2TD4035D-25/50**  
 Thermal+Image Dual  
 Lens PTZ Camera

**Thermal Imager**

- VOX Uncooled focal plane detector
- Up to 384 x 288 resolution
- 25mm lens, FoV: 21.7° or 50mm lens, FoV: 11°
- Smart Tracking: Panorama tracking, Event tracking, Multi-scene Patrolling
- Smart Detection: Intrusion detection, Line Crossing detection, Region Entering/Exit detection, Audio Exception detection, Hot Spot detection.

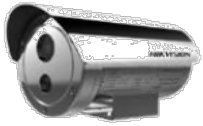
**Visual Imager**

- 1/3" progressive scan CMOS
- Up to 1920 x 1080 resolution
- 150m IR range
- Pan: 360°endless; tilt: -15° - 90°
- Support ROI

**General**

- Support on-board storage, Micro SD/SDHC/SDXC (card not included)
- Audio I/O: 1/1; Alarm I/O: 7/2
- Protection: IP66 protection
- wuhui5(Cherry.Wu) 01-13 16:34:51
- Built-in heater
- AC24V, max 50W
- -40 ~ 65 working temperature
- DS-2TD4035D-25/50
- Thermal+Image Dual Lens PTZ Camera

## PRODUCT SHOWCASE



**DS-2XE6222F-IS**  
Explosion-Proof & Corrosion-Resistant Network Camera

- H.265+/H.264+/H.265/H.264
- 2MP realtime resolution
- 120dB WDR
- ATEX, IECEx, IP68
- 316L Anti-Corrosion Standard: WF-2, NEMA 4X, C5-M
- Support on-board storage, up to 128GB
- AC 100V to 240V/PoE



**DS-M5504HNI**  
4-Channel Mobile NVR

- Supports 4 channels of 1080P IP video input
- 4-channel PoE interface
- Pluggable disk box with vibration damping technology
- 2x pluggable 2.5-inch HDDs / SSDs
- 1x SD/SDHC card slot
- Pluggable 3G/4G/Wi-Fi module (optional)
- Standard 1DIN dimensions
- EN50155 certification



**DS-2CD6626DS-IZ(H)S**  
Corrosion-Resistant Network Camera

- Ultra-low illumination technology
- 316L stainless steel housing
- 1/1.8" progressive scan CMOS sensor
- 2.8-12mm motorized VF lens
- 120dB WDR
- Full Smart Feature-set
- ISO C5-M, NEMA 4X certification



**DS-M7508HNI (/GW/WI)**  
On-board Network Recorder

- 1920x1080 high resolution
- Support 8-ch IP video with PoE interfaces
- Pluggable 3G module optional (/GW)
- Built-in Wi-Fi / GPS optional (/WI)
- Support two 2.5-inch HDDs / SSDs
- Hard disk box with USB interface supporting intelligent temperature control and data export
- M12 connectors ensuring signal stability
- Wide-range power input (+8VDC ~+36 VDC)
- Power-off protection avoiding data loss
- Aluminum die-cast chassis with no fan design well adaptable to working environment



**AE-VD521T-A2R1**  
HD Analog Mobile Camera

- 2.1mm fixed lens, 2.8/3.6mm optional
- 3-axis adjustment
- Up to 20m IR range
- IP68 weather-resistant
- Aviation plug
- DC6V ~ 16V



**DS-2CD6520ET-I(O)**  
2MP Outer-vehicle Mini Dome Network Camera

- Special design for vehicle-mounted
- 2MP real time resolution
- 3-axis adjustment
- M12 Ethernet interface(optional)
- Up to 30m IR range
- IP68, IK10
- EN50155, EN50121 certification

**PRODUCT SHOWCASE**



**DS-2CD6520DT-I(O)**  
2MP Inner-vehicle  
Mini Dome Network Camera

- Special design for vehicle-mounted
- 2MP real time resolution
- 3-axis adjustment
- M12 Ethernet interface(optional)
- IP54, IK8
- EN50155, EN50121 certification



**AE-VC521T-A5R1**  
HD Analog  
Mobile Camera

- HD720p resolution (HD-TVI technology)
- 2.1mm fixed lens, 2.8/3.6mm optional
- Up to 20m IR range
- IP68 weather-resistant
- Aviation plug
- DC6V ~ 16V



**DS-2CS5802P-C**  
Side View Camera  
**DS-MP1301**  
7-inch TFT-LCD screen

- 480TVL resolution
- 1.15mm wide angle lens
- FoV: 120 degree
- IP68 weather resistant
- Aviation plug
- DC6-16V



**DS-M5504HMI**  
4-Channel  
HD-TVI Mobile DVR

- Supports 4 channels of WD1 video input
- Pluggable disk box with vibration damping technology
- 1x 2.5-inch HDD/SSD
- Pluggable 3G/4G/Wi-Fi module (optional)
- Standard 1DIN dimensions
- EN50155 certification



**DS-M7504**  
4-ch HD-TVI Mobile DVR

- Supports 4 channels of 720P video input
- 4-ch POE interface
- Pluggable disk box with vibration damping technology
- 2x pluggable 2.5-inch HDDs / SSDs
- Pluggable 3G/4G model (optional)
- Built-in Wi-Fi/GPS (optional)
- Built-in G-sensor
- EN50155 certification



**DS-96128/256NI-I16/I24(/H)**  
Embedded Super NVR

- Maximum 576/768 Mbps bitrate Input
- Supports third party network cameras
- Up to 12MP resolution recording
- H version support 64-ch 1080P decoding capability
- HDMI output at up to 4K resolution
- Supports redundant power supply
- Up to 16/24 SATA interfaces , up to 8 TB for each HDD,
- HDD hot swapping with RAID 0/1/5/6/10
- One LCD screen optional , mini SAS optional

## PRODUCT SHOWCASE



**DS-9632/64NI-I8**  
Embedded 4K NVR  
**4K**

- Maximum 320Mbps bitrate Input
- 200Mbps bitrate input (RAID enabled)
- Support 3rd party network cameras
- Up to 12MP resolution recording
- Support H.264/H.264+/H.265 video format
- 2x HDMI & 2x VGA output (3840x2160)
- Support RAID0, 1, 5, 10
- Support redundant power supply
- Dual digital network interfaces
- 8x SATA, 1x eSATA, 2x USB2.0, 1x USB3.0
- 19-inch rack-mounted 2U chassis



**iVMS-5200 Professional**  
Video Management Platform

- Centralized device & user management
- Maximum connected devices per system: 1024
- Maximum 100 control client for system
- Support 3rd party integration via ONVIF & SDK
- Additional add-on modules:
  - LPR: license plate recognition
  - Transaction: POS integration + CCTV footage
  - Business Intelligence: people counting, heat mapping and retail traffic analytic
  - GIS: Vehicle tracking, GEO fencing



**DS-A81016S**  
Network Storage System

- High performance 64 bit RISC processor
- Up to 16 HDD, 6TB maximum capacity for each
- Up to 180-ch 4CIF real-time recording
- iSCSI/NFS/CIFS/FTP/HTTP/AFP protocols
- Support RAID 0, 1, 3, 5, 10, 50
- Support HDD hot-swapping
- Dual Gigabit network interfaces
- Modularized design for easy maintenance
- Redundant power design for high reliability



**DS-A82024D**  
Network Storage System

- High performance & easy extensible hardware platform
- Double controller system design
- Automatic service takeover
- Disk detection, repairing and RAID optimization
- Low power consumption
- 4U chassis structure, support up to 24 HDDs and cascade extension



**DS-M5504HNI**  
4-ch Mobile NVR

- Up to 12MP/14fps resolution
- 1/4/6/8/9/16 division
- 1-ch DVI and 1-ch VGA signal input(Except DS-6401HDI-T)
- DS-6401 supports HDMI/VGA/BNC interfaces
- Other models support DVI/BNC interfaces (HDMI/VGA requires converter)
- PC signal to display on video wall
- Screen joint and display
- Cross-window video roaming
- Video fluency enhancement



**DS-C10S-11/22/41/E**  
TV Wall Controller

- Maximum 184-ch analog, or 92-ch TVI or 92-ch HDMI/DVI/VGA input
- Maximum 72-ch HDMI/DVI/VGA output
- up to 72pcs screen joint
- Built-in Matrix
- Support joint, division and display
- Base map
- Cross-window video roaming
- Support hot plug
- Redundant power supply

**PRODUCT SHOWCASE**



**DS-D2046NL/H -C**  
**DS-D2055NL/H -B**  
 Ultra Slim Bezel LCD

- 46" or 55" screen dimension
- -NL: 500cd/ m<sup>2</sup> brightness
- -NH: 800cd/ m<sup>2</sup> brightness
- 3.5mm physical seam
- Defog, low-light compensation
- Edge processing, true native image
- Dynamic self-adaption noise reduction
- Cross color suppression
- Signal input: HDMI, DVI, VGA, BNC, YPbPr
- Signal output: DVI, VGA, BNC
- Remote control: IR in, Address ID
- RS232 control



**DS-D5032FL**  
 LCD Monitor

- 8bit/10bit 2-ch LVDS(1920\*1080) Full HD1080P resolution
- Adopt 3D digital comb filter
- True color OSD and user-friendly operation menu
- Adopt mstar ACE-5 auto color and image enhancement engine, to improve image contrast, detail
- 1 channel HDMI 1.3 input interface support HDCP 1.2
- Support video output
- Support audio I/O



**DS-6102 HLI/GW**  
 Portable Video Recorder

- H.264 Video Compression
- 3.5 inch IPS Touch Screen
- 5MP HD Camera
- Up to HD1080p Video Recording
- Up to 32GB Micro SD card recording
- Built-in 3G and GPS module



**DS-1100KI**  
 Network Keyboard

- 7" TFT touch screen with 800x480 resolution
- Live view and video playback
- Video wall control
- 4-axis joystick
- Macro command operation
- Up to 255 analog domes by RS-485 connection
- Compatible with Hikvision IP cameras, DVR/NVR, decoder, matrix



A SAFE HARBOR  
IN AN OCEAN OF THREATS  
SMART PORT & MARITIME SOLUTION



Distributed by



**HIKVISION**

**Headquarters**

No.555 Qianmo Road, Binjiang District,  
Hangzhou 310051, China  
T +86-571-8807-5998  
overseasbusiness@hikvision.com

**Hikvision USA**  
T +1-909-895-0400  
sales.usa@hikvision.com

**Hikvision Italy**  
T +39-0438-6902  
info.it@hikvision.com

**Hikvision Singapore**  
T +65-6684-4718  
sg@hikvision.com

**Hikvision Africa**  
Tel: +27 (10) 0351172  
sale.africa@hikvision.com

**Hikvision Europe**  
T +31-23-55-42-770  
info.eu@hikvision.com

**Hikvision France**  
T +33(0)1-85-330-450  
info.fr@hikvision.com

**Hikvision Oceania**  
T +61-2-8599-4233  
salesau@hikvision.com

**Hikvision Turkey**  
T +90-216-521-70-70  
sales.tr@hikvision.com

**Hikvision Middle East**  
T +971-4-8816086  
salesme@hikvision.com

**Hikvision Spain**  
T +34-91-737-16-55  
info.es@hikvision.com

**Hikvision Canada**  
T +1-909-895-0400  
sales.usa@hikvision.com

**Hikvision Kazakhstan**  
T +7-727-9730667  
nikia.panfilov@hikvision.ru

**Hikvision Russia**  
T +7-495-669-67-99  
saleru@hikvision.com

**Hikvision Poland**  
T +48-22-460-01-50  
poland@hikvision.com

**Hikvision Korea**  
T +82-31-731-8841  
sales.korea@hikvision.com

**Hikvision Hong Kong**  
T +852-2151-1761  
info.hk@hikvision.com

**Hikvision India**  
T +91-22-28469900  
sales@pramahikvision.com

**Hikvision UK**  
T +01628-902140  
support.uk@hikvision.com

**Hikvision Brazil**  
T +55 11 3318-0050  
Latam.support@hikvision.com

Follow us on social media to get the latest product and solution information



www.hikvision.com