

# PUTTING THE LOGIC INTO LOGISTICS SMART LOGISTICS SOLUTION

 smart solution **2.0**

**LOGISTICS** 2017-1H

# WITH HIKVISION AS YOUR INTEGRATION PARTNER, YOU WILL STAND ON A SOLID FOUNDATION.

## RAPID GROWTH

Hikvision is the world's leading supplier of video surveillance products and solutions, featuring the industry's strongest R&D workforce and state-of-the-art manufacturing facilities. In just 15 years, Hikvision has developed from being a single-product provider to a complete product and solution provider and a global market leader.

## GLOBAL REACH

- 25 Regional Subsidiaries
- 57% of Employees in International Business Center are locals



## BROAD PORTFOLIO

Hikvision's success stories extend over a number of vertical markets. Each year, we add new successes to our list. Still a relatively young company, we continually conquer new applications, building excellence and intelligence into all we do.

Our successful vertical market applications around the world include:

- Smart buildings
- City surveillance
- Parking facilities
- Banking and finance
- Critical infrastructure
- Hotels, casinos, and resorts
- Retail centers and warehouses
- Police, military, and mobile law enforcement
- Education, transportation, healthcare – and more!



## FUTURE INNOVATION

Hikvision re-invests upwards of 7% of annual revenue into R&D. We hold over 600 copyrights (100+ increase from 2016) and 1,300 patents (400+ increase from 2016). Of our 20,000 employees, we employ over 8,000 engineers, of which over 2,000 are software engineers.

Hikvision's Research Institute conducts innovative research and development to keep us at the forefront of technology.

- Research topics: Perceptive Technology, Intelligent Analysis Technology, Big Data and Cloud Storage Technology, and Multimedia Technology.
- The largest R&D team in Artificial Intelligence in the security industry.
- Sophisticated experience of video target detection, image segmentation, video structuring and video retrieval.
- Ranked No.1 in Scene Classification at ImageNet 2016 challenge and ranked top in the MOT Challenge Evaluation.

## STRONG NAME

Hikvision continues to build close partnerships with distributors, system integrators and installers, as well as third-party technology partners. Today, Hikvision has over 350 technology partners globally.

# ECOSYSTEM PARTNER PROGRAM WE SUPPORT YOU ALL THE WAY!

When joining this partner program, you will enjoy access to a wealth of technical and commercial resources, and we ensure that your solution enjoys strategic marketing through our communication channels. You will also get instant access to our entire sales organization. A vital part of our program is the streamlined online communication with our technical teams as well as the tools to plan the go-to-market activities.

## PROGRAM TOOLS AND BENEFITS

- **ISAPI** – Hikvision unifies the Application Programming Interface for all products
- **HEOP** – The Hikvision Embedded Open Platform enables you to download and run your applications directly in the cameras
- **Device Simulator** – Simulate communication protocols for testing and development
- **Integration Checker Tool** – Test your applications against the online integration checker tool
- **H-Certification** – Certify your integration/application as proof of compatibility

## SUPPORT

- SDK Training
- Integration Support
- Access to Integration Resources

## SALES & MARKETING

- Dedicated Business Development Planning
- Networking Opportunities with the Hikvision Salesforce
- Co-marketing and Event Opportunities





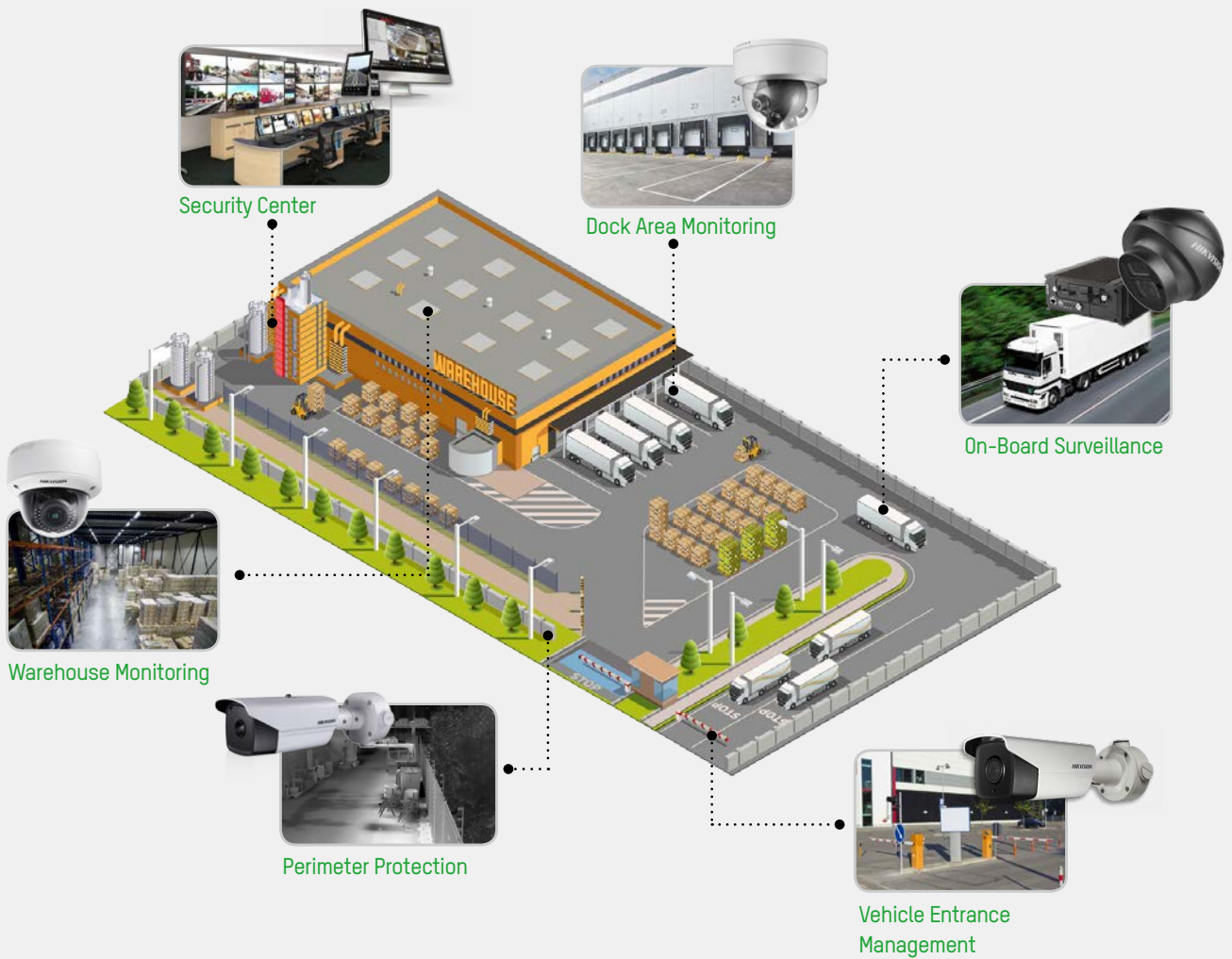
# SMART SOLUTION 2.0 FOR LOGISTICS INDUSTRIES

Merchandise in transit remains crucial to business viability. And safeguarding the flow of commercial goods from the point of origin to the point of consumption—over land, sea, and air—poses some of the greatest challenges for security teams. That’s why Hikvision has a dedicated solution for logistics operations.

Featuring the most advanced security and video surveillance technologies from the number-one solution provider worldwide, Hikvision’s Smart Solution 2.0 for Logistics Centers provides complete, end-to-end systems, tailored to specifics. Whether the concern is material goods, factory equipment, or consumables—or even abstract items, such information—Hikvision covers it. Intelligently.

- Secures entire logistics centers, indoors and outdoors 24/7
- Ensures safety during transportation
- Provides more valuable video information for management optimization





# MONITORING PERIMETER PROTECTION

Perimeter areas are often out of the reach of security guards, and are vulnerable to crimes and illegal entry, especially at night. Hikvision's DarkFighter PTZ and Vandal-Resistant Bullet Cameras are the best fit for combining excellent image quality, Smart detections, and Auto Tracking capability.



Traditional camera

DarkFighter PTZ camera

When monitoring extended fencing areas, or when staff privacy issues come up and conventional video resources might go against regulations, Thermal Imaging Cameras are the perfect choice to keep perimeters Smart and safe without breaking any protocols.



Thermal network camera

# MONITORING DOCK AREA

Warehouse docks are the busiest areas for logistics centers, with scores of trucks and various personnel handling goods every day. Setting up one standalone CCTV camera on every dock gate to monitor daily operations has been the conventional means for logistics owners to establish surveillance. However, this method has become too time-consuming and ineffective due to installation, recurring maintenance, and total costs.



PanoVu camera

# MONITORING WAREHOUSE MONITORING

Poor visibility, expansive indoor areas, the high-resolutions required for parcel tracking – all these requirements and more are met by Hikvision's cameras. From DarkFighter's ultra-low-light camera to 4K resolution panoramic fisheye cameras, Hikvision gives you the most technologically advanced eyes to see like never before.



Traditional camera



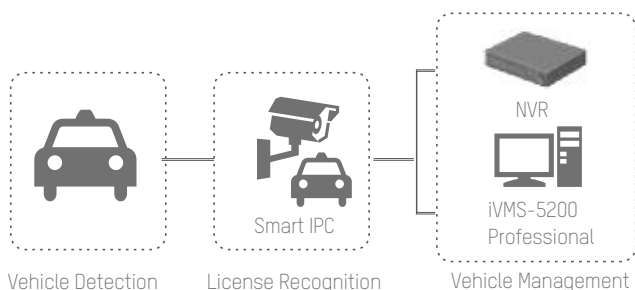
DarkFighter camera

## LOGISTICS

## VEHICLE ACCESS MANAGEMENT

Hikvision Vehicle Access system combines high quality ANPR cameras and back-end devices to create barrier linkage, B/W list filtering and alarm triggering.

\*The exact functionalities may vary based on local strategy and product development.



- License Plate Recognition
- Vehicle Detection
- Vehicle Management
- Smart Search / Smart Backup

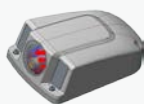


## VEHICLES ON-BOARD SURVEILLANCE

The on-board solution provides monitoring on all-sides of a vehicle to eliminate drivers' blind spots. When trucks back-up or turn a blind corner in the middle of warehouse parking areas with this solution, they have virtual eyes looking in every direction at once.



## VEHICLES MOBILE DEDICATED PRODUCTS



### All Weather Conditions

Special heating & fan modules for outer-vehicle cameras and mobile recorder operate in all weather conditions.



### Reliable Transmission

An intelligent algorithm adjusts the live stream bitrate automatically according to network conditions.



### High-Reliability Storage

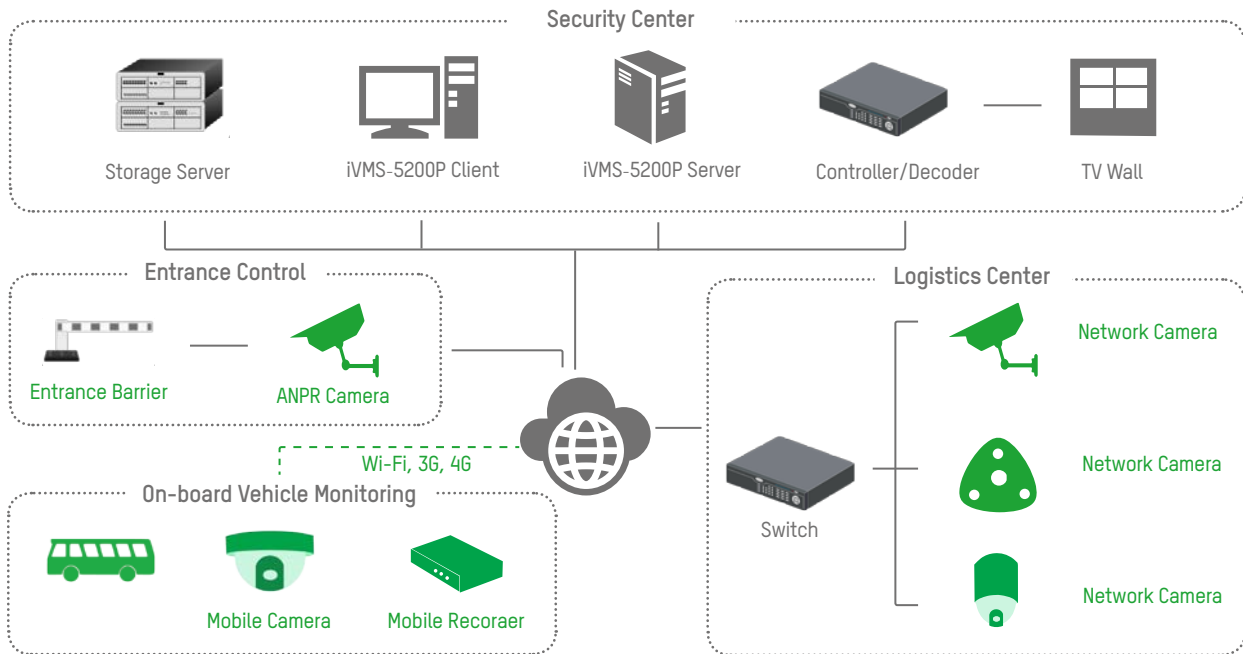
Featuring fully enclosed with dual-protected HDD and patented aviation airbag, reinforced camera materials with silicone pad for shock absorption, and support for multiple, specialized connectors for vehicles or rail transport.



### Power Protection

A wide range of power supplies support the main board of Hikvision's mobile video recorder – from 9 to 32V with short-circuit protection. Mobile video recorder uses high volume capacitors, powering the recorder for 5 – 7 seconds after being turned off so the recorder has enough time to write video to the HDD in an emergency.

# SECURITY CENTER FOR LOGISTICS OPERATIONS



Storage Server



Modularized design and hot plugging for easy maintenance



Double controller & power module for data safety



Supports CVR mode for better return on investment



LAN



Decoder

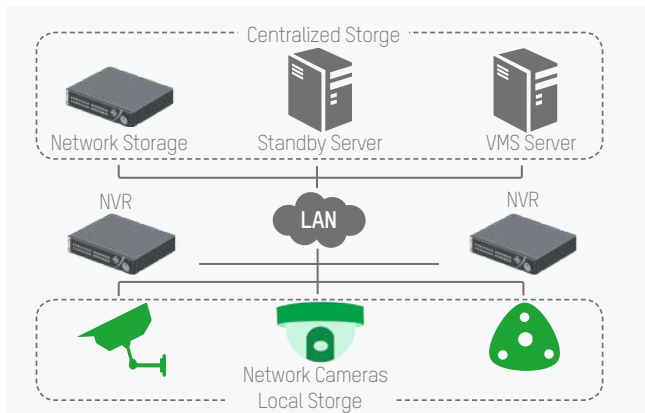


Video Wall Controller



TV Wall





**Data Safety**  
**Flexible Storage**

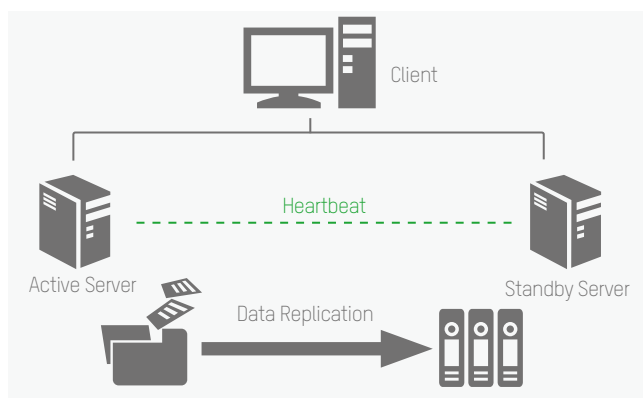


- 2-Layer storage for critical video recording
- NVRs for local storage – Reliable and cost effective
- Centralized storage for key video back-up in the control center

**Data Safety**  
**Server Redundancy Design**



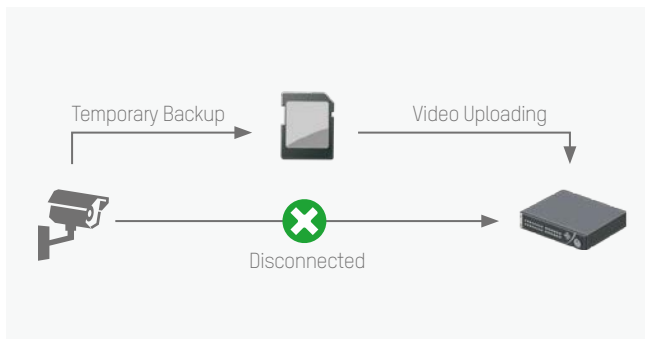
- Active & standby servers
- "Heartbeat" function automatically backs up users' information if one server is interrupted
- Ensures users' live view and playback in case of failover



**Data Safety**  
**Auto Network Recovery (ANR)**



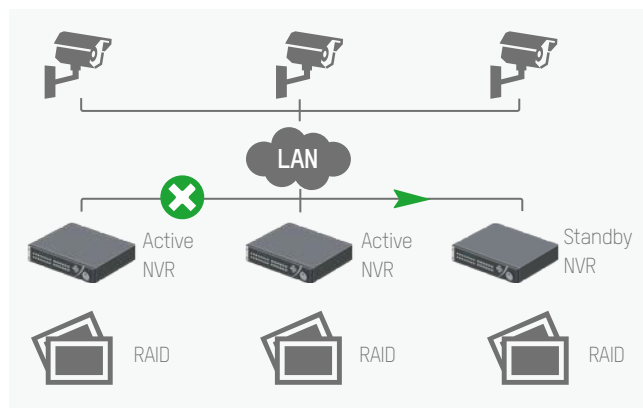
- Auto backup if network connection is interrupted
- Data moves from SD card to back-end device while network connection is restored
- We recommended using Hikvision brand Micro SD card for ANR storage

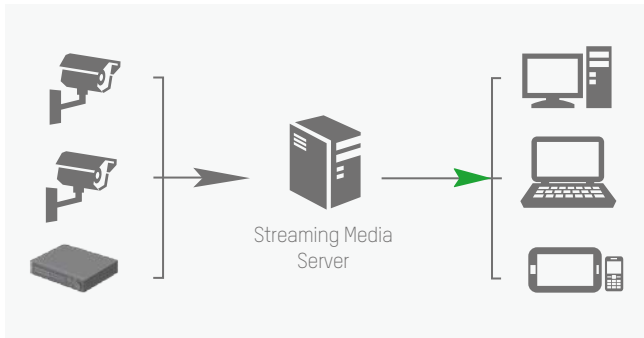


**Data Safety**  
**RAID & N+1 Failover**



- **Single-spot storage backup:** Multi-RAID supported by embedded NVR and Storage Server
- **Multi-spot storage backup:** When any active NVR is out of service, the standby NVR can take over recording automatically





**Transmission Optimization**  
**Streaming Media Server**



- Hikvision Streaming Media Servers enable multiple users to view live or playback the same camera using only one channel of bandwidth transmission
- 1 Streaming Media Server supports up to 200 x 2 Mbps video data streaming and up to 200 channels

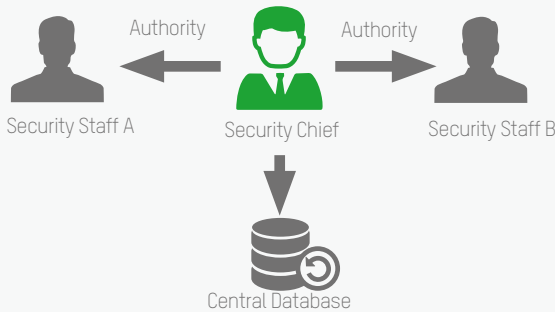
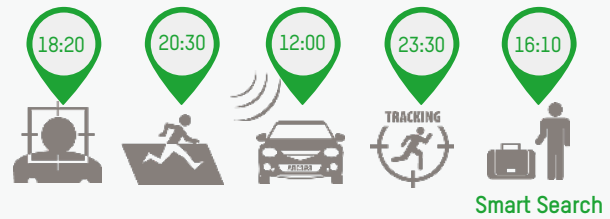
**Large Data Management**  
**Smart Backup**



- Supports event footage backup
- Saves maximum storage space
- Fully compatible with Hikvision Smart IP Cameras

**Smart Search**

- Easy and quick event search for snapshots and video recording
- Plays back the target event footage at standard speed and can fast-forward (up to 16x)
- Unrelated video can be skipped during playback



**Centralized Management**  
**Security Operator Authority**

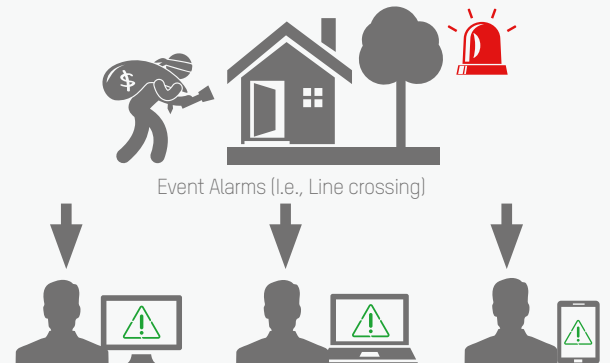


- Centralized management of security personnel and authorities
- Security personnel have assigned authority levels, such as live view, playback, area cameras, or PTZ control
- Higher permission-level users have priority control over the system, i.e., they can takeover PTZ control, force the logout of lower-level users, and more

**Centralized Management**  
**Alarm Verification and Handling**



- Various types of events trigger real-time alarms and notifications to security operators, like motion detection, line crossing, intrusion detection, face detection, etc.
- Alarm flashing in E-Map notifies security operators
- Alarms link to predefined cameras in the form of pop-up images/video for visual verification
- One-check-all mechanism allows one user to handle alarm events while others get notifications





DS-2CD4A26FWD-IZS/P  
ANPR Camera

**DARKFIGHTER**

- Darkfighter Ultra-low light technology
- 1920x1080 high resolution
- Full HD1080p video, up to 60fps
- 120dB WDR
- 2.8-12mm Motorized VF lens Smart Auto Focus
- Up to 50m IR range
- IP67 Weather-proof protection
- DC12V & PoE
- Support on-board storage, up to 128GB
- On-board ANPR Analytics, B/W list filtering
- Built-in Smart Heater (-H)
- Audio/Alarm I/O connectors (-S)
- Support Barrier linkage via RS485



DS-2DF8236I-AEL(W)  
Outdoor PTZ Camera

**DARKFIGHTER**

- 1920x1080 Full HD high resolution
- Darkfighter Ultra Low Light
- 36x Optical Zoom
- Smart Auto Tracking
- Smart Detection
- Smart Defog
- Up to 200m IR range
- IP66 Weather-resistant housing
- IK10 Vandal-resistant protection
- AC24V & High PoE
- -W: with Wiper



DS-2CD4626FWD-IZ (H)  
Outdoor IR Bullet Camera

**DARKFIGHTER**

- 1920x1080 Full HD high resolution
- DarkFighter Ultra Low Light
- 2.8 - 12mm Vari-focal lens
- Smart Auto Focus
- Smart Detection & Alarm
- Smart Defog
- Up to 70m IR range
- IP66 Weather-resistant housing
- IK10 Vandal-resistant protection
- Built-in heater optional (-H)
- Support on-board storage
- Support H.264+ Smart Codec, up to 60% bandwidth&storage saving



DS-2TD2136-10/15/25  
Thermal Network Single-Lens  
Bullet Camera

- Thermal resolution: 384 × 288
- 10 mm [36°] / 15 mm [24°] / 25 mm [15°] thermal lens option
- IP66 Protection Rating
- Support line crossing and intrusion detection
- Support temperature anomaly alarm
- Support fire detection



DS-2TD2166-15/25/35  
DS-2TD2166T-15/25/35  
Thermal Network Single-Lens  
Bullet Camera

- Thermal resolution: 640 × 512
- 15mm [39°] / 25mm [24°] / 35 mm [17°] thermal lens option
- Support line crossing and intrusion detection
- Support temperature anomaly alarm
- Support fire detection
- -T: -20° C - 550° C [-4° F - 1,022° F] temperature range, max. ± 2° C, ± 2% temperature accuracy (only DS-2TD2166T supported)
- IP66 Protection rating



DS-2CD6986F (-H)  
PanoVu Multi-Imagers  
DarkFghter Camera

**PanoVu**

- Four 2 MP Darkfighter imagers
- On-board stitching, up to 8 MP resolution
- Up to 4096 x 1800 180° panoramic view
- 5 mm fixed lens
- Ultra-low-light capability
- Supports on-board storage, up to 128 GB
- Audio/alarm I/O interfaces
- IP66 weather-resistant protection
- 12VDC & PoE power supply
- -H: Built-in heater & fan optional

## PRODUCT SHOWCASE



**DS-2CD63C2F-I (S)(V)**  
12MP Fisheye  
Network Camera

- 360° Panoramic View
- Up to 4000x3072 resolution, 20fps
- ePTZ control, up to 1600x1600 resolution
- Support Heat Mapping Analytic
- Support People Counting (2015.07)
- On-board hardware de-warping
- Support software de-warping (via iVMS5200P)
- 3 x IR LEDs, up to 15m IR range
- Built-in MIC & speaker
- -V: outdoor option with IP66 weather-resistant
- -S: Audio/Alarm IO interface option
- 6MP & 3MP Fisheye is also available:
- DS-2CD6362F-I (up to 3072x2048, 25fps)
- DS-2CD6332FWD-I (up to 2048x1536, 25fps)



**DS-2DE4A204IW-DE**  
2MP Network Mini IR PTZ Camera

- 1/1.9" Progressive Scan CMOS
- Up to 1920 × 1080 resolution
- Ultra-low light
- 4× Optical Zoom, 16× Digital Zoom
- WDR, 3D DNR, HLC, Smart IR
- Up to 50 m IR distance
- 12 VDC & PoE+ (802.3at, class4)
- Support H.265 video compression



**DS-2CD4126FWD-IZ**  
DarkFighter Series 2MP Indoor  
Dome Network Camera

**DARKFIGHTER** ✨

- DarkFighter ultra-low light technology
- 1/1.8" progressive scan CMOS sensor
- Full HD1080p, up to 60fps
- 120dB WDR
- Full smart feature-set
- Motorized lens with Smart Focus
- Up to 128GB on-board storage
- Up to 30m IR range
- Vandal-resistant housing



**AE-VC122T-IT(S)**  
1MP IR Mobile Dome Camera

- 1.0MP Progressive Scan CMOS
- Turbo HD output, up to 720P resolution
- 0.1Lux @(F1.2,AGC ON),0 Lux with IR
- Adopt wide-angle lens with wider monitoring coverage
- Support electronic shutter and AGC
- Up to IP68 protection level
- Patented universal regulating mechanism, easy to adjust
- Anti-vibration design and aviation port for mobile environments
- Built-in microphone(-S)



**AE-VC151T-IT**  
IR Mobile Dome Camera

- 1.0MP Progressive Scan CMOS
- Turbo HD output, up to 720P resolution
- 0.1Lux @(F1.2,AGC ON),0 Lux with IR
- Adopt wide-angle lens with wider monitoring coverage
- Support electronic shutter, AGC and auto Day & Night switch
- Up to IP68 protection level
- Anti-vibration design and aviation port for mobile environments



**AE-VC041/031P(N)**  
Wide-Angle Rear  
View Camera

- ¼" Progressive Scan CMOS
- 480 TVL resolution
- 1.15 mm / F2.0 fixed lens
- 196° Wide angle view
- Aviation connector
- Operating temperature: -30-70°
- IP68 Weather-resistant protection
- -C: Cylinder-shaped housing for in-vehicle monitoring
- -F: Cube-shaped housing for blind spot detection on vehicle's side view

## LOGISTICS

PRODUCT SHOWCASE



**DS-MP7504(GW/WI)**  
4-Channel Mobile HD-TVI DVR

- HD720p resolution
- 4-Ch. video input with aviation connection
- Pluggable 3G module optional (/GW)
- Pluggable Wi-Fi / GPS optional (/WI)
- 1-Ch. CVBS video output / 1-ch. audio output
- 1-Ch. VGA video output
- Supports two 2.5-inch HDDs / SSDs
- Hard drive bay with USB interface supports intelligent temperature control and data export
- Wide-range power input (8 to 36 VDC)
- Power-off protection to prevent data loss
- Aluminum die-cast chassis without fan adapts well to working environments
- \* HD-TVI is Hikvision patented HD video over coax technology.



**DS-M5504HMI**  
Mobile DVR

- Supports 4 channels of WD1 video input
- Pluggable disk box with vibration damping technology
- 1x 2.5-inch HDD/SSD
- Pluggable 3G/4G/Wi-Fi module (optional)
- Standard 1DIN dimensions
- EN50155 certification



**DS-96128/256NI-I16/I24**  
Embedded Super NVR

- Maximum 512/768 Mbps bitrate input
- Supports 3rd party network cameras
- Up to 12 MP resolution recording
- 4K HDMI output, 1080p VGA output
- Supports H.264/H.264+, H.265 video formats
- Supports RAID 0, 1, 5, 6, 10, 50, 60, and JBOD
- Supports redundant power supply
- I16: 16 x SATA; I24: 24 x SATA



**DS-9632/64NI-I8/I16**  
Embedded 4K NVR  
**4K**

- Maximum 320 Mbps bitrate Input
- 200 Mbps bitrate input (RAID enabled)
- Supports 3rd party network cameras
- Up to 12 MP resolution recording
- Supports H.264/H.264+, H.265 video formats
- Supports RAID 0, 1, 5, 6, 10
- Supports redundant power supply
- I8: 8 x SATA; I16: 16 x SATA



**iVMS-5200 Professional**  
Video Management Platform

- Centralized device & user management
- Maximum connected devices per CMS: 1,024
- Support RSM to control 5 CMS for large system
- Number of users per RSM: 100
- Up to 16 web clients
- Up to 24 mobile clients
- Supports 3rd party integration via ONVIF & SDK
- Additional add-on modules:  
ANPR: Automatic no. plate recognition  
Transaction: POS integration + CCTV footage  
Business Intelligence: People counting, heat mapping and retail traffic analytic  
GIS: Vehicle tracking, GEO fencing



**Blazer Pro 128/256**  
High Video Management Platform

- Ready to use, preinstalled with Hikvision professional VMS and windows 8.1 centralized device & user management
- Up to 256 channels access licensed
- 2-board design – 1 board for VMS, 1 for storage, resulting in higher reliability
- Embedded decoding capacity, support for 2x2 screen displays – a more economical solution
- HDD hot swapping with RAID 0, 1, 5, 10, N+1 equipment hot spare ensures data reliability
- Control client / Web client / Mobile client support

## PRODUCT SHOWCASE



**DS-TPE100 (PS-1/2/4T)**  
Entrance Control Terminal

- Built-in iVMS-5200P PMS client
- Parking client supports three modes: Entrance, exit, and entrance & exit
- Supports barrier control via serial port
- Image snapshot and storage for ANPR camera
- Supports fuzzy search of license plate numbers
- Displays available parking stalls
- 2 x alarm inputs and 4 x alarm outputs, 2 x RS232, 2x RS485
- 6 x Ethernet ports  
(1T): 1 TB HDD included  
(2T): 2 TB HDD included  
(4T): 4 TB HDD included



**DS-A81016S**  
Network Storage System

- High performance 64 bit RISC processor
- Up to 16 HDD, 4TB maximum capacity for each
- Up to 180-ch 4CIF real-time recording
- iSCSI/NFS/CIFS/FTP/HTTP/AFP protocols
- Support RAID 0, 1, 3, 5, 10, 50
- Support HDD hot-swapping
- Dual Gigabit network interfaces
- Modularized design for easy maintenance
- Redundant power design for high reliability



**DS-A82024D**  
Network Storage System

- High performance & easy extensible hardware platform
- Double controller system design
- Automatic service takeover
- Disk detection, repairing and RAID optimization
- Low power consumption
- 4U chassis structure, supporting up to 24 HDDs and cascade extension



**DS-C10S-S11/22/41/E**  
TV Wall Controller

- Maximum 184-ch analog, or 92-ch TVI or 92-ch HDMI/DVI/VGA input
- Maximum 72-ch HDMI/DVI/VGA output
- Up to 72-piece screen joint
- Built-in Matrix
- Supports jointing, division, and display
- Base map
- Cross-window video roaming
- Support hot plugging
- Redundant power supply



**DS-6916UDI**  
Ultra High Definition Decoder

- 16-ch 12MP or 128-ch 1080P decoding
- Decoding output via HDMI and BNC interface
- Up to 4K (3840 × 2160@30Hz) via HDMI output interfaces (only for even interface)
- 1/4/6/8/9/12/16/25/36 division
- H.265/H.264+/H.264/MPEG4 /MPEG2/MJPEG format
- Build-in 16 port 100M switch
- Two-way audio



**DS-D2046NL/H -C**  
**DS-D2055NL/H -B**  
Ultra Slim Bezel LCD

- 46" or 55" screen dimension
- -NL: 500cd/ m<sup>2</sup> brightness
- -NH: 800cd/ m<sup>2</sup> brightness
- 3.5mm physical seam
- Defog, low-light compensation
- Edge processing, true native image
- Dynamic self-adaption noise reduction
- Cross color suppression
- Signal input: HDMI, DVI, VGA, BNC, YPbPr
- Signal output: DVI, VGA, BNC
- Remote control: IR in, Address ID
- RS232 control



DS-D5032FL 32-inch  
DS-D5022FL 22-inch  
LCD Monitor

- 8bit/10bit 2-ch LVDS(1920\*1080) Full HD1080P resolution
- Adopt 3D digital comb filter
- True color OSD and user-friendly operation menu
- Adopt mstar ACE-5 auto color and image enhancement engine, to improve image contrast, detail
- 1 channel HDMI 1.3 input interface support HDCP 1.2
- Support video output
- Support audio I/O



DS-MP1301  
On-board Display Screen

- 7inch TFT-LCD
- Resolution: 800×480
- Live view of mobile devices
- 3 aviation plug



PUTTING THE LOGIC  
 INTO LOGISTICS  
**SMART LOGISTICS SOLUTION**



Distributed by



**HIKVISION**

**Headquarters**

No.555 Qianmo Road, Binjiang District,  
 Hangzhou 310051, China  
 T +86-571-8807-5998  
 overseasbusiness@hikvision.com

**Hikvision USA**  
 T +1-909-895-0400  
 sales.usa@hikvision.com

**Hikvision Italy**  
 T +39-0438-6902  
 info.it@hikvision.com

**Hikvision Singapore**  
 T +65-6684-4718  
 sg@hikvision.com

**Hikvision Africa**  
 Tel: +27 (10) 0351172  
 sale.africa@hikvision.com

**Hikvision Europe**  
 T +31-23-55-42-770  
 info.eu@hikvision.com

**Hikvision France**  
 T +33(0)1-85-330-450  
 info.fr@hikvision.com

**Hikvision Oceania**  
 T +61-2-8599-4233  
 salesau@hikvision.com

**Hikvision Turkey**  
 T +90-216-521-70-70  
 sales.tr@hikvision.com

**Hikvision Middle East**  
 T +971-4-8816086  
 salesme@hikvision.com

**Hikvision Spain**  
 T +34-91-737-16-55  
 info.es@hikvision.com

**Hikvision Canada**  
 T +1-909-895-0400  
 sales.usa@hikvision.com

**Hikvision Kazakhstan**  
 T +7-727-9730667  
 nikia.panfilov@hikvision.ru

**Hikvision Russia**  
 T +7-495-669-67-99  
 saleru@hikvision.com

**Hikvision Poland**  
 T +48-22-460-01-50  
 poland@hikvision.com

**Hikvision Korea**  
 T +82-31-731-8841  
 sales.korea@hikvision.com

**Hikvision Hong Kong**  
 T +852-2151-1761  
 info.hk@hikvision.com

**Hikvision India**  
 T +91-22-28469900  
 sales@pramahikvision.com

**Hikvision UK**  
 T +01628-902140  
 support.uk@hikvision.com

**Hikvision Brazil**  
 T +55 11 3318-0050  
 Latam.support@hikvision.com

Follow us on social media to get the latest product and solution information



www.hikvision.com