



SYNERGIZING SECURITY  
**SMART INTEGRATED SECURITY  
SYSTEMS SOLUTION**

 smart solution **2.0**

# WITH HIKVISION AS YOUR INTEGRATION PARTNER, YOU WILL STAND ON A SOLID FOUNDATION.

## RAPID GROWTH

Hikvision is the world's leading supplier of video surveillance products and solutions, featuring the industry's strongest R&D workforce and state-of-the-art manufacturing facilities. In just 15 years, Hikvision has developed from being a single-product provider to a complete product and solution provider and a global market leader.

## GLOBAL REACH

- 28 Regional Subsidiaries
- 57% of Employees in International Business Center are locals



## BROAD PORTFOLIO

Hikvision's success stories extend over a number of vertical markets. Each year, we add new successes to our list. Still a relatively young company, we continually conquer new applications, building excellence and intelligence into all we do.

Our successful vertical market applications around the world include:

- Smart buildings
- City surveillance
- Parking facilities
- Banking and finance
- Critical infrastructure
- Hotels, casinos, and resorts
- Retail centers and warehouses
- Police, military, and mobile law enforcement
- Education, transportation, healthcare – and more!



## FUTURE INNOVATION

Hikvision re-invests upwards of 7% of annual revenue into R&D. We hold over 600 copyrights (100+ increase from 2016) and 1,300 patents (400+ increase from 2016). Of our 20,000 employees, we employ over 8,000 engineers, of which over 2,000 are software engineers.

Hikvision's Research Institute conducts innovative research and development to keep us at the forefront of technology.

- Research topics: Perceptive Technology, Intelligent Analysis Technology, Big Data and Cloud Storage Technology, and Multimedia Technology.
- The largest R&D team in Artificial Intelligence in the security industry.
- Sophisticated experience of video target detection, image segmentation, video structuring and video retrieval.
- Ranked No.1 in Scene Classification at ImageNet 2016 challenge and ranked top in the MOT Challenge Evaluation.

## STRONG NAME

Hikvision continues to build close partnerships with distributors, system integrators and installers, as well as third-party technology partners. Today, Hikvision has over 350 technology partners globally.

# ECOSYSTEM PARTNER PROGRAM WE SUPPORT YOU ALL THE WAY!

When joining this partner program, you will enjoy access to a wealth of technical and commercial resources, and we ensure that your solution enjoys strategic marketing through our communication channels. You will also get instant access to our entire sales organization. A vital part of our program is the streamlined online communication with our technical teams as well as the tools to plan the go-to-market activities.

## PROGRAM TOOLS AND BENEFITS

- **ISAPI** – Hikvision unifies the Application Programming Interface for all products
- **HEOP** – The Hikvision Embedded Open Platform enables you to download and run your applications directly in the cameras
- **Device Simulator** – Simulate communication protocols for testing and development
- **Integration Checker Tool** – Test your applications against the online integration checker tool
- **H-Certification** – Certify your integration/application as proof of compatibility

## SUPPORT

- SDK Training
- Integration Support
- Access to Integration Resources

## SALES & MARKETING

- Dedicated Business Development Planning
- Networking Opportunities with the Hikvision Salesforce
- Co-marketing and Event Opportunities



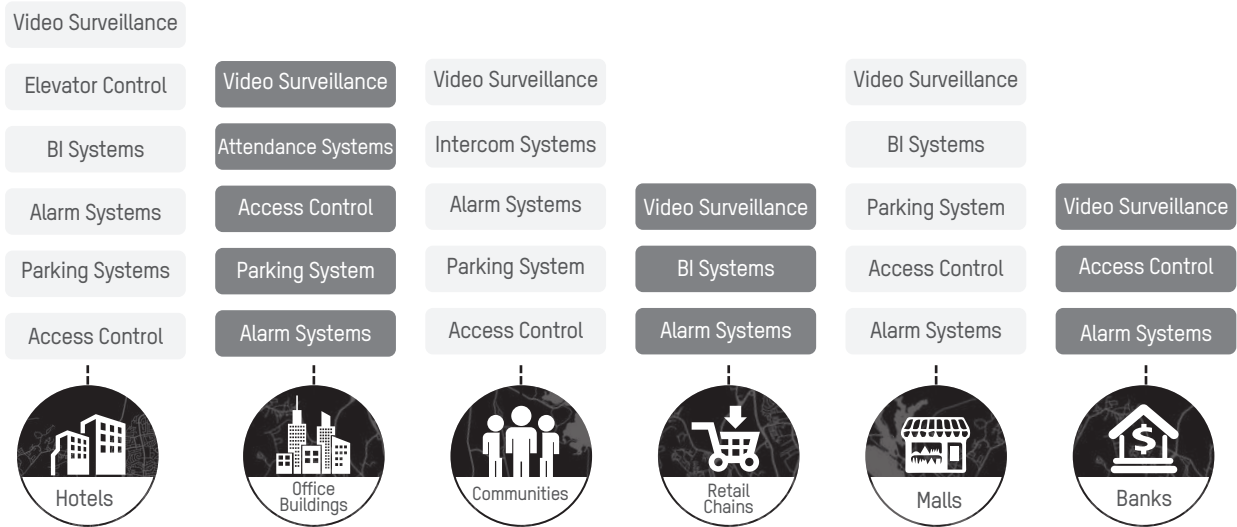
# SMART INTEGRATED SECURITY SYSTEMS SOLUTION

In any comprehensive security system, obstacles abound. A complete and easy-to-use central system is absolutely crucial. Hikvision's Smart Solution 2.0 provides the platform for today's sophisticated security needs. Open to third-party systems, each subsystem seamlessly integrates into one iVMS platform. This means an optimized linkage strategy, better business intelligence, and lower cost. In short: better service for customers.

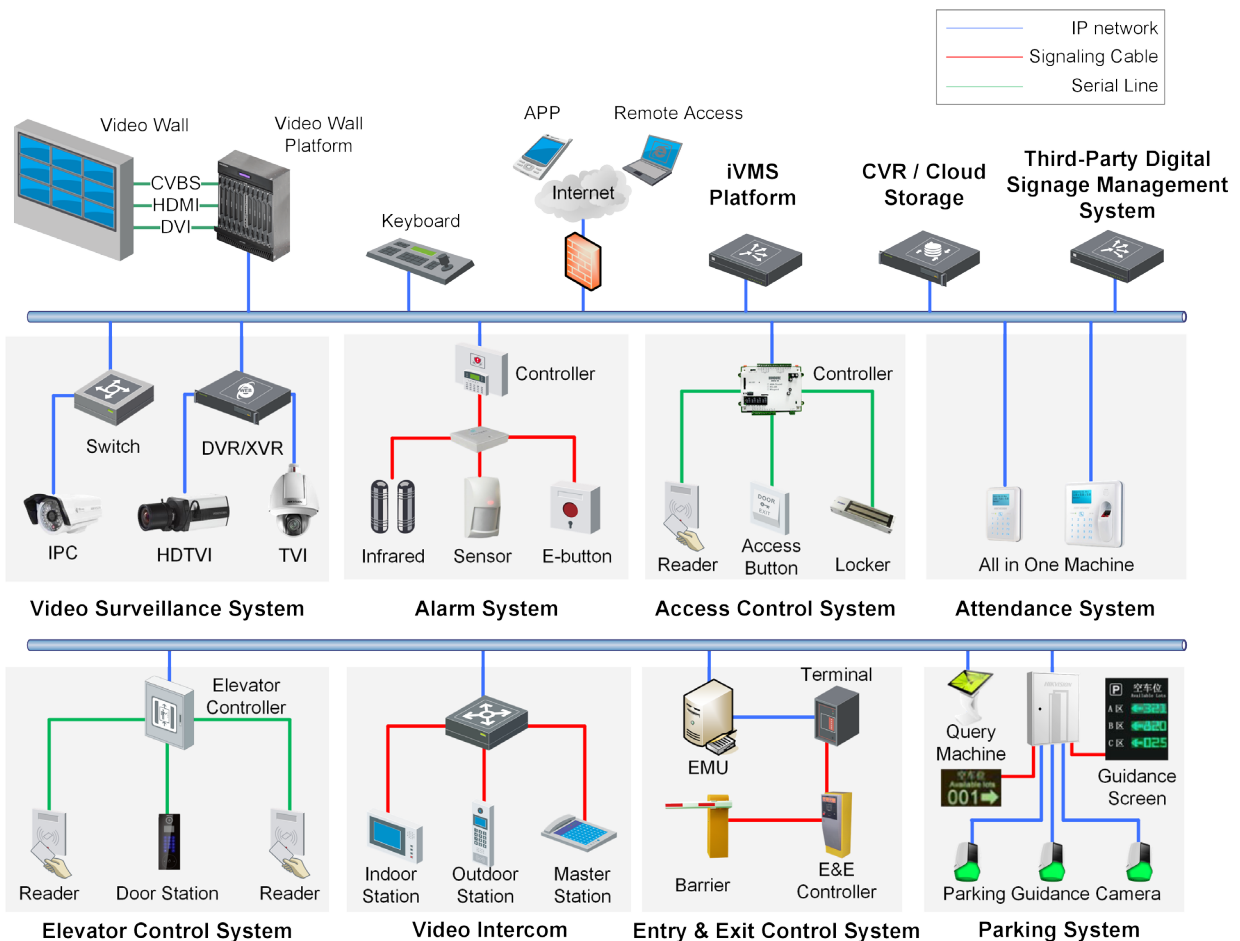
- Unified hardware and interface
- Unified user data
- Shared software & hardware resources
- Improved management efficiency
- Optimized linkage strategy
- Better business intelligence
- Lower maintenance cost

# SOLUTION FLEXIBILITY

Hikvision's iVMS Platform is based on modularized architecture that enables customers to choose unique sub-system combinations as a solution package according to their specified needs.



# SOLUTION ARCHITECTURE

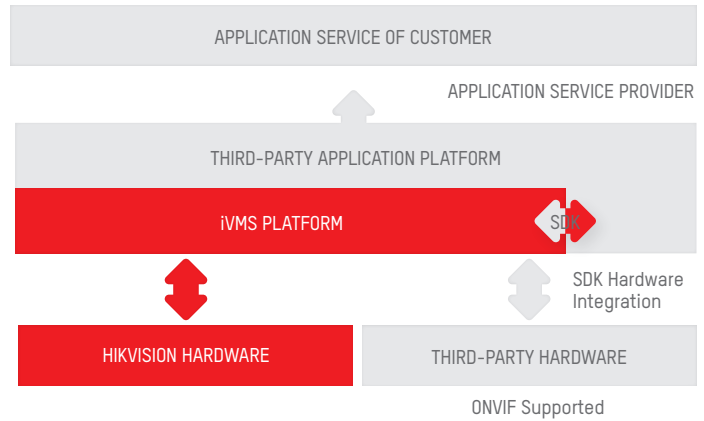


# OPEN ARCHITECTURE

## ▶ THIRD-PARTY INTEGRATION

### Platform Integration

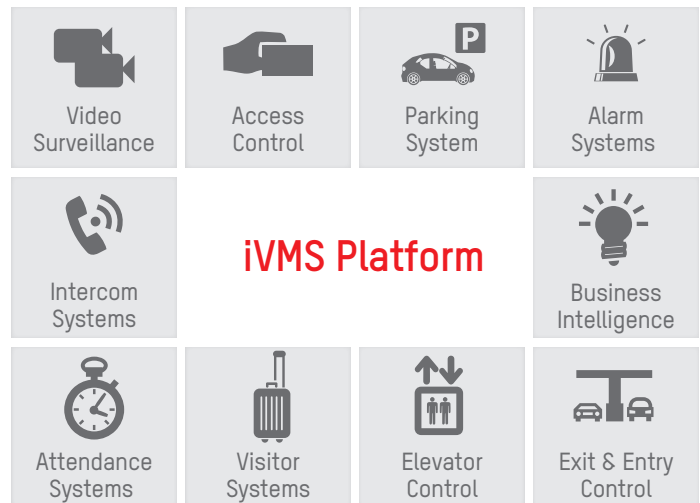
- Integrates into upper layer as one subsystem/module, or as hardware management platform
- SDK Provider (Excluding Video): Parking Systems, Access Control Systems, Alarm Systems, etc.
- ONVIF fully supported



# SOLUTION PLATFORM

## ▶ SUBSYSTEMS

- All subsystems are controlled and managed using one iVMS Platform
- The hardware, protocol, command line, and after-sales channels are all highly unified

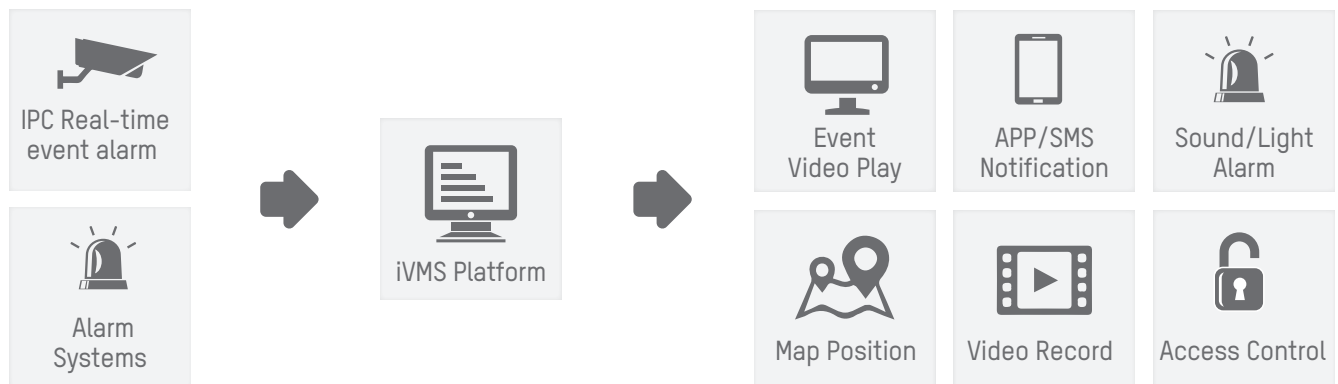


## ▶ SUBSYSTEM LINKAGE

When a linkage strategy is configured on the iVMS platform, any alarm or event on one subsystem can trigger any of several linkage actions on another, separate subsystem.

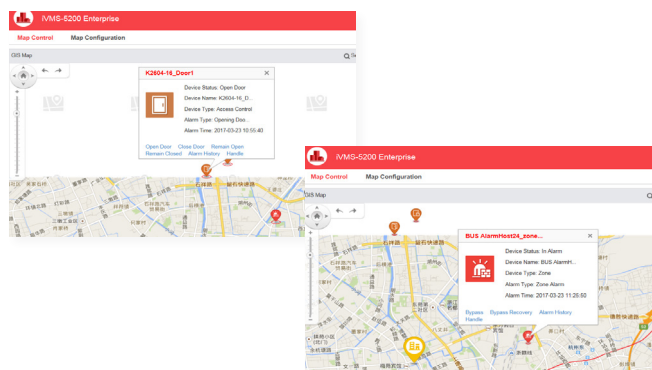
### Example:

An IP Camera's real-time event or alarm system can trigger video recording and playback on the video wall, the map system will indicate the location of the event, the door and elevator can be configured to lock to prevent a suspect's escape, and the system will send a notification to the operator by SMS or app.



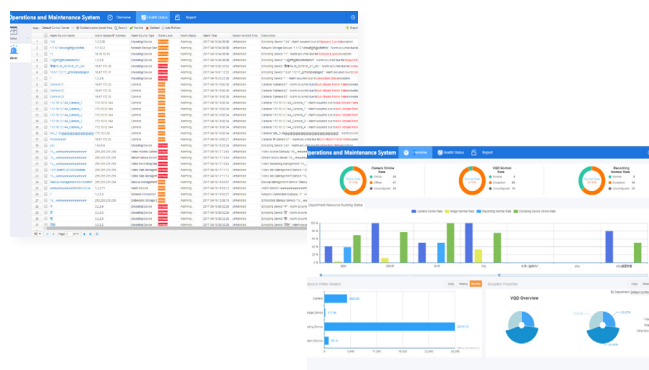
# BASIC MODULE

## ► E-MAP



- Online GIS Map supported
- Static map in .BMP/.JPG format supported
- Real-time device positioning and playback by tracking on GIS map
- Add camera icons, I/O devices, and access controllers on static maps

## ► MAINTENANCE



- Monitor maintenance information including online status, recording status, and online rates of managed devices in real-time
- Analyze video quality and receive alarm information covering video loss and video interference
- Generate statistics and reports of online rates, recording status, number of video anomalies, and video quality analyses

# SUBSYSTEMS

## ► VIDEO SURVEILLANCE

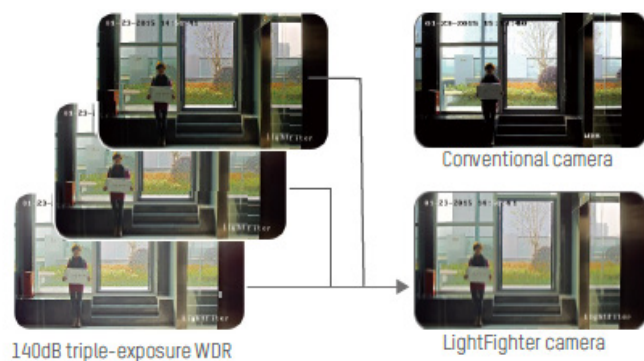
Hikvision Smart IP Cameras carry a full Smart feature set such as intrusion detection, object left/removal detection, etc., to better assist any security management.



**DARKFIGHTER**

### LOW-LIGHT DarkFighter cameras

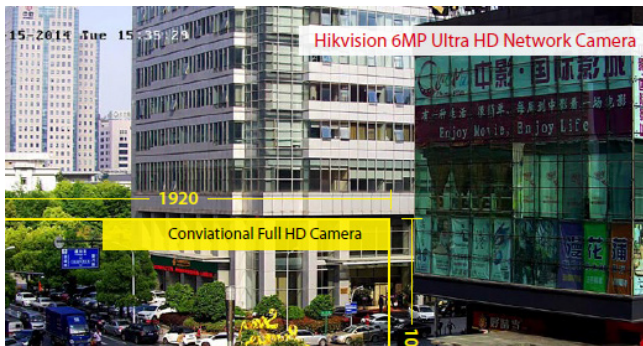
With industry-leading, ultra-low-light technology, the DarkFighter Camera Series offers a host of Smart functions that make colored images possible in dim environments. All DarkFighter Cameras feature Hikvision's Smart technologies, which combine intelligence, efficiency, and ease-of-use in modern video surveillance equipment.



**LIGHTFIGHTER**

### WDR LightFighter Cameras

The LightFighter Camera Line carries the technology needed to overcome even the most harshly lit environments, such as direct, late-morning or afternoon sunlight. Engineered with an industry-leading 140 dB WDR ability, LightFighter Cameras see through intense light to produce crystal-clear images with true color reproduction.



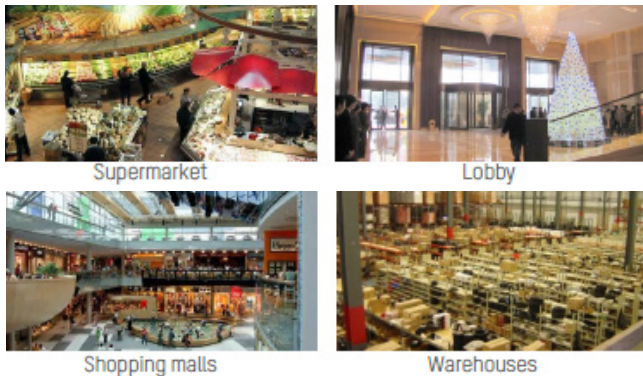
### ULTRA HD PERFORMANCE 6 MP Cameras

The 6 MP Ultra HD Camera Series provides a total resolution of 3072 x 2048 pixels at full frame rates, delivering spectacular images. With this expansive capability, one 6 MP camera covers the area that previously required several conventional cameras.



### ULTRA HD PERFORMANCE 4K Cameras

By building a total system – complete with cameras, NVRs, etc., – Hikvision strives to provide a system that is more helpful and more useful to its customers. The Hikvision 4K system, equipped with a variety of smart functions, satisfies the security industry's need for ultra-high resolution and smart surveillance.



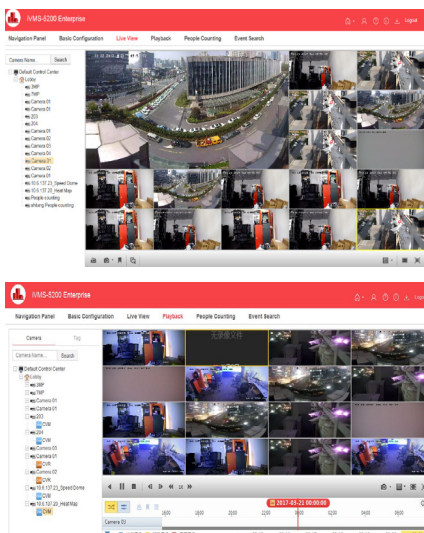
### LARGE INDOOR AREA SECURITY Panoramic Cameras

Hikvision Panoramic Cameras single-handedly capture images from every corner of a particular location while eliminating blind spots. They make a great choice for detailed coverage of large, unobstructed indoor areas commonly found in hotel lobbies, airports, shopping malls, parking lots, retail stores, offices, restaurants, classrooms, and the like.



### LARGE OUTDOOR AREA SECURITY Multi-Imager Panoramic

Hikvision's Multi-Imagers Camera Series is equipped with four or eight fixed imagers to provide a 180-degree or 360-degree panoramic horizontal view, one HD PTZ camera can provide highly detailed images. These ultra-low-light DarkFighter Cameras are able to capture high quality colored images, even in dim light environments. It's a very effective tool for wide-open area monitoring like city surveillance, parking lots, airports, town square, stadiums, gymnasiums, and much more.



### Live View

- Sub-stream/Mainstream
- Window Division and Full Screen
- PTZ Control

### Playback

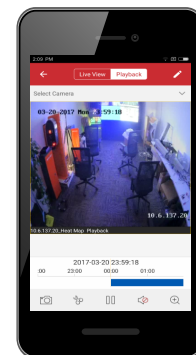
- Slow Forward/Fast Forward
- Window Division and Full Screen
- Playback by Tag

### Video Wall

- Video Wall Control
- Plan Management
- Alarm Triggered Video Wall Display

### Event Management

- Searching Video Events
- Searching Behavior Analysis Events
- Searching Alarm Input Events



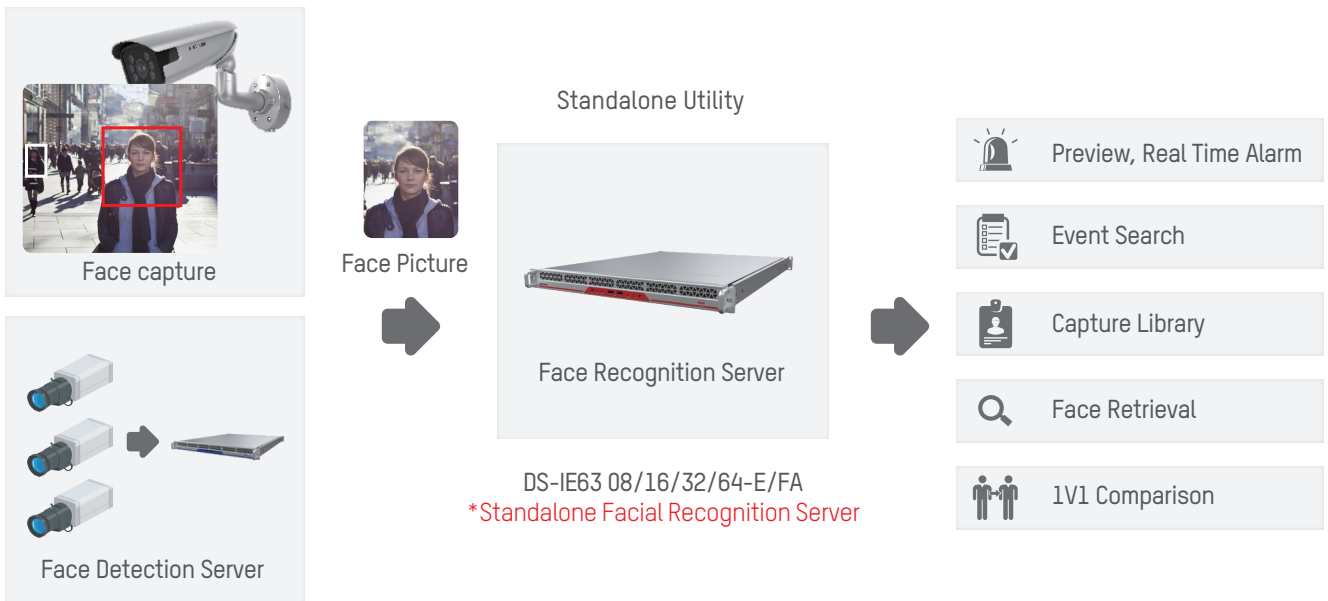
### Mobile APP

- Live View
- Playback



## ▶ VIDEO SURVEILLANCE FACIAL RECOGNITION

IP Cameras send images to NVRs. Then, based on the original facial information, the NVR itself performs a secondary analysis, building a data model with a deep learning algorithm for facial recognition.



- Face Recognition
- Face Capture
- NVR + GPU
- Real - time alarm
- Search people by faces
- Deep Learning

- Face Alarm: 4 channels of real-time alarm (32-ch IP cameras input)
- Face Lists: Up to 30,000 images



## ► BUSINESS INTELLIGENCE

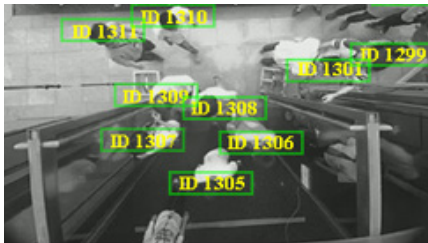
### PEOPLE COUNTING



### People Counting

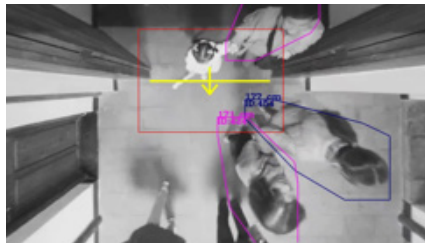
Identify peak hours and days so owners can assign staff accordingly.  
Can be used together with POS data to calculate Conversion Rate.

\*This subsystem requires customization for local adaption



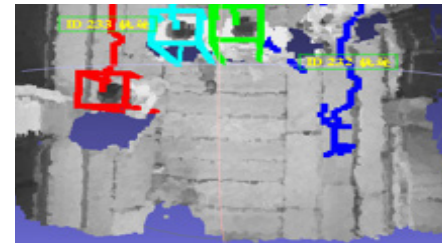
### Anti-Interference

- Shadow or other objects will not cause miscounting
- Camera can identify two person as long as there is space between two heads



### Height Filtering

Based on the height information in the 3D axis, the target height should be in the range of the human height, thus filtering the interference of the cart, baby carriage, etc.



### Loitering Filtering

The camera can focus on a target and track it until it disappears in the image, thus effectively filtering the repeated count of the loitering target.

## HEATMAP

Heatmap function is for convenient analysis of customer preferences, by

- Busy areas Indicated by colors
- Customer flow reports are easily generated

Make more informed business decisions, such as:

- Promotions
- Strategically add goods in key areas
- Advertise in critical locations
- Raise prices on advertising

*This feature works with other Hikvision cameras with heatmap function.*

*\*This subsystem requires customization for local adaption*

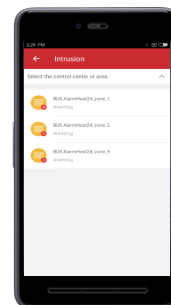
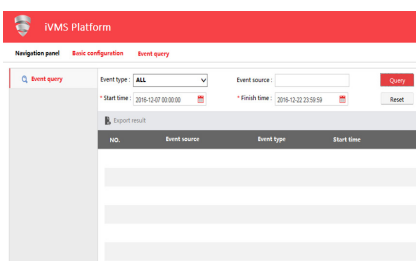
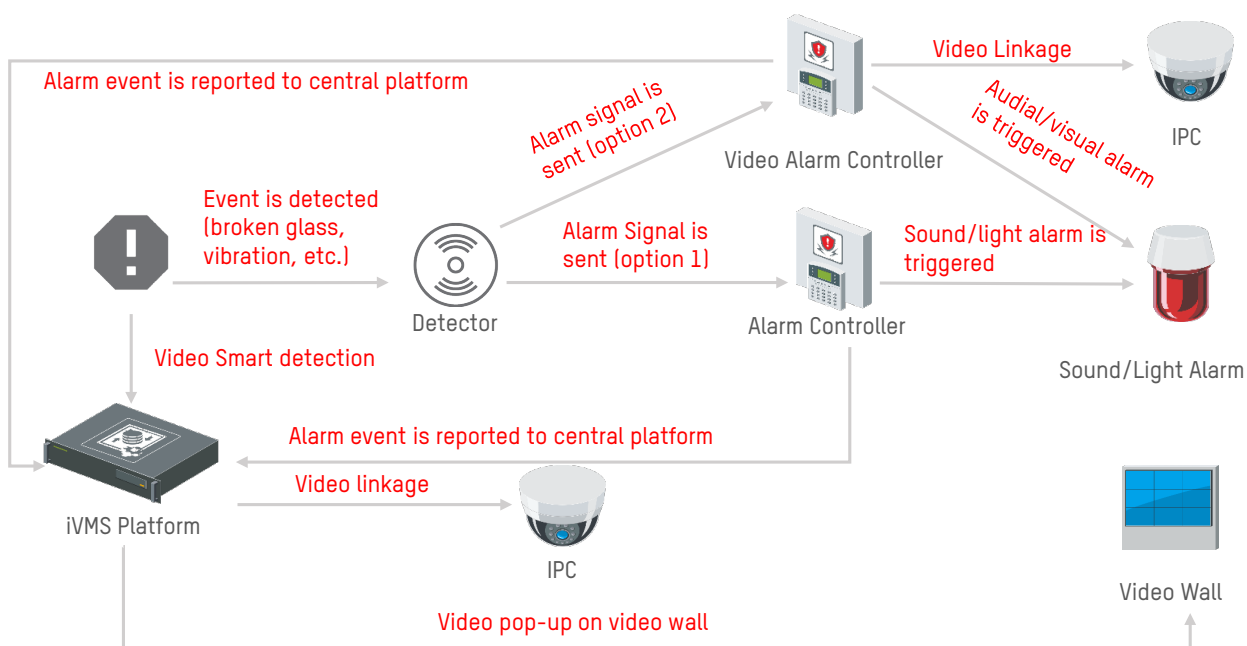


# SUBSYSTEMS

## ▶ INTRUSION ALARM



A security alarm is a system designed to detect intrusion – unauthorized entry – into a building or area. Security alarms are used in residential, commercial, industrial, and military properties for protection against burglary (theft) or property damage, as well as personal protection against intruders.



- Configure alarms and linkage for cameras, alarms and sensors
- Sort and filter real-time and past alarm information; check linked video and alarm details; export search results
- Search and filter past alarms; check related video and alarm details; export search results
- Access panic alarm stations
- Receive Smart alarm information from cameras and link to recording functions, capture images and upload to control center with alarm output

### Mobile App

- Partition Remote Control: Remotely implement arming or disarming for the partitions and view the status of partitions
- Zone Remote Control: Remotely implement bypass or bypass recovery for zones; view the status of zones

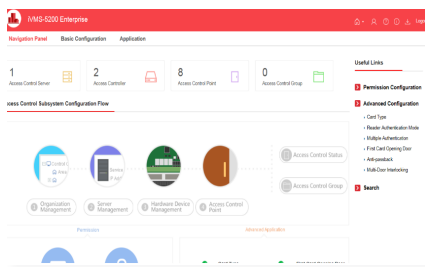
# SUBSYSTEMS

## ▶ ACCESS & ATTENDANCE

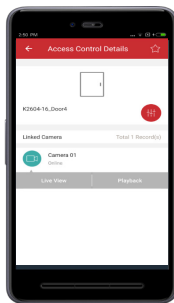


Whether people are coming in or going out, establish complete control with Hikvision's Access Control system. We provide features like tamper-proof credential systems, MIFARE and contactless card readers, and multiple-input access modes for secure identity confirmation. Various communication interfaces and protocols are available as well, including TCP/IP network interface and Wi-Fi standalone terminals, and customers' accounts always remain safe via RSA and AES encryptions.

## ▶ ACCESS CONTROL



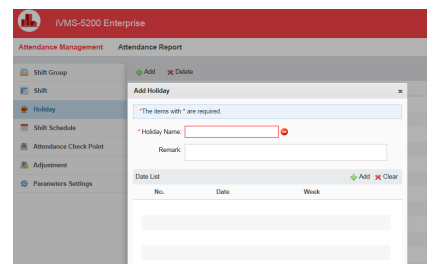
- Multiple authentication modes including cards, fingerprints, passwords, and finger veins
- Face authentication
- Advanced access control applications: Open doors by "first" card, anti-passback security, and interlocking
- Control doors through client or E-map and display door status on the platform
- Search access control events in real-time
- When the door is illegally opened, the alarm links to recording functions, images are captured and uploaded to control center with alarm output



### Mobile App

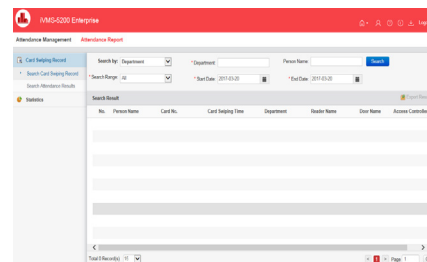
- Remote Control
- Linked Camera
- Favorites

## ▶ ATTENDANCE



### Shift and Holiday

- Shift Group Management
- Attendance Shift Management
- Attendance Rule Management
- Attendance Shift Schedule Management
- Attendance Holiday Management

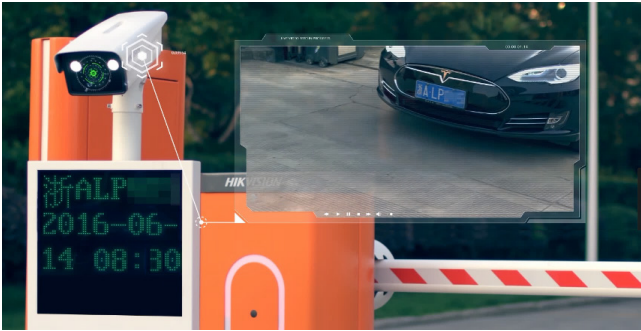


### Management

- Checkpoint Management
- Card Swiping Record Search
- Statistics

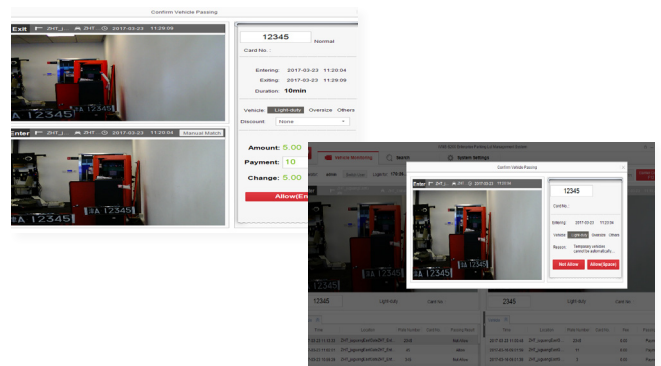
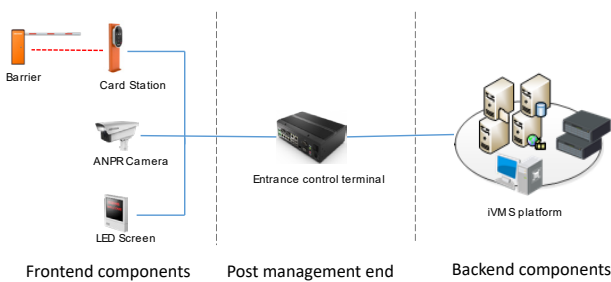
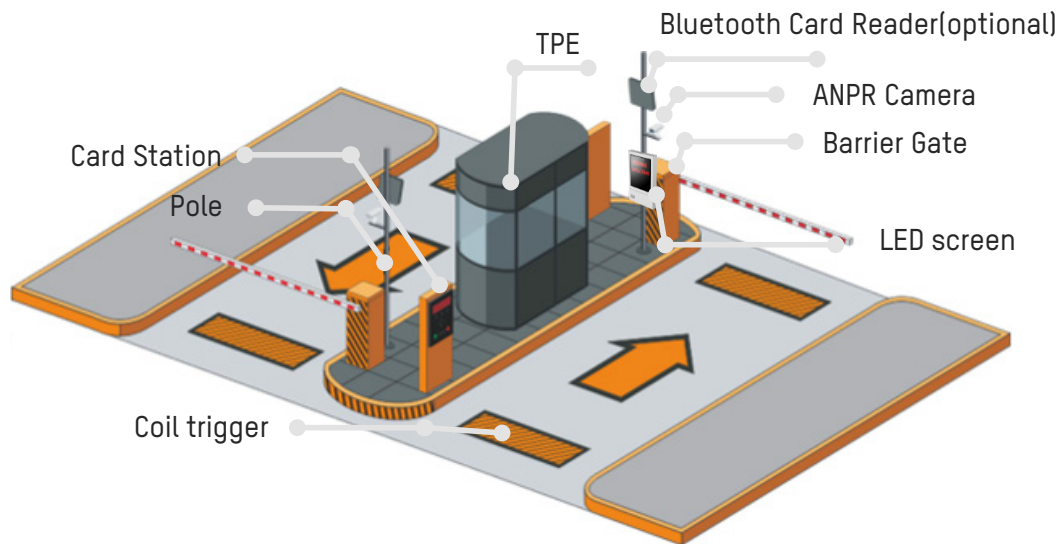
# SUBSYSTEMS

## ENTRIES & EXITS



For large parking lots, high customer flow may create parking entrance congestion. Effective parking safety and management are critical concerns

With their automatic number plate recognition algorithm, Hikvision ANPR cameras capture and recognize any vehicles' plate information and verify it based on definable black- or whitelists

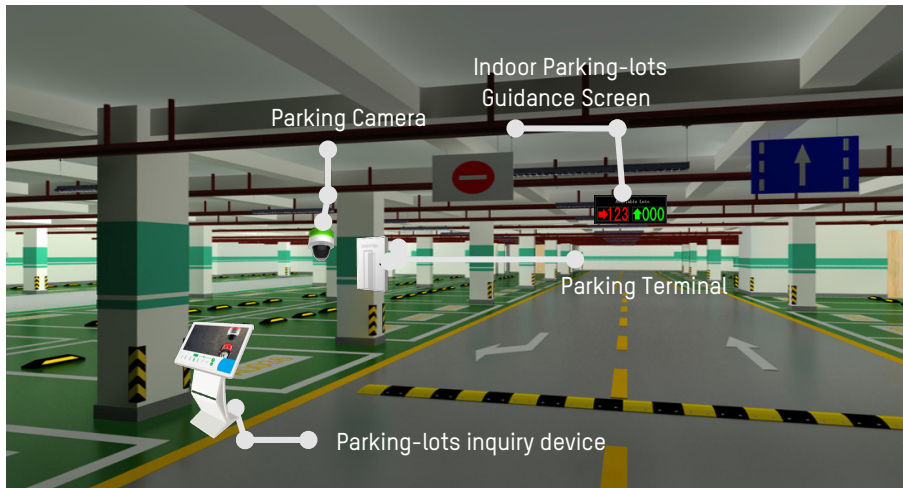


Note: Bluetooth Card Readers, Bluetooth Card Distribution devices, and Bluetooth Cards are optional; inclusion is based customer requirements.

- Allow registered vehicle to pass automatically
- Display information on LED screen
- Pay by cash
- Match license plate numbers manually
- Edit recognized plates
- Program voice prompt for parking fee
- Program voice prompts for card if no license plate
- Whitelist remains valid when system offline
- Authorize payment when system is offline

# SUBSYSTEMS

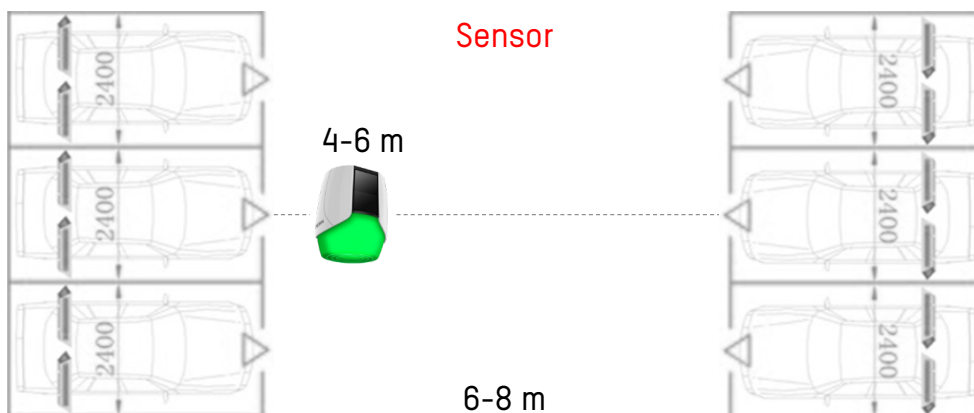
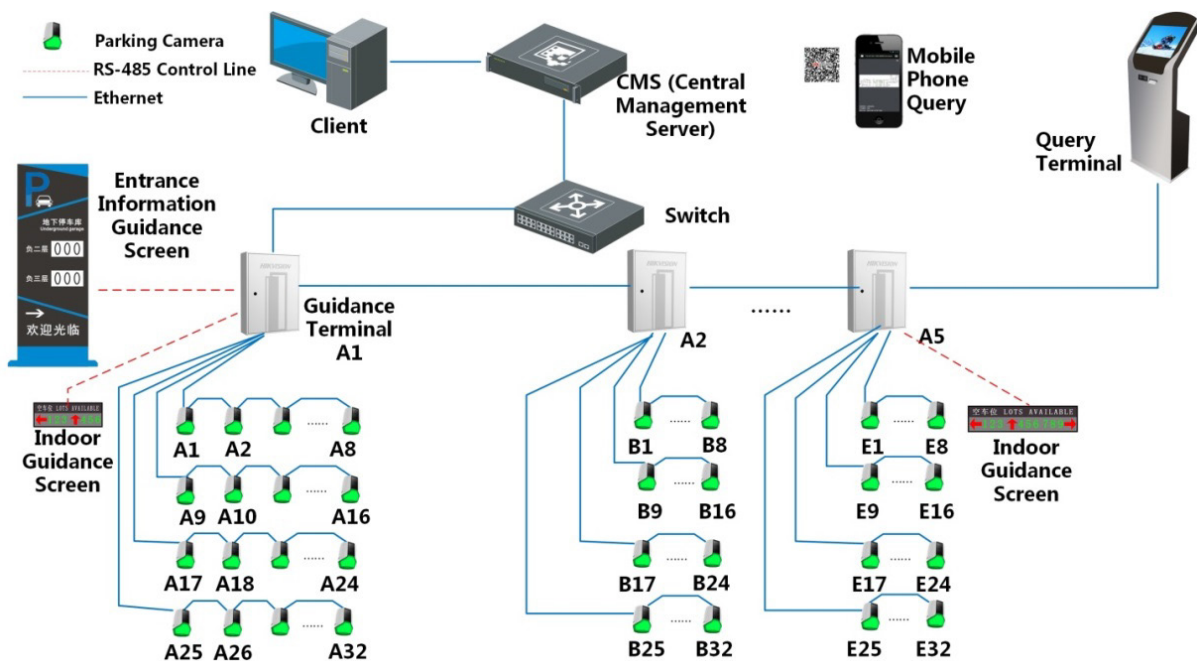
## ► PARKING GUIDANCE

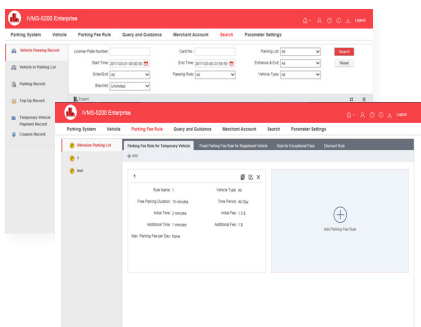
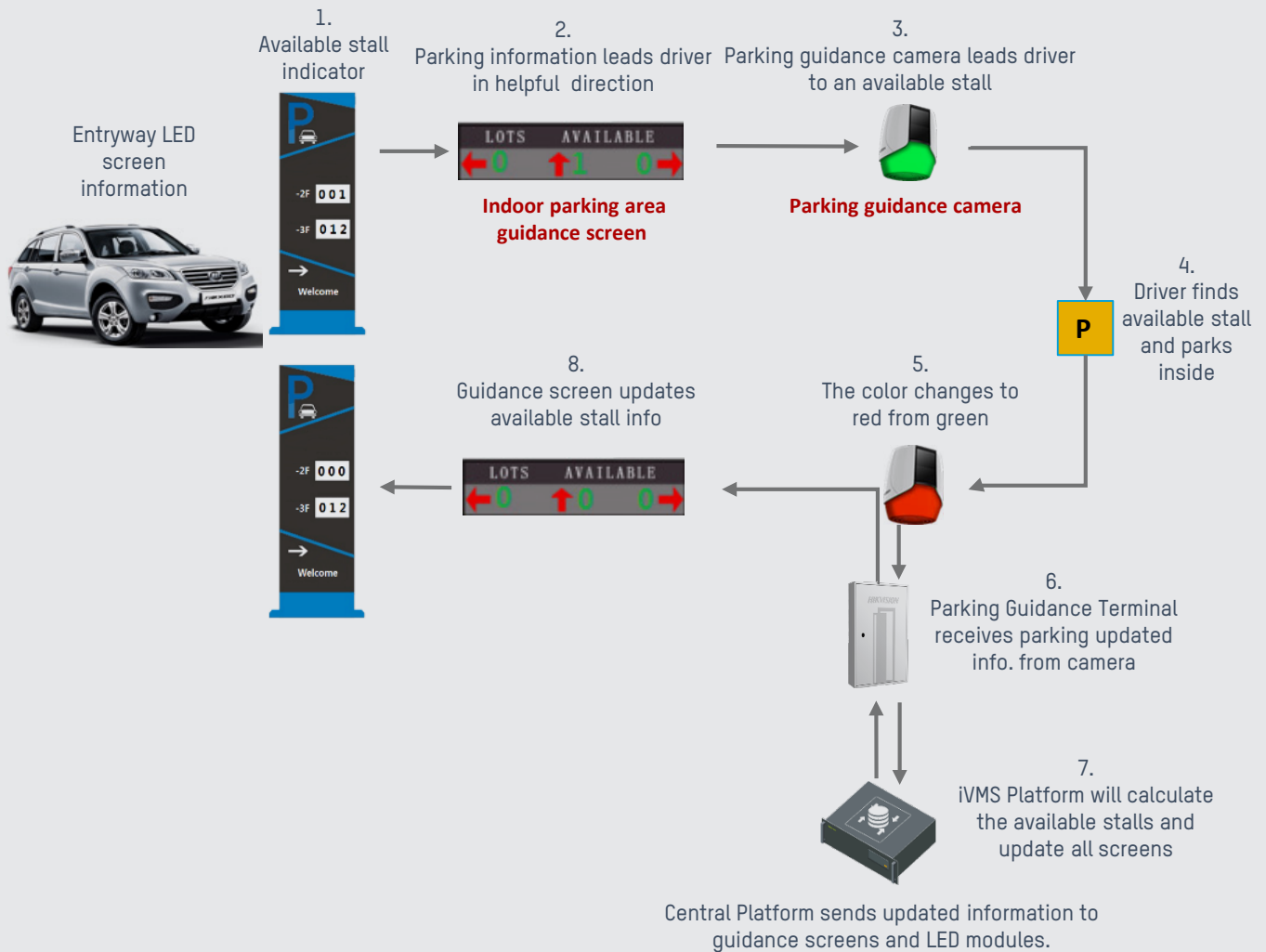


Intelligently manage parking lots, quickly guiding vehicles to empty parking spaces.

The Parking Subsystem features multiple guidance signals, Find My Car assistance, VIP-lot reminders, and parking records.

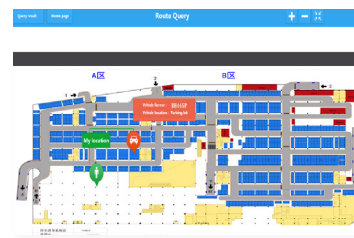
- Park cars more **QUICKLY**
- Find cars more **EASILY**





### Vehicle Management

- Search vehicles using various filters, such as time, license plate number, IC Card info., and more
- Search card info. including charge time, payment record
- Administrators also can search on EMU clients



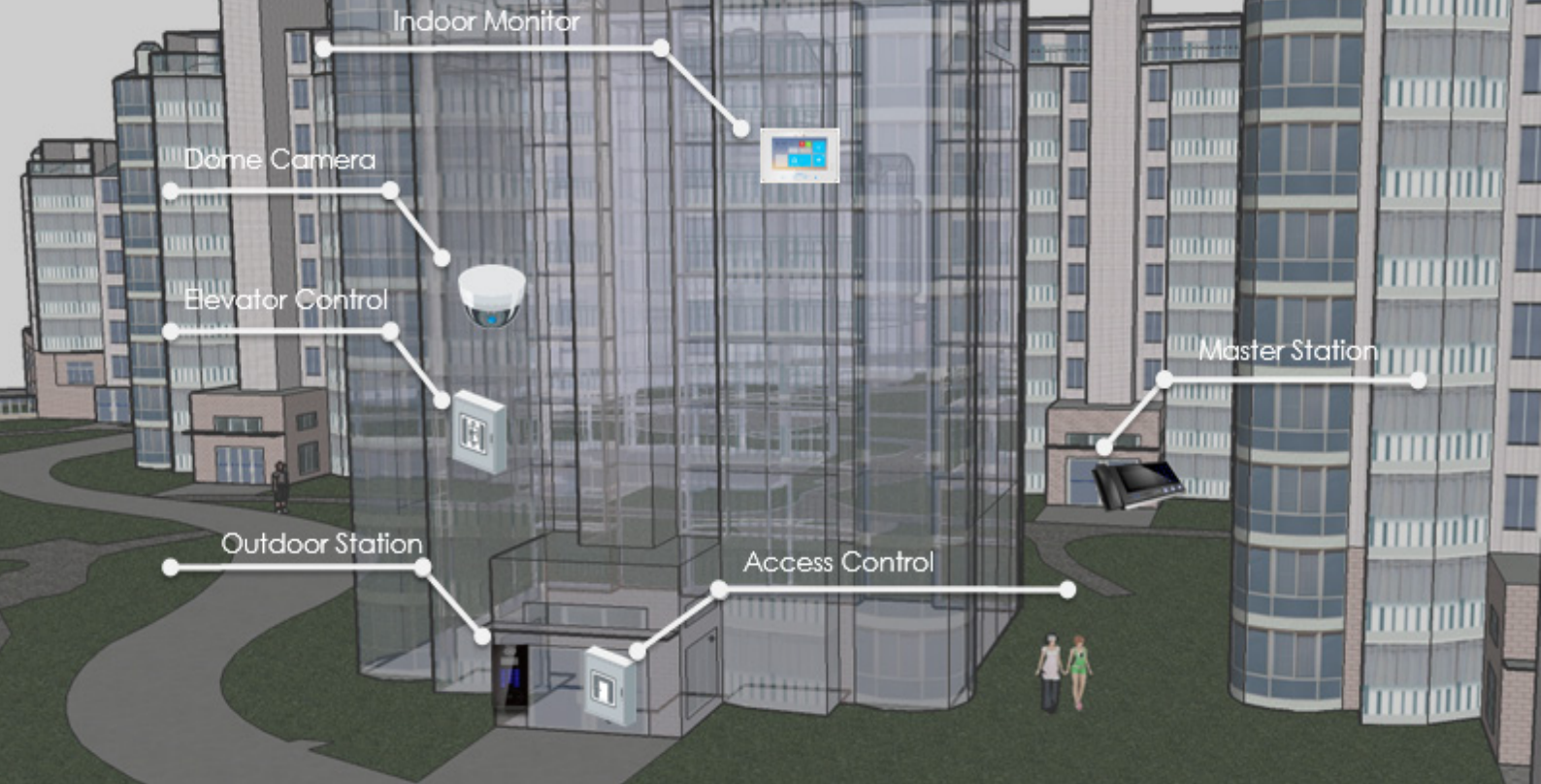
### Payment Policy Management Parking Status

- Import Parking Map to the system
- Map will show complete status of un/occupied stalls



### Location Query

- Search for vehicles on Query Machine
- Device will calculate the shortest route for customers
- Advertisements supported for revenue stream

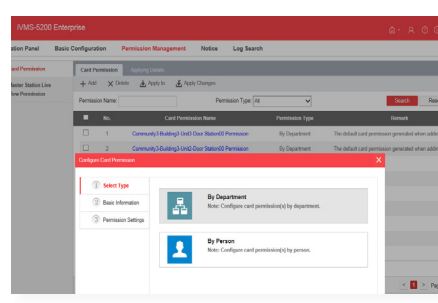


# SUBSYSTEMS

## ▶ VIDEO INTERCOM



Based on IP system architecture, Hikvision's video intercom system provides robust features and advanced extensibility. Our video intercom products integrate video surveillance, alarm systems, and access control systems, providing an all-around safe environment for your workplace and daily operations.



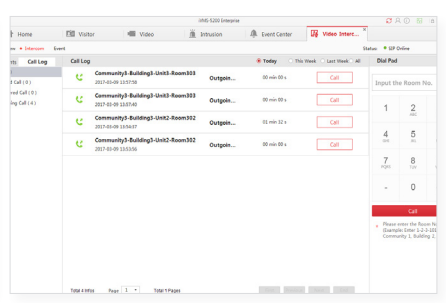
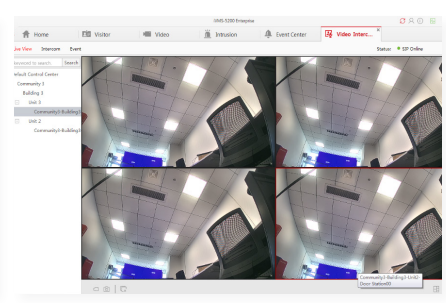
### PERMISSION MANAGEMENT

#### Live View

- Door station search and live view
- Remotely control door station, capture images and record video

#### Video Intercom

- Search, call, and remotely control indoor stations; initiate video intercom – all using an indoor station



### NOTIFICATIONS

#### Log Management

- Search and export logs, including video intercom and event logs

#### Events

- Display information, including event types, event levels, start/end times, etc., of video intercom events
- Call linked indoor stations and view live videos



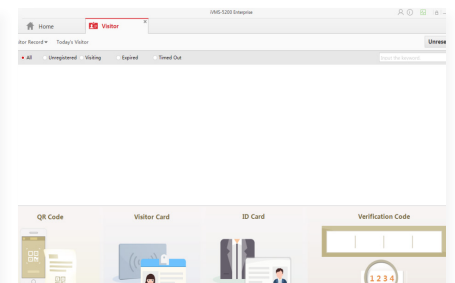
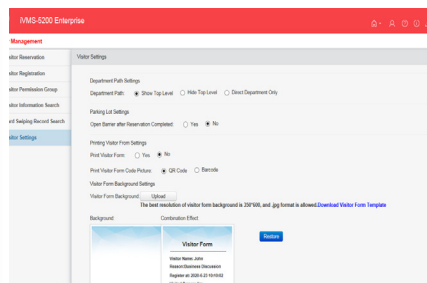
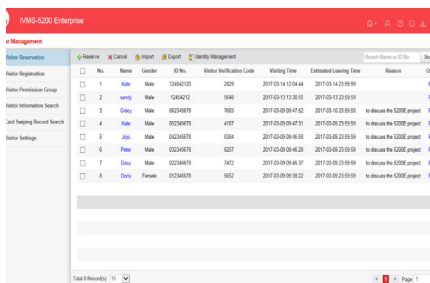
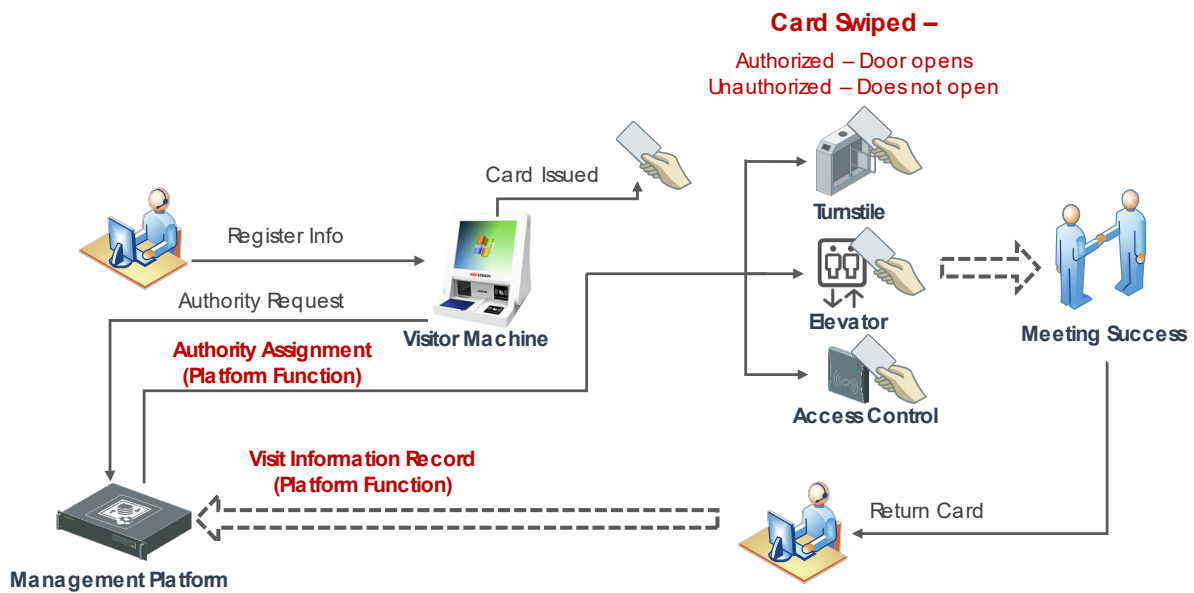
# SUBSYSTEMS

## ▶ VISITOR MANAGEMENT



- Make reservations by setting visitor name, gender, phone number, license plate number, ID no., person number, visited person, visiting time, departure time, and purpose
- Complete visitor registrations by issuing cards, assigning permissions for visitors, capturing visitor images, and more
- Add and delete visitor permission groups, including access control permissions, parking lot permissions, and door station permissions

*\*This subsystem requires local customization*



### Reservation & Registration

- Visitor Reservation
- Visitor Registration
- Visitor Permission Group(s)

### Searches & Settings

- Search: Visitor information, arrival time, departure time, visitor location information, card swipe record
- Visitor settings
- Printing Visitor Form Settings: QR codes and barcodes

### System Linkage

- Link to parking subsystem and elevator control subsystem

# SUBSYSTEMS

## ► ELEVATOR CONTROL

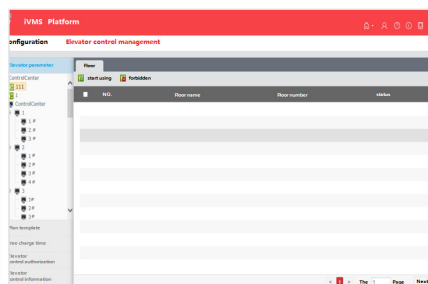
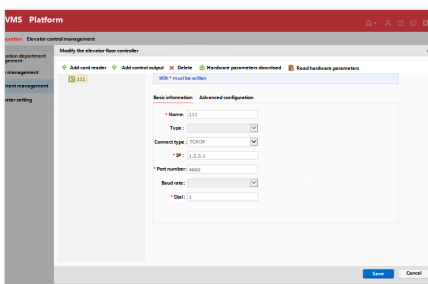
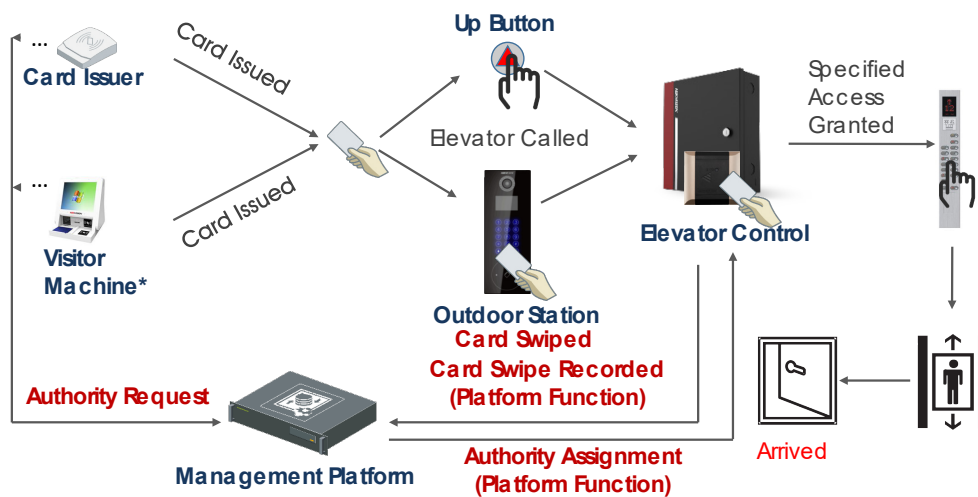


Card issuer or visitor machine issues cards with specified level of clearance. Visitor can call the elevator. Upon entering the elevator, card is swiped, and authorized levels can be accessed.

### Digital Signage

- Size: 22", 32", 55" (65", 70", 84", 98" customization)
- Windows OS
- C/S structure, B/S structure, Touch sensitive

*\*Note: No matching management software or platform integration, only local or 3rd-party media distribution software is supported.*



- Organization directory
- Elevator register
- Server management
- Floor authorizations
- Authority information
- Reports of elevator events exported
- Operating time setting



# SUBSYSTEMS

## ► STORAGE AND MONITOR

### VIDEO-WALL DISPLAY UNIT LCD/DLP/LED

#### LCD:

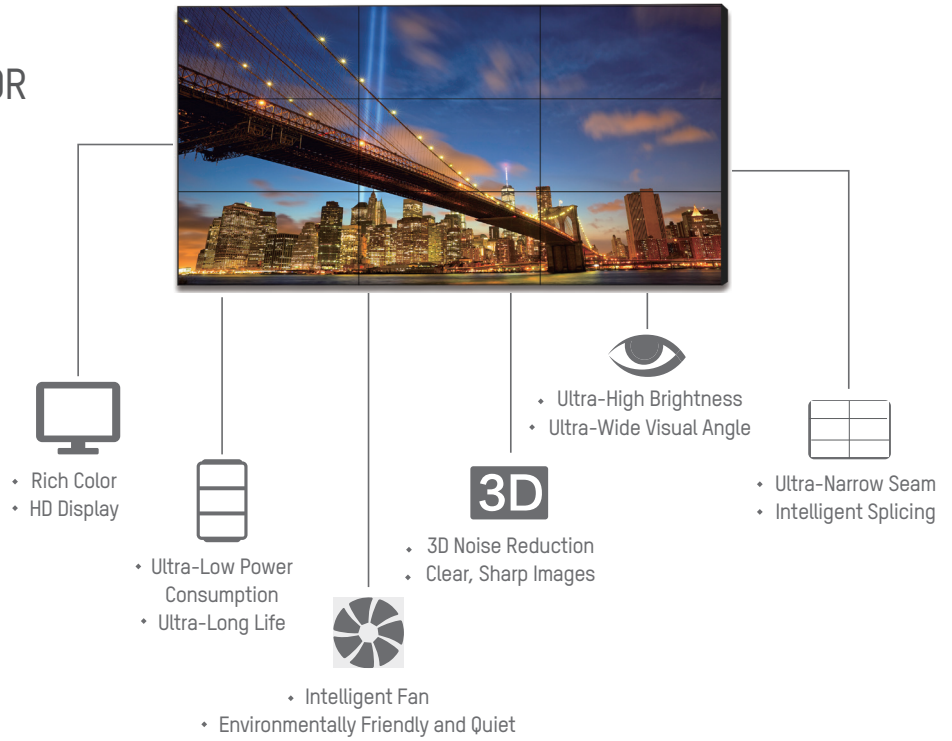
DS-2046NL-B, DS-2046NH-B,  
DS-2046NL-C, DS-2046NH-C,  
DS-2055NL-B, DS-2055NH-B

#### DLP:

DS-D1050EH, DS-D1060EH,  
DS-D1067EH, DS-D1080EH,  
DS-D1070EF

#### LED:

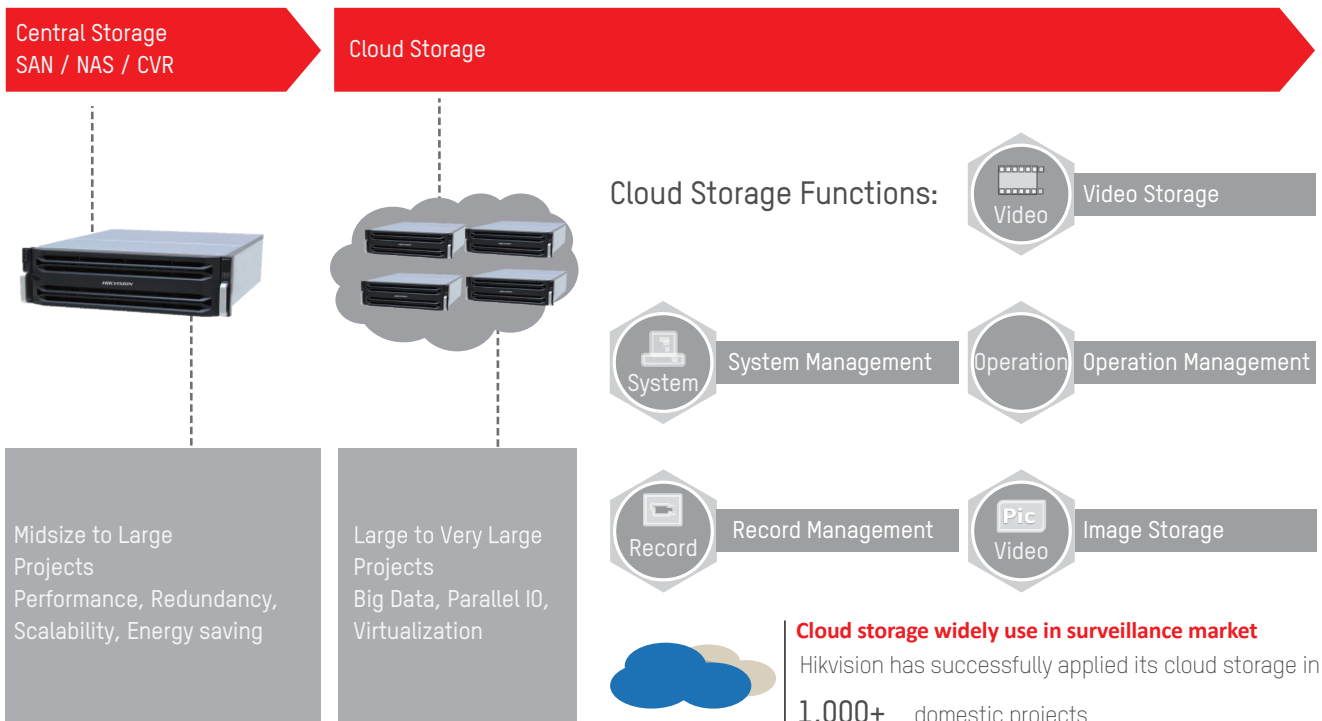
DS-D4012FI-EL, DS-D4014FI-GL,  
DS-D4018FI



# PRODUCT SHOWCASE

## ► CONTROL CENTER

### Network Storage





Storage Server



Modularized design and hot plugging for easy maintenance



Double controller & power module for data safety



Supports CVR mode for better return on investment



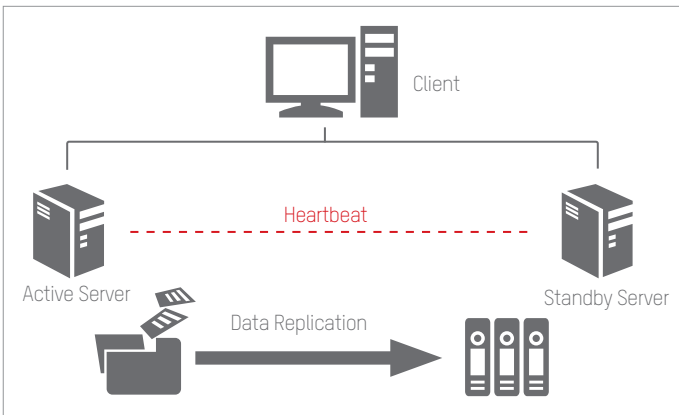
Decoder



Video Wall Controller



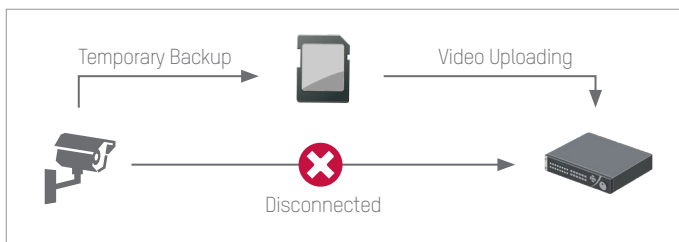
TV Wall



**Data Safety**

**Server Redundancy Design**

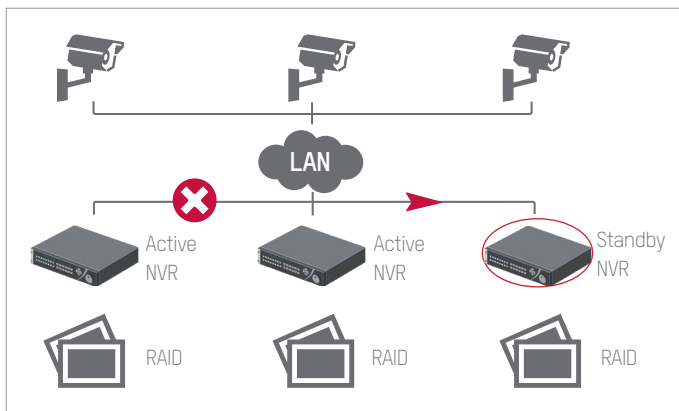
- Active & standby servers
- "Heartbeat" function automatically backs up users' information if one server is interrupted
- Ensures users' live view and playback in case of failover



**Data Safety**

**Auto Network Recovery (ANR)**

- Auto backup if network connection is interrupted
- Data moves from SD card to back-end device while network connection is restored
- We recommended using Hikvision brand Micro SD card for ANR storage



**Data Safety**

**RAID & N+1 Failover**

- **Single-spot storage backup:** Multi-RAID supported by embedded NVR and Storage Server
- **Multi-spot storage backup:** When any active NVR is out of service, the standby NVR can take over recording automatically

Video Surveillance



**DARKFIGHTER**

DS-2CD4026FWD (-A)(P)  
 DS-2CD4A/626FWD-IZ(H)(S)  
 DS-2CD4526FWD-IZ(H)  
 DS-2CD4126FWD-IZ  
 DS-2DF6223-AEL  
 DS-2CD4B/D26FWD-IZ(S)  
 DS-2CD4C26FWD-(A)(P)  
 DarkFighter Low-Light  
 Cameras

- Ultra-low-light Performance
- Full HD 1080p, up to 60 fps
- 120 dB WDR
- Low-light HD Lens
- Full Smart feature set



**LIGHTFIGHTER**

DS-2CD4025FWD-(A)(P)  
 DS-2CD4A/625FWD-IZ(H)(S)  
 DS-2CD4525FWD-IZ (H)  
 DS-2CD4125FWD-IZ  
 DS-2DF6236V-AEL  
 DS-2DF8236IV-AEL(W)  
 LightFighter WDR Cameras

- High, 2 MP resolution
- Full HD 1080p images, up to 60 fps
- 140 dB WDR
- Full Smart feature set
- Up to 8–32 mm Motorized Vari-focal Lens with Smart Focus
- Advanced low-light performance with up to 500 feet (150 m) IR Arrays



DS-2CD41/665F-IZ  
 DS-2CD45/A65F-IZ (H)  
 DS-2CD4065F-(A)(P)  
 6 MP Ultra HD Performance  
 Cameras

- 3072 x 2048 Maximum resolution
- Full Smart feature set
- HD Lens with consistent aperture
- Super DWDR



DS-2CD4085FWD-AP  
 DS-2CD4185FWD-IZ  
 DS-2CD4585FWD-IZH  
 DS-2CD4A85FWD-IZSH  
 DS-2CD4685FWD-IZHS  
 4K Ultra HD Performance  
 Cameras

- High, 4096 x 2160 resolution
- Full Smart feature set
- 2.8–12 mm Motorized VF lens
- Up to 230 feet (70 m) IR
- Audio / alarm IO



DS-2CD63C/62F-I  
 DS-2CD6332FWD-I  
 Large Indoor Area Security  
 Panoramic Cameras

- High resolution images – up to 3072 x 2048
- 360-Degree panoramic or multiple, de-warped view
- IR range of up to 50 feet (15 m)
- Audio / alarm IO
- On-board storage



DS-2DP1636-D  
 DS-2DP0818/1636Z-D  
 DS-2CD6986CM-(A)(H)  
 Large Outdoor Area Security  
 Multi-Imager Panoramic

- DarkFighter imaging sensors
- On-board stitching for panoramic view
- 8 MP or 16 MP high resolution
- IP66
- True WDR

PanoVu

## PRODUCT SHOWCASE



**DS-96128/256NI-I16/I24(H)**  
Embedded H.265+ 4K Super  
NVR

- 576/768Mbps Bit Rate input Max (up to 128/256 IP cameras Input)
- Up to 12MP resolution recording
- Support H.265+/H.265/H.264+/H.264 video formats
- 20-ch(/H,68-ch) 1080P decoding capability
- HDMI output at up to 4K resolution
- Up to 16/24 SATA interfaces, up to 8 TB for each
- HDD,4 Gigabit optical interfaces
- Redundant power supply to ensure system stability
- HDD hot swapping with RAID 0/1/5/6/10
- One LCD screen optional , mini SAS optional



**DS-9616/32/64NI-I8/I16**  
Embedded H.265+ 4K  
2U/3U NVR

- 256/320 Mbps Bit Rate Input Max(up to 16/32/64-ch IP cameras input)
- Third-party network cameras supported
- Up to 12MP resolution recording
- Support H.265+/H.265/H.264+ /MPEG4 video formats
- 2-ch HDMI and 2-ch VGA outputs interfaces provided,
- 1 HDMI output at up to 4K resolution
- 8/16 SATA, HDD hot swapping , 1 eSATA,2 USB2.0, 1 USB3.0
- Support RAID0,1,5,6,10
- Hot spare working mode



**IDS-9632NXI-I8/8S(16S)**  
DeepinMind NVR

- Maximum 512/768 Mbps bitrate Input
- Supports 3rd party network cameras
- Up to 12 MP resolution recording
- 4k HDMI output, 1080p VGA output
- Supports H.264/H.264+, H.265 video formats
- Supports RAID 0, 1, 5, 6, 10, 50, 60, and JBOD
- Supports redundant power supply
- I16: 16x SATA; I24: 24x SATA



**DS-IE63 08/16/32/64-E/FA**  
Face Recognition Server

- Powerful GPU
- Low-power dissipation
- Deep Learning algorithm achieves higher accuracy
- 8 / 16 / 32 / 64 channels
- Up to 80 pic/sec. modeling ability
- Up to 32 couples of 1V1 face comparison

## Alarm System



**DS-19A08/16-BN**  
**DS-19S08/16N-04S/4PGW**  
Control Panel

- 8/16-Zone Input
- PSTN + Wired Network (TCP/IP)
- Supports 32 Remote Controllers
- 8 External Keypads
- WCDMA
- POE



**DS-19S08T-04S(/GE/GLT/GW)**  
Control Panel

- 8-Zone Input
- PSTN + Wired Network (TCP/IP)
- 4-ch. Analog Video Input
- 2 x 6 TB HDD
- Supports 32 Remote Controllers
- 16 External Keypads
- 3G EVDO / 4G LTE / 3G WCDMA



**DS-19S08/16N-04S**  
**DS-19S08/16N-04S/GW**  
Control Panel

- 8/16 Local Zones
- Support PSTN + TCP/IP
- 4-ch. Digital Video Input
- 2 x 6 TB HDD
- Supports 8 External Keypads
- 32 Remote Controllers
- WCDMA



**DS-19K00-Y**  
Remote Controller

- RF: 868Mhz



**DS-PK00M-LCD**  
LCD Alarm Keypad

- LCD
- Supports RF remote controller
- Supports MIFARE cards



**DS-PK08/16-LED**  
LED Alarm Keypad

- 8- or 16-ch. LED
- Supports RF remote controller

## Access & Attendance



**DS-K2601/02/04**  
Access Controller

- Accessible Card Reader: 2/4/4 Wiegand readers & 2/4/8 RS485 readers
- Input interface: 4 Alarm Input, 1/2/4 Door Magnetic, 1/2/4 Door Switch, 2/4/8 Case Input, 1 Tamper-proof
- Output interface: 1/2/4 Door Switch Relay, 1 Alarm Relay
- Uplink Communication Interface: TCP/IP Network Interface and RS-485 Interface
- Storage with 100,000-card information and 300,000 access control events



**DS-K1107E/EK(M/MK)**  
**DS-K1101/04M(K)**  
**DS-K1102M(K)/E(K)**  
**DS-K1200EF/MF**  
Card (or Fingerprint) Reader

- Support EM / Mifare 1 card
- Support Fingerprint
- RS485 and Wiegand (W26 / W34) protocol

## PRODUCT SHOWCASE

### Access



**DS-K7P01/02**  
**DS-K7P05/06**  
**DS-K7PEB**  
Exit Button

- Aluminum alloy panel with sandblast, metal button
- Already passed 500 thousand times aging test
- NO/NC/COM Contact
- 3A@36VDC Max



**DS-K1T105M/E(-C)**  
Standalone Access  
Control Terminal

- 2.8-inch LCD TFT Screen
- 16-Key keyboard and doorbell
- Built-in MIFARE/EM Card reader module
- 2-Megapixel camera (optional)
- Supports Wi-Fi function
- 100,000-card storage and 300,000 access control events



**DS-K1T200MF/EF(-C)**  
Standalone Access Control  
Terminal

- 2.8-inch LCD -TFT Screen
- 16-Key keyboard and doorbell
- Built-in MIFARE/EM Card reader module
- 2-Megapixel camera (optional)
- Supports Wi-Fi function
- 100,000-card storage and 300,000 access control events

### Entrance & Exit



**DS-TCG225**  
LPR Camera Unit

- 2 MP, 1920 x 1080
- CMOS, 1/3", 25 fps
- 5.2-13 mm motorized lens
- Embedded LED lights (2)
- built-in TF Card, support whitelist and data storage, offline control gate
- Supports loop-triggering or video triggering
- Built-in ANPR algorithm
- Dedicated to entrances and exits



**EVU-2136-ITIR**  
LPR Camera Unit

- 1/3" CCD sensor
- 1360 x 1024 resolution with real-time video
- 3 high performance LEDs
- 2.7-12 mm vari-focal lens
- Detection distance: 3.5-15 m
- Supports relay output for vehicle barrier control
- Supports loop-triggering or video triggering
- 5 x RS485 interfaces
- Built-in ANPR algorithm



**DS-TPE100(1T/2T/4T)**  
Terminal

- 4 10/100 Mbps Ethernet ports
- 2 1000 Mbps Ethernet ports
- 3 RS232 ports
- 2 RS485 ports
- 4 USB 2.0 ports
- 2 I/O ports
- 4 relays ports
- 1 VGA output, 1 Audio I/O, 1 HDMI output
- 1 TB / 2 TB / 4 TB HDD included





**DS-TRI400-4**  
Bluetooth Card Reader

- Range from 3m to 30m
- Supports Wiegand and RS485 output



**DS-TRD400-4**  
Bluetooth Card Distribution Device

- Supports USB, W626, RS232 protocols to distribute card



**DS-TRC400-4**  
Bluetooth Card

- 433 MHz
- Range from 3m to 30m



**DS-TME401/02-TRL**  
Entrance / Exit Controller (Via Card)

- Connects up to 4 IPC
- Distributes up to 350 cards
- Supports offline charging
- Speaker, LED display
- Car detection
- Takes and reads cards
- Audio chat
- Barrier / gate control



**DS-TME401/02-TL-S**  
Entrance / Exit Controller (Economical)

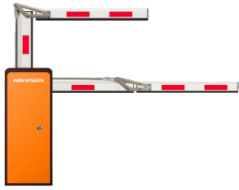
- HDD not included
- Supports chat
- No card output, paper tickets
- Supports LED / audio reminders
- Supports offline charging



**DS-TMG400-(HL)/(HR)/(ML)/(MR)/(LL)/(LR)**  
Barrier Gate – Straight-arm

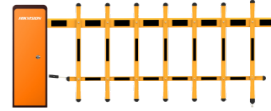
- Barrier type: middle speed
- Lift-up speed: 3s
- Arm form: 3m / 4m / 6m, straight-arm
- Colour: red
- Arm moving direction: rightward / leftward
- Input power supply: 220V 50Hz
- Anti-failing

## PRODUCT SHOWCASE



**DS-TMG401-(LL)(LR)(ML)(MR)**  
**(1.5+1.5)(2+2)**  
Barrier Gate – 90° Crank-arm

- Barrier type: middle speed
- Lift-up speed: 3s
- Arm form: 1.5+1.5m / 2+2m / 2.5+2.5m, 90°crank-arm
- Colour: red
- Arm moving direction: rightward / leftward
- Input power supply: 220V 50Hz
- Anti-failing



**DS-TMG403-(LL)(LR)**  
**(ML)(MR)**  
Barrier Gate – Fence

- Barrier type: low speed
- Lift-up speed: 6s
- Arm form: 4m / 5m, fence
- Colour: red
- Arm moving direction: rightward / leftward
- Input power supply: 220V 50Hz
- Anti-failing

## Parking Guidance



**DS-TCP145 /**  
**345(D) (-K)(-KB)(-B)**  
Guidance Camera

- 1.3MP 1280x720 resolution,
- 4/6mm fixed lens optional,
- Integrated indicator light: up to 7 colors,
- 2x RJ45 interfaces,
- 1x power supply interface, support PoE extension.
- -K: 3x external indicator light interfaces
- -B: support iBeacon protocol
- -KB: support 3x external indicator light interfaces and iBeacon protocol
- TCP345D: dual-lens, support up to 6 parking lots



**DS-TV6400**  
Parking Space Indicator  
Light

- LED light supports up to 8 colors for lot status indication



**DS-TPM400-**  
**P/3T/6T/12T/18T**  
Guidance Terminal

- Built-in ANPR algorithm,
- Up to 6 3.5-inch HDD slots,
- 16x 100M RJ45 interfaces,
- 8x PoE interfaces,
- 4x 1000M RJ45 interfaces,
- Audio I/O: 1/1,
- Alarm I/O: 3/3,
- 2x RS485 interfaces,
- 1x optical interface.



**DS-TPT327-3**  
Query Machine

- Finds parked vehicles
- Displays the parking space info, quickest route to vehicle, and a parking space image
- Previews parking space video
- Plans a parking route
- Searches by license plate number, parking area, time, etc.



**DS-TVL121-3/6/9-6D**  
Indoor Guidance Screen

- Indoor
- Two-color display
- Single row
- 3/6/9 Digits
- RS-485 transmission
- Network Transmission



**DS-KH6310**  
Indoor Monitor  
(Entry-level)

- SOC Processor
- 7-Inch Colorful TFT LCD
- 800 x 480 Display resolution,
- Capacitive Touch Screen, Physical Button
- Built-in Omnidirectional Microphone and Loudspeaker
- 1 RJ-45 10/100 Mbps Self-Adaptive Ethernet Interface
- 1 RS-485 Half-Duplex Port
- 8-ch Alarm Input Sensor
- Single I/O output
- 24 VDC / 12 VDC
- 217 x 142 x 26 mm (8.5 x 5.6 x 1.0")



**DS-KD8102-V**  
Apartment Outdoor Station  
(High-end)

- High-Performance Embedded SOC Processor
- 1.3 MP HD Colorful Camera, H.264, CMOS Low-light Illumination
- 3.5-Inch Colorful TFT LCD
- 480 x 320 Display resolution
- Capacitive Touch Keypad
- Built-in Omnidirectional Microphone and Loudspeaker
- Built-in IC Card Reader
- IR Detection
- Door Magnetic Alarm, Tampering Alarm
- 1 RJ-45 10/100/1000 Mbps Self-Adaptive Ethernet Interface
- 1 RS-485 Half-Duplex Port
- 8 I/O input and 4 I/O output
- Wiegand Port
- USB 2.0 port, Supporting U-Disk
- Stainless panel
- 12 VDC, IP65
- 418 x 145 x 61 mm (16.5 x 5.7 x 2.4")

## Video Intercom



**DS-KH8300-T**  
Indoor Monitor  
(High-end)

- High-performance embedded SOC processor
- 7-Inch Colorful TFT LCD
- 1024 x 600 Display resolution
- Capacitive Touch Screen, Touch Key
- Built-in Omnidirectional Microphone and Loudspeaker
- 1 RJ-45 10/100 Mbps Self-Adaptive Ethernet Interface
- 1 RS-485 Half-Duplex Port
- 8-ch Alarm Input Sensor
- 2 I/O outputs
- TF Card, Support Max. 32GB
- 24 VDC / 12 VDC
- 217 x 142 x 26 mm (8.5 x 5.6 x 1.0")



**DS-KH6210-L**  
Indoor Monitor  
(Entry-level)

- High-performance embedded SOC processor
- 7-Inch Colorful TFT LCD
- 800 x 480 Display resolution
- Physical Button
- Built-in Omnidirectional Microphone and Loudspeaker
- 1 RJ-45 10/100 Mbps Self-Adaptive Ethernet Interface
- 1 RS-485 Half-Duplex Port
- 2-ch Alarm Input Sensor
- Single I/O output
- 24 VDC / 12 VDC
- 217 x 142 x 26 mm (8.5 x 5.6 x 1.0")



**DS-KD8002-VM**  
Apartment Outdoor Station  
(Entry-level)

- High-Performance Embedded SOC Processor
- 1.3 MP HD Colorful Camera, H.264, CMOS Low-light Illumination
- 3.5-Inch Colorful TFT LCD
- 480 x 320 Display resolution
- Physical Keypad
- Built-in Omnidirectional Microphone and Loudspeaker
- Built-in IC Card Reader
- Door Magnetic Alarm, Tampering Alarm
- 1 RJ-45 10/100/1000 Mbps Self-Adaptive Ethernet Interface
- 1 RS-485 Half-Duplex Port
- 8 I/O input and 4 I/O output
- Wiegand Port
- USB 2.0 port, Supporting U-Disk
- Aluminum Alloy panel
- 12 VDC, IP65
- 418 x 145 x 61 mm (16.5 x 5.7 x 2.4")

## PRODUCT SHOWCASE



**DS-KV8102-IP(-IM)**  
**DS-KV8202-IM**  
**DS-KV8402-IM**  
Villa Outdoor Station

- High-Performance Embedded SOC Processor
- 1.3 MP HD Colorful Camera, H.264, CMOS Low-light Illumination
- Built-in Omnidirectional Microphone and Loudspeaker
- Built-in IC Card Reader
- Exit Button for Opening the Door
- IR Supplement
- Door Magnetic Alarm, Tampering Alarm
- RJ-45 10/100 Mbps Self-Adaptive Ethernet Interface
- RS-485 Half-Duplex Port
- 4 I/O input and 1 I/O output
- 1/2/4 Indoor station access
- Aluminum Alloy / Plastic material
- 24 VDC / 12 VDC, IP65
- 182 x 100 x 33 mm (7.17 x 3.94 x 1.30")



**DS-KM8301**  
Master Station

- High-Performance Embedded SOC Processor
- CMOS 0.3 MP, H.264
- Main Stream: 1280 x 720, Sub-Stream: 704 x 576
- 7-Inch Colorful TFT LCD, 1024 x 600
- Capacitive Touch Screen, Touch Key, Physical Button
- Built-in Omnidirectional Microphone and Loudspeaker
- External Handset
- RJ-45 10/100/1000 Mbps Self-Adaptive Ethernet Interface
- 2 RS-485 Half-Duplex Port
- USB Interface for Inserting U-Disk
- 4 On-Off Inputs and 2 On-Off Outputs, 2 Relay Outputs
- Plastic Material
- 12 VDC
- 436 x 215 x 67 mm (17.2 x 8.5 x 2.6")



**DS-KAD606**  
**DS-KAD612**  
Distributor

- 8 RJ-45 interfaces, including 6 adaptive 10/100 Mbps LAN interfaces
- Supports network cable powering and 2 adaptive 10/100 Mbps cascading LAN interfaces
- 6/12 adaptive 10/100 Mbps LAN interfaces supports provide 24 VDC for video intercom devices
- IEEE 802.3, IEEE 802.3u, IEEE 802.3x
- Storing and forwarding function
- Over 1000,000-hour MTBF

## Elevator Control



**DS-K2210**  
Elevator Controller

- Supports 2 Wiegand or RS485 card reader
- Supports 3 control modules groups, each group supports 8 DS-K2M0016A
- Controls up to 128 floors
- Uplink Interface TCP/IP
- Downlink Interface RS-485 and Wiegand
- 20,000 legitimate card and 50,000 credit card records
- RTC inside
- Power Supply: 12 VDC  $\pm$  15%
- Operating Temperature -40 to 70°C (-40 to 158°F)
- Dimension 235 x 284 x 90 mm (without case)



**DS-K2M0016A**  
Linkage Module

- Communicates with controller via RS-485
- Controls up to 16 floors
- 32-Bit CPU Processor
- 2 RS485 Interfaces
- 2 Alarm Inputs
- 16 Relay Outputs
- 1 Buzzer
- Operating Temperature -40- 70°C (-40 to 158°F)
- Power Supply 12 V DC  $\pm$  15%
- Dimension 235 x 284 x 90 mm (without case)



**DS-K1106M/C**  
Card Reader

- Supports RS485 and Wiegand (w26, w34) protocols
- A group of LED indicators (green and red) for displaying power, communication, and card reading status
- Built-in buzzer for status indication
- Supports MIFARE card reader, including card no. or content reading
- Supports CPU card reading, including card serial no. and content reading

Control Center



**DS-A81016S**  
Single-Controller 16 HDD  
Slots Network Storage  
Device

- IP-SAN and Central video recording support
- Up to 16/24 HDDs, with up to 6 TB capacity on each disk and cascading extension support
- RAID 0, 1, 3, 5, 10, 50 and HDD hot-swapping supported
- Modularization and redundant power design for high reliability



**DS-A82024D**  
Double-Controller 24 HDD  
Slots Network Storage  
Device

- IP-SAN and Central video recording support
- Double controller and redundant power – Automatic redundancy if failure occurs
- Disk detection, repair, and RAID optimization
- Low-power design
- Massive storage space: 4U chassis with 24 HDDs and cascading extension support



**DS-6901/04/08/10/12/16UDI**  
Ultra High Definition Decoder

- Decoding capacity: 12MP at 20 fps: 2 channels  
8MP at 30 fps: 4 channels  
5MP at 30 fps: 6 channel  
3MP at 30 fps: 10 channel  
1080p at 30 fps: 16 channel
- Provides HDMI (adaptable to DVI-D) and BNC output interfaces
- Up to 4K (3840 x 2160 @ 30 Hz) via HDMI output interfaces (only for even interface)
- H.265+/H.265, H.264+/H.264, MPEG4 and MJPEG video compressions
- G.722, G711A, G726, G711U, MPEG2-L2, and AAC audio compressions



**DS-C10S-S11/22/41/E**  
Video Wall Controller

- Up to 184-ch. analog, or 92-ch. TVI or 92-ch. HDMI / DVI / VGA input
- Up to 72-ch. HDMI / DVI / VGA output
- Up to 72-piece screen jointing
- Built-in Matrix
- Supports joint, division and display
- Base map
- Cross-window video roaming
- Supports hot plugging
- Redundant power supply



SYNERGIZING SECURITY  
**SMART INTEGRATED SECURITY**  
 SYSTEMS SOLUTION

Distributed by



**HIKVISION®**

**Headquarters**

No.555 Qianmo Road, Binjiang District,  
 Hangzhou 310051, China  
 T +86-571-8807-5998  
[overseasbusiness@hikvision.com](mailto:overseasbusiness@hikvision.com)

**Hikvision USA**  
 T +1-909-895-0400  
[sales.usa@hikvision.com](mailto:sales.usa@hikvision.com)

**Hikvision Italy**  
 T +39-0438-6902  
[info.it@hikvision.com](mailto:info.it@hikvision.com)

**Hikvision Singapore**  
 T +65-6684-4718  
[sg@hikvision.com](mailto:sg@hikvision.com)

**Hikvision Africa**  
 Tel: +27 (10) 0351172  
[sale.africa@hikvision.com](mailto:sale.africa@hikvision.com)

**Hikvision Europe**  
 T +31-23-55-42-770  
[info.eu@hikvision.com](mailto:info.eu@hikvision.com)

**Hikvision France**  
 T +33(0)1-85-330-450  
[info.fr@hikvision.com](mailto:info.fr@hikvision.com)

**Hikvision Oceania**  
 T +61-2-8599-4233  
[salesau@hikvision.com](mailto:salesau@hikvision.com)

**Hikvision Turkey**  
 T +90-216-521-70-70  
[sales.tr@hikvision.com](mailto:sales.tr@hikvision.com)

**Hikvision Middle East**  
 T +971-4-8816086  
[salesme@hikvision.com](mailto:salesme@hikvision.com)

**Hikvision Spain**  
 T +34-91-737-16-55  
[info.es@hikvision.com](mailto:info.es@hikvision.com)

**Hikvision Canada**  
 T +1-909-895-0400  
[sales.usa@hikvision.com](mailto:sales.usa@hikvision.com)

**Hikvision Kazakhstan**  
 T +7-727-9730667  
[nikia.panfilov@hikvision.ru](mailto:nikia.panfilov@hikvision.ru)

**Hikvision Russia**  
 T +7-495-669-67-99  
[saleru@hikvision.com](mailto:saleru@hikvision.com)

**Hikvision Poland**  
 T +48-22-460-01-50  
[poland@hikvision.com](mailto:poland@hikvision.com)

**Hikvision Korea**  
 T +82-31-731-8841  
[sales.korea@hikvision.com](mailto:sales.korea@hikvision.com)

**Hikvision Hong Kong**  
 T +852-2151-1761  
[info.hk@hikvision.com](mailto:info.hk@hikvision.com)

**Hikvision India**  
 T +91-22-28469900  
[sales@pramahikvision.com](mailto:sales@pramahikvision.com)

**Hikvision UK**  
 T +01628-902140  
[support.uk@hikvision.com](mailto:support.uk@hikvision.com)

**Hikvision Brazil**  
 T +55 11 3318-0050  
[Latam.support@hikvision.com](mailto:Latam.support@hikvision.com)

Follow us on social media to get the latest product and solution information



[www.hikvision.com](http://www.hikvision.com)

