

Distributed by



**HIKVISION®**

**Headquarters**

No.555 Qianmo Road, Binjiang District,  
Hangzhou 310051, China  
T +86-571-8807-5998  
overseasbusiness@hikvision.com

**Hikvision USA**  
T +1-909-895-0400  
sales.usa@hikvision.com

**Hikvision Europe**  
T +31-23-5542770  
sales.eu@hikvision.com

**Hikvision UK & Ireland**  
T +01628-902140  
sales.uk@hikvision.com

**Hikvision UAE**  
T +971-4-4432090  
salesme@hikvision.com

**Hikvision Russia**  
T +7-495-669-67-99  
saleru@hikvision.com

**Hikvision Australia**  
T +61-2-8599-4233  
salesau@hikvision.com

**Hikvision Italy**  
T +39-0438-6902  
info.it@hikvision.com

**Hikvision South Africa**  
Tel: +27 (0) 0351172  
sale.africa@hikvision.com

**Hikvision Singapore**  
T +65-6684-4718  
sg@hikvision.com

**Hikvision Korea**  
T +82-(0)31-731-8817  
sales.korea@hikvision.com

**Hikvision India**  
T +91-22-28469900  
sales@pramahikvision.com

**Hikvision Brazil**  
T +55 11 3318-0050  
Latam.support@hikvision.com

**Hikvision France**  
T +33(0)1-85-330-450  
info.fr@hikvision.com

**Hikvision Spain**  
T +34-91-737-16-55  
info.es@hikvision.com

**Hikvision Poland**  
T +48-22-460-01-50  
info.pl@hikvision.com

**Hikvision Canada**  
T +1-866-200-6690  
sales.canada@hikvision.com

**Hikvision Turkey**  
T +90 (216)521 7070- 7074  
sales.tr@hikvision.com

**Hikvision Kazakhstan**  
T +7-727-9730667  
nikia.panfilov@hikvision.ru

**Hikvision Tashkent**  
T +99-87-1238-9438  
uzb@hikvision.ru

**Hikvision Indonesia**  
T +62-21-2933759  
Sales.Indonesia@hikvision.com

**Hikvision Thailand**  
T +662-275-9949  
sales.thailand@hikvision.com

**Hikvision Malaysia**  
T +601-7652-2413  
sales.my@hikvision.com

**Hikvision Vietnam**  
T +84-974270888  
sales.vt@hikvision.com

**Hikvision Hong Kong**  
T +852-2151-1761  
info.hk@hikvision.com

**Hikvision Colombia**  
sales.colombia@hikvision.com



Follow us on social media to get the latest product and solution information



Hikvision



HikvisionHQ



HikvisionHQ



Hikvision\_Global



Hikvision Corporate Channel



hikvisionhq

www.hikvision.com



# ULTRA SERIES IP CAMERAS- 3-SERIES NETWORK CAMERAS PRODUCT CATALOG

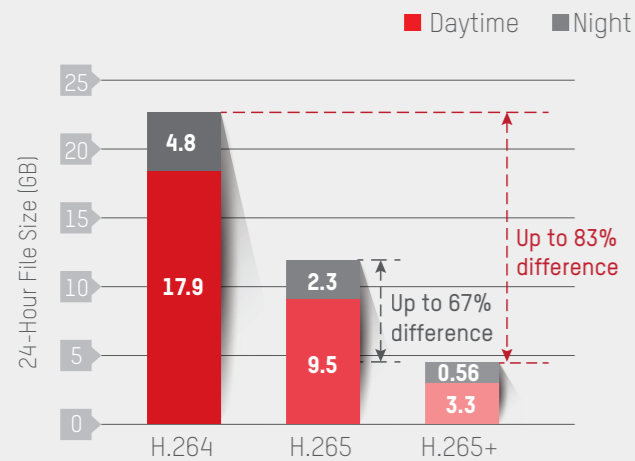
**HIKVISION®**

# 1

## Cutting Costs, Extending Value

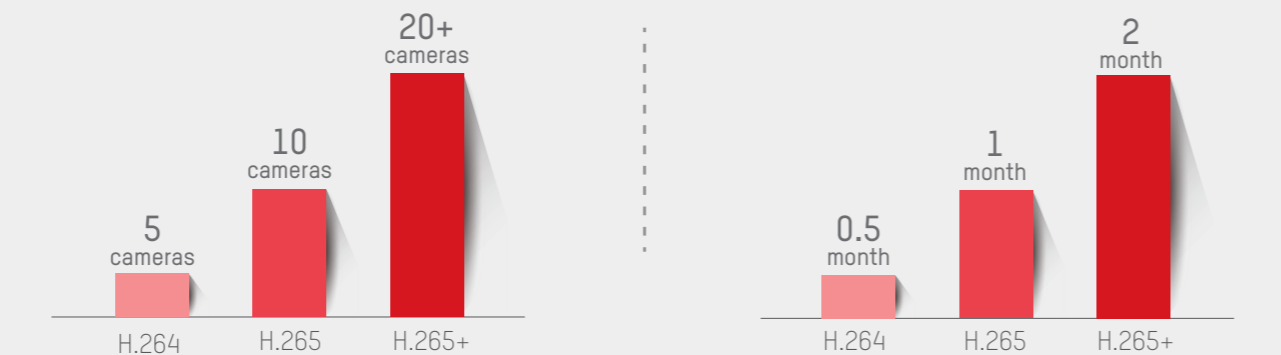
The H.265+ high-efficiency codec not only reduces bandwidth requirements but also frees up storage space, improving overall compression performance by up to 83%. H.265+ can support twice the number of security cameras of H.265. Or, with the same hardware setup, H.265+ can double the amount of video recording of H.265. The improvement is even more surprising when compared against H.264.

## H.265+



24-Hour recording file size (GB) comparing H.264, H.265, and H.265+

\*Data was tested in a common scene; for reference only.



20 MB Broadband Network

Eight 2-MP cameras

5TB HDDs

# 2

## More Details, Ultimate Clarity

Recently, ultra-high-definition surveillance cameras marked the beginning of the security industry's own 4K era. However, 4K technology has yet to be implemented widely, mainly because of its tremendous bandwidth and data storage requirements. But now, Hikvision's H.265+ codec optimizes data efficiency and makes 4K video surveillance possible. Every pixel comes to life with vivid clarity.

## 4K

A 4K Ultra HD camera offers ultra-HD images and four times more details than a 2 MP camera.



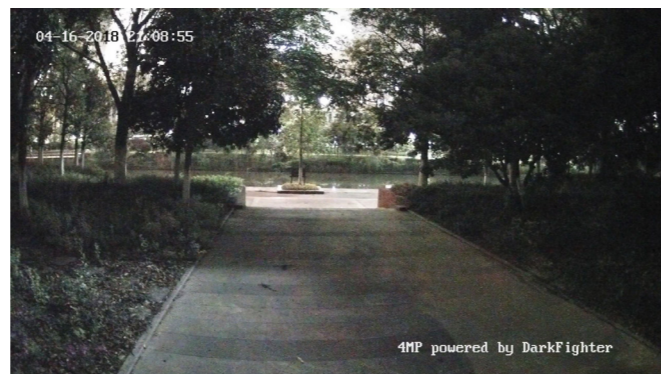
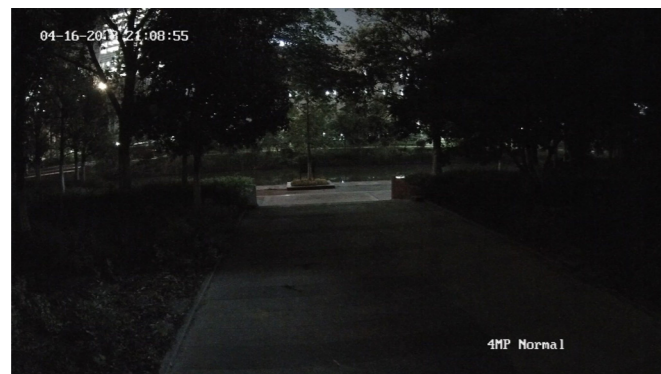
The coverage of a 4K Ultra HD camera is four times that of a 2 MP camera.



## Powered by DarkFighter

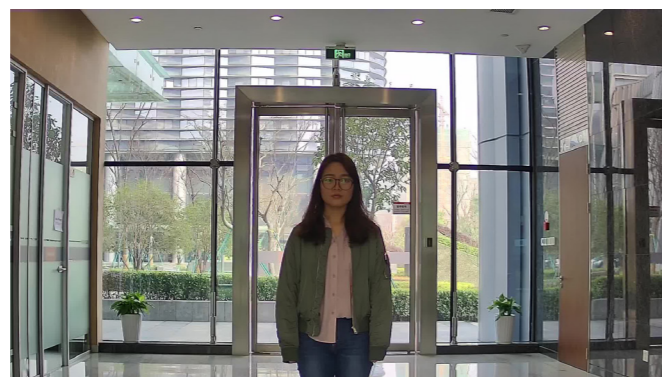
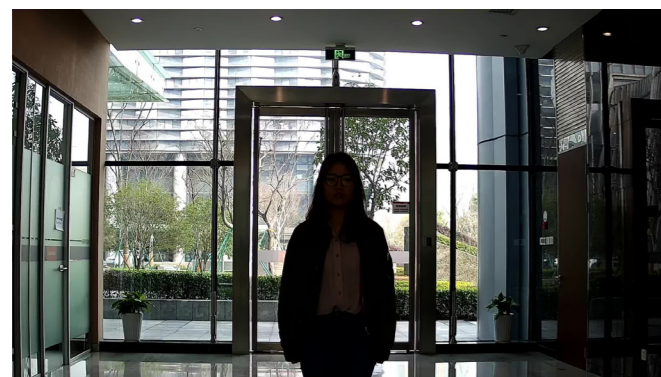
### Colorful Imaging, Even in Low Light

Powered-by-DarkFighter Low-light Technology – Featuring powerful lenses with an ultra-large iris, advanced sensors, and an optimized imaging algorithm, Hikvision’s 3-Series Network Cameras provide crisp clear images rich in detail for excellent night surveillance.



### Clear Imaging even with Strong Backlight

Wide Dynamic Range (WDR) technology enables cameras to maintain image fidelity without detail loss when the subject is captured with harsh backlighting. The 120 dB WDR of the 3-Series Network Cameras ensures accurate on-screen color and detail even in backlit environments, where conventional cameras would capture only obscured silhouettes.



## True WDR



## Smart Detection

### A Smarter System with More VCA Functions

In order to improve monitoring efficiency, the 3-Series Network Cameras provide VCA functions to SMB security systems. Staff can set alarms to be triggered when an event happens and replay footage capturing line-crossing, intrusion, faces, and scene changes. Object removal and unattended baggage can also be detected.



Line crossing detection



Intrusion detection



Face detection



Unattended baggage detection



Object removal detection



Scene change detection

Note: “Scene change detection” is a behavior analysis function. If the camera’s viewing direction changes without authorization, the camera can detect the difference and trigger an alarm.



### Certified by Common Criteria

The DS-2CD3XX5G0 models of the 3-Series Network Cameras are certified by Common Criteria (CC), which is an international set of guidelines and specifications developed for evaluating information security products, specifically to ensure them to meet an agreed-upon security standard for government deployments. Common Criteria is more formally called “Common Criteria for Information Technology Security Evaluation”.



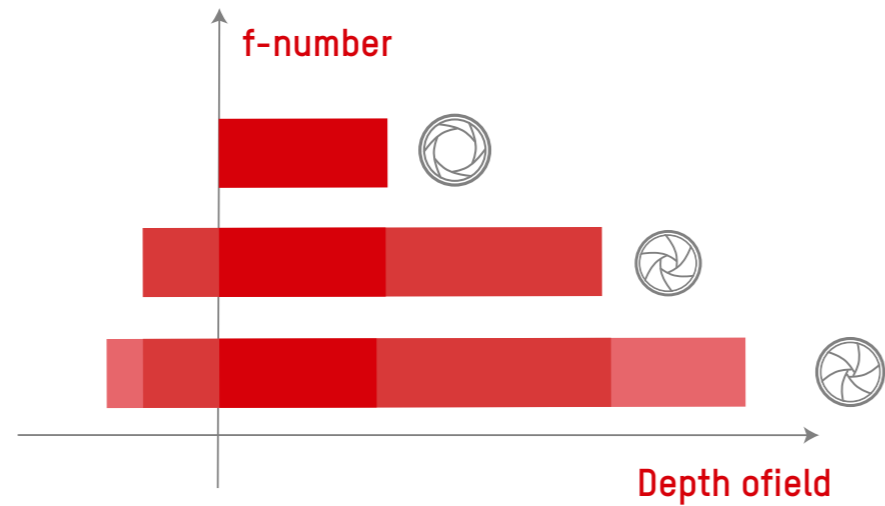
## Common Criteria




## Auto Iris


### Better Image Performance by Auto Iris






As we all know, both the fixed iris and the auto-iris are commonly used in video surveillance cameras. A fixed iris in indoor scenes with stable lighting works quite well. However, the auto-iris is more suitable for the outdoors, where lighting conditions change throughout the day. During the brightest hours of daylight, the auto-iris gets smaller and thereby improves the depth of field.








- Auto iris (all vari-focal models)
- Up to 4K
- Excellent low-light performance via powered-by-DarkFighter technology
- 4 behavior analyses, 1 exception detection, and face detection
- 3 Streams (2 MP@60fps)
- Some models support CC network security authentication

Model	 <b>NEW</b>	 <b>NEW</b>	 <b>NEW</b>	 <b>NEW</b>	 <b>NEW</b>
Image Sensor	1/2.8" Progressive Scan CMOS	1/2.5" Progressive Scan CMOS	1/2" Progressive Scan CMOS	CMOS	1/2.5" Progressive Scan CMOS
Max. Resolution	1920 × 1080	2688 × 1520	3840 × 2160	1920 × 1080	2688 × 1520
Video Compression	H.265 / H.264 / MJPEG / H.264+ / H.265+	H.265 / H.264 / MJPEG / H.264+ / H.265+	H.265 / H.264 / MJPEG / H.264+ / H.265+	H.265 / H.264 / MJPEG / H.264+ / H.265+	H.265 / H.264 / MJPEG / H.264+ / H.265+
Min. Illumination	Color: 0.009 lux @ (F1.6, AGC ON)	Color: 0.014 lux @ (F1.6, AGC ON)	Color: 0.014 lux @ (F1.6, AGC ON)	Color: 0.009 lux @ (F1.6, AGC ON)	Color: 0.014 lux @ (F1.6, AGC ON)
WDR	120 dB	120 dB	120 dB	120 dB	120 dB
Lens	2.8 mm, 4 mm, 6 mm	2.8 mm, 4 mm, 6 mm	2.8 mm, 4 mm, 6 mm	2.8 mm, 4 mm, 6 mm	2.8 mm, 4 mm, 6 mm
FOV	2.8 mm: Horizontal FOV: 108° 4 mm: Horizontal FOV: 86.4° 6 mm: Horizontal FOV: 52°	2.8 mm: Horizontal FOV: 109°, vertical FOV: 60°, diagonal FOV: 131° 4 mm: Horizontal FOV: 88°, vertical FOV: 46°, diagonal FOV: 105° 6 mm: Horizontal FOV: 53°, vertical FOV: 30°, diagonal FOV: 61°	2.8 mm: Horizontal FOV: 102°, vertical FOV: 55°, diagonal FOV: 120° 4 mm: Horizontal FOV: 78°, vertical FOV: 43°, diagonal FOV: 92° 6 mm: Horizontal FOV: 50°, vertical FOV: 27°, diagonal FOV: 59°	2.8 mm: Horizontal FOV: 108° 4 mm: Horizontal FOV: 86.4° 6 mm: Horizontal FOV: 52°	2.8 mm: Horizontal FOV: 109°, vertical FOV: 60°, diagonal FOV: 131° 4 mm: Horizontal FOV: 88°, vertical FOV: 46°, diagonal FOV: 105° 6 mm: Horizontal FOV: 53°, vertical FOV: 30°, diagonal FOV: 61°
Max. IR Range	Up to 40 m	Up to 40 m	Up to 40 m	Up to 40 m	Up to 40 m
VCA	Line crossing detection, intrusion detection, unattended baggage detection, object removal detection, face detection, scene change detection	Line crossing detection, intrusion detection, unattended baggage detection, object removal detection, face detection, scene change detection	Line crossing detection, intrusion detection, unattended baggage detection, object removal detection, face detection, scene change detection	Line crossing detection, intrusion detection, unattended baggage detection, object removal detection, face detection, scene change detection	Line crossing detection, intrusion detection, unattended baggage detection, object removal detection, face detection, scene change detection
Frame Rate	50 Hz: 50 fps (1920 × 1080, 1280 × 960, 1280 × 720) 60 Hz: 60 fps (1920 × 1080, 1280 × 960, 1280 × 720)	50 Hz: 25 fps (2688 × 1520, 2304 × 1296, 1920 × 1080, 1280 × 720) 60 Hz: 30 fps (2688 × 1520, 2304 × 1296, 1920 × 1080)	50 Hz: 20 fps (3840 × 2160), 25 fps (3072 × 1728, 2560 × 1440, 1920 × 1080, 1280 × 720) 60 Hz: 20 fps (3840 × 2160), 30 fps (3072 × 1728, 2560 × 1440, 1920 × 1080, 1280 × 720)	50 Hz: 50 fps (1920 × 1080, 1280 × 960, 1280 × 720) 60 Hz: 60 fps (1920 × 1080, 1280 × 960, 1280 × 720)	50 Hz: 25 fps (2688 × 1520, 2304 × 1296, 1920 × 1080) 60 Hz: 30 fps (2688 × 1520, 2304 × 1296, 1920 × 1080)
Multi-Streaming	3	3	3	3	3
Protection Level	IP67, IK10	IP67, IK10	IP67, IK10	IP67, IK10	IP67, IK10
Angle Adjustment	Pan: 0° to 360°, tilt: 0° to 90°, rotate: 0° to 360°	Pan: 0° to 360°, tilt: 0° to 90°, rotate: 0° to 360°	Pan: 0° to 360°, tilt: 0° to 90°, rotate: 0° to 360°	Pan: 0° to 355°, tilt: 0° to 75°, rotate: 0° to 355°	Pan: 0° to 355°, tilt: 0° to 75°, rotate: 0° to 355°
Operating Temperature	-30 °C to +60 °C (-22 °F to +140 °F)	-30 °C to +60 °C (-22 °F to +140 °F)	-30 °C to +60 °C (-22 °F to +140 °F)	-30 °C to +60 °C (-22 °F to +140 °F)	-30 °C to +60 °C (-22 °F to +140 °F)
Operating Humidity	95% or less	95% or less	95% or less	95% or less	95% or less
Local Storage	128 GB	128 GB	128 GB	128 GB	128 GB
Audio I/O	-	-	-	1 in, 1 out	1 in, 1 out
Alarm I/O	-	-	-	1 in, 1 out	1 in, 1 out
Power Supply	12 VDC ± 25%, 5 W PoE (802.3af, class 3), 6.5 W	12 VDC ± 25%, 6 W PoE (802.3af, 37 to 57 V), 7.5 W	12 VDC ± 25%, 6 W PoE (802.3af, class 3), 7.5 W	12 VDC ± 25%, 5 W PoE (802.3af, class 3), 6.5 W	12 VDC ± 25%, 6 W PoE (802.3af, 37 to 57 V), 7.5 W

Model	 <b>NEW</b>	 <b>NEW</b>	 <b>NEW</b>	 <b>NEW</b>	 <b>NEW</b>
Image Sensor	1/2.5" Progressive Scan CMOS	1/2.8" Progressive Scan CMOS	1/2.5" Progressive Scan CMOS	1/2.8" Progressive Scan CMOS	1/2.5" Progressive Scan CMOS
Max. Resolution	3840 × 2160	1920 × 1080	3840 × 2160	1920 × 1080	2688 × 1520
Video Compression	H.265 / H.264 / MJPEG / H.264+ / H.265+	H.265 / H.264 / MJPEG / H.264+ / H.265+	H.265 / H.264 / MJPEG / H.264+ / H.265+	H.265 / H.264 / MJPEG / H.264+ / H.265+	H.265 / H.264 / MJPEG / H.264+ / H.265+
Min. Illumination	Color: 0.028 lux @ (F2.0, AGC ON)	Color: 0.009 lux @ (F1.6, AGC ON)	Color: 0.028 lux @ (F2.0, AGC ON)	Color: 0.009 lux @ (F1.6, AGC ON)	Color: 0.014 lux @ (F1.6, AGC ON)
WDR	120 dB	120 dB	120 dB	120 dB	120 dB
Lens	2.8 mm, 4 mm, 6 mm	2.8mm, 4mm, 6mm	2.8mm, 4mm, 6mm	2.8 mm, 4 mm, 6 mm	2.8 mm, 4 mm, 6 mm
FOV	2.8 mm: Horizontal FOV: 102° 4 mm: Horizontal FOV: 79° 6 mm: Horizontal FOV: 50°	2.8 mm: Horizontal FOV: 108°, vertical FOV: 58°, diagonal FOV: 128° 4 mm: Horizontal FOV: 86°, vertical FOV: 46°, diagonal FOV: 103° 6 mm: Horizontal FOV: 52°, vertical FOV: 29°, diagonal FOV: 60°	2.8 mm: Horizontal FOV: 102°, vertical FOV: 53°, diagonal FOV: 124° 4 mm: Horizontal FOV: 79°, vertical FOV: 42°, diagonal FOV: 95° 6 mm: Horizontal FOV: 50°, vertical FOV: 28°, diagonal FOV: 59°	2.8 mm: Horizontal FOV: 108° 4 mm: Horizontal FOV: 86.4° 6 mm: Horizontal FOV: 52°	2.8 mm: Horizontal FOV: 109°, vertical FOV: 60°, diagonal FOV: 131° 4 mm: Horizontal FOV: 88°, vertical FOV: 46°, diagonal FOV: 105° 6 mm: Horizontal FOV: 53°, vertical FOV: 30°, diagonal FOV: 61°
Max. IR Range	Up to 40 m	Up to 40 m	Up to 40 m	Up to 40 m	Up to 40 m
VCA	Line crossing detection, intrusion detection, unattended baggage detection, object removal detection, face detection, scene change detection	Line crossing detection, intrusion detection, unattended baggage detection, object removal detection, face detection, scene change detection	Line crossing detection, intrusion detection, unattended baggage detection, object removal detection, face detection, scene change detection	Line crossing detection, intrusion detection, unattended baggage detection, object removal detection, face detection, scene change detection	Line crossing detection, intrusion detection, unattended baggage detection, object removal detection, face detection, scene change detection
Frame Rate	50 Hz: 20 fps (3840 × 2160), 25 fps (3072 × 1728, 2560 × 1440, 1920 × 1080, 1280 × 720) 60 Hz: 20 fps (3840 × 2160), 30 fps (3072 × 1728, 2560 × 1440, 1920 × 1080, 1280 × 720)	50 Hz: 50 fps (1920 × 1080, 1280 × 960, 1280 × 720) 60 Hz: 60 fps (1920 × 1080, 1280 × 960, 1280 × 720)	50 Hz: 20 fps (3840 × 2160), 25 fps (3072 × 1728, 2560 × 1440, 1920 × 1080, 1280 × 720) 60 Hz: 20 fps (3840 × 2160), 30 fps (3072 × 1728, 2560 × 1440, 1920 × 1080, 1280 × 720)	"50 Hz: 50 fps (1920 × 1080, 1280 × 960, 1280 × 720) 60 Hz: 60 fps (1920 × 1080, 1280 × 960, 1280 × 720)"	"50 Hz: 25 fps (2688 × 1520, 2304 × 1296, 1920 × 1080) 60 Hz: 30 fps (2688 × 1520, 2304 × 1296, 1920 × 1080)"
Multi-Streaming	3	2	2	3	3
Protection Level	IP67, IK10	IK10	IK10	IP67	IP67
Angle Adjustment	Pan: 0° to 355°, tilt: 0° to 75°, rotate: 0° to 355°	Pan: 0° to 355°, tilt: 0° to 75°, rotate: 0° to 355°	Pan: 0° to 355°, tilt: 0° to 75°, rotate: 0° to 355°	Pan: 0° to 360°, tilt: 0° to 75°, rotate: 0° to 360°	Pan: 0° to 360°, tilt: 0° to 75°, rotate: 0° to 360°
Operating Temperature	-30 °C to +60 °C (-22 °F to +140 °F)	-10 °C to +40 °C (14 °F to +104 °F)	-10 °C to +40 °C (14 °F to +104 °F)	-30 °C to +60 °C (-22 °F to +140 °F)	-30 °C to +60 °C (-22 °F to +140 °F)
Operating Humidity	95% or less	95% or less	95% or less	95% or less	95% or less
Local Storage	128 GB	128 GB	128 GB	128 GB	128 GB
Audio I/O	1 in, 1 out	1 in, 1 out	1 in, 1 out	-	-
Alarm I/O	1 in, 1 out	1 in, 1 out	1 in, 1 out	-	-
Power Supply	12 VDC ± 25%, 6.2 W PoE (802.3af, class 3), 9 W	12 VDC ± 20%, 7 W PoE (802.3af, class 3), 8.5 W	12 VDC ± 20%, 7 W PoE (802.3af, class 3), 8.5 W	"12 VDC ± 25%, 6 W PoE (802.3af, 36 to 57 V, class 3), 7 W"	"12 VDC ± 25%, 6 W PoE (802.3af, 36 to 57 V, class 3), 7.5 W"

Model	 <b>NEW</b>	 <b>NEW</b>	 <b>NEW</b>	 <b>NEW</b>	 <b>NEW</b>	
Image Sensor	1/2" Progressive Scan CMOS	1/2.8" Progressive Scan CMOS	1/2.7" Progressive Scan CMOS	1/2.8" Progressive Scan CMOS	1/2.5" Progressive Scan CMOS	
Max. Resolution	3840 × 2160	1920 × 1080	2688 × 1520	1920 × 1080	2688 × 1520	
Video Compression	H.265 / H.264 / MJPEG / H.264+ / H.265+	H.265 / H.264 / MJPEG / H.264+ / H.265+	H.265 / H.264 / MJPEG / H.264+ / H.265+	H.265 / H.264 / MJPEG / H.264+ / H.265+	H.265 / H.264 / MJPEG / H.264+ / H.265+	
Min. Illumination	Color: 0.014 lux @ (F1.6, AGC ON)	Color: 0.009 lux @ (F1.6, AGC ON)	Color: 0.014 lux @ (F1.6, AGC ON)	Color: 0.0068 lux @ (F1.4, AGC ON)	Color: 0.011 lux @ (F1.4, AGC ON)	
WDR	120 dB	120 dB	120 dB	120 dB	120 dB	
Lens	2.8 mm, 4 mm, 6 mm	2.8 mm, 4 mm, 6 mm	2.8 mm, 4 mm, 6 mm	2.7 to 13.5 mm	2.7 to 13.5 mm	
FOV	2.8 mm: Horizontal FOV: 102°, vertical FOV: 55°, diagonal FOV: 120° 4 mm: Horizontal FOV: 78°, vertical FOV: 43°, diagonal FOV: 92° 6 mm: Horizontal FOV: 50°, vertical FOV: 27°, diagonal FOV: 59°	2.8 mm: Horizontal FOV: 108°, Vertical FOV: 59°, Diagonal FOV: 129° 4 mm: Horizontal FOV: 87°, Vertical FOV: 45°, Diagonal FOV: 102° 6 mm: Horizontal FOV: 53°, Vertical FOV: 29°, Diagonal FOV: 60°	2.8 mm: Horizontal FOV: 109°, vertical FOV: 60°, diagonal FOV: 131° 4 mm: Horizontal FOV: 88°, vertical FOV: 46°, diagonal FOV: 105° 6 mm: Horizontal FOV: 53°, vertical FOV: 30°, diagonal FOV: 61°	Horizontal FOV: 105° to 35° Vertical FOV: 56° to 20° Diagonal FOV: 126° to 40.5°	Horizontal FOV: 114° to 32° Vertical FOV: 59° to 18° Diagonal FOV: 141° to 36.5°	
Max. IR Range	Up to 40 m	Up to 15 m	Up to 15 m	Up to 60 m	Up to 60 m	
VCA	Line crossing detection, intrusion detection, unattended baggage detection, object removal detection, face detection, scene change detection	Line crossing detection, intrusion detection, unattended baggage detection, object removal detection, face detection, scene change detection	Line crossing detection, intrusion detection, unattended baggage detection, object removal detection, face detection, scene change detection	Line crossing detection, intrusion detection, unattended baggage detection, object removal detection, face detection, scene change detection	Line crossing detection, intrusion detection, unattended baggage detection, object removal detection, face detection, scene change detection	
Frame Rate	50 Hz: 20 fps (3840 × 2160), 25 fps (3072 × 1728, 2560 × 1440, 1920 × 1080, 1280 × 720) 60 Hz: 20 fps (3840 × 2160), 30 fps (3072 × 1728, 2560 × 1440, 1920 × 1080, 1280 × 720)	50 Hz: 50 fps (1920 × 1080, 1280 × 960, 1280 × 720) 60 Hz: 60 fps (1920 × 1080, 1280 × 960, 1280 × 720)	50 Hz: 25 fps (2688 × 1520, 2304 × 1296, 1920 × 1080) 60 Hz: 30 fps (2688 × 1520, 2304 × 1296, 1920 × 1080)	50 Hz: 50 fps (1920 × 1080, 1280 × 960, 1280 × 720) 60 Hz: 60 fps (1920 × 1080, 1280 × 960, 1280 × 720)	50 Hz: 25 fps (2688 × 1520, 2304 × 1296, 1920 × 1080) 60 Hz: 30 fps (2688 × 1520, 2304 × 1296, 1920 × 1080)	
Multi-Streaming	3	3	3	3	3	
Protection Level	IP67	IP66, IK08	IP66, IK08	IP67, IK10	IP67, IK10	
Angle Adjustment	Pan: 0° to 360°, tilt: 0° to 75°, rotate: 0° to 360°	Pan: -30° to +30°, tilt: 0° to 75°, rotate: 0° to 360°	Pan: -30° to +30°, tilt: 0° to 75°, rotate: 0° to 360°	Pan: 0° to 360°, tilt: 0° to 90°, rotate: 0° to 360°	Pan: 0° to 360°, tilt: 0° to 90°, rotate: 0° to 360°	
Operating Temperature	-30 °C to +60 °C (-22 °F to +140 °F)	-30 °C to +60 °C (-22 °F to +140 °F)	-30 °C to +60 °C (-22 °F to +140 °F)	-30 °C to +60 °C (-22 °F to +140 °F)	-30 °C to +60 °C (-22 °F to +140 °F)	
Operating Humidity	95% or less	95% or less	95% or less	95% or less	95% or less	
Local Storage	128 GB	128 GB	128 GB	128 GB	128 GB	
Audio I/O	-	1 built-in mic, 1 out	1 built-in mic, 1 out	1 in, 1 out	1 in, 1 out	
Alarm I/O	-	1 in, 1 out	1 in, 1 out	1 in, 1 out	1 in, 1 out	
Power Supply	12 VDC ± 25%, 7.5 W PoE (802.3af, 37 to 57 V), 9 W	12 VDC ± 25%, 7.5 W PoE (802.3af, 36 to 57 V, class 3), 9.5 W	12 VDC ± 25%, 8.5 W PoE (802.3af, 36 to 57 V), 10 W	12 VDC ± 25%, 15.5 W PoE (802.3at, 42.5 to 57 V), 17.5 W	12 VDC ± 25%, 14.4 W PoE (802.3at, 42.5 to 57 V), 18 W	

Model	 <b>NEW</b>	 <b>NEW</b>	 <b>NEW</b>	 <b>NEW</b>	 <b>NEW</b>
Image Sensor	1/2" Progressive Scan CMOS	1/2.8" Progressive Scan CMOS	1/2.5" Progressive Scan CMOS	1/2" Progressive Scan CMOS	1/2.8" Progressive Scan CMOS
Max. Resolution	3840 × 2160	1920 × 1080	2688 × 1520	3840 × 2160	1920 × 1080
Video Compression	H.265 / H.264 / MJPEG / H.264+ / H.265+	H.265 / H.264 / MJPEG / H.264+ / H.265+	H.265 / H.264 / MJPEG / H.264+ / H.265+	H.265 / H.264 / MJPEG / H.264+ / H.265+	H.265 / H.264 / MJPEG / H.264+ / H.265+
Min. Illumination	Color: 0.011 lux @ (F1.4, AGC ON)	Color: 0.0068 lux @ (F1.4, AGC ON)	Color: 0.011 lux @ (F1.4, AGC ON)	Color: 0.011 lux @ (F1.4, AGC ON)	Color: 0.009 lux @ (F1.6, AGC ON)
WDR	120 dB	120 dB	120 dB	120 dB	120 dB
Lens	2.7 to 13.5 mm	2.7 to 13.5 mm	2.7 to 13.5 mm	2.7 to 13.5 mm	2.8 mm, 4 mm, 6 mm
FOV	Horizontal FOV: 114° to 44° Vertical FOV: 61° to 25° Diagonal FOV: 136° to 50°	Horizontal FOV: 105° to 35° Vertical FOV: 56° to 20° Diagonal FOV: 126° to 40.5°	Horizontal FOV: 114° to 32° Vertical FOV: 59° to 18° Diagonal FOV: 141° to 36.5°	Horizontal FOV: 112° to 46° Vertical FOV: 60° to 26° Diagonal FOV: 133° to 53°	2.8 mm: Horizontal FOV: 108° 4 mm: Horizontal FOV: 86.4° 6 mm: Horizontal FOV: 52°
Max. IR Range	Up to 60 m	Up to 40 m	Up to 40 m	Up to 40 m	Up to 90 m
VCA	Line crossing detection, intrusion detection, unattended baggage detection, object removal detection, face detection, scene change detection	Line crossing detection, intrusion detection, unattended baggage detection, object removal detection, face detection, scene change detection	Line crossing detection, intrusion detection, unattended baggage detection, object removal detection, face detection, scene change detection	Line crossing detection, intrusion detection, unattended baggage detection, object removal detection, face detection, scene change detection	Line crossing detection, intrusion detection, unattended baggage detection, object removal detection, face detection, scene change detection
Frame Rate	50 Hz: 20 fps (3840 × 2160), 25 fps (3072 × 1728, 2560 × 1440, 1920 × 1080, 1280 × 720) 60 Hz: 20 fps (3840 × 2160), 30 fps (3072 × 1728, 2560 × 1440, 1920 × 1080, 1280 × 720)	50 Hz: 50 fps (1920 × 1080, 1280 × 960, 1280 × 720) 60 Hz: 60 fps (1920 × 1080, 1280 × 960, 1280 × 720)	50 Hz: 25 fps (2688 × 1520, 2304 × 1296, 1920 × 1080) 60 Hz: 30 fps (2688 × 1520, 2304 × 1296, 1920 × 1080)	50 Hz: 20 fps (3840 × 2160), 25 fps (3072 × 1728, 2560 × 1440, 1920 × 1080, 1280 × 720) 60 Hz: 20 fps (3840 × 2160), 30 fps (3072 × 1728, 2560 × 1440, 1920 × 1080, 1280 × 720)	50 Hz: 50 fps (1920 × 1080, 1280 × 960, 1280 × 720) 60 Hz: 60 fps (1920 × 1080, 1280 × 960, 1280 × 720)
Multi-Streaming	3	3	3	3	3
Protection Level	IP67, IK10	IP67, IK10	IP67, IK10	IP67, IK10	IP67
Angle Adjustment	Pan: 0° to 360°, tilt: 0° to 90°, rotate: 0° to 360°	Pan: 0° to 355°, tilt: 0° to 75°, rotate: 0° to 355°	Pan: 0° to 355°, tilt: 0° to 75°, rotate: 0° to 355°	Pan: 0° to 355°, tilt: 0° to 75°, rotate: 0° to 355°	Pan: 0° to 360°, tilt: 0° to 100°, rotate: 0° to 360°
Operating Temperature	-30 °C to +60 °C (-22 °F to +140 °F)	-30 °C to +60 °C (-22 °F to +140 °F)	-30 °C to +60 °C (-22 °F to +140 °F)	-30 °C to +60 °C (-22 °F to +140 °F)	-30 °C to +60 °C (-22 °F to +140 °F)
Operating Humidity	95% or less	95% or less	95% or less	95% or less	95% or less
Local Storage	128 GB	128 GB	128 GB	128 GB	128 GB
Audio I/O	1 in, 1 out	1 in, 1 out	1 in, 1 out	1 in, 1 out	1 in, 1 out
Alarm I/O	1 in, 1 out	1 in, 1 out	1 in, 1 out	1 in, 1 out	1 in, 1 out
Power Supply	12 VDC ± 25%, 14.5 W PoE (802.3at, class 4), 18 W	12 VDC ± 25%, 9.5 W PoE (802.3af, 36 to 57 V), 11 W	12 VDC ± 25%, 11 W PoE (802.3af, 36 to 57 V), 12.5 W	12 VDC ± 25%, 10.5 W PoE (802.3af, class 3), 12.5 W	12 VDC ± 25%, 10 W; PoE, 12.5 W

Model	DS-2CD3T4560-4IS(B)  <b>NEW</b>	DS-2CD3T8560-4IS(B)  <b>NEW</b>	DS-2CD395560-IS  <b>NEW</b>
Image Sensor	1/2.5" Progressive Scan CMOS	1/2" Progressive Scan CMOS	1/2.5" Progressive Scan CMOS
Max. Resolution	2688 × 1520	3840 × 2160	2560 × 1920
Video Compression	H.265 / H.264 / MJPEG / H.264+ / H.265+	H.265 / H.264 / MJPEG / H.264+ / H.265+	H.265 / H.264 / MJPEG / H.264+ / H.265+
Min. Illumination	Color: 0.014 lux @ (F1.6, AGC ON)	Color: 0.014 lux @ (F1.6, AGC ON)	Color: 0.034 lux @ (F2.2, AGC ON)
WDR	120 dB	120 dB	120 dB
Lens	2.8 mm, 4 mm, 6 mm	2.8 mm, 4 mm, 6 mm	1.05 mm
FOV	2.8 mm: Horizontal FOV: 109°, vertical FOV: 60°, diagonal FOV: 131° 4 mm: Horizontal FOV: 88°, vertical FOV: 46°, diagonal FOV: 105° 6 mm: Horizontal FOV: 53°, vertical FOV: 30°, diagonal FOV: 61°	2.8 mm: Horizontal FOV: 102°, vertical FOV: 55°, diagonal FOV: 120° 4 mm: Horizontal FOV: 78°, vertical FOV: 43°, diagonal FOV: 92° 6 mm: Horizontal FOV: 50°, vertical FOV: 27°, diagonal FOV: 59°	1.05 mm: Horizontal FOV: 180°, vertical FOV: 180°
Max. IR Range	Up to 90 m	Up to 90 m	Up to 25 m
VCA	Line crossing detection, intrusion detection, unattended baggage detection, object removal detection, face detection, scene change detection	Line crossing detection, intrusion detection, unattended baggage detection, object removal detection, face detection, scene change detection	Line crossing detection, intrusion detection
Frame Rate	50 Hz: 25 fps (2688 × 1520, 2304 × 1296, 1920 × 1080) 60 Hz: 30 fps (2688 × 1520, 2304 × 1296, 1920 × 1080)	50 Hz: 20 fps (3840 × 2160), 25 fps (3072 × 1728, 2560 × 1440, 1920 × 1080, 1280 × 720) 60 Hz: 20 fps (3840 × 2160), 30 fps (3072 × 1728, 2560 × 1440, 1920 × 1080, 1280 × 720)	50 Hz: 25 fps (2560 × 1920, 2048 × 1536, 1280 × 960) 60 Hz: 30 fps (2560 × 1920, 2048 × 1536, 1280 × 960)
Multi-Streaming	3	3	2
Protection Level	IP67	IP67	-
Angle Adjustment	Pan: 0° to 360°, tilt: 0° to 100°, rotate: 0° to 360°	Pan: 0° to 360°, tilt: 0° to 90°, rotate: 0° to 360°	-
Operating Temperature	-30 °C to +60 °C (-22 °F to +140 °F)	-30 °C to +60 °C (-22 °F to +140 °F)	-10 °C to +50 °C (14 °F to +122 °F)
Operating Humidity	95% or less	95% or less	95% or less
Local Storage	128 GB	128 GB	128 GB
Audio I/O	1 in, 1 out	1 in, 1 out	1 in, 1 out
Alarm I/O	1 in, 1 out	1 in, 1 out	1 in, 1 out
Power Supply	12 VDC ± 25%, 11.5 W PoE (802.3af, 36 to 57 V, class 3), 12.9 W	12 VDC ± 25%, 11 W PoE (802.3af, 36 to 57 V), 12.9 W	12 VDC ± 25%, 5 W PoE (802.3af, 36 to 57 V, class 3), 6.7 W



- Auto iris (all vari-focal models)
- Efficient H.265+ compression technology to save bandwidth and storage
- 4 behavior analyses, 1 exception detection, and face detection
- 3 Streams

Model	DS-2CD3023G0-I	DS-2CD3043G0-I	DS-2CD3063G0-I	DS-2CD3123G0-I(S)	DS-2CD3143G0-I(S)	
Image Sensor	1/2.8" Progressive Scan CMOS	1/3" Progressive Scan CMOS	1/2.9" Progressive Scan CMOS	1/2.8" Progressive Scan CMOS	1/3" Progressive Scan CMOS	
Max. Resolution	1920 × 1080	2688 × 1520	3072 × 2048	1920 × 1080	2688 × 1520	
Video Compression	H.265 / H.264 / MJPEG / H.264+ / H.265+	H.265 / H.264 / MJPEG / H.264+ / H.265+	H.265 / H.264 / MJPEG / H.264+ / H.265+	H.265 / H.264 / MJPEG / H.264+ / H.265+	H.265 / H.264 / MJPEG / H.264+ / H.265+	
Min. Illumination	Color: 0.028 lux @ (F2.0, AGC ON)	Color: 0.018 lux @ (F1.6, AGC ON)	Color: 0.028 lux @ (F2.0, AGC ON)	Color: 0.028 lux @ (F2.0, AGC ON)	Color: 0.018 lux @ (F1.6, AGC ON)	
WDR	120 dB	120 dB	120 dB	120 dB	120 dB	
Lens	2.8 mm, 4 mm, 6 mm	2.8 mm, 4 mm, 6 mm	2.8 mm, 4 mm, 6 mm	2.8 mm, 4 mm, 6 mm	2.8 mm, 4 mm, 6 mm	
FOV	2.8 mm: Horizontal FOV: 103°, vertical FOV: 59°, diagonal FOV: 118° 4 mm: Horizontal FOV: 86°, vertical FOV: 46°, diagonal FOV: 102° 6 mm: Horizontal FOV: 54°, vertical FOV: 30°, diagonal FOV: 62°	2.8 mm: Horizontal FOV: 103°, vertical FOV: 58°, diagonal FOV: 123° 4 mm: Horizontal FOV: 83°, vertical FOV: 45°, diagonal FOV: 99° 6 mm: Horizontal FOV: 51°, vertical FOV: 29°, diagonal FOV: 58°	2.8 mm: Horizontal FOV: 97°, vertical FOV: 63°, diagonal FOV: 120° 4 mm: Horizontal FOV: 78°, vertical FOV: 50°, diagonal FOV: 97° 6 mm: Horizontal FOV: 60°, vertical FOV: 39°, diagonal FOV: 75°	2.8 mm: Horizontal FOV: 114°, vertical FOV: 62°, diagonal FOV: 135° 4 mm: Horizontal FOV: 86°, vertical FOV: 46°, diagonal FOV: 102° 6 mm: Horizontal FOV: 54°, vertical FOV: 30°, diagonal FOV: 62°	2.8 mm: Horizontal FOV: 103°, vertical FOV: 58°, diagonal FOV: 123° 4 mm: Horizontal FOV: 83°, vertical FOV: 45°, diagonal FOV: 99° 6 mm: Horizontal FOV: 51°, vertical FOV: 29°, diagonal FOV: 58°	2.8 mm: Horizontal FOV: 114°, vertical FOV: 62°, diagonal FOV: 135° 4 mm: Horizontal FOV: 86°, vertical FOV: 46°, diagonal FOV: 102° 6 mm: Horizontal FOV: 54°, vertical FOV: 30°, diagonal FOV: 62°
Max. IR Range	Up to 40 m	Up to 40 m	Up to 40 m	Up to 40 m	Up to 40 m	
VCA	Line crossing detection, intrusion detection, unattended baggage detection, object removal detection, face detection, scene change detection	Line crossing detection, intrusion detection, unattended baggage detection, object removal detection, face detection, scene change detection	Line crossing detection, intrusion detection, unattended baggage detection, object removal detection, face detection, scene change detection	Line crossing detection, intrusion detection, unattended baggage detection, object removal detection, face detection, scene change detection	Line crossing detection, intrusion detection, unattended baggage detection, object removal detection, face detection, scene change detection	
Frame Rate	50 Hz: 25 fps (1920 × 1080, 1280 × 960, 1280 × 720) 60 Hz: 30 fps (1920 × 1080, 1280 × 960, 1280 × 720)	50 Hz: 25 fps (2688 × 1520, 2560 × 1440, 2304 × 1296, 1920 × 1080) 60 Hz: 30 fps (2688 × 1520, 2560 × 1440, 2304 × 1296, 1920 × 1080)	50 Hz: 20 fps (3072 × 2048, 3072 × 1728, 2944 × 1656), 25 fps (2560 × 1440, 1920 × 1080, 1280 × 720) 60 Hz: 20 fps (3072 × 2048, 3072 × 1728, 2944 × 1656), 30 fps (2560 × 1440, 1920 × 1080, 1280 × 720)	50 Hz: 25 fps (1920 × 1080, 1280 × 960, 1280 × 720) 60 Hz: 30 fps (1920 × 1080, 1280 × 960, 1280 × 720)	50 Hz: 25 fps (2688 × 1520, 2560 × 1440, 2304 × 1296, 1920 × 1080) 60 Hz: 30 fps (2688 × 1520, 2560 × 1440, 2304 × 1296, 1920 × 1080)	50 Hz: 25 fps (1920 × 1080, 1280 × 960, 1280 × 720) 60 Hz: 30 fps (1920 × 1080, 1280 × 960, 1280 × 720)
Multi-Streaming	3	3	3	3	3	
Protection Level	IP67	IP67	IP67	IP67, IK10	IP67, IK10	
Angle Adjustment	Pan: 0° to 360°, tilt: 0° to 90°, rotate: 0° to 360°	Pan: 0° to 360°, tilt: 0° to 90°, rotate: 0° to 360°	Pan: 0° to 360°, tilt: 0° to 90°, rotate: 0° to 360°	Pan: 0° to 355°, tilt: 0° to 75°, rotate: 0° to 355°	Pan: 0° to 355°, tilt: 0° to 75°, rotate: 0° to 355°	
Operating Temperature	-30 °C to +60 °C (-22 °F to +140 °F)	-30 °C to +60 °C (-22 °F to +140 °F)	-30 °C to +60 °C (-22 °F to +140 °F)	-30 °C to +60 °C (-22 °F to +140 °F)	-30 °C to +60 °C (-22 °F to +140 °F)	
Operating Humidity	95% or less	95% or less	95% or less	95% or less	95% or less	
Local Storage	128 GB	128 GB	128 GB	128 GB	128 GB	
Audio I/O	-	-	-	With -S model: 1 in, 1 out	With -S model: 1 in, 1 out	
Alarm I/O	-	-	-	With -S model: 1 in, 1 out	With -S model: 1 in, 1 out	
Power Supply	12 VDC ± 25%, 6 W PoE (802.3af, 37 V to 57 V), 7.5 W	12 VDC ± 25%, 6 W PoE (802.3af, 37 V to 57 V), 7.5 W	12 VDC ± 25%, 6 W PoE (802.3af, 37 V to 57 V), 7.5 W	12 VDC ± 25%, 6 W PoE (802.3af, class 3), 7.5 W	12 VDC ± 25%, 6 W PoE (802.3af, 37 V to 57 V), 7.5 W	

Model	DS-2CD3163G0-I(S)	DS-2CD3323G0-I	DS-2CD3343G0-I	DS-2CD3363G0-I	DS-2CD3T23G0-2I(S)/4I(S)	
Image Sensor	1/2.9" Progressive Scan CMOS	1/2.8" Progressive Scan CMOS	1/3" Progressive Scan CMOS	1/2.9" Progressive Scan CMOS	1/2.8" Progressive Scan CMOS	
Max. Resolution	3072 × 2048	1920 × 1080	2688 × 1520	3072 × 2048	1920 × 1080	
Video Compression	H.265 / H.264 / MJPEG / H.264+ / H.265+	H.265 / H.264 / MJPEG / H.264+ / H.265+	H.265 / H.264 / MJPEG / H.264+ / H.265+	H.265 / H.264 / MJPEG / H.264+ / H.265+	H.265 / H.264 / MJPEG / H.264+ / H.265+	
Min. Illumination	Color: 0.028 lux @ (F2.0, AGC ON)	Color: 0.028 lux @ (F2.0, AGC ON)	Color: 0.018 lux @ (F1.6, AGC ON)	Color: 0.028 lux @ (F2.0, AGC ON)	Color: 0.028 lux @ (F2.0, AGC ON)	
WDR	120 dB	120 dB	120 dB	120 dB	120 dB	
Lens	2.8 mm, 4 mm, 6 mm	2.8 mm, 4 mm, 6 mm	2.8 mm, 4 mm, 6 mm	2.8 mm, 4 mm, 6 mm	2.8 mm, 4 mm, 6 mm	
FOV	2.8 mm: Horizontal FOV: 97°, vertical FOV: 63°, diagonal FOV: 120° 4 mm: Horizontal FOV: 78°, vertical FOV: 50°, diagonal FOV: 97° 6 mm: Horizontal FOV: 60°, vertical FOV: 39°, diagonal FOV: 75°	2.8 mm: Horizontal FOV: 114°, vertical FOV: 62°, diagonal FOV: 135° 4 mm: Horizontal FOV: 86°, vertical FOV: 46°, diagonal FOV: 102° 6 mm: Horizontal FOV: 54°, vertical FOV: 30°, diagonal FOV: 62°	2.8 mm: Horizontal FOV: 103°, vertical FOV: 58°, diagonal FOV: 123° 4 mm: Horizontal FOV: 83°, vertical FOV: 45°, diagonal FOV: 99° 6 mm: Horizontal FOV: 51°, vertical FOV: 29°, diagonal FOV: 58°	2.8 mm: Horizontal FOV: 97°, vertical FOV: 63°, diagonal FOV: 120° 4 mm: Horizontal FOV: 78°, vertical FOV: 50°, diagonal FOV: 97° 6 mm: Horizontal FOV: 60°, vertical FOV: 39°, diagonal FOV: 75°	2.8 mm: Horizontal FOV: 114°, vertical FOV: 62°, diagonal FOV: 135° 4 mm: Horizontal FOV: 86°, vertical FOV: 46°, diagonal FOV: 102° 6 mm: Horizontal FOV: 54°, vertical FOV: 30°, diagonal FOV: 62°	2.8 mm: Horizontal FOV: 114°, vertical FOV: 62°, diagonal FOV: 135° 4 mm: Horizontal FOV: 86°, vertical FOV: 46°, diagonal FOV: 102° 6 mm: Horizontal FOV: 54°, vertical FOV: 30°, diagonal FOV: 62°
Max. IR Range	Up to 40 m	Up to 40 m	Up to 40 m	Up to 40 m	-2I: Up to 60 m -4I: Up to 90 m	
VCA	Line crossing detection, intrusion detection, unattended baggage detection, object removal detection, face detection, scene change detection	Line crossing detection, intrusion detection, unattended baggage detection, object removal detection, face detection, scene change detection	Line crossing detection, intrusion detection, unattended baggage detection, object removal detection, face detection, scene change detection	Line crossing detection, intrusion detection, unattended baggage detection, object removal detection, face detection, scene change detection	Line crossing detection, intrusion detection, unattended baggage detection, object removal detection, face detection, scene change detection	
Frame Rate	50 Hz: 20 fps (3072 × 2048, 3072 × 1728, 2944 × 1656), 25 fps (2560 × 1440, 1920 × 1080, 1280 × 720) 60 Hz: 20 fps (3072 × 2048, 3072 × 1728, 2944 × 1656), 30 fps (2560 × 1440, 1920 × 1080, 1280 × 720)	50 Hz: 25 fps (1920 × 1080, 1280 × 960, 1280 × 720) 60 Hz: 30 fps (1920 × 1080, 1280 × 960, 1280 × 720)	50 Hz: 25 fps (2688 × 1520, 2560 × 1440, 2304 × 1296, 1920 × 1080) 60 Hz: 30 fps (2688 × 1520, 2560 × 1440, 2304 × 1296, 1920 × 1080)	50 Hz: 20 fps (3072 × 2048, 3072 × 1728, 2944 × 1656), 25 fps (2560 × 1440, 1920 × 1080, 1280 × 720) 60 Hz: 20 fps (3072 × 2048, 3072 × 1728, 2944 × 1656), 30 fps (2560 × 1440, 1920 × 1080, 1280 × 720)	50 Hz: 25 fps (1920 × 1080, 1280 × 960, 1280 × 720) 60 Hz: 30 fps (1920 × 1080, 1280 × 960, 1280 × 720)	50 Hz: 25 fps (1920 × 1080, 1280 × 960, 1280 × 720) 60 Hz: 30 fps (1920 × 1080, 1280 × 960, 1280 × 720)
Multi-Streaming	3	3	3	3	3	
Protection Level	IP67, IK10	IP67	IP67	IP67	IP67	
Angle Adjustment	Pan: 0° to 355°, tilt: 0° to 75°, rotate: 0° to 355°	Pan: 0° to 360°, tilt: 0° to 75°, rotate: 0° to 360°	Pan: 0° to 360°, tilt: 0° to 75°, rotate: 0° to 360°	Pan: 0° to 360°, tilt: 0° to 75°, rotate: 0° to 360°	Pan: 0° to 360°, tilt: 0° to 100°, rotate: 0° to 360°	
Operating Temperature	-30 °C to +60 °C (-22 °F to +140 °F)	-30 °C to +60 °C (-22 °F to +140 °F)	-30 °C to +60 °C (-22 °F to +140 °F)	-30 °C to +60 °C (-22 °F to +140 °F)	-30 °C to +60 °C (-22 °F to +140 °F)	
Operating Humidity	95% or less	95% or less	95% or less	95% or less	95% or less	
Local Storage	128 GB	128 GB	128 GB	128 GB	128 GB	
Audio I/O	With -S model: 1 in, 1 out	-	-	-	With -S model: 1 in, 1 out	
Alarm I/O	With -S model: 1 in, 1 out	-	-	-	With -S model: 1 in, 1 out	
Power Supply	12 VDC ± 25%, 7.5 W PoE (802.3af, 37 V to 57 V), 9 W	12 VDC ± 25%, 6 W PoE (802.3af, 37 V to 57 V), 7.5 W	12 VDC ± 25%, 6 W PoE (802.3af, 37 V to 57 V), 7.5 W	12 VDC ± 25%, 6 W PoE (802.3af, 37 V to 57 V), 7.5 W	2I: 12 VDC ± 25%, 7.5 W PoE (802.3af, class 3), 9.5 W 4I: 12 VDC ± 25%, 11.5 W PoE (802.3af, class 3), 12.5W	



Model	DS-2CD3T43G0-2I(S)/4I(S)	DS-2CD3T63G0-2I(S)/4I(S)	DS-2CD3623G1-IZ(S)	DS-2CD3643G1-IZ(S)	DS-2CD3663G1-IZ(S)
Image Sensor	1/3" Progressive Scan CMOS	1/2.9" Progressive Scan CMOS	1/2.8" Progressive Scan CMOS	1/3" Progressive Scan CMOS	1/2.9" Progressive Scan CMOS
Max. Resolution	2688 × 1520	3072 × 2048	1920 × 1080	2688 × 1520	3072 × 2048
Video Compression	H.265 / H.264 / MJPEG / H.264+ / H.265+	H.265 / H.264 / MJPEG / H.264+ / H.265+	H.265 / H.264 / MJPEG / H.264+ / H.265+	H.265 / H.264 / MJPEG / H.264+ / H.265+	H.265 / H.264 / MJPEG / H.264+ / H.265+
Min. Illumination	Color: 0.018 lux @ (F1.6, AGC ON)	Color: 0.028 lux @ (F2.0, AGC ON)	Color: 0.018 lux @ (F1.6, AGC ON)	Color: 0.018 lux @ (F1.6, AGC ON)	Color: 0.018 lux @ (F1.6, AGC ON)
WDR	120 dB	120 dB	120 dB	120 dB	120 dB
Lens	2.8 mm, 4 mm, 6 mm	2.8 mm, 4 mm, 6 mm	2.7 to 13.5 mm	2.7 to 13.5 mm	2.7 to 13.5 mm
FOV	2.8 mm: Horizontal FOV: 103°, vertical FOV: 58°, diagonal FOV: 123° 4 mm: Horizontal FOV: 83°, vertical FOV: 45°, diagonal FOV: 99° 6 mm: Horizontal FOV: 51°, vertical FOV: 29°, diagonal FOV: 58°	2.8 mm: Horizontal FOV: 97°, vertical FOV: 63°, diagonal FOV: 120° 4 mm: Horizontal FOV: 78°, vertical FOV: 50°, diagonal FOV: 97° 6 mm: Horizontal FOV: 60°, vertical FOV: 39°, diagonal FOV: 75°	Horizontal FOV: 110° to 31° Vertical FOV: 58° to 18° Diagonal FOV: 136° to 36°	Horizontal FOV: 104° to 29° Vertical FOV: 55° to 17° Diagonal FOV: 125° to 34°	Horizontal FOV: 88° to 27° Vertical FOV: 56° to 18° Diagonal FOV: 110° to 33°
Max. IR Range	-2I: Up to 60 m    -4I: Up to 90 m	-2I: Up to 60 m    -4I: Up to 90 m	Up to 60 m	Up to 60 m	Up to 60 m
VCA	Line crossing detection, intrusion detection, unattended baggage detection, object removal detection, face detection, scene change detection	Line crossing detection, intrusion detection, unattended baggage detection, object removal detection, face detection, scene change detection	Line crossing detection, intrusion detection, unattended baggage detection, object removal detection, face detection, scene change detection	Line crossing detection, intrusion detection, unattended baggage detection, object removal detection, face detection, scene change detection	Line crossing detection, intrusion detection, unattended baggage detection, object removal detection, face detection, scene change detection
Frame Rate	50 Hz: 25 fps (2688 × 1520, 2560 × 1440, 2304 × 1296, 1920 × 1080) 60 Hz: 30 fps (2688 × 1520, 2560 × 1440, 2304 × 1296, 1920 × 1080)	50 Hz: 20 fps (3072 × 2048, 3072 × 1728, 2944 × 1656), 25 fps (2560 × 1440, 1920 × 1080, 1280 × 720) 60 Hz: 20 fps (3072 × 2048, 3072 × 1728, 2944 × 1656), 30 fps (2560 × 1440, 1920 × 1080, 1280 × 720)	50 Hz: 25 fps (1920 × 1080, 1280 × 960, 1280 × 720) 60 Hz: 30 fps (1920 × 1080, 1280 × 960, 1280 × 720)	50 Hz: 25 fps (2688 × 1520, 2560 × 1440, 2304 × 1296, 1920 × 1080) 60 Hz: 30 fps (2688 × 1520, 2560 × 1440, 2304 × 1296, 1920 × 1080)	50 Hz: 20 fps (3072 × 2048, 3072 × 1728, 2944 × 1656), 25 fps (2560 × 1440, 1920 × 1080, 1280 × 720) 60 Hz: 20 fps (3072 × 2048, 3072 × 1728, 2944 × 1656), 30 fps (2560 × 1440, 1920 × 1080, 1280 × 720)
Multi-Streaming	3	3	3	3	3
Protection Level	IP67	IP67	IP67, IK10	IP67, IK10	IP67, IK10
Angle Adjustment	Pan: 0° to 360°, tilt: 0° to 100°, rotate: 0° to 360°	Pan: 0° to 360°, tilt: 0° to 100°, rotate: 0° to 360°	Pan: 0° to 360°, tilt: 0° to 90°, rotate: 0° to 360°	Pan: 0° to 360°, tilt: 0° to 90°, rotate: 0° to 360°	Pan: 0° to 355°, tilt: 0° to 90°, rotate: 0° to 355°
Operating Temperature	-30 °C to +60 °C (-22 °F to +140 °F)	-30 °C to +60 °C (-22 °F to +140 °F)	-30 °C to +60 °C (-22 °F to +140 °F)	-30 °C to +60 °C (-22 °F to +140 °F)	-30 °C to +60 °C (-22 °F to +140 °F)
Operating Humidity	95% or less	95% or less	95% or less	95% or less	95% or less
Local Storage	128 GB	128 GB	128 GB	128 GB	128 GB
Audio I/O	With -S model: 1 in, 1 out	With -S model: 1 in, 1 out	With -S model: 1 in, 1 out	With -S model: 1 in, 1 out	With -S model: 1 in, 1 out
Alarm I/O	With -S model: 1 in, 1 out	With -S model: 1 in, 1 out	With -S model: 1 in, 1 out	With -S model: 1 in, 1 out	With -S model: 1 in, 1 out
Power Supply	2I: 12 VDC ± 25%, 7.5 W PoE (802.3af, class 3), 9.5 W 4I: 12 VDC ± 25%, 11.5 W PoE (802.3af, class 3), 12.5 W	2I: 12 VDC ± 25%, 7 W PoE (802.3af, class 3), 8.5 W 4I: 12 VDC ± 25%, 10 W PoE (802.3af, class 3), 12 W	12 VDC ± 25%, 14.5 W PoE (802.3at, 42.5 V to 57 V), 18 W	12 VDC ± 25%, 14.5 W PoE (802.3at, 42.5 V to 57 V), 18 W	12 VDC ± 25%, 14.5 W PoE (802.3at, 42.5 V to 57 V), 18 W

Model	DS-2CD3723G1-IZ(S)	DS-2CD3743G1-IZ(S)	DS-2CD3763G1-IZ(S)	DS-2CD3823G0
Image Sensor	1/2.8" Progressive Scan CMOS	1/3" Progressive Scan CMOS	1/2.9" Progressive Scan CMOS	1/2.7" Progressive Scan CMOS
Max. Resolution	1920 × 1080	2688 × 1520	3072 × 2048	1920 × 1080
Video Compression	H.265 / H.264 / MJPEG / H.264+ / H.265+	H.265 / H.264 / MJPEG / H.264+ / H.265+	H.265 / H.264 / MJPEG / H.264+ / H.265+	H.265 / H.264 / MJPEG / H.264+ / H.265+
Min. Illumination	Color: 0.018 lux @ (F1.6, AGC ON)	Color: 0.018 lux @ (F1.6, AGC ON)	Color: 0.018 lux @ (F1.6, AGC ON)	Color: 0.005 lux @ (F1.2, AGC ON)
WDR	120 dB	120 dB	120 dB	Digital WDR
Lens	2.7 to 13.5 mm	2.7 to 13.5 mm	2.7 to 13.5 mm	-
FOV	Horizontal FOV: 110° to 31° Vertical FOV: 58° to 18° Diagonal FOV: 136° to 36°	Horizontal FOV: 104° to 29° Vertical FOV: 55° to 17° Diagonal FOV: 125° to 34°	Horizontal FOV: 88° to 27° Vertical FOV: 56° to 18° Diagonal FOV: 110° to 33°	Horizontal FOV: 88° to 27° Vertical FOV: 56° to 18° Diagonal FOV: 110° to 33°
Max. IR Range	Up to 40 m	Up to 40 m	Up to 40 m	-
VCA	Line crossing detection, intrusion detection, unattended baggage detection, object removal detection, face detection, scene change detection	Line crossing detection, intrusion detection, unattended baggage detection, object removal detection, face detection, scene change detection	Line crossing detection, intrusion detection, unattended baggage detection, object removal detection, face detection, scene change detection	Line crossing detection, intrusion detection
Frame Rate	50 Hz: 25 fps (1920 × 1080, 1280 × 960, 1280 × 720) 60 Hz: 30 fps (1920 × 1080, 1280 × 960, 1280 × 720)	50 Hz: 25 fps (2688 × 1520, 2560 × 1440, 2304 × 1296, 1920 × 1080) 60 Hz: 30 fps (2688 × 1520, 2560 × 1440, 2304 × 1296, 1920 × 1080)	50 Hz: 20 fps (3072 × 2048, 3072 × 1728, 2944 × 1656), 25 fps (2560 × 1440, 1920 × 1080, 1280 × 720) 60 Hz: 20 fps (3072 × 2048, 3072 × 1728, 2944 × 1656), 30 fps (2560 × 1440, 1920 × 1080, 1280 × 720)	50 Hz: 25 fps (1920 × 1080, 1280 × 960, 1280 × 720) 60 Hz: 30 fps (1920 × 1080, 1280 × 960, 1280 × 720)
Multi-Streaming	3	3	3	3
Protection Level	IP67, IK10	IP67, IK10	IP67, IK10	-
Angle Adjustment	Pan: 0° to 355°, tilt: 0° to 75°, rotate: 0° to 355°	Pan: 0° to 355°, tilt: 0° to 75°, rotate: 0° to 355°	Pan: 0° to 355°, tilt: 0° to 75°, rotate: 0° to 355°	-
Operating Temperature	-30 °C to +60 °C (-22 °F to +140 °F)	-30 °C to +60 °C (-22 °F to +140 °F)	-30 °C to +60 °C (-22 °F to +140 °F)	-10 °C to 50 °C (14 °F to 122 °F)
Operating Humidity	95% or less	95% or less	95% or less	95% or less
Local Storage	128 GB	128 GB	128 GB	128 GB
Audio I/O	With -S model: 1 in, 1 out	With -S model: 1 in, 1 out	With -S model: 1 in, 1 out	1 built-in mic, 1 line in, 1 out
Alarm I/O	With -S model: 1 in, 1 out	With -S model: 1 in, 1 out	With -S model: 1 in, 1 out	1 in, 1 out
Power Supply	12 VDC ± 25%, 10 W PoE (802.3af, 37 V to 57 V), 12 W	12 VDC ± 25%, 10 W PoE (802.3af, 37 V to 57 V), 12 W	12 VDC ± 25%, 10 W PoE (802.3af, 36 V to 57 V), 12 W	12 VDC ± 25%, 24 VAC ± 20%, 4.8 W; PoE (802.3af, class 3) 6 W



- Efficient H.265+ compression technology to save bandwidth and storage
- BLC/3D DNR/ROI/HLC
- 2 behavior analyses
- 3 Streams

	DS-2CD302160-I	DS-2CD312160-I	DS-2CD362160-IZ	DS-2CD372160-IZ
Model				
Image Sensor	1/2.8" Progressive Scan CMOS	1/2.8" Progressive Scan CMOS	1/2.8" Progressive Scan CMOS	1/2.8" Progressive Scan CMOS
Max. Resolution	1920 × 1080	1920 × 1080	1920 × 1080	1920 × 1080
Video Compression	H.265 / H.264 / MJPEG / H.264+ / H.265+	H.265 / H.264 / MJPEG / H.264+ / H.265+	H.265 / H.264 / MJPEG / H.264+ / H.265+	H.265 / H.264 / MJPEG / H.264+ / H.265+
Min. Illumination	Color: 0.028 lux @ (F2.0, AGC ON)	Color: 0.028 lux @ (F2.0, AGC ON)	Color: 0.018 lux @ (F1.6, AGC ON)	Color: 0.018 lux @ (F1.6, AGC ON)
WDR	Digital WDR	Digital WDR	Digital WDR	Digital WDR
Lens	2.8/4/6 mm	2.8/4/6 mm	2.7 to 13.5 mm	2.7 to 13.5 mm
FOV	2.8 mm: Horizontal FOV: 103°, vertical FOV: 59°, diagonal FOV: 118° 4 mm: Horizontal FOV: 89°, vertical FOV: 47°, diagonal FOV: 107° 6 mm: Horizontal FOV: 54°, vertical FOV: 31°, diagonal FOV: 62°	2.8 mm: Horizontal FOV: 112°, vertical FOV: 60°, diagonal FOV: 132° 4 mm: Horizontal FOV: 89°, vertical FOV: 47°, diagonal FOV: 107° 6 mm: Horizontal FOV: 54°, vertical FOV: 31°, diagonal FOV: 62°	Horizontal FOV: 100° to 35°, vertical FOV: 53.5° to 20°, diagonal FOV: 118° to 40.1°	Horizontal FOV: 100° to 35°, vertical FOV: 53.5° to 20°, diagonal FOV: 118° to 40.1°
Max. IR Range	Up to 30 m	Up to 30 m	Up to 40 m	Up to 40 m
VCA	Line crossing detection, intrusion detection	Line crossing detection, intrusion detection	Line crossing detection, intrusion detection	Line crossing detection, intrusion detection
Frame Rate	50 Hz: 25 fps (1920 × 1080, 1280 × 960, 1280 × 720) 60 Hz: 30 fps (1920 × 1080, 1280 × 960, 1280 × 720)	50 Hz: 25 fps (1920 × 1080, 1280 × 960, 1280 × 720) 60 Hz: 30 fps (1920 × 1080, 1280 × 960, 1280 × 720)	50 Hz: 25 fps (1920 × 1080, 1280 × 960, 1280 × 720) 60 Hz: 30 fps (1920 × 1080, 1280 × 960, 1280 × 720)	50 Hz: 25 fps (1920 × 1080, 1280 × 960, 1280 × 720) 60 Hz: 30 fps (1920 × 1080, 1280 × 960, 1280 × 720)
Multi-Streaming	3	3	3	3
Protection Level	IP67	IP67, IK10	IP67	IP67, IK10
Angle Adjustment	Pan: 0° to 360°, tilt: 0° to 180°, rotate: 0° to 360°	Pan: 0° to 355°, tilt: 0° to 70°	Pan: 0° to 360°, tilt: 0° to 90°, rotate: 0° to 360°	Pan: 0° to 355°, tilt: 0° to 70°, rotate: 0° to 355°
Operating Temperature	-30 °C to 60 °C (-22 °F to 140 °F)	-30 °C to 60 °C (-22 °F to 140 °F)	-30 °C to 60 °C (-22 °F to 140 °F)	-30 °C to 60 °C (-22 °F to 140 °F)
Operating Humidity	95% or less	95% or less	95% or less	95% or less
Local Storage	-	-	256 GB	256 GB
Audio I/O	-	-	-	-
Alarm I/O	-	-	-	-
Power Supply	12 VDC ± 25%; PoE (802.3af, class 3), 7 W	12 VDC ± 25%; PoE (802.3af, class 3), 6.5 W	12 VDC ± 25%; PoE (802.3af, class 3), 12.9 W	12 VDC ± 25%; PoE (802.3af, class 3), 12 W