

# VANDAL-PROOF Access Control Terminals

Unified Security with Robust Protection



Access Control



Video Intercom



Video Security

**DS-K1T502 Series**

**HIKVISION®**



### All-in-one

management with one device



### Robust

IP65 & IK09 protections



### Flexible

authentication methods to choose from

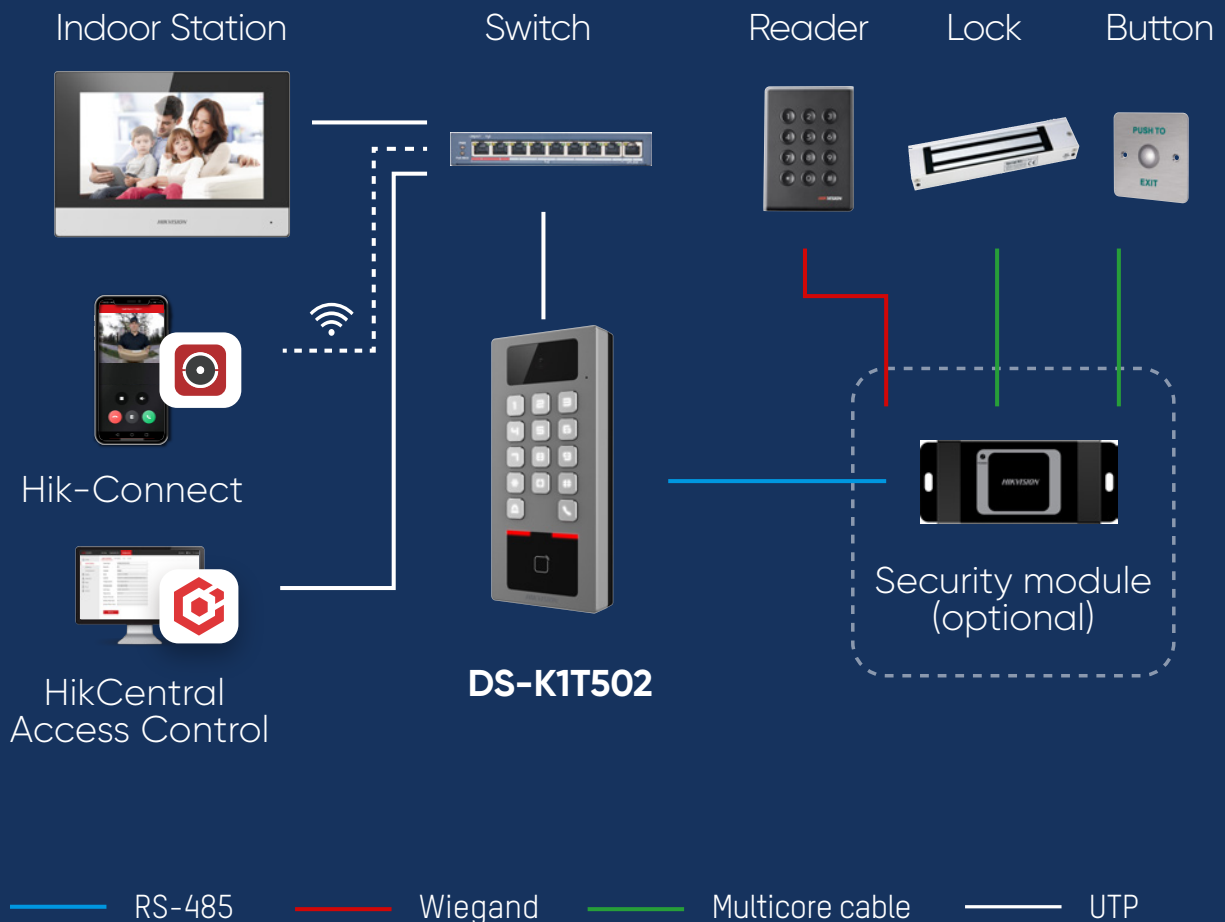


### Remote control

via Hik-Connect App



# How it works



# Product *highlights*

## All-in-one Management

1

Flexible access control management, with **multiple authentication methods** to choose from



Card



PIN code



Fingerprint



Bluetooth



2

Convenient video intercom via **indoor stations** or mobile **Hik-Connect** App

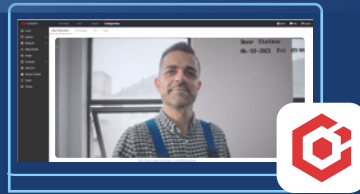


**3** Remotely check **live view** via

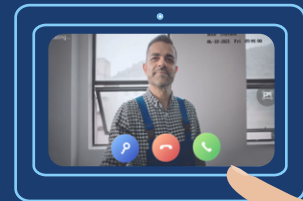
## All-in-one Management



Hik-Connect  
mobile App



HikCentral Access Control  
Platform



Indoor Station

## Higher Protection Levels

**1** Ideal choice for  
**outdoor environments**

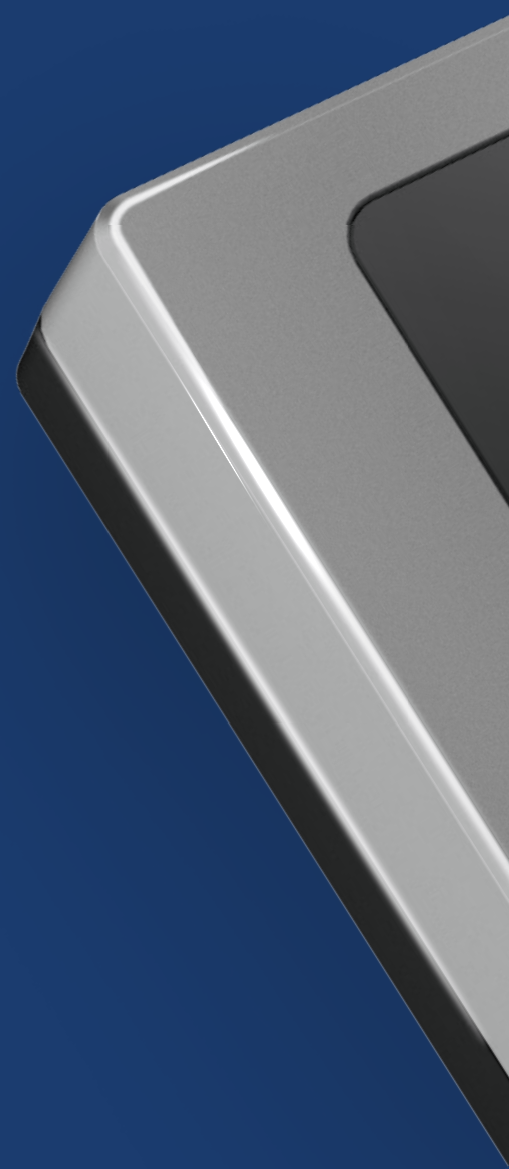


**IP65**  
waterproof



**IK09**  
vandal-proof

**2** **Industry-leading zinc materials**  
for increased stability





# Easy to Manage and Operate



Convenient configuration – **web configuration supported**



Easy operation via mobile **Hik-Connect App**



Receive visitor's call from anywhere, any time

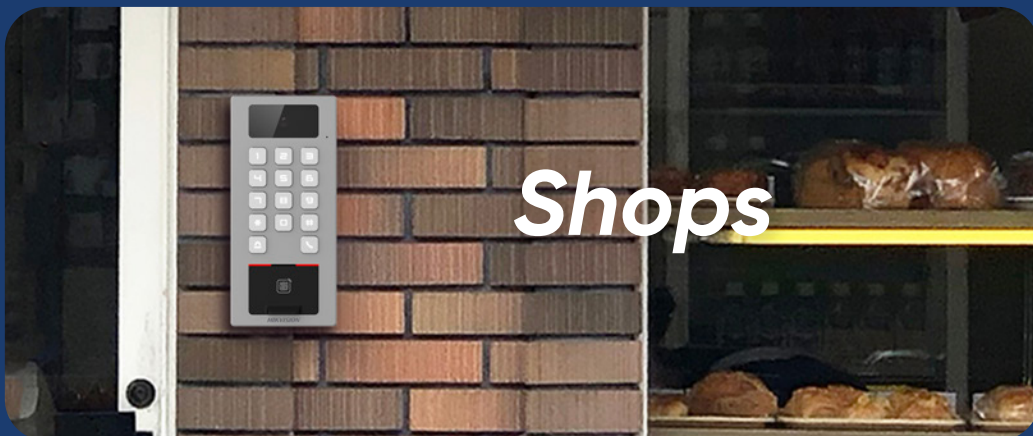


Remote control such as unlock doors and check live view



Bind / unbind current Hik-Connect account flexibly

# ***Application Scenarios***



# Product Showcase



Pixel	-	2MP
Operation system	Linux	
Card type	M1 card DESFire	
Card capacity	100,000	
Fingerprint capacity	10,000 (optional)	
Event capacity	300,000	
Power supply	1A/DC12V-DC24V	
Communication	Wi-Fi RS-485, Wiegand Bluetooth	
Installation	Wall Mounting	
Protection level	IP65, IK09	
Languages	Arabic, English, French, Indonesian, Italian, Brazilian Portuguese, Russian, European Spanish, Thai, Ukrainian, Vietnamese	

**VANDAL-PROOF**  
**Access Control Terminals**  
Unified Security with Robust Protection



[www.hikvision.com](http://www.hikvision.com)  
[support@hikvision.com](mailto:support@hikvision.com)



**HIKVISION®**