

Title:	DS-PWA32 How to Add Wireless output Expander and Configure	Version:	v1.0	Date:	05/09/2019
Product:	AX Series Wireless Security Control Panel			Page:	1 of 5

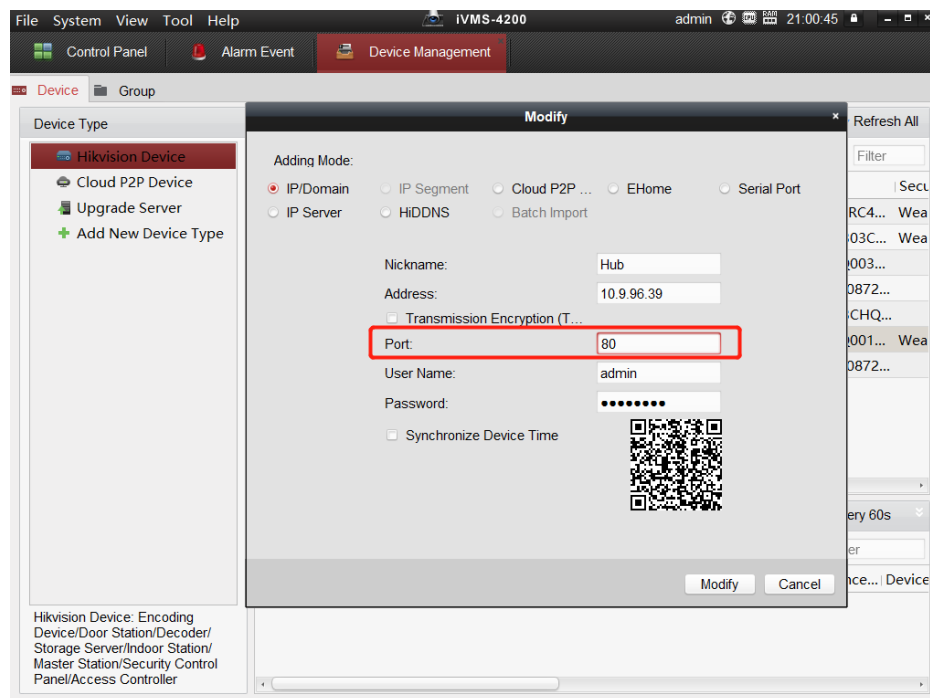
Preparation

1. AX Series Wireless Security Control Panel, V1.0.2 or above
2. iVMS-4200 client: 2.8.2.2

How to configure Alarm triggered Pop-out Image

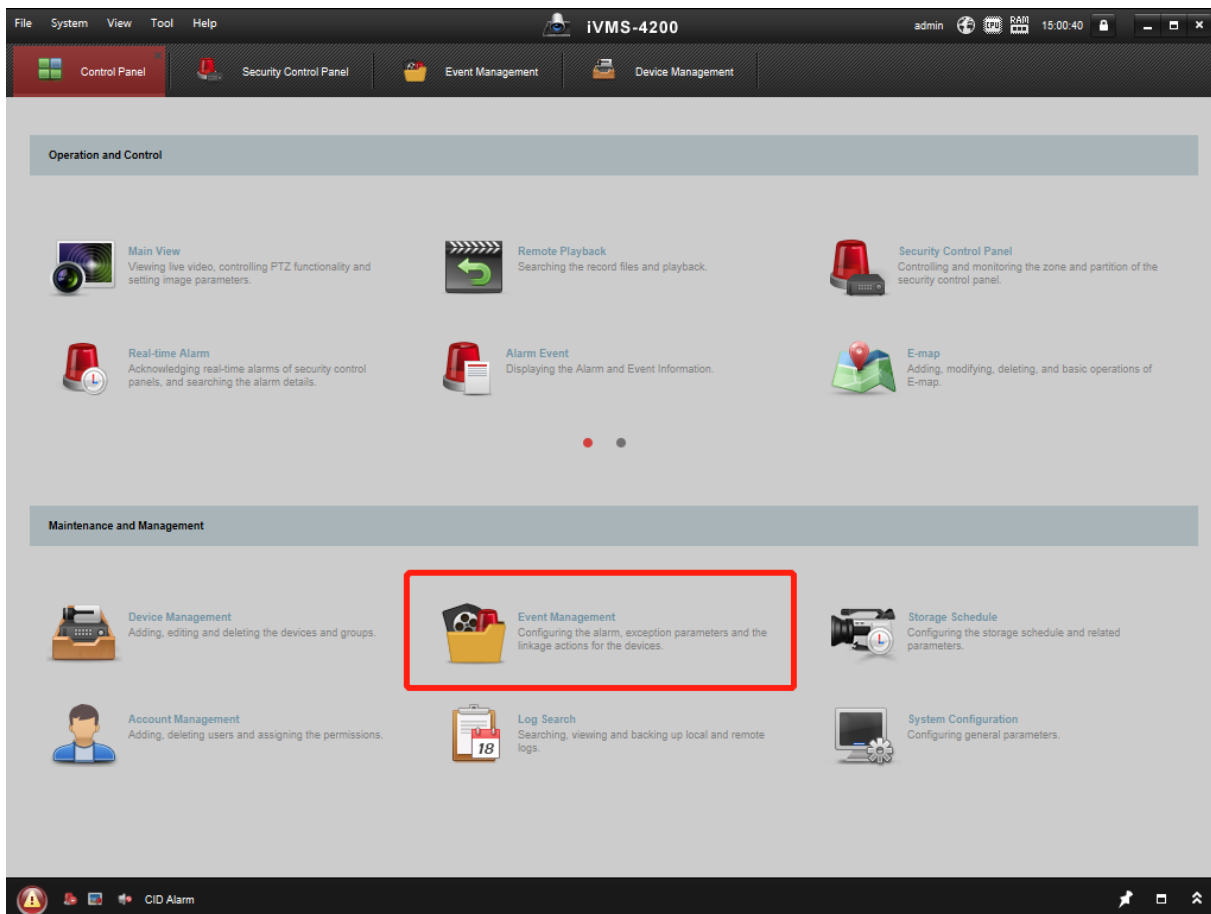
1. Add the Hub to iVMS-4200

Use Port: **80**



2. Open Event Management

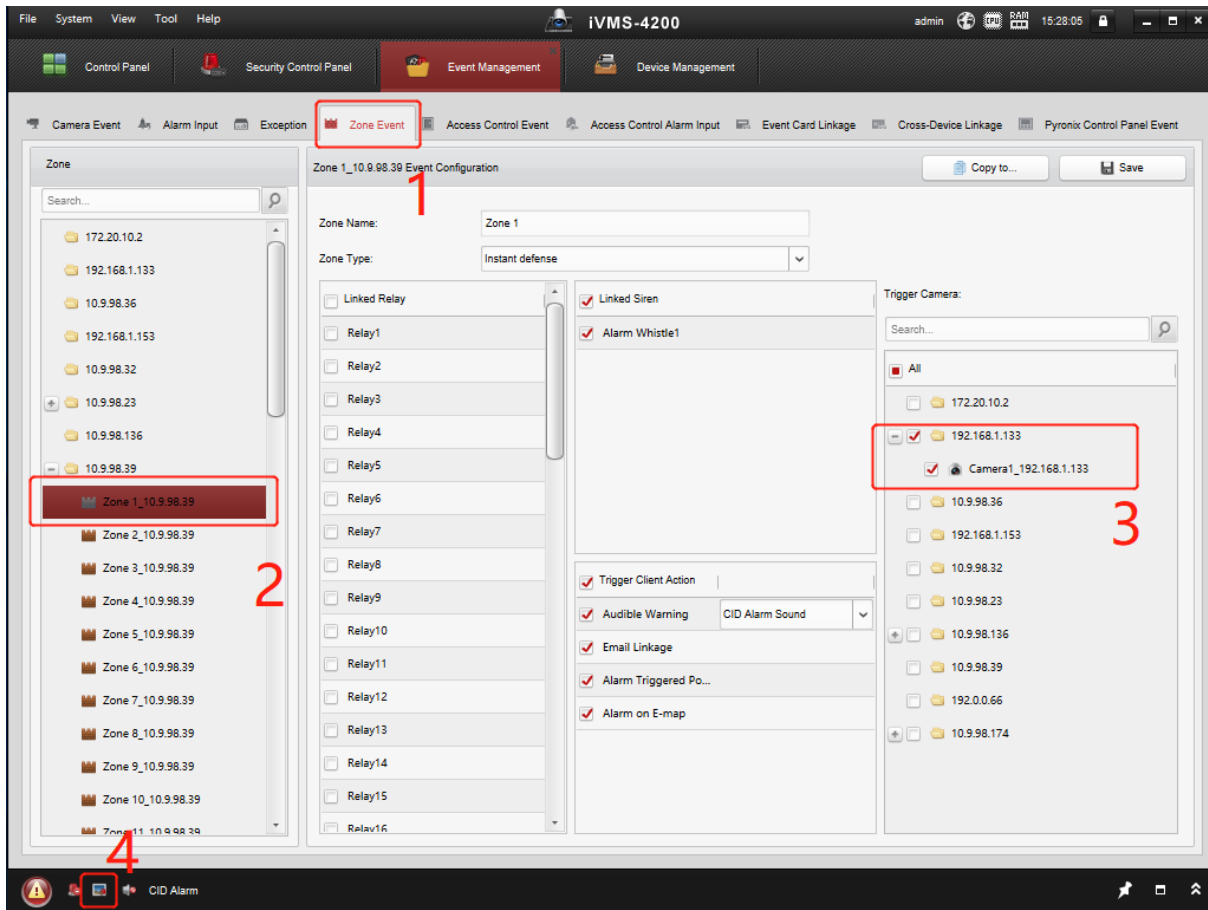
Title:	DS-PWA32 How to Add Wireless output Expander and Configure	Version:	v1.0	Date:	05/09/2019
Product:	AX Series Wireless Security Control Panel			Page:	2 of 5



3. Configure Event Management

- 1) Select **Zone Event**.
- 2) Select Panel zone which you need link to camera.
- 3) Choose the camera.
- 4) Enable the Alarm Triggered Pop-out Image.
- 5) Click save.

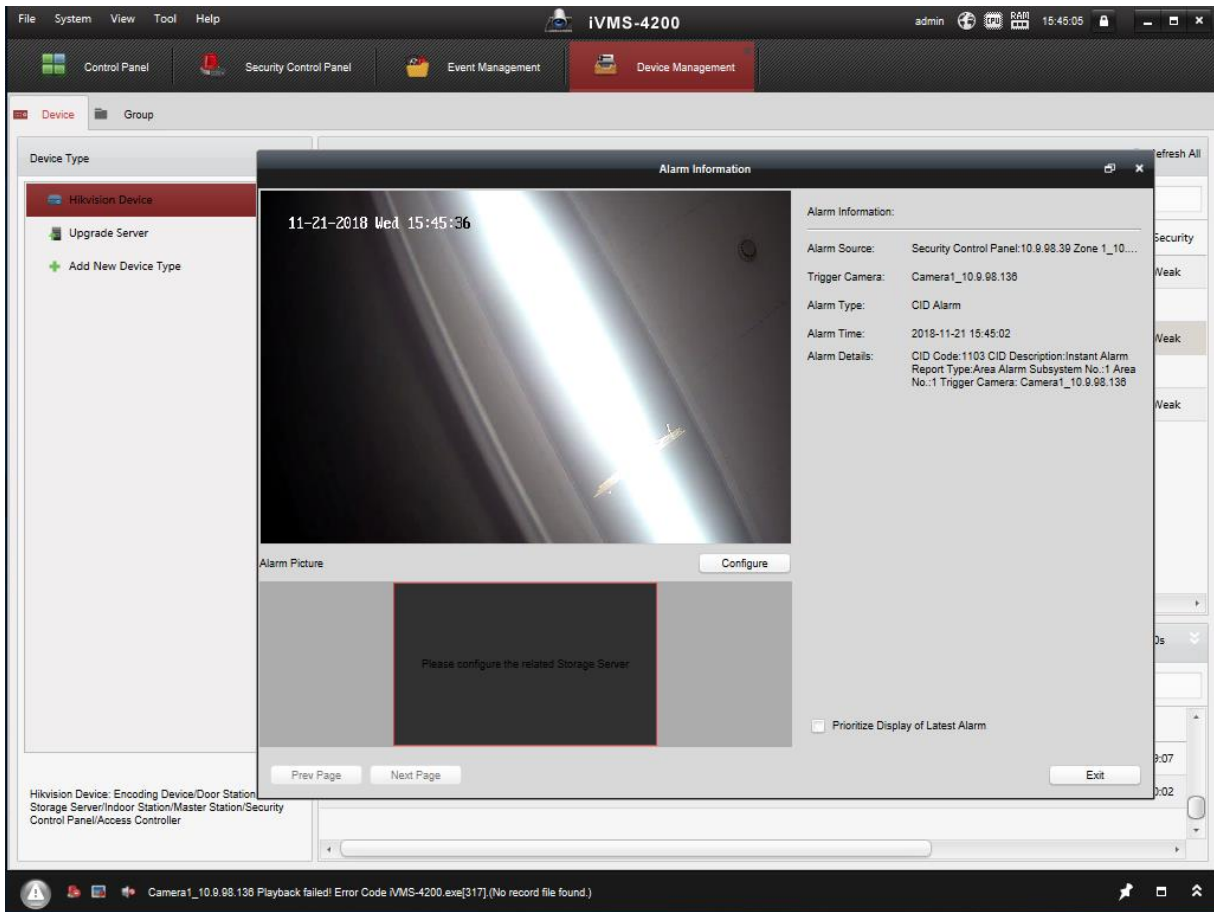
Title:	DS-PWA32 How to Add Wireless output Expander and Configure	Version:	v1.0	Date:	05/09/2019
Product:	AX Series Wireless Security Control Panel			Page:	3 of 5



4. Result test

- 1) Trigger the zone 1.
- 2) You can see the Pop-out Image---Alarm information, as below.

Title:	DS-PWA32 How to Add Wireless output Expander and Configure	Version:	v1.0	Date:	05/09/2019
Product:	AX Series Wireless Security Control Panel			Page:	4 of 5





Title:	DS-PWA32 How to Add Wireless output Expander and Configure	Version:	v1.0	Date:	05/09/2019
Product:	AX Series Wireless Security Control Panel			Page:	5 of 5

First Choice for Security Professionals
***HIKVISION* Technical Support**