

ColorVu Camera



DS-2CD2087G2-L(U)
8 MP 1/1.2" ColorVu Bullet Network Camera

- 0.0005 lux @ F1.0
- 2.8, 4 or 6 mm fixed lens
- Colorful imaging 24/7
- Human/vehicle classification
- H.265+/H.265
- IP67
- 130 dB WDR
- -U: built-in microphone

AcuSense



DS-2CD2047G2-L(U)
4 MP 1/1.8" ColorVu Bullet Network Camera

- 0.0005 lux @ F1.0
- 2.8, 4 or 6 mm fixed lens
- Colorful imaging 24/7
- Human/vehicle classification
- H.265+/H.265
- IP67
- 130 dB WDR
- -U: built-in microphone

AcuSense



DS-2CD2027G2-L(U)
2 MP 1/2.8" ColorVu Bullet Network Camera

- 0.0005 lux @ F1.0
- 2.8, 4 or 6 mm fixed lens
- Colorful imaging 24/7
- Human/vehicle classification
- H.265+/H.265
- IP67
- 120 dB WDR
- -U: built-in microphone

AcuSense



DS-2CD2147G2-(SU)
4 MP 1/1.8" ColorVu Dome Network Camera

- 0.0005 lux @ F1.0
- 2.8 or 4 mm fixed lens
- Colorful imaging 24/7, with dim environmental light requirement
- Human/vehicle classification
- H.265+/H.265
- IP67, IK10
- 130 dB WDR
- -SU: built-in microphone, alarm I/O 1/1, audio I/O 1/1

AcuSense



DS-2CD2127G2-(SU)
2 MP 1/2.8" ColorVu Dome Network Camera

- 0.0005 lux @ F1.0
- 2.8 or 4 mm fixed lens
- Colorful imaging 24/7, with dim environmental light requirement
- Human/vehicle classification
- H.265+/H.265
- IP67, IK10
- 120 dB WDR
- -SU: built-in microphone, alarm I/O 1/1, audio I/O 1/1

AcuSense



DS-2CD2347G2-L(U)
4 MP 1/1.8" ColorVu Turret Network Camera

- 0.0005 lux @ F1.0
- 2.8 or 4 mm fixed lens
- Colorful imaging 24/7
- Human/vehicle classification
- H.265+/H.265
- IP67
- 130 dB WDR
- -U: built-in microphone

AcuSense



DS-2CD2327G2-L(U)
2 MP 1/2.8" ColorVu Turret Network Camera

- 0.0005 lux @ F1.0
- 2.8 or 4 mm fixed lens
- Colorful imaging 24/7
- Human/vehicle classification
- H.265+/H.265
- IP67
- 120 dB WDR
- -U: built-in microphone

AcuSense



DS-2CD2T87G2-L
8 MP 1/1.2" ColorVu Bullet Network Camera

- 0.0005 lux @ F1.0
- 2.8, 4 or 6 mm fixed lens
- Colorful imaging 24/7
- Human/vehicle classification
- H.265+/H.265
- IP67
- 130 dB WDR

AcuSense



DS-2CD2T47G2-L
4 MP 1/1.8" ColorVu Bullet Network Camera

- 0.0005 lux @ F1.0
- 2.8, 4 or 6 mm fixed lens
- Colorful imaging 24/7
- Human/vehicle classification
- H.265+/H.265
- IP67
- 130 dB WDR

AcuSense



DS-2CD2T27G2-L
2 MP 1/2.8" ColorVu Bullet Network Camera

- 0.0005 lux @ F1.0
- 2.8, 4 or 6 mm fixed lens
- Colorful imaging 24/7
- Human/vehicle classification
- H.265+/H.265
- IP67
- 120 dB WDR

AcuSense



Headquarters
No.555 Qianmo Road, Binjiang District,
Hangzhou 310051, China
T +86-571-8807-5998
overseasbusiness@hikvision.com



ColorVu Network Cameras

View in Color, Even in Darkness

ColorVu

24/7 Colorful Imaging

Now Enhanced by **4K** and **AcuSense**



HIKVISION®

www.hikvision.com

With New ColorVu Network Cameras, You'll Enjoy

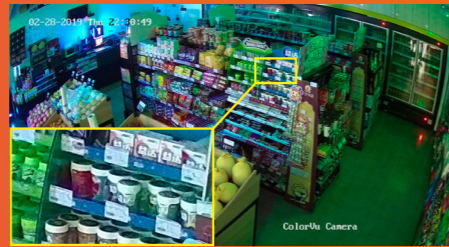
Images shot by ColorVu camera were with supplementary light OFF

True Color Information

- Accurate color rendering
- Excellent performance in low-light environments



Unable to identify color



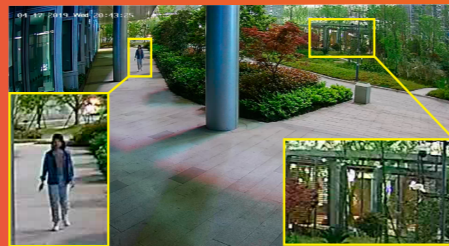
Accurate color

Better Visual Experience

- Balanced brightness
- F1.0 super aperture and advanced sensor guarantee realistic rendering



Blurry



Sharp

24/7 Color Imaging with Target Classification

ColorVu cameras capture human and vehicle targets with vivid details, providing video coverage with more useful information.

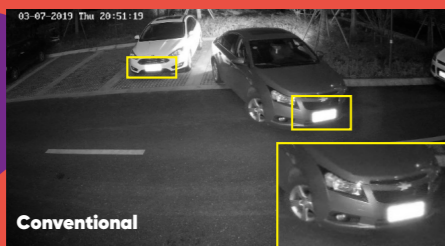
* Conventional camera images shown were shot with IR on and ColorVu camera images without supplemental light.



Conventional



ColorVu



Conventional



ColorVu

Combining Great Technologies for Great Image Quality and Usability

Advanced Hardware

- F1.0 super large aperture
- Advanced sensor

Reliable Quality

- Active alignment technology guarantees the focusing performance in the mass production of ultra high definition ColorVu products, realizing good quality control.

Frontier ISP Technology

- Precise color rendition and image reproduction with frontier image signal processing algorithm

Embedded Deep Learning Chip

- Supports AcuSense algorithm with human/vehicle classifications



NVR



DS-7732NI-14/24P
32-Channel NVR with 4 HDDs

- Up to 32 video channels
- Decoding formats: supporting H.265/H.265+/H.264/H.264+/MPEG4
- Bandwidth: 320 Mbps incoming, 256 Mbps outgoing
- 16-ch 1080p decoding
- 2 HDMI, 1 VGA and 1 CVBS output
- eSATA by default
- 24 PoE ports
- 1.5U chassis



DS-7732NI-14(/16P)(B)
32-Channel NVR with 4 HDDs

- Up to 32 video channels
- Decoding formats: supporting H.265/H.265+/H.264/H.264+/MPEG4
- Bandwidth: 256 Mbps incoming, 256 Mbps outgoing
- 16-ch 1080p decoding
- 2 HDMI, 1 VGA and 1 CVBS output
- eSATA by default
- 16 PoE ports with the 16P model (optional)
- 1.5U chassis



DS-7716NI-14(/16P)(B)
16-Channel NVR with 4 HDDs

- Up to 16 video channels
- Decoding formats: supporting H.265/H.265+/H.264/H.264+/MPEG4
- Bandwidth: 160 Mbps incoming, 256 Mbps outgoing
- 16-ch 1080p decoding
- 2 HDMI, 1 VGA and 1 CVBS output
- eSATA by default
- 16 PoE ports with the 16P model (optional)
- 1.5U chassis



DS-7616NI-12(/16P)
16-Channel NVR with 2 HDDs

- Up to 16 video channels
- Decoding formats: supporting H.265/H.265+/H.264/H.264+/MPEG4
- Bandwidth: 160 Mbps incoming, 256 Mbps outgoing
- 16-ch 1080p decoding
- 1 HDMI, 1 VGA and 1 CVBS output
- 16 PoE ports with the 16P model (optional)
- 1U chassis



DS-7608NI-12(/8P)
8-Channel NVR with 2 HDDs

- Up to 8 video channels
- Decoding formats: supporting H.265/H.265+/H.264/H.264+/MPEG4
- Bandwidth: 80 Mbps incoming, 256 Mbps outgoing
- 16-ch 1080p decoding
- 1 HDMI, 1 VGA and 1 CVBS output
- 8 PoE ports with the 8P model (optional)
- 1U chassis