

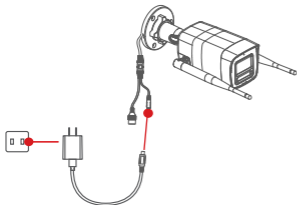
Activate and Access via Hik-Connect (Recommended)

- 1** Scan the QR code to download and install Hik-Connect.



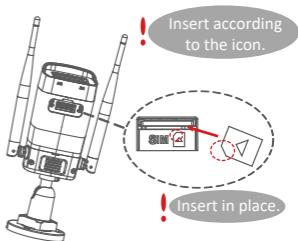
Register and log in to your account.

- 3** Power on the device.



Connect the power adapter with the power cable.

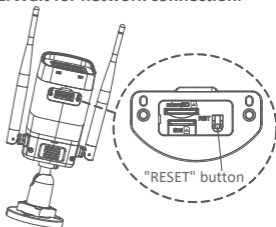
- 2** Insert the SIM card.



Insert according to the icon.

Insert in place.

- 4** 1. After hearing the voice message for pressing the "RESET" button, press and hold the "RESET" button until the device is activated.
2. Wait for network connection.

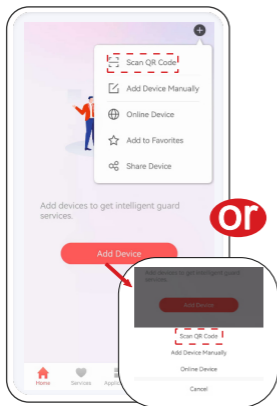


"RESET" button

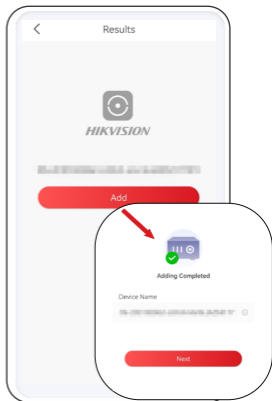
If network connection timed out, check the SIM card or network status.

**Product appearance is for reference only and may differ from the actual product.*

5 Scan the QR code on the device to add the device.



6 Check the indicator status, confirm and complete device adding.



**Due to the app version upgrade, the user interface may differ.*