

DS-TL2000A-L1(PAK) Supplement Light



DS-TL2000A-L1(PAK) is a supplement light with high beam LED light source and patented design of the lamp cooling structure and a constant current drive control. The products can be widely used in electronic police, security surveillance, speed detection, toll stations, entrance & exit control and road monitoring system. Key features including:

- Adopt aluminum alloy light body, fin-type radiator, and high light transmission with tempering glass.
- High beam LED chips with long lifespan, good stability and high luminous efficiency.
- Professional optical design, light uniformity and target spot distinct.
- Adopt advanced constant current drive technology, which make the current control accurate and stable, enhance the product reliability and reduce the light attenuation effectively.
- Support camera false triggering protection, automatic protection initiation at the abnormal triggering signal and automatic recovery.
- The novelty design of the light, such as small size, light weight and high adaptability, make it quite easy for installation and adjustment.
- The IP65 design make it waterproof and dustproof unfailingly
- Green environmental protection without harmful metal such as mercury and lead.

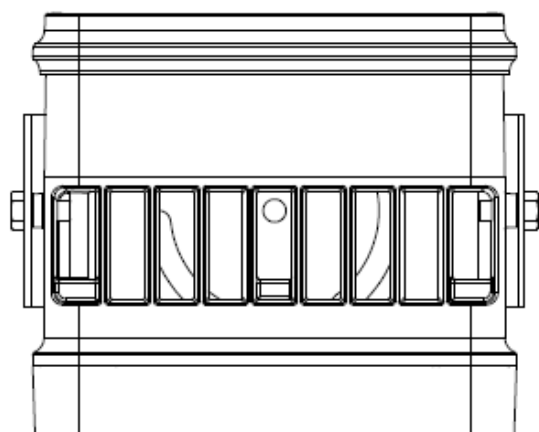
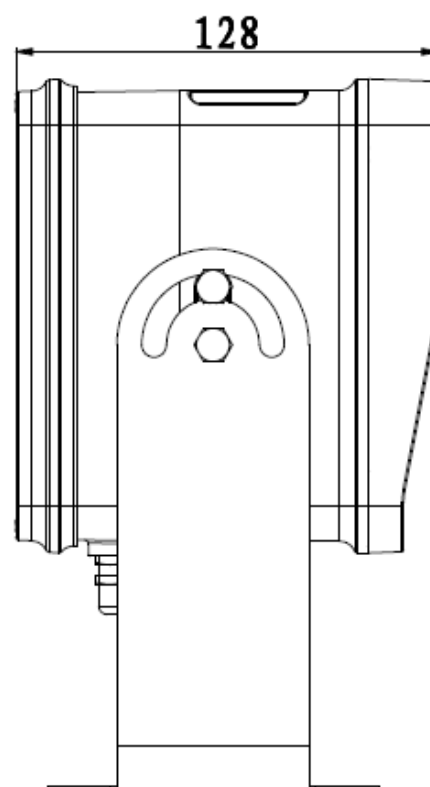
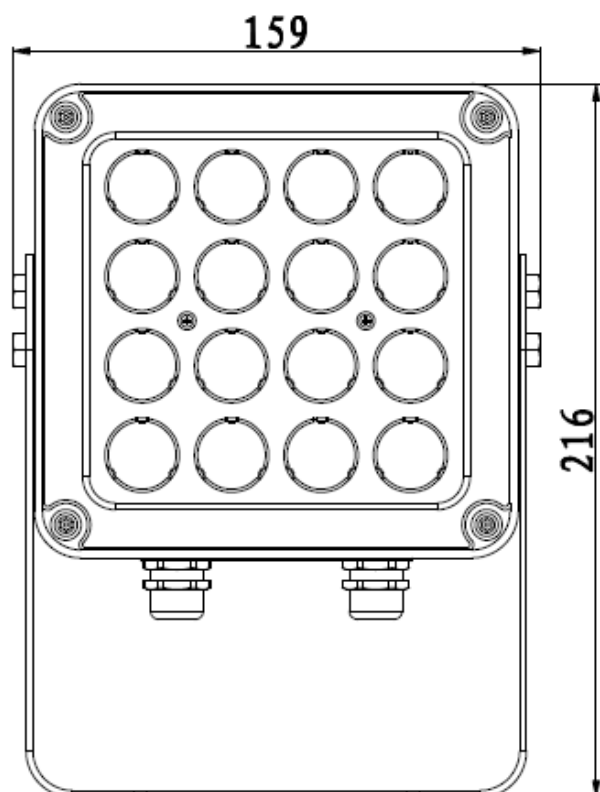
Specification

| Supplement Light | |
|-------------------------------------|---|
| Light Type | High-power white light LED |
| LED Lamp Beads | 16 |
| Color Temperature | 2500K to 3500K |
| Angle of Light | 10° |
| Coverage | Single lane |
| Effective Distance | 16-25 m |
| Trigger Manner | TTL level (switch trigger optional) |
| Trigger Level | 4 to 6 V (High level trigger) |
| Trigger Frequency | 15 to 250 Hz |
| Trigger Duty Ratio | 1% to 39% (Enter the protection state at Duty Radio \geq 40%) |
| Response Time | \leq 20 us |
| Day and Night Function | Support ambient brightness detection, and automatic start-up at low illumination (optional) |
| RS-485 | 1-ch, supporting PC or camera connection (optional) |
| Synchronous Interface | 1-ch flicker trigger input, 1-ch capture trigger input, and 1-ch synchronous flicker output (optional) |
| Parameter Configuration | Supports internal parameter settings, such as turn-on threshold of day and night function, flash, and ultra-high frequency flash delay setting. |
| Service Life | \geq 50000 H |
| Housing Material | Die-cast aluminum |
| Power Supply | 220 VAC \pm 20%, 47 to 63 Hz; 110 VAC \pm 20%, 47 to 63 Hz |
| Consumption | Max. 36 W (Determined by control model) |
| Operating Temperature | -40 °C to 70 °C (-40 °F to 158 °F) |
| Operating Humidity | 10% to 90%, no condensation |
| Weather Proof Rating | IP65 |
| Dimension (W \times H \times D) | 128 \times 216 \times 159 mm (5.0 \times 8.5 \times 6.3 inch) |
| Mounting Model | Support front-mounted installation (bracket rotation angle: -90° to 90°) |
| Weight | 2.72 kg (6.00 lb) |

Available Model

DS-TL2000A-L1(PAK)

Dimension



Unit: mm

Headquarters

No.555 Qianmo Road, Binjiang District,
Hangzhou 310051, China
T +86-571-8807-5998
www.hikvision.com



Follow us on social media to get the latest product and solution information.

