

Title:	DS-PSG-WO-433 How to reset and connect	Version:	v1.0	Date:	19/12/2019
Product:	Alarm	Page:	1 of 4		



DS-PSG-WO-433

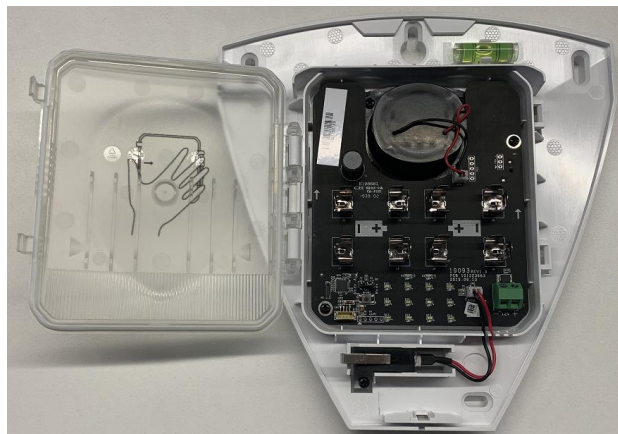
How to reset and connect

(2019-12-19)

Wireless outdoor siren parameters

RF distance	800 m (open area)
Power	4 CR123A Batteries (Battery powering mode by default) or 12 VDC
Buzzer	Decibel: 110 dB
Operation temperature	-25 °C to +60 °C (-13 °F to +140 °F)
Operation humidity	10% to 90% (no condensing)
Color	White and blue
Material	PC+ABS
Dimension (W × H × D)	220.5 × 205.2 × 46 mm (8.68" × 8.08" × 1.81")
Protection level	IP65
Installation	Wall mounting

Wireless outdoor siren appearance

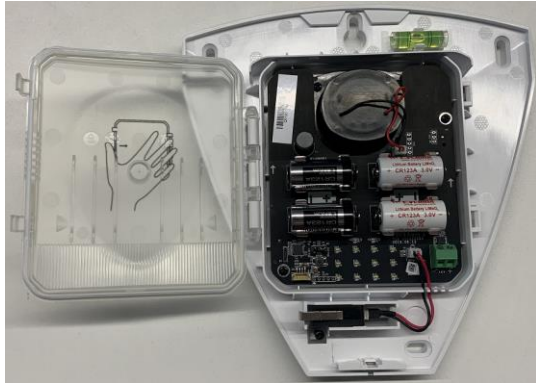


Title:	DS-PSG-WO-433 How to reset and connect	Version:	v1.0	Date:	19/12/2019
Product:	Alarm	Page:	2 of 4		

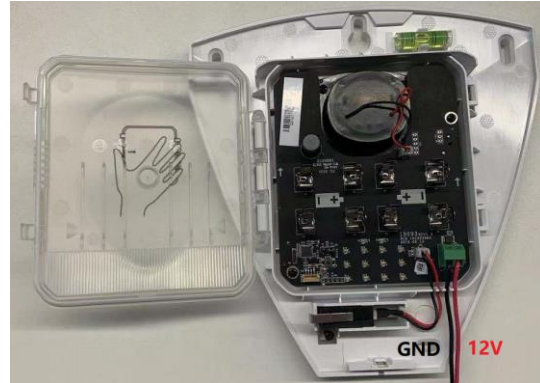


How to power the wireless outdoor siren

1. Powered by CR123A battery

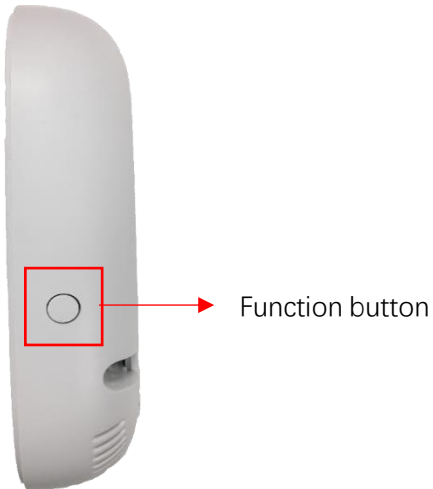


2. Powered by 12v 1A wire

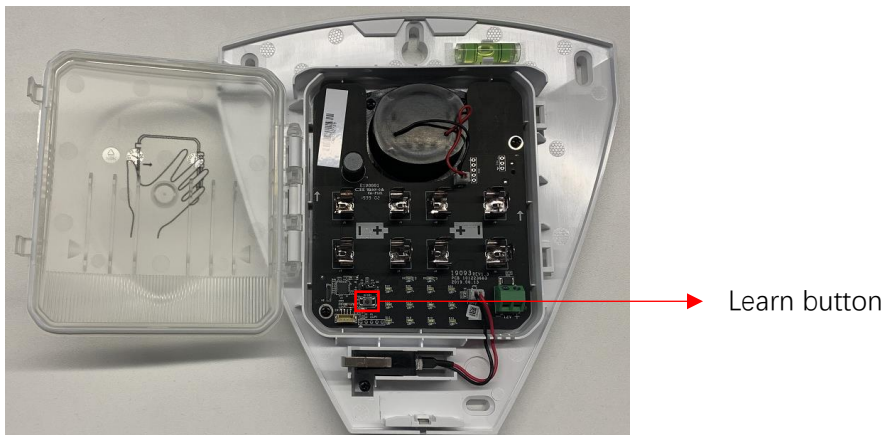


How to add wireless outdoor siren

1. Click the wireless security control panel function button



2. Power on the wireless outdoor siren, then Click the learn button



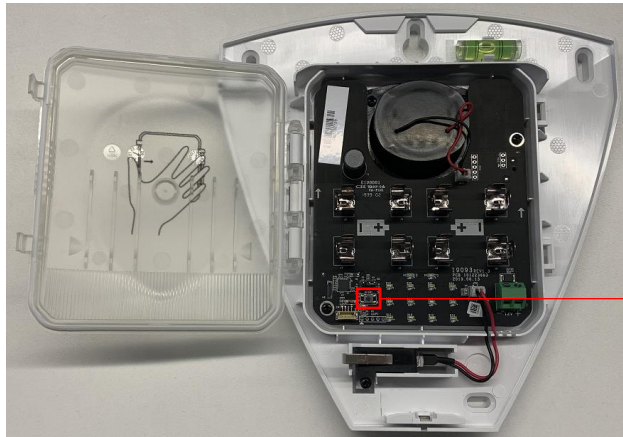
Title:	DS-PSG-WO-433 How to reset and connect	Version:	v1.0	Date:	19/12/2019
Product:	Alarm	Page:	3 of 4		

HIKVISION

3. Wireless security control panel will say 'The Siren 1 is added', the addition is successful
4. Click wireless security control panel function button again to finish the adding mode

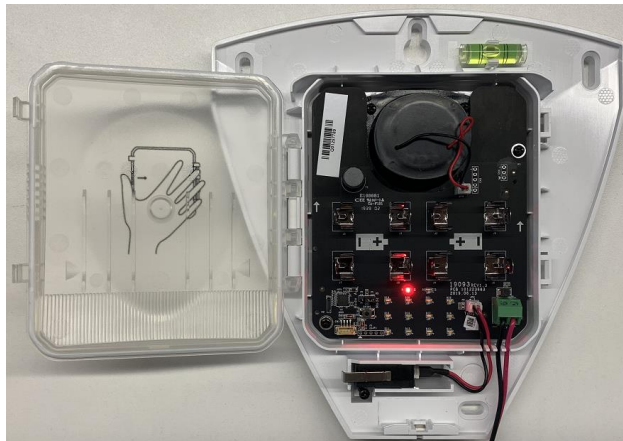
How to reset the wireless outdoor siren

1. Hold down learn button of wireless outdoor siren, and then power on the device



Learn button

2. Hold down the button, after red light flash 3 times, means reset successfully, as below



Title:	DS-PSG-WO-433 How to reset and connect	Version:	v1.0	Date:	19/12/2019
Product:	Alarm	Page:	4 of 4		



First Choice for Security Professionals

***HIK*VISION Technical Support**