

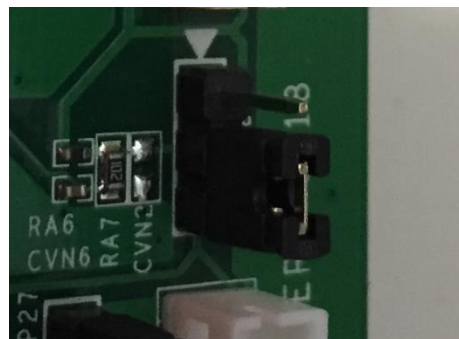
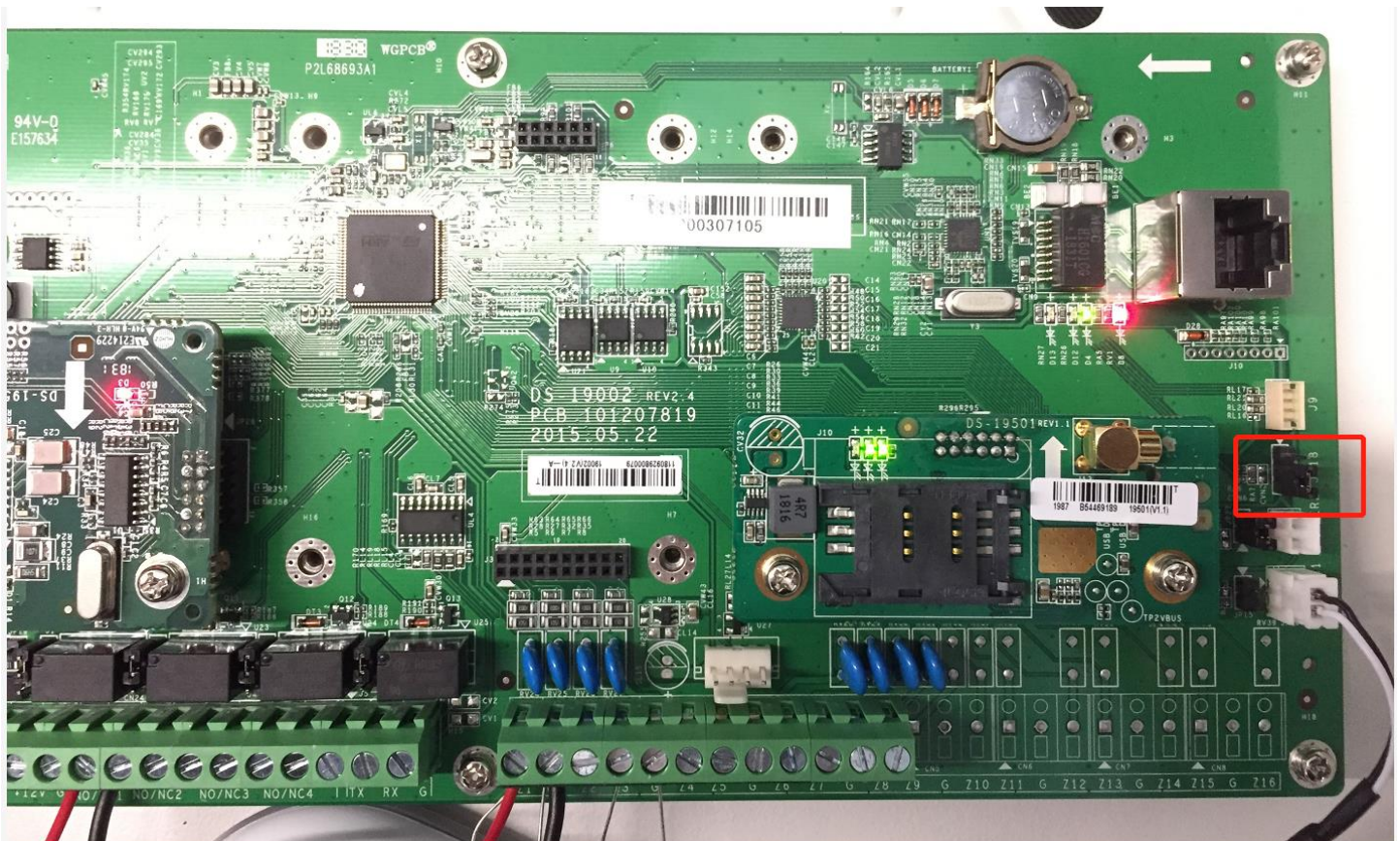
Title:	DS-19A How to Reset Panel by Reset Button	Version:	v1.0	Date:	11/20/2018
Product:	DS-19A Series Network Security Control Panel			Page:	1 of 3

Preparation

1. DS-19A series Network Security Control Panel or MBUS Security Control Panel

DS-19A How to Reset Panel by Reset Button

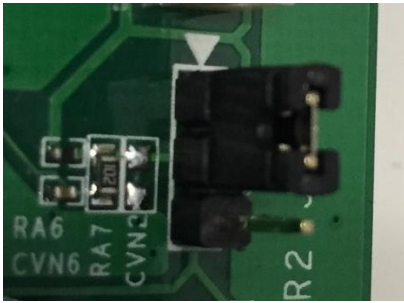
1. Find the Reset Button on Panel



Title:	DS-19A How to Reset Panel by Reset Button	Version:	v1.0	Date:	11/20/2018
Product:	DS-19A Series Network Security Control Panel			Page:	2 of 3

2. Hardware reset

- 1) Power off the panel, and open the box.
- 2) Move JP18 short-circuit cap from down to up. Like below picture.



- 3) Power up the panel, after panel starting normal, then power off.
- 4) Move JP18 short-circuit cap to original position
- 5) Then close the box, and power up the panel.
- 6) Reset finished, panel is inactive status now.

Note

Default Installation password: 012345

Default User password: 1234



Title:	DS-19A How to Reset Panel by Reset Button	Version:	v1.0	Date:	11/20/2018
Product:	DS-19A Series Network Security Control Panel			Page:	3 of 3

First Choice for Security Professionals
HIKVISION Technical Support