

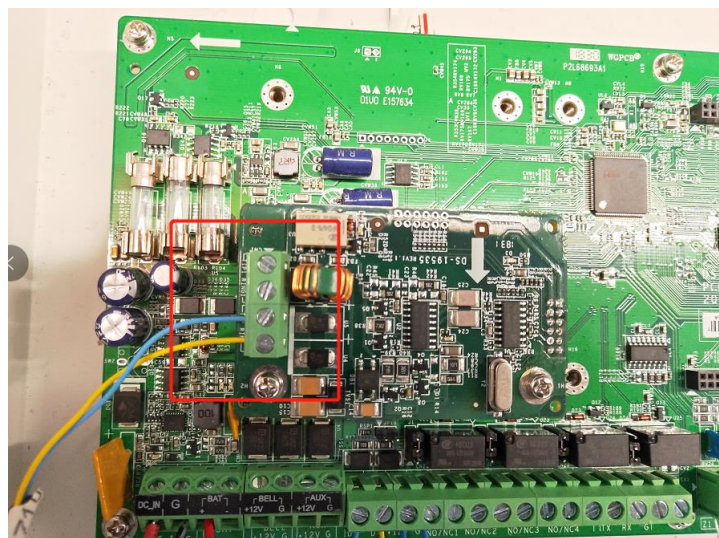
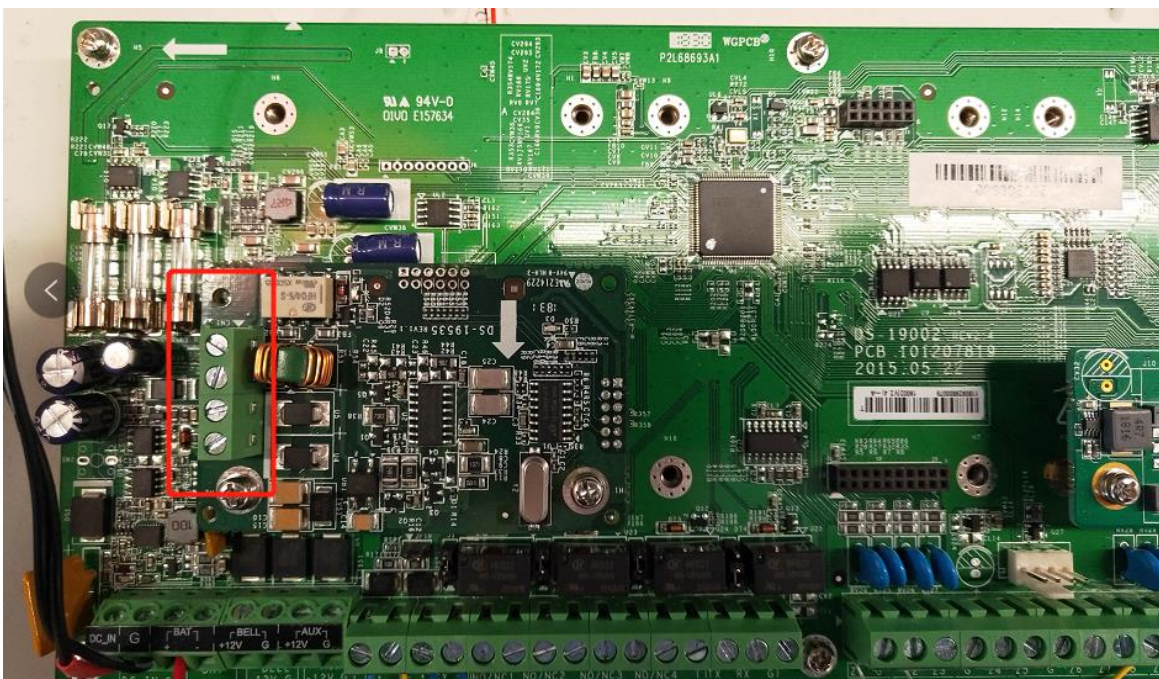
Title:	DS-19A How to connect PSTN to control Panel	Version:	v1.0	Date:	01/23/2019
Product:	DS-19A Series Network Security Control Panel			Page:	1 of 5

Preparation

1. DS-19A08-BNG Security Control Panel
2. PSTN module and Third-party Alarm receiver

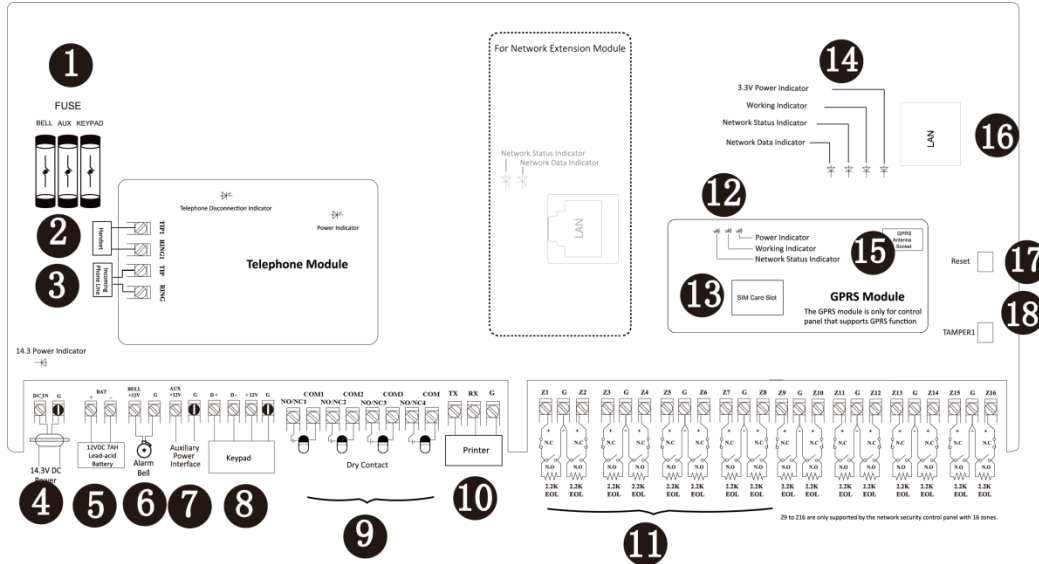
How to connect PSTN to control Panel

1. Find the port for PSTN module.



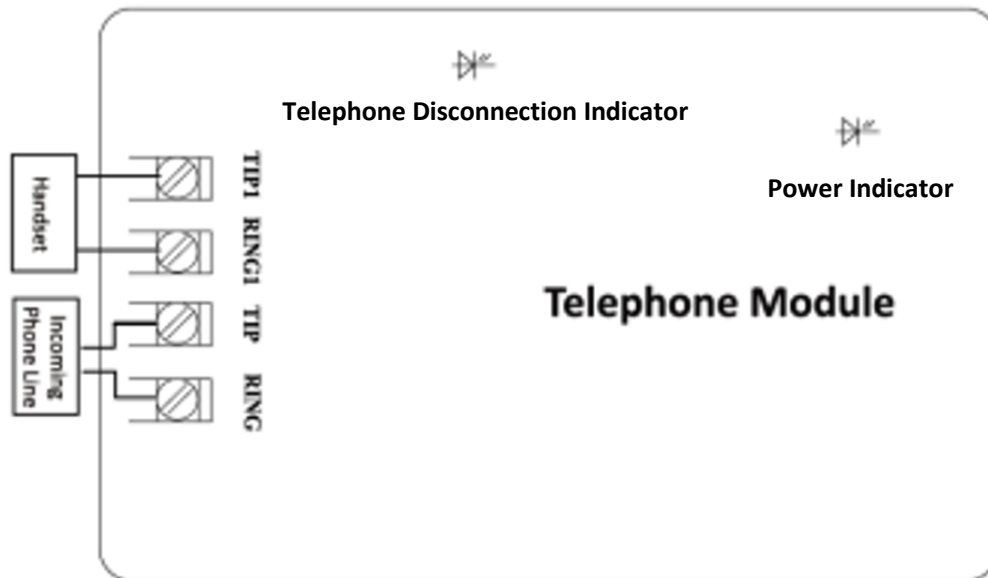
Title:	DS-19A How to connect PSTN to control Panel	Version:	v1.0	Date:	01/23/2019
Product:	DS-19A Series Network Security Control Panel			Page:	2 of 5

2. PSTN module connection.



② Handset Interface

③ Incoming Telco Line Interface

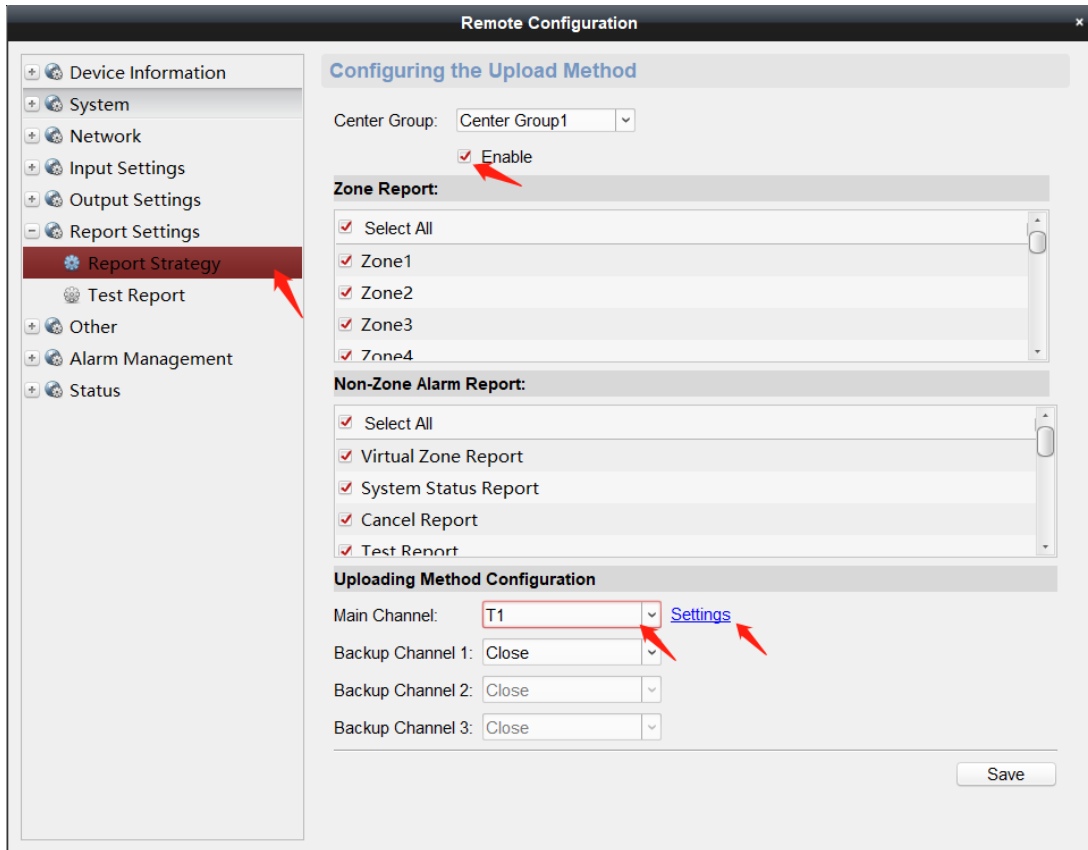


3. PSTN Configuration in iVMS-4200

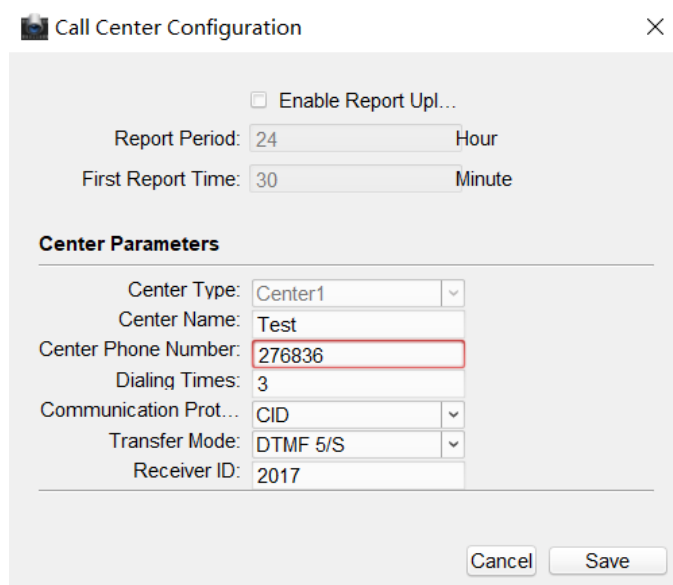
1) Report Setting---Report Strategy

Title:	DS-19A How to connect PSTN to control Panel	Version:	v1.0	Date:	01/23/2019
Product:	DS-19A Series Network Security Control Panel			Page:	3 of 5

- 2) Enable Center Group
- 3) Select Main Channel to T1.



- 4) Call Center Configuration.



Title:	DS-19A How to connect PSTN to control Panel	Version:	v1.0	Date:	01/23/2019
Product:	DS-19A Series Network Security Control Panel			Page:	4 of 5

Report Period: Means after the first test report is uploaded, how long is the interval to upload the next test report;

First Report Time: After the test report upload is enabled, how long is the interval to upload the first test report;

Center Type: Network Alarm control panel support two Telephone call center, you can send a report to two centers at the same time or set up a master to upload the report;

Center Name: User-defined alarm center name with a maximum length of 32;

Center Phone Number: Telephone number of the Center Alarm receiver;

Dialing Times: The number of times the Panel tries to call to the alarm center (support 1~15 times);

Communication Protocol: The protocol used to upload the alarm information. Support CID communication protocol;

Transfer Mode: Alarm signal transmission mode DTMF5/S (slow dialing) and DTMF10/S (fast dialing);

Receiver ID: Certification account number to contract to Alarm Receiver (4 bits.)

 **Note**

1. Most of time, only need set **Center Phone Number and Receiver ID**, other parameters remain default

4. Operation

- 1) First of all, use one phone to dial the Alarm Receiver Machine, to **ensure that the telephone line and Alarm Receiver Machine number is normal.**
- 2) Connect the telephone line to PSTN port.
- 3) Power on the panel, and configure **Center Phone Number and Receiver ID** in iVMS-4200.
- 4) Enter 1234Project901# in keypad to help see the status of calling process.
- 5) Arm the Panel and trigger one zone.
- 6) You will see **Off-hook----Alarm Connector Off-hook---Receive the Hand-shack Sound---Send CID Report---Alarm Connector On-hook**
- 7) Alarm center get the CID message, dialing finish.



Title:	DS-19A How to connect PSTN to control Panel	Version:	v1.0	Date:	01/23/2019
Product:	DS-19A Series Network Security Control Panel			Page:	5 of 5

First Choice for Security Professionals
***HIKVISION* Technical Support**