



## **How to Open the Door with QR Code in MinMoe Terminal**

<b>Title:</b>	How to open the door with QR code in MinMoe terminal	<b>Version:</b>	v1.0	<b>Date:</b>	28/01/2021
<b>Product:</b>	Access Control			<b>Page:</b>	1 of 4

## Preparation

This document displays guidance on how to configure QR code in IVMS4200 software and open door with it on MinMoe access control terminal.

# How to open the door with QR code in MinMoe terminal (Latest firmware version)

## 1. Set a QR Code for person

Add the device in 4200, add the person with QR code and apply the information of this person to device. (In this function, basically if we add the card, the system will automatically generate a QR code for this card which can be used to open the door.)

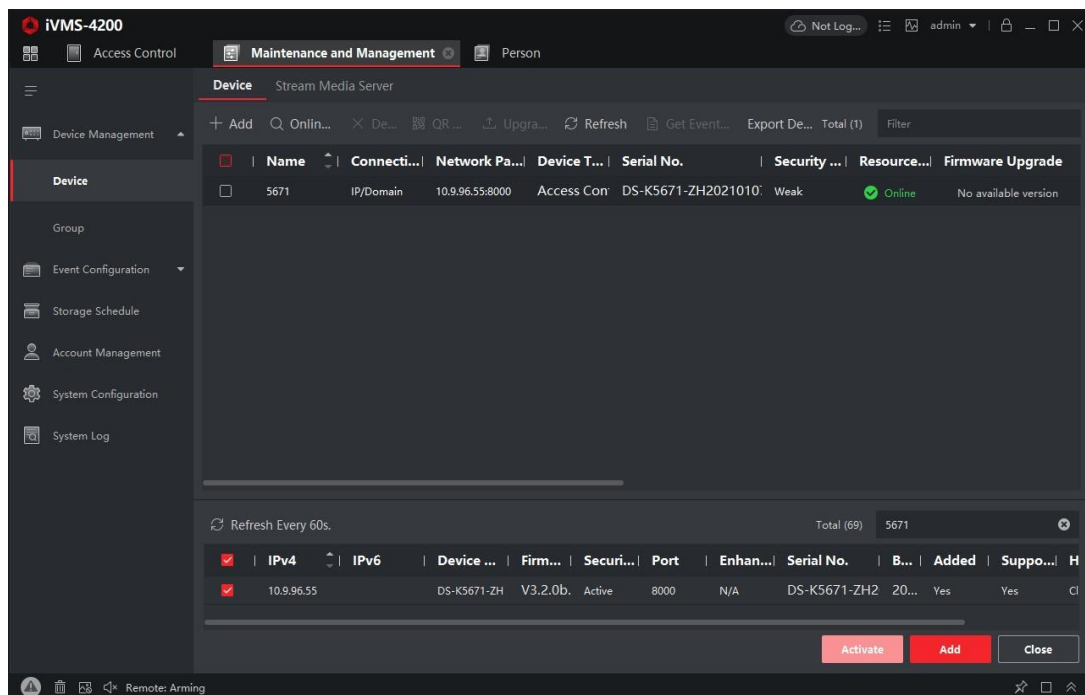


Fig. 1 add the device in 4200

<b>Title:</b>	How to open the door with QR code in MinMoe terminal	<b>Version:</b>	v1.0	<b>Date:</b>	28/01/2021
<b>Product:</b>	Access Control			<b>Page:</b>	2of 4

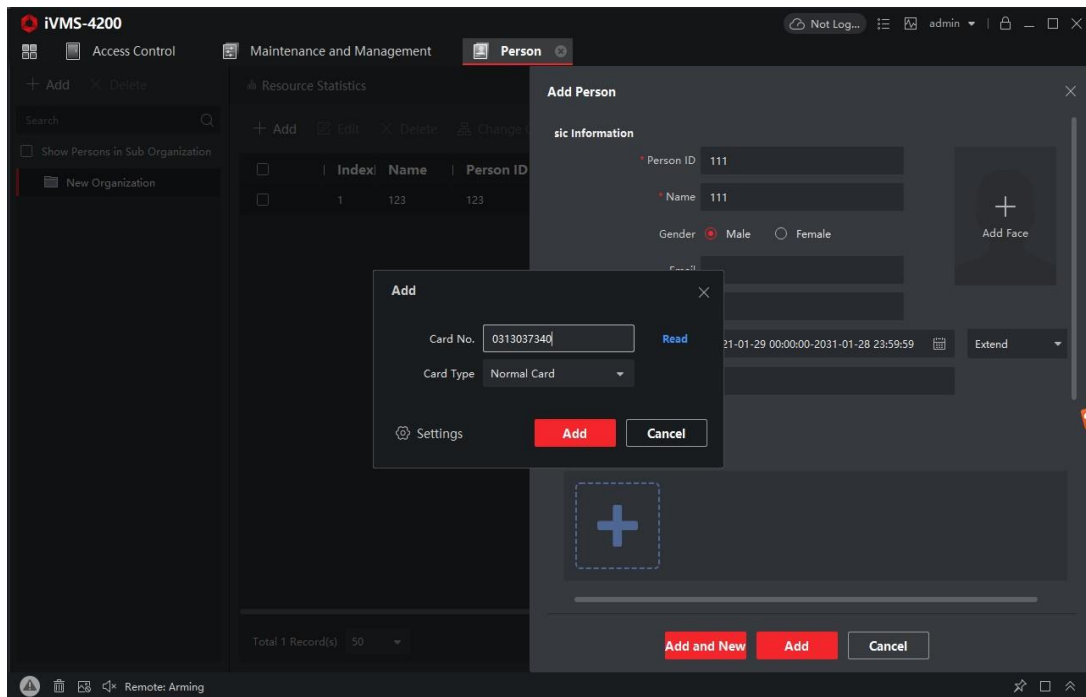


Fig. 2 add the person with his private card

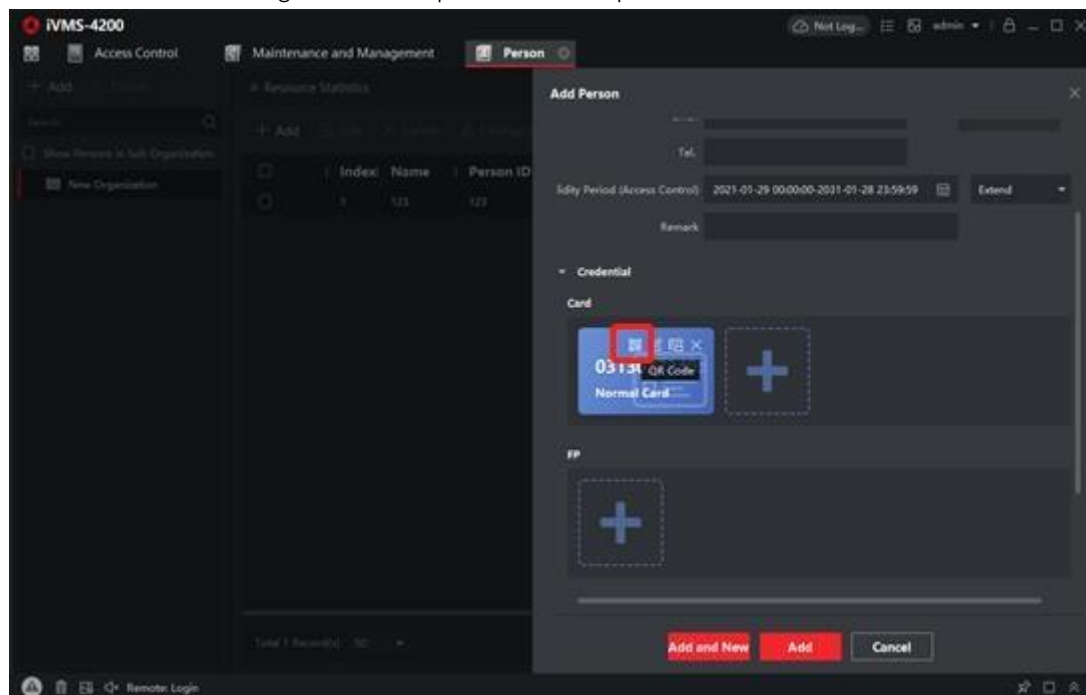


Fig. 3 automatically generate a QR code for this card (click the QR code)

<b>Title:</b>	How to open the door with QR code in MinMoe terminal	<b>Version:</b>	v1.0	<b>Date:</b>	28/01/2021
<b>Product:</b>	Access Control			<b>Page:</b>	3of 4

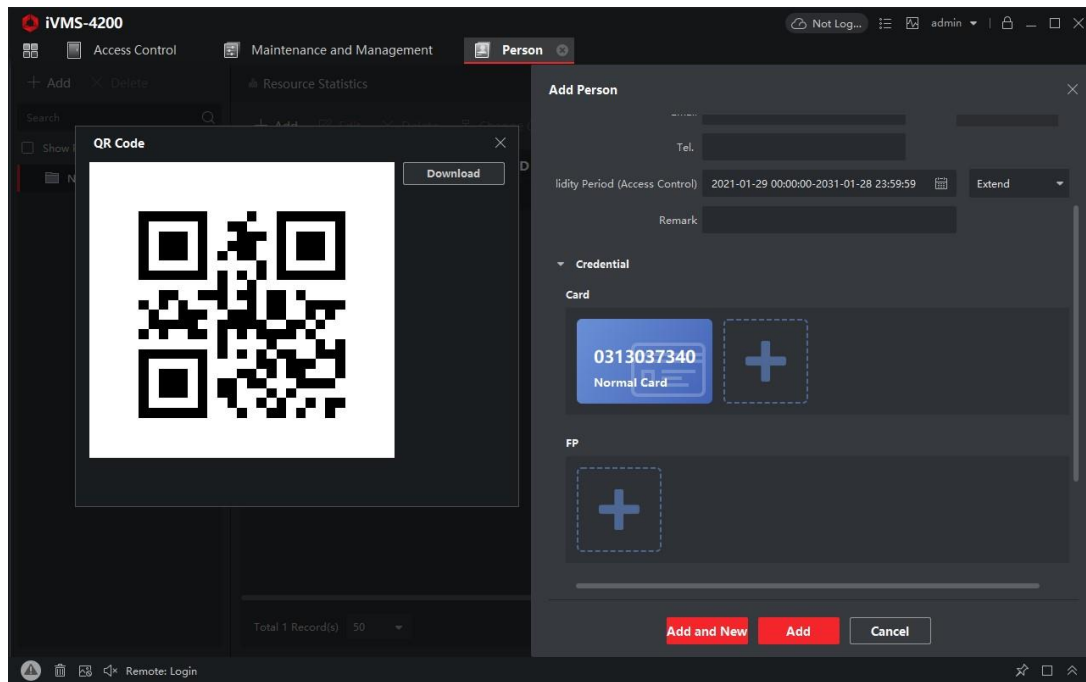


Fig. 1 download the QR code

## 2. Open the door with QR code

- 1) Enter the interface on the device where we can scan QR code (click on the QR code button)

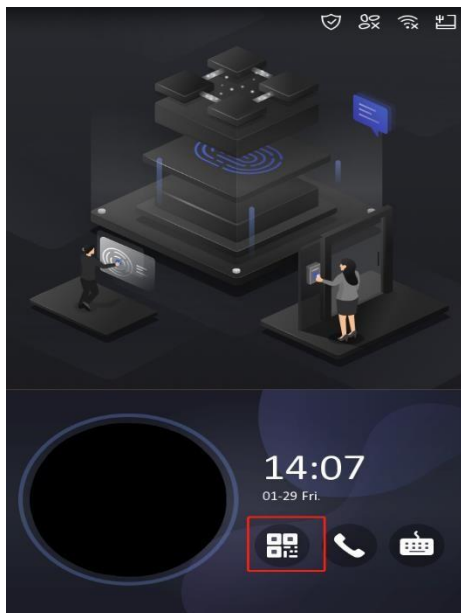
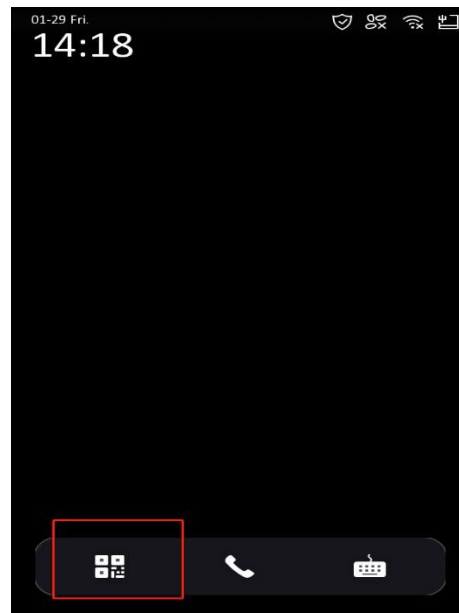


Fig. 1 screen with advertisement

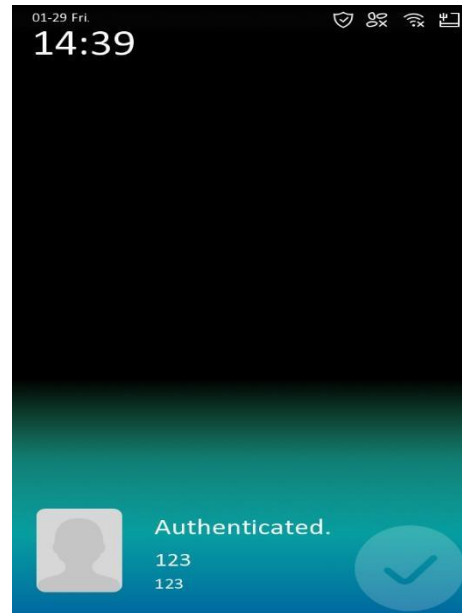
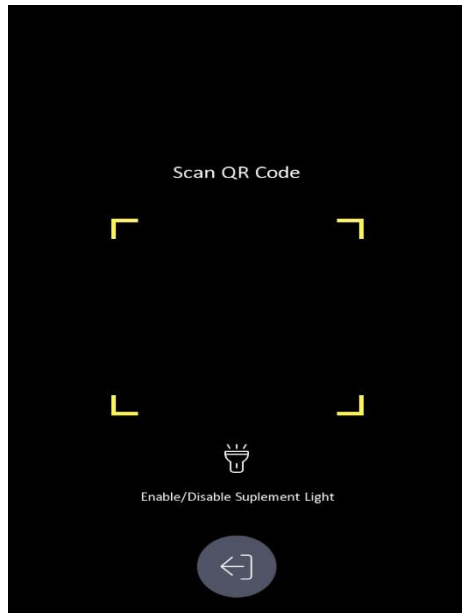


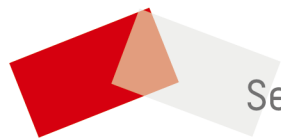
or

Fig. 2 screen without advertisement

<b>Title:</b>	How to open the door with QR code in MinMoe terminal	<b>Version:</b>	v1.0	<b>Date:</b>	28/01/2021
<b>Product:</b>	Access Control			<b>Page:</b>	4 of 4

2) scan the QR code





See Far, Go Further