



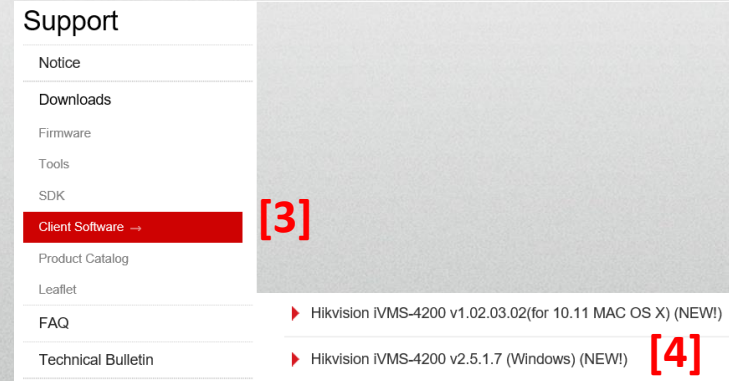
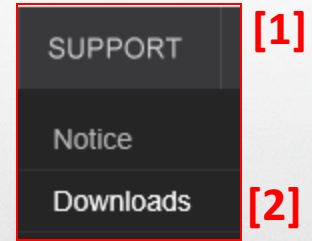
HIKVISION[®]

2017

iVMS-4200 Part 1
Download, Install, Login

How to Download

- Go to Hikvision.com, hover over SUPPORT [1] then click DOWNLOADS [2]
- Choose CLIENT SOFTWARE [3] and click on [4] Windows or MAC (Apple) version of iVMS-4200

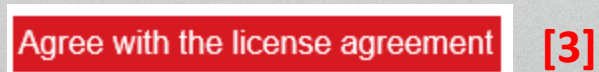


How to Download

- Scroll down to the links for Release Notes [1] and Download link [2]



- Click 'download' [2] and agree to the License [3]



How to Download

- Have your browser SAVE AND RUN the file [1]

*Please note: Different web browsers produce different prompts. Internet Explorer was used in this example

Do you want to run or save iVMS-4200(v2.5.1.7).exe (189 MB) from oversea-download.hikvision.com?

Run

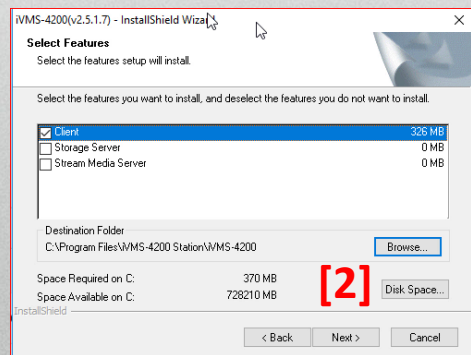
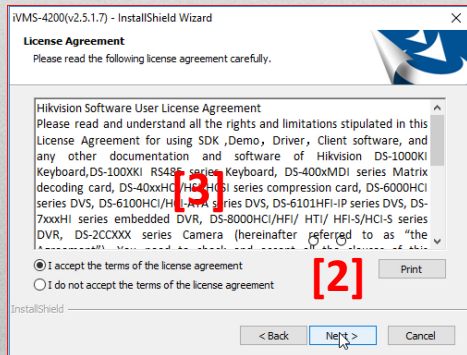
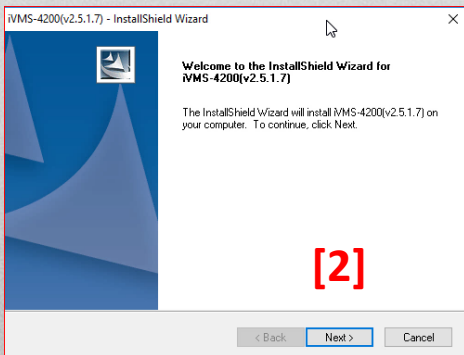
Save

Save

Save as

Save and run

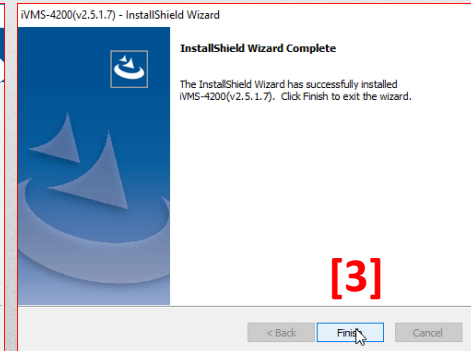
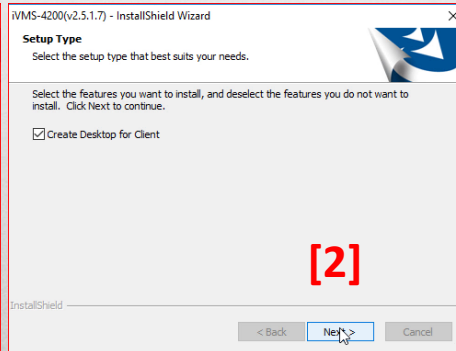
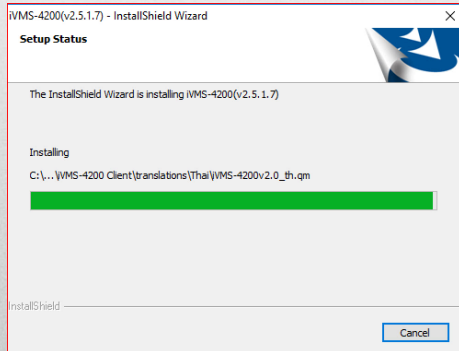
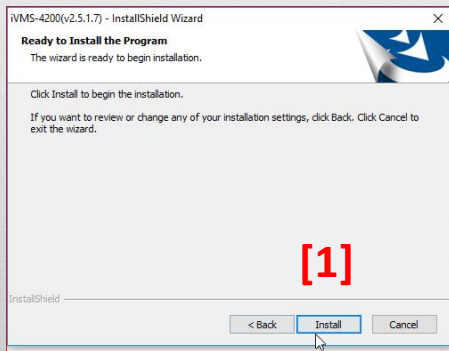
- Click “Next” [2] when prompted. Accept the license agreement



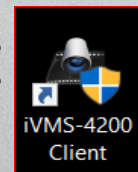
HIKVISION

Continue with Install

- Click “Install”^[1] and “Next”^[2] when prompted
- Then click “Finish”^[3]



- After installation, run the iVMS-4200 Client program from the Desktop^[4]



HIKVISION

iVMS-4200 Login

The first time you run iVMS-4200, it will prompt you to create a Super User ID and Password^[1]. Choose an ID and Password, then Click “Register”^[2]. Please, make sure not to lose the User ID and Password. Use the ID & Password to log in^[3]

The image displays two side-by-side screenshots of the iVMS-4200 software interface. The left screenshot is the 'Register Administrator' dialog box. It contains a message 'Please create a super user before proceeding.' followed by three input fields: 'Super User:', 'Password:', and 'Confirm Password:'. A red [1] is placed to the right of the Password field. Below these fields is a checkbox labeled 'Enable Auto-login'. At the bottom right, there is a red [2] next to the 'Register' button, and a 'Cancel' button is also present. The right screenshot is the 'Login' dialog box. It features a user selection dropdown menu with 'admin' selected, a red [3] next to the password field, a red [4] next to the 'Enable Auto-login' checkbox, and buttons for 'Forgot Password', 'Login', and 'Cancel'.

Please note, that there is no default password – YOU create it the first time iVMS-4200 is ran on your PC. The password abides the same rules as DVR/NVR and IP camera passwords. If you are on a well controlled PC, and you don't want to have to enter the password every time you run iVMS-4200, you can check the “Enable Auto-Login” box^[4].

HIKVISION

iVMS-4200 Accounts

- iVMS-4200 accounts are separate from the accounts on a camera or DVR/NVR. They can have the same names, but creation of accounts in iVMS-4200 does not create any accounts on the devices and vice versa.
- You can set up iVMS-4200 on one computer and then export the configuration file to be imported on other computers. Configuration files include both user accounts and device connection information.