



HIKVISION[®]

2016

How to Add a Hik-Connect P2P device Using the iVMS-4200

HIKVISION

How to Add a Hik-Connect P2P device Using the iVMS-4200

- A Hik-Connect account is required in order to add a Hikvision device to the iVMS4200 using the Cloud P2P service.
- A Hik-Connect P2P device, is a device that is registered to dev.hik-connect.com using the Hik-Connect P2P service.
- The Hik-Connect P2P service must be enabled on the NVR, DVR or IP Camera first prior to adding to the iVMS4200 software.

NOTE: Please see the how to enable the Hik-Connect P2P service guide for more information how to configure this service on a Hikvision device. Please see the how to create a Hik-Connect account using the iVMS4200 guide for more information.

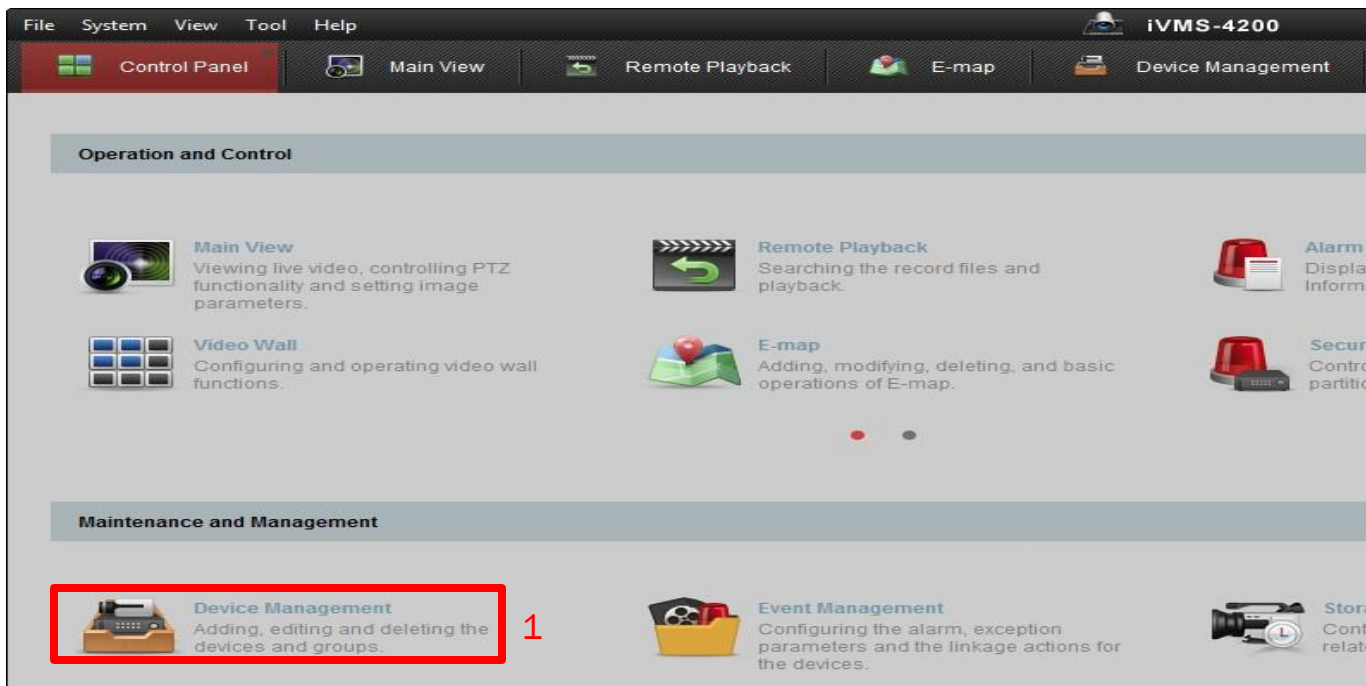
How to Add a Hik-Connect P2P device Using the iVMS-4200

- You will need to have the latest version of iVMS4200 software downloaded and installed on your PC.
- You can download from the <http://tech.hikvisionusa.com> or <http://www.hikvision.com> website.
- You will need a valid email address and access to that email address for verification purposes.



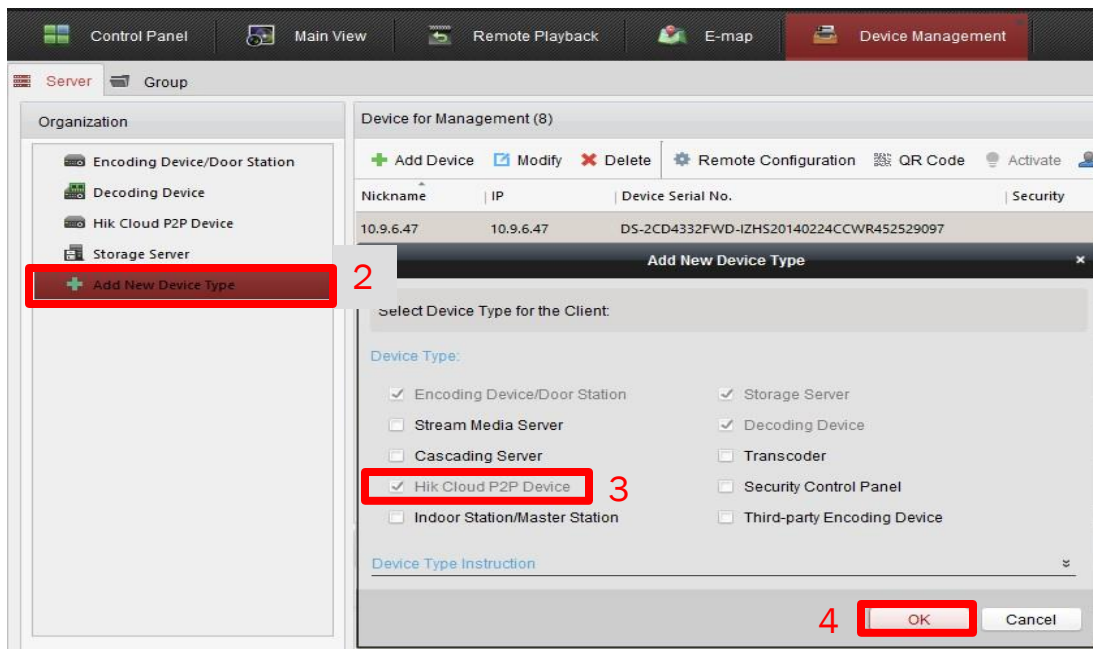
How to Add a Hik-Connect P2P device Using the iVMS-4200

- From the control panel of the iVMS4200 software click on “device management”^[1]



How to Add a Hik-Connect P2P device Using the iVMS-4200

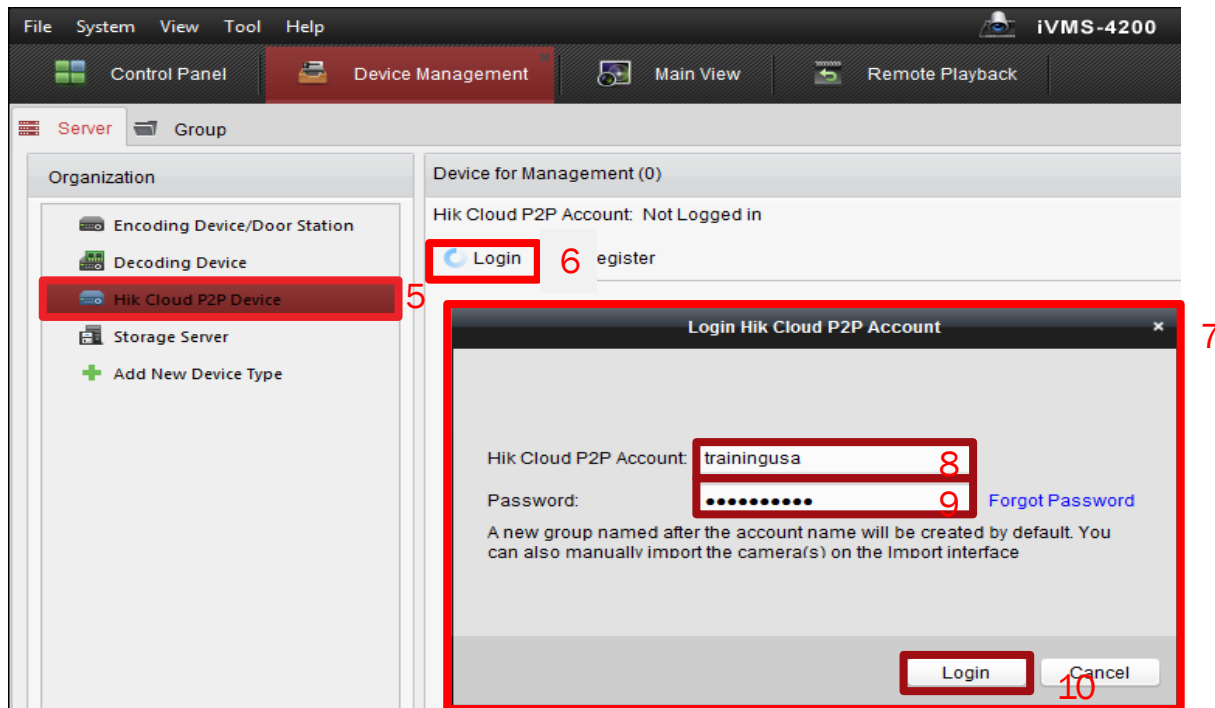
- Click on Add New Device Type [2] from the left menu.
- Place a check in the Hik-Cloud P2P device box. [3]
- Click OK [4]



NOTE: There are two tabs under the device management. The images above are from the server tab. The Organization area is all of your different device types. You may already have Hik Cloud P2P Device as an option.

How to Add a Hik-Connect P2P device Using the iVMS-4200

- Select Hik Cloud P2P device^[5] from the Organization menu on the left hand side.
- Click on the Login button^[6] at the top of the page.
- A Login Hik-Cloud P2P window^[7] appears. Input your Hik Cloud P2P Account^[8] name and Password^[9].
- Click the Login button^[10].



NOTE: If you do not have a Hik-Connect or Hik-Cloud P2P account please see how to create a Hik-Connect account using the iVMS4200 documentation for more information.

How to Add a Hik-Connect P2P device Using the iVMS-4200

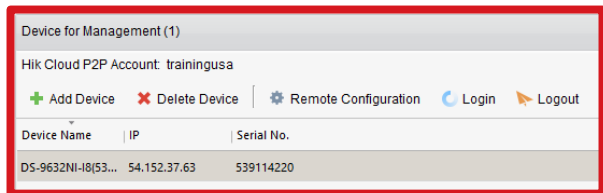
- When you are successfully logged into your Hik-Connect Account you will see your account name here [11]
- Click on add device button [12] at the top of the page.
- Enter serial number and verification code [13] in the corresponding fields.
- Click OK button. [14]

The screenshot displays the iVMS-4200 software interface. The top menu bar includes 'File', 'System', 'View', 'Tool', and 'Help'. The main navigation bar contains 'Control Panel', 'Device Management', 'Main View', and 'Remote Playback'. The 'Device Management' section is active, showing a 'Server' and 'Group' view. The left sidebar lists device types: 'Encoding Device/Door Station', 'Decoding Device', 'Hik Cloud P2P Device' (selected), and 'Storage Server', along with an 'Add New Device Type' button. The main area shows 'Device for Management (0)' with a 'Hik Cloud P2P Account: trainingusa' field labeled '11' and an 'Add Device' button labeled '12'. Below this is a table with columns for 'Device Name', 'IP', and 'Serial No.'. An 'Add Device' dialog box is open, containing 'Serial No.' (539114220) and 'Verification Code' (represented by six dots) fields, both labeled '13', and an 'OK' button labeled '14'.

NOTE: The serial number and verification code can be found on the NVR or DVR's local menu or on the products label.

How to Add a Hik-Connect P2P device Using the iVMS-4200

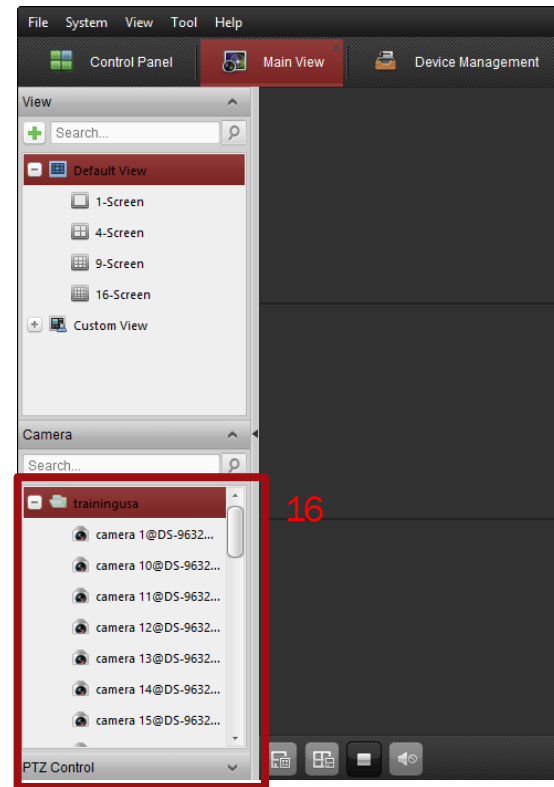
- A device, model number and serial number^[15], will appear on the list when you have successfully added a Hik-Connect P2P device.



15

| Device Name | IP | Serial No. |
|--------------------|--------------|------------|
| DS-9632NI-I8(53... | 54.152.37.63 | 539114220 |

- A group of your cameras will be created using the Hik-Connect Account Name ^[16]. You will find the group on the Main View tab.



NOTE: When importing a Hik-Connect P2P device into the iVMS4200 software, the group will be automatically added by default. The group may not have any channels imported, please refer to iVMS4200 manual for how to add channels to groups.