

TandemVu **Bullet**

Big Picture and Details in One Camera



DeepinView

Also featuring intelligent analytics:

- Multi-Target-Type Recognition
- Attribute Search*
- License Plate Recognition
- Perimeter Protection

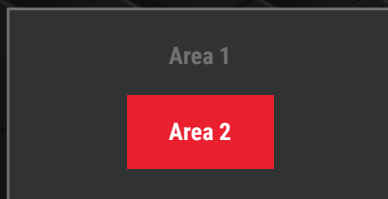
* Attribute Search supported with using Multi-Target detection with DeepinMind NVR

Welcome our new 8 MP TandemVu camera addition (IDS-2CD8A86G0-XZHSY) with bullet housing. This bullet camera enables the monitoring of wide areas and precise details with one camera. It features a 4 MP fixed lens and a 4K varifocal lens in one unit with fusion light for excellent low-light performance.

Equipped with deep learning algorithms and high-performance GPUs, the camera supports dual-channel synchronous computing, maintaining both viewpoints for optimized situational awareness and security.

Why TandemVu Bullet Cameras?

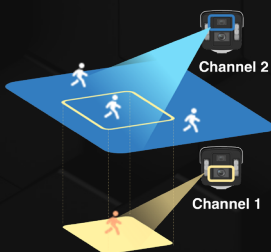
Big Picture + Clear Details



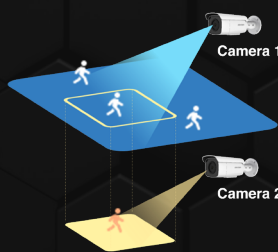
Applications

Area 1: Full coverage protection, day and night
Area 2: Close-up views and AI analytics for this specific area

TandemVu Bullet Camera Solution



Conventional Camera Solution



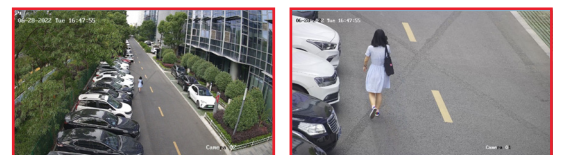
One camera monitors large areas and provides close-up views.

Duplicate cost for installation, IP licenses, and subsequent maintenance

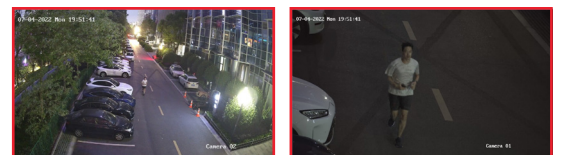
TandemVu Bullet Camera Solution

High-Quality Security Protection Day & Night

• Daytime



• Nighttime



4MP **ColorVu** Technology

4K **DarkFighter**+

*All images are from internal product tests.

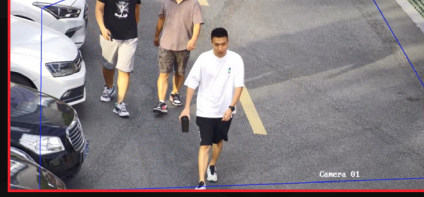
Powerful AI-Driven Performance

- Supports Dual-Channel Synchronous Computing

Fixed-Lens Channel



Varifocal-Lens Channel



- Intelligent Perimeter Protection
- Switchable AI Functions

Applications



Large Campuses



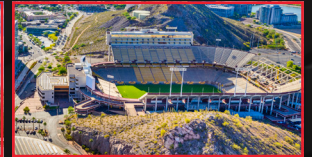
Crosswalks



Factories



Office Parks



Stadiums

Varifocal-Lens Channel

- Supports facial authentication, multi-target-type recognition and road traffic & vehicle detection with **switchable** algorithms

Face Picture Comparison



Alarm Linkage

- **Facial Image Detection**
120 images / frame
- **Facial Image Captured**
120 images / frame
- **Facial Image Upload**
120 images / frame

Road Traffic & Vehicle Detection



Vehicle Features

- License Plate Recognition**
 - Recognition rate ≥98%
 - Blocklist and allowlist: up to 10,000 records
- Direction of Movement**
 - Forward, Reverse

Multi-Target-Type Recognition

Human Detection

- Wearing Glasses
- Wearing a Hat
- Caring an Item
- Caring a Backpack



- Wearing a Mask
- Hairstyle
- Top Type
- Top Color
- Bottom Type
- Bottom Color
- Direction of Movement



Face Capture

- Wearing Glasses
- Wearing a Hat
- Caring an Item

Vehicle Detection



Product Showcase



iDS-2CD8A86G0-XZHSY

- X: Switchable supplemental lights
- H: Body heater
- Y: Anti-corrosive coating

Fixed-Lens Channel



- » F1.0 large aperture
- » 4 MP (2560 × 1440) 4 mm fixed lens
- » Intelligent Perimeter Protection

Fusion Light

- » White and IR lights

Varifocal-Lens Channel



- » 8A86: 4K (3840 × 2160) with a 10-50 mm lens
- » A variety of switchable intelligent algorithms:



SCAN ME

Contact Your Sales Rep:

Phone #:

Email:

General Inquiries/Support: +1 (866) 200-6690 (U.S. and Canada) | +1 (909) 895-0400

hikvision.com



©2023 Hikvision USA Inc. and Hikvision Canada Inc. All rights reserved. Hikvision is a registered trademark of Hikvision Digital Technology Co., Ltd. in the US, Canada and other countries. Product specifications and availability are subject to change without notice.

HIKVISION