



SMART SENSORS FOR EFFECTIVE CARE

PROVIDING A HELPING HAND FOR THE CLIENT AND CARING PROFESSIONAL



Solution strengths



Healthcare is under great pressure, with an ageing population and finite resources. There are more clients but often fewer healthcare providers, so solutions that can ease that pressure are welcome. In addition, the entire sector wants to make healthcare more measurable, affordable and effective. This is what health insurance companies are also calling for.

Hikvision and its partners offer innovative solutions to

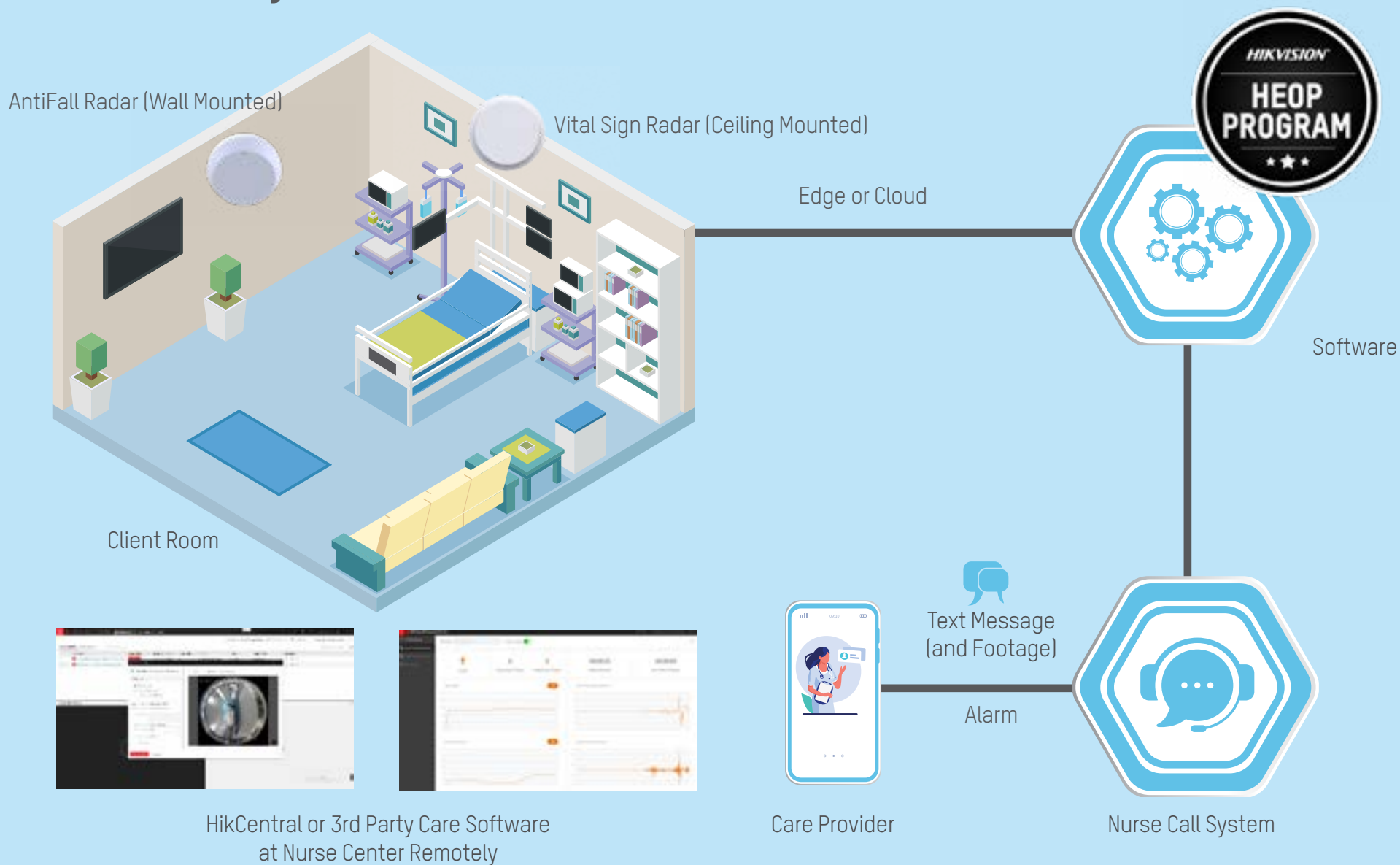
- Achieve measurably more efficient work
- Increase safety for clients and staff
- Deliver better care

One of the tasks for caregivers is to check clients to see if any medical or other care is required. Usually this is done by physical check-ups - which can take up a lot of time. It can also be very disruptive to the peace and quiet of the client. One of the solutions is a sensor that monitors the client's behavior and generates an alarm if a dangerous situation arises for that client. The nursing staff can react adequately and quickly to the appropriate alarms.

Smart sensors can be installed in various parts of the institution and used to monitor a number of things, such as whether patients are out of bed, whether they have fallen, if they are in the room, or even what their vital signs are. Hikvision's solution can also include call buttons and bi-directional audio, so caregivers can hear if there is a problem and even speak to the patient. Alarms can be sent to a central point - for example a nurse call system - or to caregivers via a nurse call system to a mobile device.

Elderly, disabled and mental health care can be particularly intensive for carers. Hikvision wants to contribute to the care market in order to make the work of care personnel less stressful. They need to be able to focus on providing care, not on chasing false alarms and writing endless reports. These innovations ensure that clients receive the care they need and deserve, and that carers are able to avoid unnecessary tasks throughout the workday.

Solution System Architecture





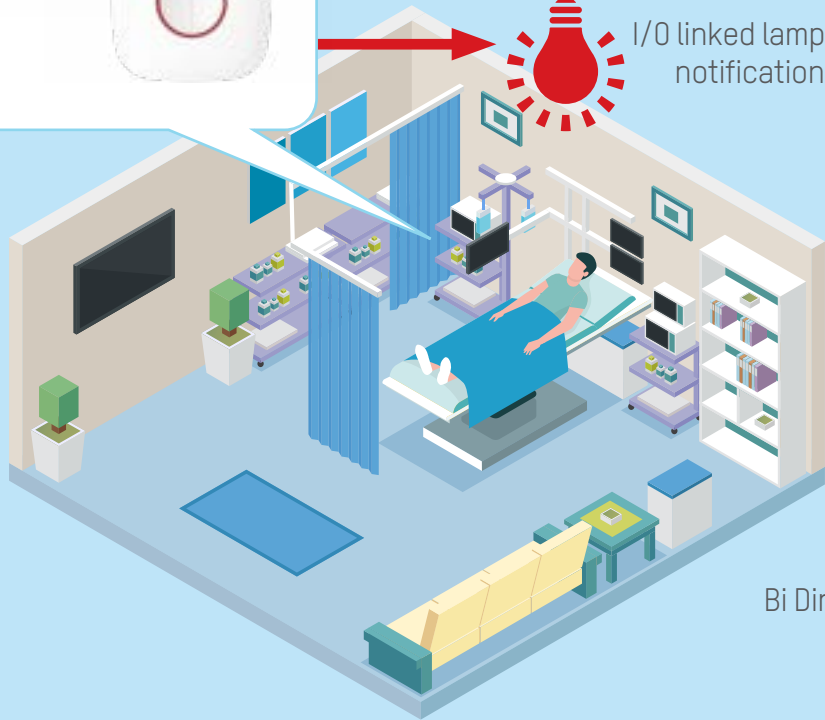
Solution System Architecture



Wireless Emergency Button can be placed in room or **worn on arms** allowing client to call for help and assistance in any emergency situations or whenever they need services.



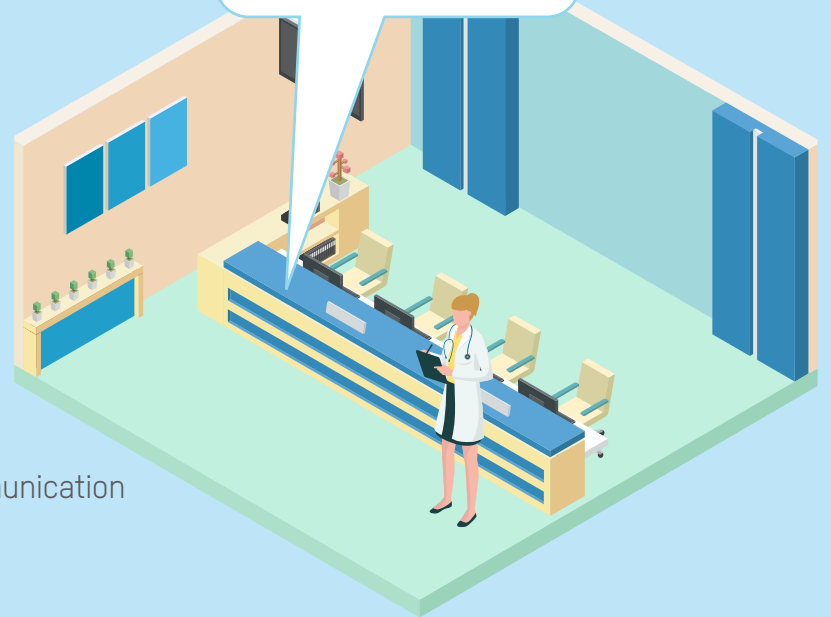
I/O linked lamp for notification



Client's room

- Push button for notification
- Emergency button wearable with wristband

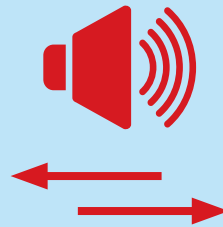
Nurse Call Station



Nurse center

- 24/7 guard
- Notification is escalated when the call is not answered

Emergency Call



Bi Directional (SIP) audio communication



Features



Falling down detection

There could be a number of reasons why a patient could be unsteady on their feet – including age, medication, and disorientation. Using sensor technology and AI, the solution can detect if a person falls, by the way they move. This can be immediate flagged to care personnel, so they can take immediate action.



Bi Directional (SIP) audio communication

Through two-way audio communication, the nursing staff can immediately contact and reassure the patient if necessary.



In bed / out of bed detection

Especially during the night, rest is very important for the client. If the client gets in and out of bed several times, this is an indication that the rest is not optimal. Some clients may also need a helping hand to get out of or into bed. The sensor can give a signal that the right help is being given to the right client at the right time.



Features



In bathroom / out of bathroom detection

The nursing staff can be alerted if a client has gone to the toilet but has not returned. This can be an indication that something is wrong - that he is in pain, or cannot move, for example. This means they can quickly provide assistance if needed. This is based on a configurable time limit.



Vital sign detection

A Vital-Sign Radar Sensor can help provide significant medical information for better analysis of sleep quality and overall health of the body.

It can also measure time spent in and out of bed, respiratory and heart rates, and body movement information.



Sound-based detection

An audio sensor can detect if a patient is screaming. This means that the nursing staff can react immediately to check what is going on.

About Hikvision

Since 2001, Hikvision has grown from being a single-product supplier to the world's leading provider of security products and solutions. From the early digital age to today's intelligence era, we have seized every opportunity to advance the industry with our innovative technologies. And venturing into new areas of inspiring technology – such as Artificial Intelligence, cloud computing, and the fusion of deep learning and multi-dimensional perception technologies, to name a few – Hikvision leads the security industry as an IoT provider with video as the core competency. Now we have brought these innovation to the healthcare market, combining them with partner technologies to provide state-of-the-art solutions.

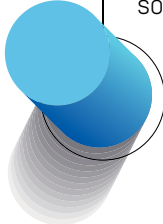
Hikvision Partner Ecosystem

Hikvision believes that close collaboration with its ecosystem of partners can further accelerate innovation, while also securing maximum value creation for its customers and their communities. A cornerstone of the ecosystem is the Technology Partner Program (TPP). Together, Hikvision and its technology partners combine expertise, skills, technological understanding, and industry focus to deliver optimum solutions, expand business scope, and increase profitability. The integration of Hikvision's innovative video technology with the technologies born out of these programs offers end-user customers with secure, customized solutions.

Why Hikvision?



We aim to be experts in all industries we focus on, enabling us to design tailor-made **solution** that solve specific industry challenges



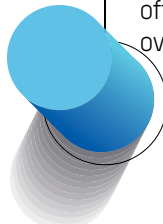
Our robust network of **eco-system partners** allows us to offer innovative and fully integrated solutions



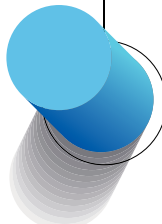
We create **trust** in our solution by participating in industry organizations and providing extensive training programs for partners



5 year warranty, secure-by-design products and 3rd party **quality** certifications show our commitment to quality



We have an extensive **support** network, that ranges from a fully equipped local Benelux team to branch offices and R&D teams all over the world



Our broad multi-purpose product range provides **versatility** for tailor-made solutions



We aspire to use innovative technologies to contribute to the **sustainable** development of society and the environment. As a responsible corporate citizen we are dedicated to public welfare

SMART SENSORS FOR EFFECTIVE CARE

PROVIDING A HELPING HAND FOR THE CLIENT AND CARING PROFESSIONAL

Hikvision Europe

Dirk Storklaan 3
2132 PX Hoofddorp
The Netherlands
T +31 23 5542770
info.eu@hikvision.com

Hikvision France

6 rue Paul Cézanne,
93360 Neuilly-Plaisance
France
T +33 (0)1 85330450
info.fr@hikvision.com

Hikvision Poland

Business Garden, Budynek B3
ul. Żwirki i Wigury 16B,
02-092 Warszawa
T +48 4600150
info.pl@hikvision.com

Hikvision Czech

BETA Building, Vyskocilova
1481/4, Prague 4
Czech Republic
T +42 29 6182640
info.cz@hikvision.com

Hikvision Germany

Werner-Heisenberg Str. 2b
63263 Neu-Isenburg,
Germany
T +49 69 401507290
sales.dach@hikvision.com

Hikvision Romania

Splaiul Independentei street
291-293, Riverside Tower,
12th floor, 6th district,
Bucharest, Romania
T +31235542770/988
marketing.ro@hikvision.com

Hikvision Belgium

Neringenweg 44,
3001 Leuven, Belgium
T +31 23 5542770
info.bnl@hikvision.com

Hikvision Hungary

Budapest, Reichl Kálmán u.
8,
1031, Hungary
T +36 1 323 7650
info.hu@hikvision.com

