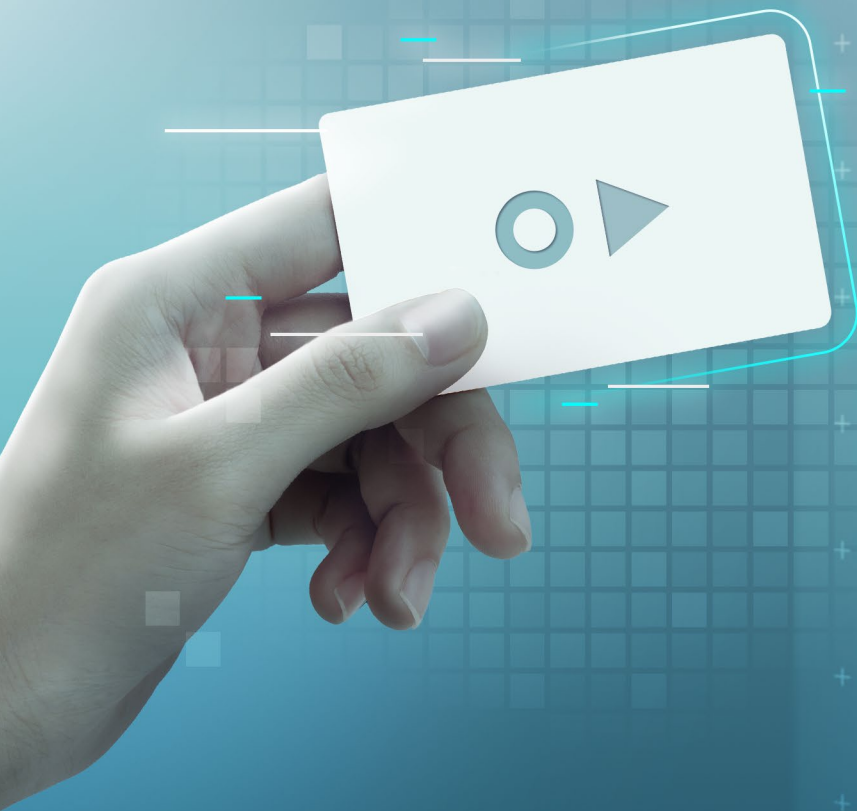


**HIKVISION**<sup>®</sup>

# TAKE DOOR SECURITY TO THE NEXT LEVEL



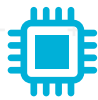
## **DESFire Solution**

For more secure, touch-free access control



## TAKE DOOR SECURITY TO THE NEXT LEVEL

Security needs to keep up with the threats it combats. This is especially important to organizations that have a greater need to secure premises, equipment and people. Hikvision has upgraded its access control solution to be compatible with DESFire cards – one of the most secure entry keycards on the market. With a highly secure microcontroller, randomised key process and support of more encryption algorithms, these cards provide the next level of security. A built-in microprocessor also means it can store information itself, making it scalable for future security developments.



### Highly Secure Microcontroller

Using an NXP chip provides highly secure microcontroller-based integrated circuits. This means the chip is small, light, and provides 4k data storage.



### Randomised Key

Uses a temporary key in the form of a random number every time it's used. This ensures that the key is not the same for every swipe, making it more secure and harder to fake.



### Extra Encryption Algorithms

Supports DES/3DES/AES encryption algorithm, making it much safer.

## SOLUTION TOPOLOGY

