



HUGE PANORAMAS.
INCREDIBLE VIEW.
**HIKVISION PANOVU SERIES
NETWORK CAMERA**

PanoVu



WHAT IS A PANOVU CAMERA?

When designing surveillance applications, more and greater requirements have become necessary for monitoring large areas such as public plazas, arenas, airports, busy traffic intersections. In very large settings, security personnel need to see more with just one camera – not just a panoramic image, but zoomed-in, detailed views as well.

With that in mind, Hikvision designed the PanoVu Series all-in-one cameras to capture both excellent panorama and close-up details. Panoramic images are captured with multiple sensors, rendering 180° or 360° panoramic imaging with real-time ultra-HD resolution. The integrated design and high-speed pan-tilt-zoom action grants the user swift positioning over expansive areas with the power to bring sharp details into focus. At the same time, the PanoVu Series Cameras utilize Hikvision's ultra-low light DarkFighter technology, making colored images possible in poorly lit environments.

Now, new additions to the PanoVu product family feature high definition panoramic view camera – up to 32 MP – as well as supplemental IR & panoramic lighting for clear images in extremely dark environment, and an amazing wide tilt angle. And, because panoramic cameras demand more bandwidth and storage than conventional cameras, Hikvision designed these PanoVu cameras to utilize H.265+ technology, making the most efficient use of video transmission and storage.

PanoVu Mini Series cameras are new members to the Hikvision PanoVu product family. They feature compact sizes, affordable prices, and ease of installation and use, while keeping all the market-proven features of PanoVu cameras such as high edge definition, low image distortion, and powerful PTZ functions. They are used in a wide range of scenarios, indoor and outdoor.

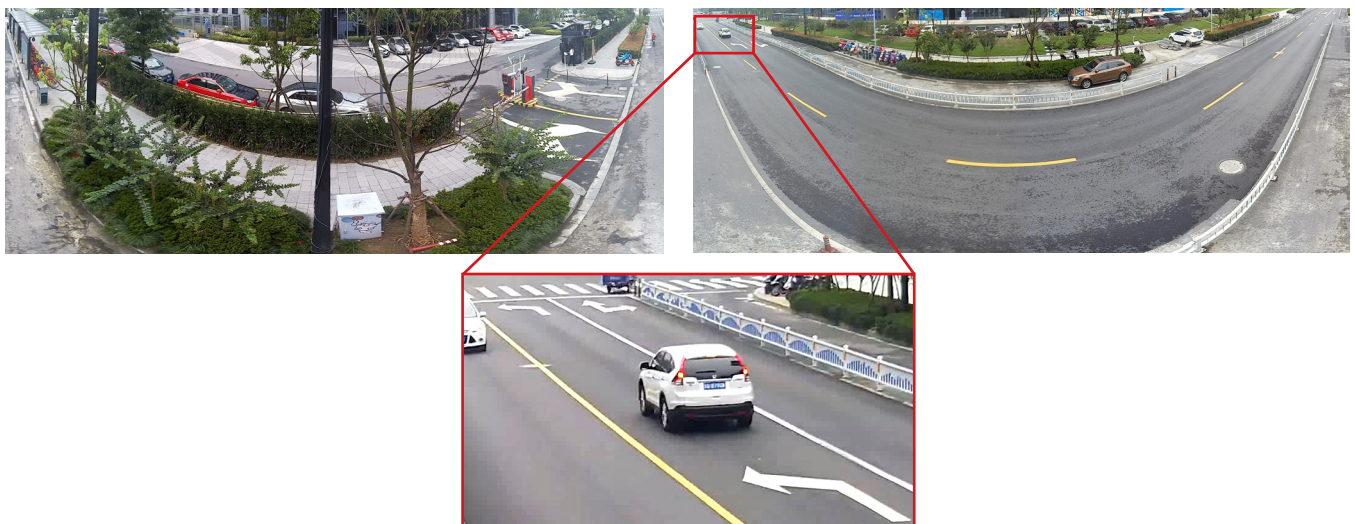
A SIMPLE SYSTEM FOR AN EASY INSTALLATION

With an "all-in-one" design, a single product serves as a system that enables front-end splicing and delivers panorama and every detail through full shot (180° or 360°) and close-up shot without using any additional server. You can enjoy a simple and time-saving installation and maintenance. The product allows for the same quick installation as a dome camera - all you need are a cable and a power supply. Characterized by flexibility and ease of operation, it provides a full range of options in the user interface to offer a panorama in the ultra-high-resolution scene while capturing the details dynamically in real time. You can zoom into an image's center to see the close-up details just by clicking on the image.



PANORAMIC VIEWS AND FINER PICTURES

Combining several built-in horizontal cameras with PTZ power, one PanoVu camera captures 360° or 180° panoramic images as well as close-up images with up to 50x optical zoom. These cameras provide high-resolution images with more detail. Note, too, that the panoramic images are stitched together within the camera itself, so users will not need another server or add-on to enjoy full use of the cameras.



360° Overview + 50x PTZ

DarkFighter ULTRA-LOW-LIGHT TECHNOLOGY AND SUPPLEMENTAL LIGHTING

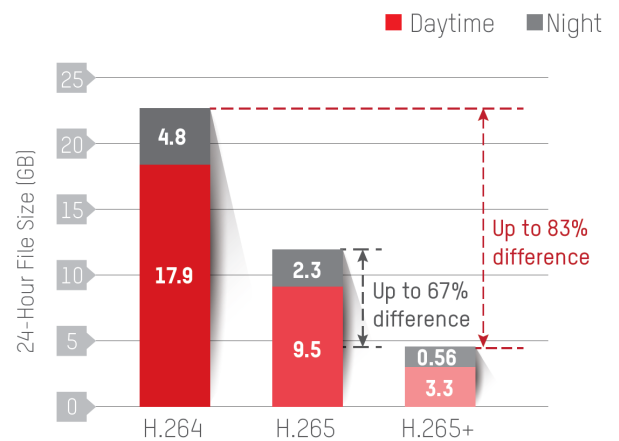
All fixed and zoom lenses of PanoVu cameras utilize Hikvision DarkFighter ultra-low-light technology. Therefore, whether you are viewing 180° or 360° panoramic images or PTZ close-up images, each one can render colored images in very low-light environments down to 0.002 lux.

Supplemental lighting significantly improves image quality in extremely dark environment. But with a panoramic camera, it's difficult for supplemental light to reach the same angle as the lens. Hikvision's advanced PanoVu cameras, however, feature wide-angle supplemental light, perfectly matching the angle of the lens and bringing vivid images to life.



SMART CODEC – H.265+ OPTIMIZED COMPRESSION

PanoVu Series Cameras also feature Hikvision's H.265+ technology, reducing bandwidth and storage requirements by an average of 70% or more while maintaining consistent resolution, framerates, and detail. It's an efficient way to manage super high resolution video footages.

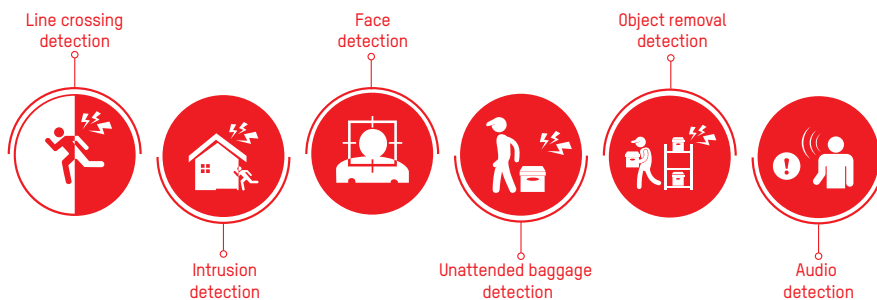


24-hour recording file size (GB) comparing H.264, H.265, and H.265+

*Data was tested in a common scene; for reference only.

SMART FUNCTIONS

With advanced video analysis and multi-target tracking algorithms, PanoVu Cameras also feature a wide range of smart functions in panoramic mode, including intrusion detection, line crossing detection, and region entrance and exiting detection. The PanoVu can also send alarm signals linked to the PTZ for tracking, greatly improving security efficiency.



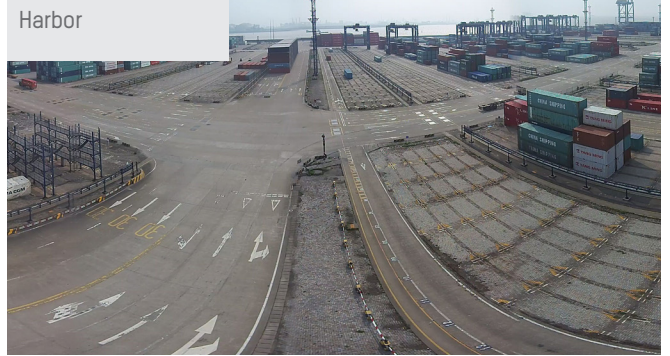
APPLICATION SCENARIOS

With intelligent and powerful features, the PanoVu Series Cameras can be used extensively, including in applications like airports, transit stations, gymnasiums, scenic ports, and public squares - in fact anything needing a wide range of monitoring.

Squares



Harbor



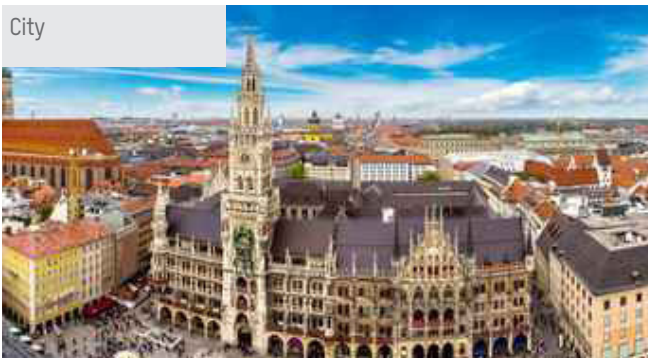
Intersections



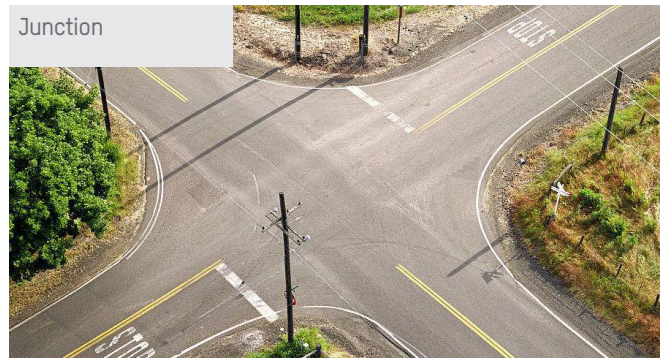
Airports



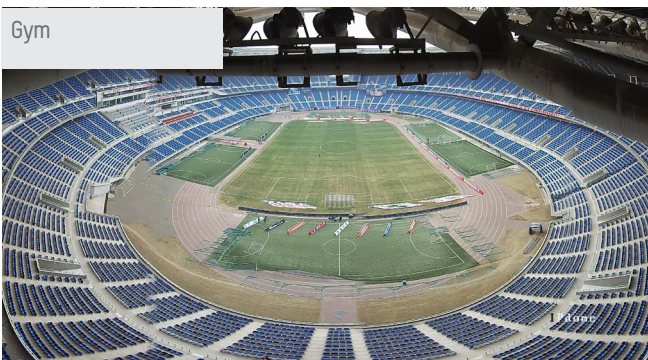
City



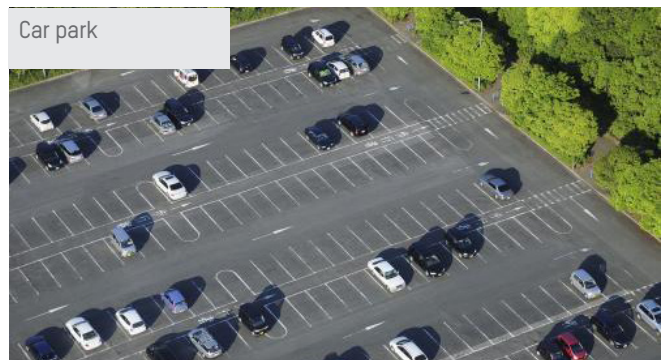
Junction



Gym



Car park



PRODUCT FEATURES

DS-2CD6D24FWD

8/20 MP PanoVu Vari-Focal Network Camera



- Four 1/2.7" progressive scan CMOS
- Up to 4-ch 2 MP resolution @ 30 fps
- Horizontal field of view: 31° to 108°
- Vertical field of view: 22.5° to 74.4°
- H.265, H.264
- Optical fiber transmission
- 10-30 m IR range
- Four flexible 2.8-12 mm VF lens
- 6 behavior analyses, 4 exception detection, and face detection

DS-2CD6D54FWD

8/20 MP PanoVu Vari-Focal Network Camera



- Four 1/2.7" progressive scan CMOS
- Up to 4-ch 5 MP resolution @ 30 fps
- Horizontal field of view: 31° to 108°
- Vertical field of view: 22.5° to 74.4°
- H.265, H.264
- Optical fiber transmission
- 10-30 m IR range
- Four flexible 2.8-12 mm VF lens
- 6 behavior analyses, 4 exception detection, and face detection

DS-2CD6D54G1-ZS/RC

Quad-Directional Varifocal PanoVu Camera



- 1/2.7" progressive scan CMOS
- Resolution 2560 × 1920
- Horizontal FOV 100° to 49°, vertical FOV 72° to 36.4°, diagonal FOV 134.4° to 61.4°
- H.265, H.264
- Pan: -60° to 60°, tilt: 10° to 90°, rotate: 0° to 350°
- Varifocal lens, 2.8 to 8 mm
- 6 behavior analyses, 4 exception detection, and face detection
- Image Enhancement: BLC, HLC, 3D DNR, Defog, EIS

DS-2CD6D54G1-IZS

Quad-Directional Varifocal PanoVu Camera



- 1/2.7" progressive scan CMOS
- Resolution 2560 × 1920
- Horizontal FOV 100° to 49°, vertical FOV 72° to 36.4°, diagonal FOV 134.4° to 61.4°
- H.265, H.264
- Pan: -60° to 60°, tilt: 10° to 90°, rotate: 0° to 350°
- Varifocal lens, 2.8 to 8 mm
- 6 behavior analyses, 4 exception detection, and face detection
- up to 30m IR range
- Image Enhancement: BLC, HLC, 3D DNR, Defog, EIS

PRODUCT FEATURES

DS-2CD6D52G0-IHS

Dual-Directional PanoVu Camera



- 1/2.7" Progressive Scan CMOS
- Dual lens
- Flexible Lens: P: -90 to 90°; T: 0 to 60° (2.8mm), 0 to 70° (4/6mm); R: 0 to 355°
- H.265, H.265+, H.264, H.264+
- 2560 × 1920 @ 30fps
- 120dB WDR
- Built-in micro SD/SDHC/SDXC card slot, up to 256 GB
- IP67, IK10
- Up to 10m IR range
- Image Enhancement: BLC, HLC, 3D DNR, Defog, EIS

DS-2CD6D82G0-HIS

Dual-Directional PanoVu Camera



- 1/2.5" Progressive Scan CMOS
- Dual lens
- Flexible Lens: P: -90 to 90°; T: 0 to 60° (2.8mm), 0 to 70° (4/6mm); R: 0 to 355°
- H.265, H.264
- 3840 × 2160 @ 30fps
- 120dB WDR
- Built-in micro SD/SDHC/SDXC card slot, up to 256 GB
- IP67, IK10
- Up to 10m IR range
- Image Enhancement: BLC, HLC, 3D DNR, Defog, EIS

DS-2DP1618ZIXS-DE/440/T2

180° Stitched 16 MP PanoVu Camera with PTZ



Panoramic Camera

- Four 1/1.8" 4 MP progressive scan CMOS
- Up to 5520 × 2400 resolution @30fps
- Horizontal field of view: 180°
- Vertical field of view: 85°
- Min. illumination
- Color: 0.0005 Lux @(F1.6, AGC ON)
- B/W: 0.0001 Lux @(F1.6, AGC ON)
- Supports people density detection in panoramic channel

Tracking PTZ Camera

- 1/1.8" 4 MP progressive scan CMOS
- Up to 2560 × 1440 resolution @30fps
- Pan and tilt range: 360° (Pan), -15° to 90° (Tilt)
- Min. illumination
- Color: 0.0005 Lux @(F1.2, AGC ON)
- B/W: 0.0001 Lux @(F1.2, AGC ON)
- 0 Lux with IR
- 40 × Optical Zoom, 16 × Digital Zoom
- WDR: 120 dB
- IR distance: 250 m

DS-2CD6924G0

8 MP PanoVu Series Panoramic Dome Camera



Panoramic Camera

- Four 1/1.8" 4 MP progressive scan CMOS
- Up to 5520 × 2400 resolution @30fps
- Horizontal field of view: 180°
- Vertical field of view: 85°
- Min. illumination
- Color: 0.0005 Lux @(F1.6, AGC ON)
- B/W: 0.0001 Lux @(F1.6, AGC ON)
- Supports people density detection in panoramic channel

Tracking PTZ Camera

- 1/1.8" 4 MP progressive scan CMOS
- Up to 2560 × 1440 resolution @30fps
- Pan and tilt range: 360° (Pan), -15° to 90° (Tilt)
- Min. illumination
- Color: 0.0005 Lux @(F1.2, AGC ON)
- B/W: 0.0001 Lux @(F1.2, AGC ON)
- 0 Lux with IR
- 40 × Optical Zoom, 16 × Digital Zoom
- WDR: 120 dB
- IR distance: 250 m

HUGE PANORAMAS.
INCREDIBLE VIEW.
HIKVISION PANOVU SERIES NETWORK CAMERA

Hikvision Europe

Dirk Storklaan 3
2132 PX Hoofddorp
The Netherlands
T +31 23 5542770
info.eu@hikvision.com

Hikvision Germany

Flughafenstr. 21
63263 Neu-Isenburg
Zeppelinheim, Germany
T +49 69 401507290
sales.dach@hikvision.com

Hikvision France

6 rue Paul Cézanne,
93360 Neuilly-Plaisance
France
T +33 (0)1 85330450
info.fr@hikvision.com

Hikvision Romania

Splaiul Independentei street
291-293, Riverside Tower,
12th floor, 6th district,
Bucharest, Romania
T +31235542770/988
marketing.ro@hikvision.com

Hikvision Poland

Business Garden, Budynek B3
ul. Żwirki i Wigury 16B,
02-092 Warszawa
T +48 4600150
info.pl@hikvision.com

Hikvision Belgium

Neringenweg 44,
3001 Leuven, Belgium
T +31 23 5542770
info.bnl@hikvision.com

Hikvision Czech

BETA Building, Vyskocilova
1481/4, Prague 4
Czech Republic
T +42 29 6182640
info.cz@hikvision.com

Hikvision Hungary

Budapest, Reichl Kálmán u. 8,
1031, Hungary
T +36 1 323 7650
info.hu@hikvision.com