



iThermalAI x **HIKVISION**[®]

JOINT VALUE BROCHURE

CREATING EARLY FIRE & SMOKE
DETECTION SOLUTIONS TOGETHER

Providing reliable AI-Based fire & smoke
detection at an early stage

About iThermAI FSD

We use cutting-edge artificial intelligence and image/video processing techniques to detect smoke and fire from streams of surveillance cameras. Early fire and smoke detection (FSD) helps our customers prevent massive disasters. The state-of-the-art techniques and models in deep learning and computer vision make iThermAI FSD unique. FSD does not need internet connection, nor external cloud services. FSD is portable thanks to our efficient low-cost edge hardware, and can be integrated seamlessly in any standard network of cameras.



Technical Details

Solution Type	VMS, Fire & Life Safety Systems
Integration Protocols	ISAPI/ONVIF/HEOP/HikCentralProfessional OpenAPI
Product Languages	English
Regions	Europe

Integrated Hikvision Products

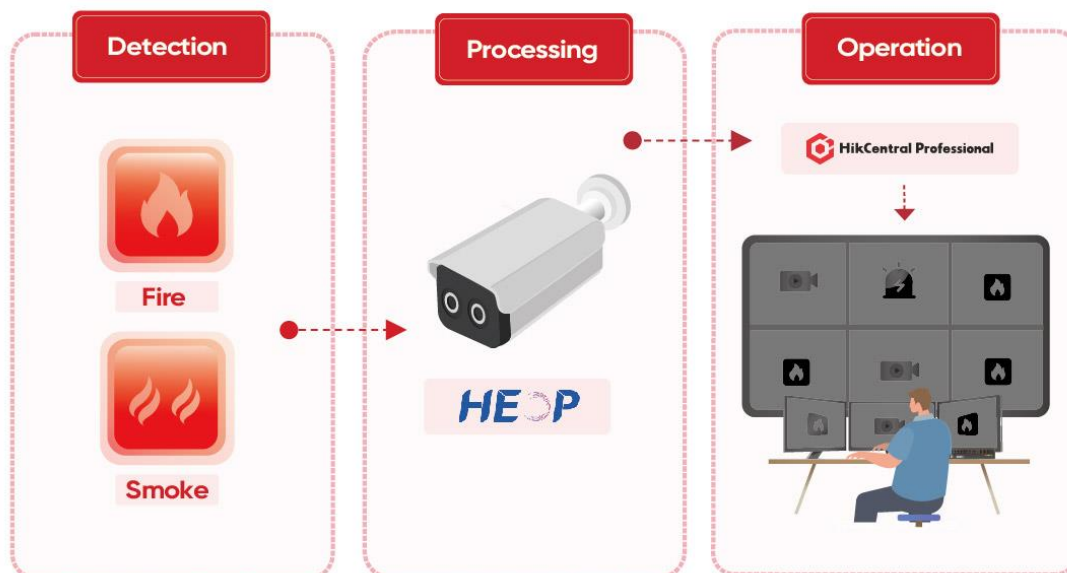
- ✓ IP Cameras, PTZ Cameras, Thermal Cameras
- ✓ Alarm
- ✓ HikCentralPro

Supported Product Models and Versions

iThermAI: Smart Fire & Smoke Detection
Hikvision: DS-2CD3B86G2T-IZHSY(8-32mm)(H) ;
V5.7.20 build 220905

Solution Architecture

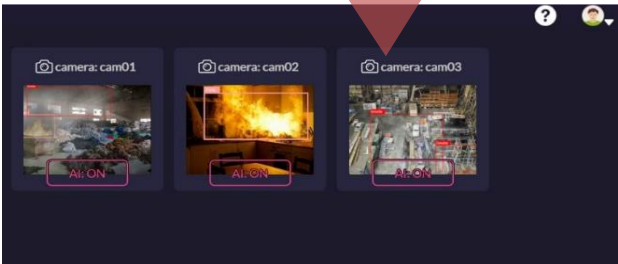
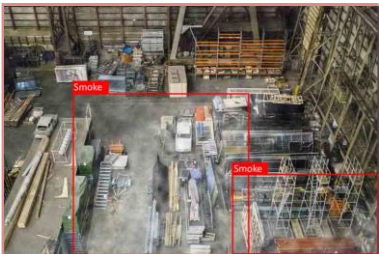
iThermAI is an edge-based device installed on the same internal network as the IP-based cameras and the HikCentralVMS server. iThermAI receives the video streams of multiple cameras, and monitors them 24/7 with the built-in AI core to detect the potential threat of smoke and fire. After detection, it sends the relevant alarms to the HikCentralVMS. The iThermAIapp can be easily installed into HEOP cameras. For other IP-based cameras, you can install an iThermAI embedded board into your local network.



Key Benefits

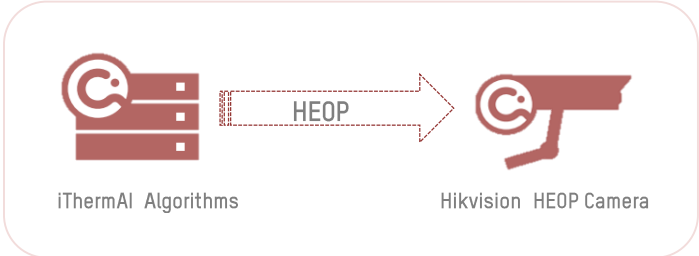
Enhanced fire prevention with AI-based flame and smoke detection

AI algorithms are lightweight, fast, and trained with numerous types of smoke and fire, so our early fire and smoke detectors (FSD) help customers efficiently prevent accident and loss. They also enhance the safety of both personnel and assets.



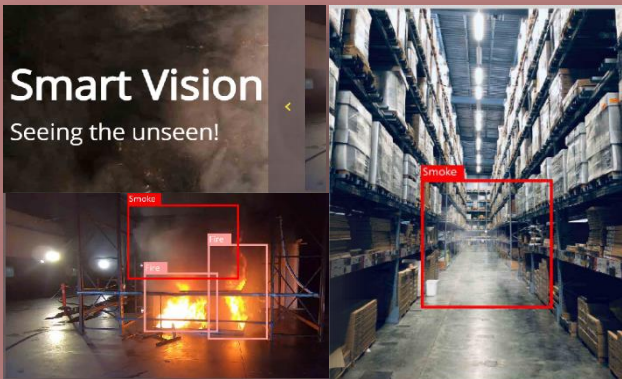
Flexible integration and easy installation

iThermAI algorithms can be easily installed as an app inside your HEOP camera, and nothing else is required for the whole system.



Server based option: Adding AI connectivity to standard video cameras

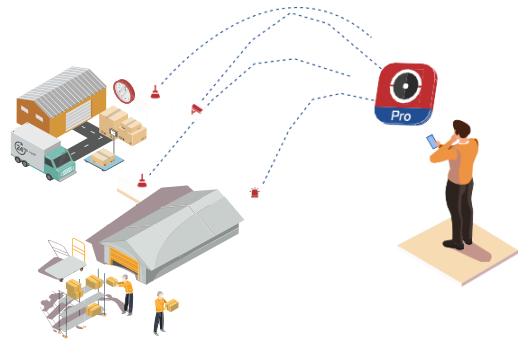
The iThermAI compact embedded boards can be added as a node to your network of cameras. Each board is enough to monitor at least 5 camera streams.



iThermAI
X
Hikvision

Native integration with HikCentralPro VMS

iThermAI FSD sends event alarms to HikCentral Pro VMS, and can also be adapted for other alarm management platforms.



Key Features



Efficient integration inside HEOP-enabled camera



Customizable and applicable to various verticals



Compatible with HikCentral Pro and other VMS platforms



Seamless integration with any network of IP cameras



Fast and efficient on-the-edge AI processing

Targeted Industries



Retail



Utilities/Energy



Commercial



Manufacturing/Industry



Healthcare



Logistics

About Us

Hikvision Digital Technology

Hikvision is committed to serving various industries through its cutting-edge technologies of machine perception, artificial intelligence, and big data, leading the future of AIoT. At Hikvision, we believe that it's the close collaboration with our ecosystem of partners that accelerates innovation and development, while also securing maximum value creation for clients.

We work closely with thousands of the best manufacturers of technical hardware and software systems in the security, automated manufacturing, and IoT industries. Our Technology Partner Program demonstrates how clients can use Hikvision technologies with full confidence that we provide vendors the right tools for comprehensive integration and compatibility with all our products, empowering our joint-value solutions to address pain points in various industries.

iThermAI

iThermAI is an AI company. The company's main product is the smart fire and smoke detection (FSD), based on surveillance camera video streams.

iThermAI integrates its deep learning AI with Hikvision CCTV and thermal cameras to provide early stage fire and smoke detection. This is particularly useful for remote sites where early detection is critical, such as warehouses, waste collection & recycling sites, and even EV charging in parking areas.



HIKVISION®

TECHNOLOGY PARTNER

Hikvision Headquarters

No.555 Qianmo Road, Binjiang District,
Hangzhou 310051, China
T +86-571-8807-5998
Business: overseasbusiness@hikvision.com
Technical Support: support@hikvision.com

iThermal B.V.

Klein Dalenstraat 45
3020 Herent, Belgium
Email: Jahanshahi@ithermai.com
T +32 489 00 2283
www.ithermai.com

Hikvision Australia
T +61-2-8599-4233
salesau@hikvision.com

Hikvision Azerbaijan
T +994 50 369 8157
Azerbaijan.CATC@hikvision.com

Hikvision Brazil
T +55-11-3318-0050
Latam.support@hikvision.com

Hikvision Canada
T +1-866-200-6690
sales.canada@hikvision.com

Hikvision Colombia
sales.colombia@hikvision.com

Hikvision Czech
T +420 29 6182640
info.cz@hikvision.com

Hikvision Egypt
T +20223066117
sales.eg@hikvision.com

Hikvision Europe
T +3123 5542770
sales.eu@hikvision.com

Hikvision France
T +33(0)185 330 450
info.fr@hikvision.com

Hikvision Germany
sales.dach@hikvision.com

Hikvision Hong Kong , China
sales.hk@hikvision.com

Hikvision Hungary KFT
info.hu@hikvision.com

Hikvision India
T +91-22-6855 9944
sales@pramahikvision.com

Hikvision Indonesia
T +62212933 9366
Sales.Indonesia@hikvision.com

Hikvision Israel
T +972 79 5555590
sales.israel@hikvision.com

Hikvision Italy
T +39 0438 6902
info.it@hikvision.com

Hikvision Kazakhstan
T +7 (727) 291-75-88
support@hikvision.kz

Hikvision Kenya
wangchengbin@hikvision.com

Hikvision Korea
T +82-1661-8138
sales.korea@hikvision.com

Hikvision Malaysia
T +60327224000
sales.my@hikvision.com

Hikvision Mexico
T +52 55 2624 0110
sales.mexico@hikvision.com

Hikvision New Zealand
T 09 217 3127
salesnz@hikvision.com

Hikvision New Panama
Sales.centralamerica@hikvision.com

Hikvision Pakistan
T +92-2135147526
support.pk@hikvision.com

Hikvision Philippines
support.ph@hikvision.com

Hikvision Poland
T +48 22 460 0150
info.pl@hikvision.com

Hikvision Russia
T +7-495-669-67-99
saleru@hikvision.com

Hikvision Romania
marketing.ro@hikvision.com

Hikvision Singapore
T +65 6684 4718
sg@hikvision.com

Hikvision South Africa
T +27 877018113
sale.africa@hikvision.com

Hikvision Spain
T +34 91737 16 55
info.es@hikvision.com

Hikvision Tashkent
T +99-87-1238-9438
uzb@hikvision.ru

Hikvision Thailand
sales.thailand@hikvision.com

Hikvision Turkey
T +90 216 52170 70
support.tr@hikvision.com

Hikvision UAE
T +971-4-4432090
salesme@hikvision.com

Hikvision UK & Ireland
T +44(0)1628 902 140
info.uk@hikvision.com

Hikvision Uzbekistan
T +998-71-233-55-50
uzbekistan@hikvision.com

Hikvision USA
T +1-909-895-0400
sales.usa@hikvision.com

Hikvision Vietnam
T +84 24 7300 7586
sale.vn@hikvision.com

For more information on Hikvision's subsidiary companies and branch offices, please visit www.hikvision.com.

Follow us on social media to get the latest product and solution information



Hikvision



HikvisionHQ



HikvisionHQ



Hikvision_Global



hikvisionhq



Hikvision Corporate Channel