



How to Access 3D22xxP Series Full-managed Network Switch

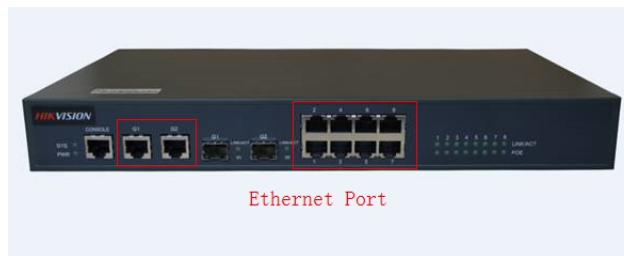
HIKVISION TECHNICAL SUPPORT TEAM

2017-08-23

How to Access 3D22xxP Series Full-managed Network Switch

3D22xxP is a full-managed network switch that support multiple access modes, including access through IP on webpage, through console port & telnet. This document is intended to show the method to access in different modes.

1. IP access
 1. The initial IP address of 3D22xxP is **192.168.0.1**, username: **admin**, password: **admin**
 2. Connect PC directly to Ethernet port of network switch, modify PC IP to **192.168.0.X** (except 192.168.0.1)

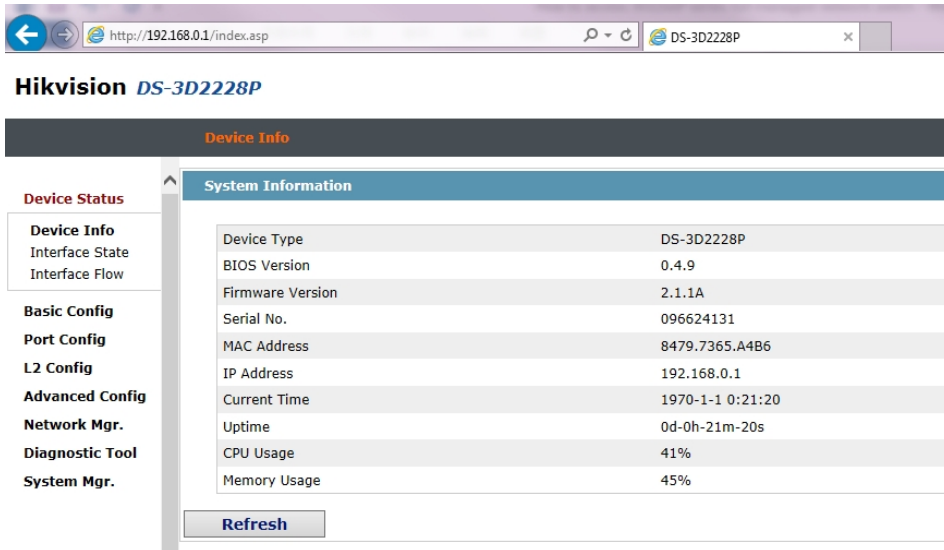


3. Open IE, input IP of network switch, press Enter, the IE interface will show as below



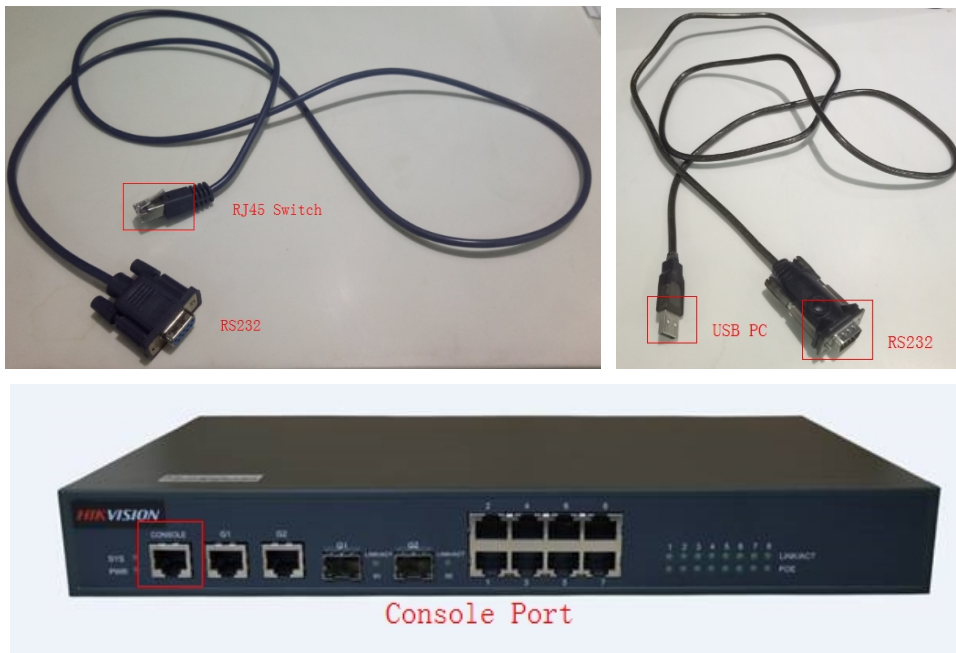
4. Input user name and password, click OK to login the webpage



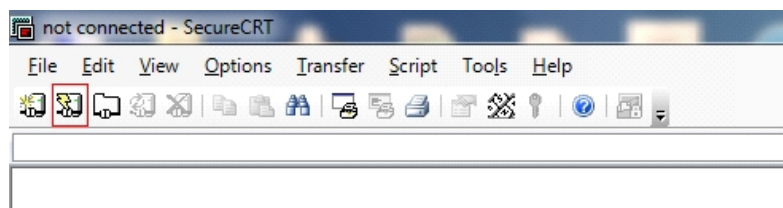


2. Console port

Operation over console port is like that with serial port, package of 3D22xxP contains a blue serial cable (with particular line sequence), connect RJ45 to the console port of switch, and USB to computer



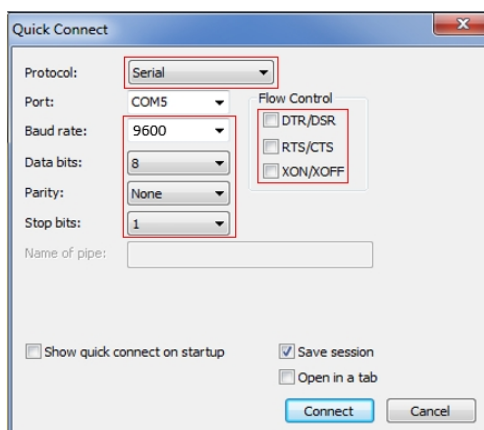
1. Open SecureCRT software and click Quick Connect



2. Choose Serial protocol, configure the parameters as below, disable flow control, and select

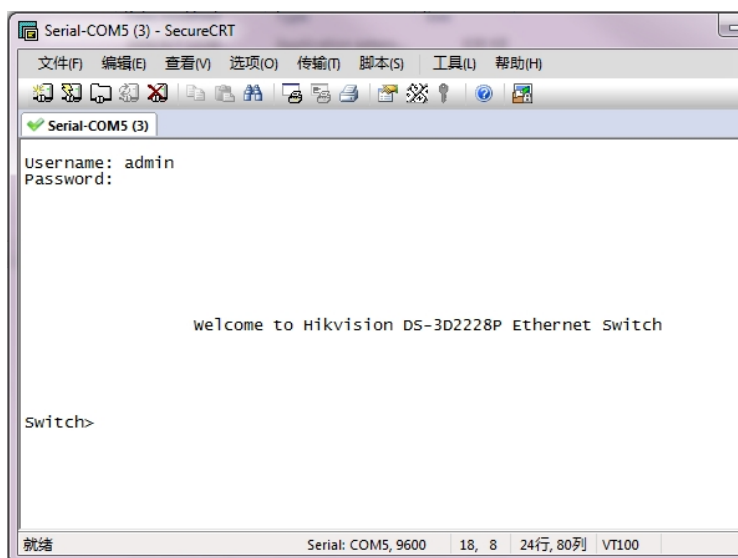


the right COM port



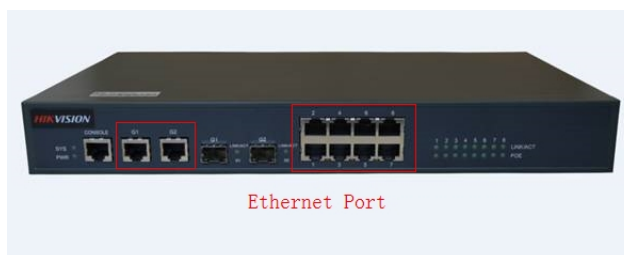
3. Enter operation interface

Device username and password is **admin, admin**. Input them and press Enter to login



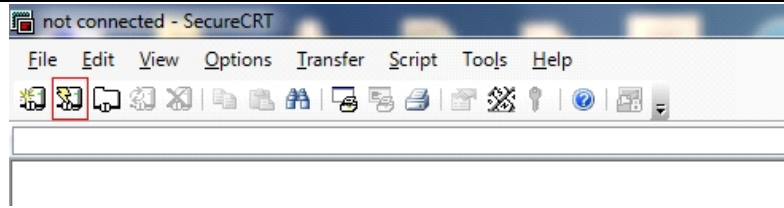
3. Telnet

1. The initial IP address of 3D22xxP is **192.168.0.1**
2. Connect PC directly to Ethernet port of network switch, modify PC IP to **192.168.0.X** (except 192.168.0.1)

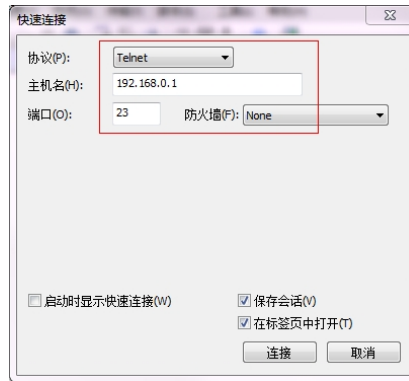


3. Open SecureCRT software and click Quick Connect



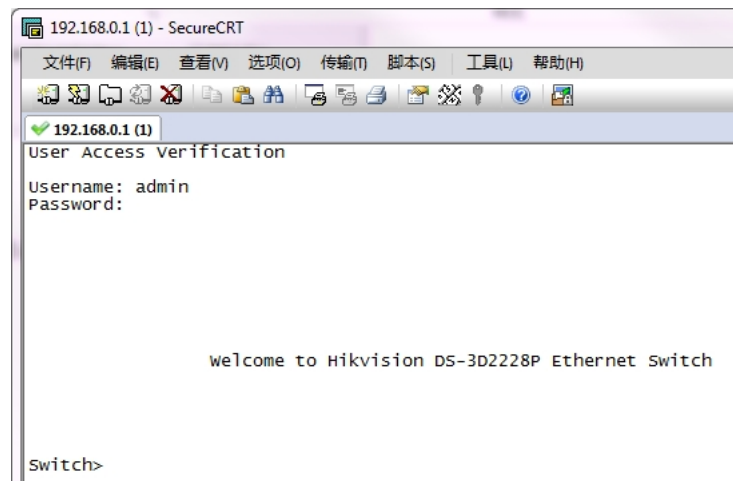


4. choose Telnet protocol, hostname 192.168.0.1, port 23, as below shows



5. Enter operation interface

Device username and password is **admin, admin**. Input them and press Enter to login



First Choice for Security Professionals Hikvision Technical Support

