

Title:	Thermal VCA Configuration Guidance	Version:	v1.0	Date:	6/21/2019
Product:	Thermal affordable series			Page:	1 of 7

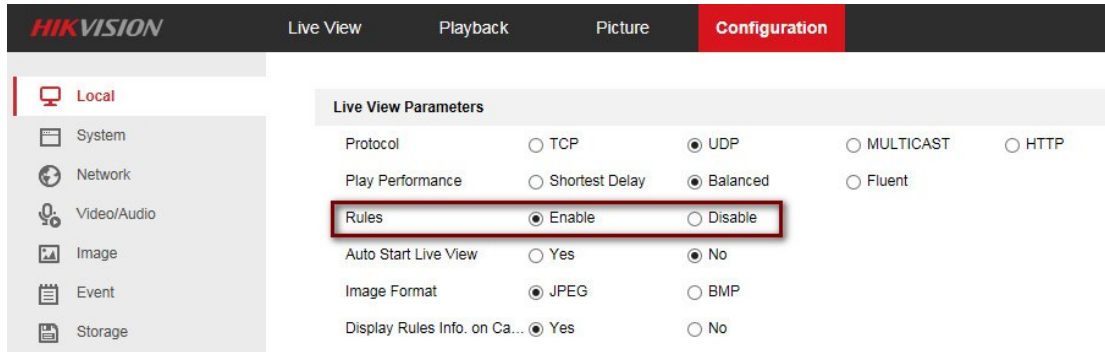
Thermal VCA Configuration Guidance

1. Make sure VCA Resource Type has been selected with Behavior Analysis option as default.

The screenshot displays the Hikvision web interface. The top navigation bar includes 'Live View', 'Playback', 'Picture', and 'Configuration' (which is highlighted in red). Below this, there are links for 'Upgrade & Maintenance', 'Log', 'System Service', and 'VCA Resource Type' (which is highlighted with a red box). The main content area is titled 'VCA Resource Configuration' and contains two radio button options: 'Temperature Measurement+Behavior Analysis' (which is selected) and 'Temperature Measurement+Fire Detection'. A red 'Save' button is located at the bottom of this section. On the left sidebar, the 'Maintenance' option is highlighted with a red box. Other sidebar options include Local, System, System Settings, Security, User Management, Network, Video/Audio, Image, Event, Storage, VCA, and Temperature Measurement.

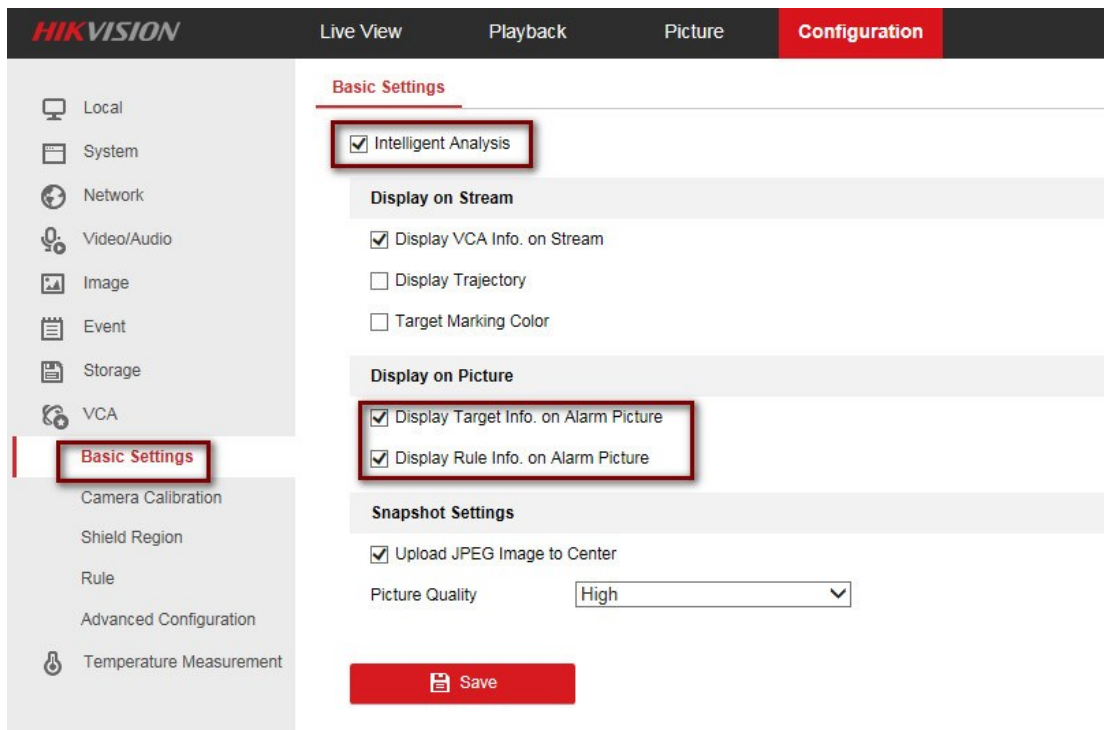
2. Make sure Rules are enabled.

Title:	Thermal VCA Configuration Guidance	Version:	v1.0	Date:	6/21/2019
Product:	Thermal affordable series			Page:	2 of 7




3. VCA Basic Settings.

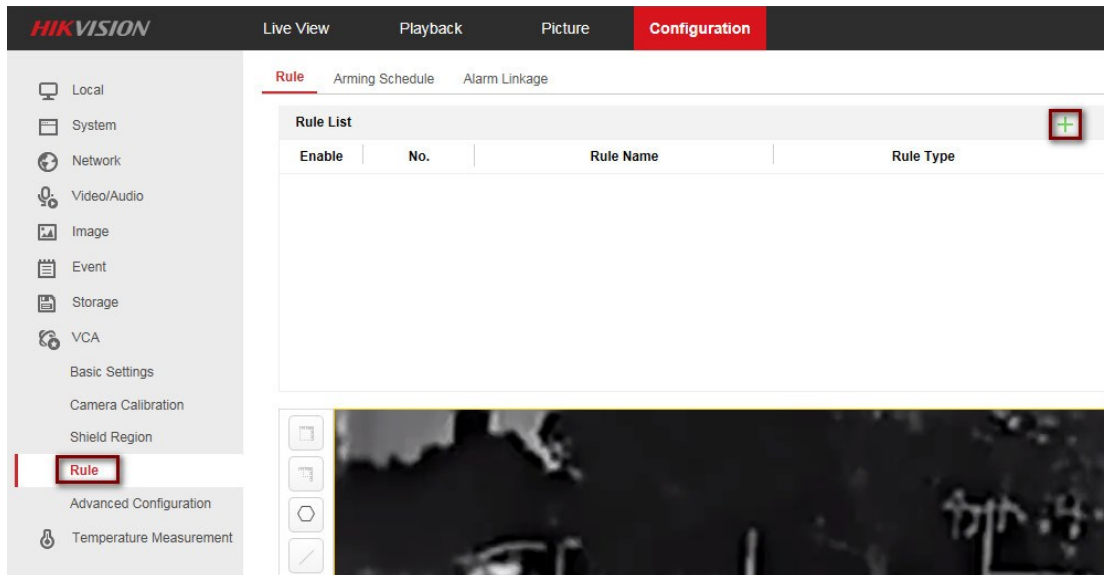
Check the checkbox to enable Intelligent Analysis function.



4. VCA Rule Settings.

- 1) Click  button to create one or more rules.

Title:	Thermal VCA Configuration Guidance	Version:	v1.0	Date:	6/21/2019
Product:	Thermal affordable series			Page:	3 of 7





- 2) Create two or three rules according to specific scene. It's suggest that rule1 covers distance which up to lens*3 meters. Here is the rule picture of successful case for reference.



- 3) Take example for line crossing shown as below.



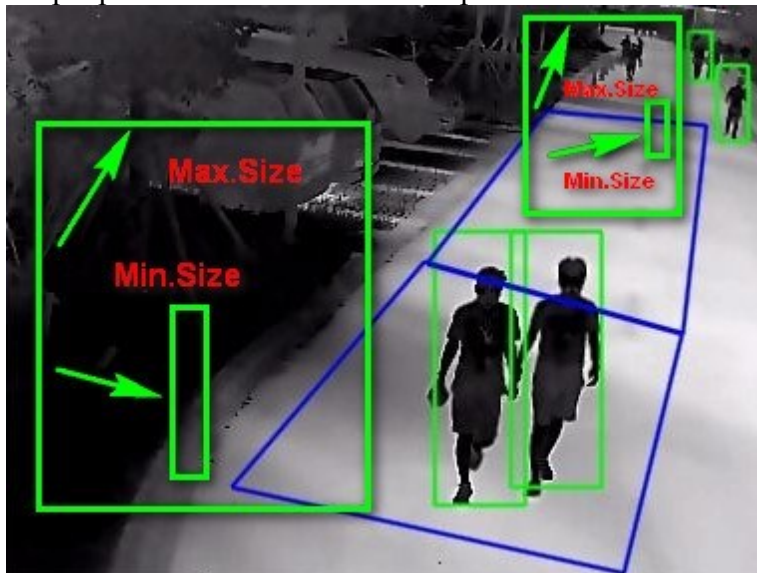
- 4) In order to detect the target more accurate, it's suggest to enable filter by pixel option. Click  button to set the max size which mainly filter target bigger than this size. Click  button to set the min size which mainly filter animal smaller than this size.

Title:	Thermal VCA Configuration Guidance	Version:	v1.0	Date:	6/21/2019
Product:	Thermal affordable series			Page:	4 of 7



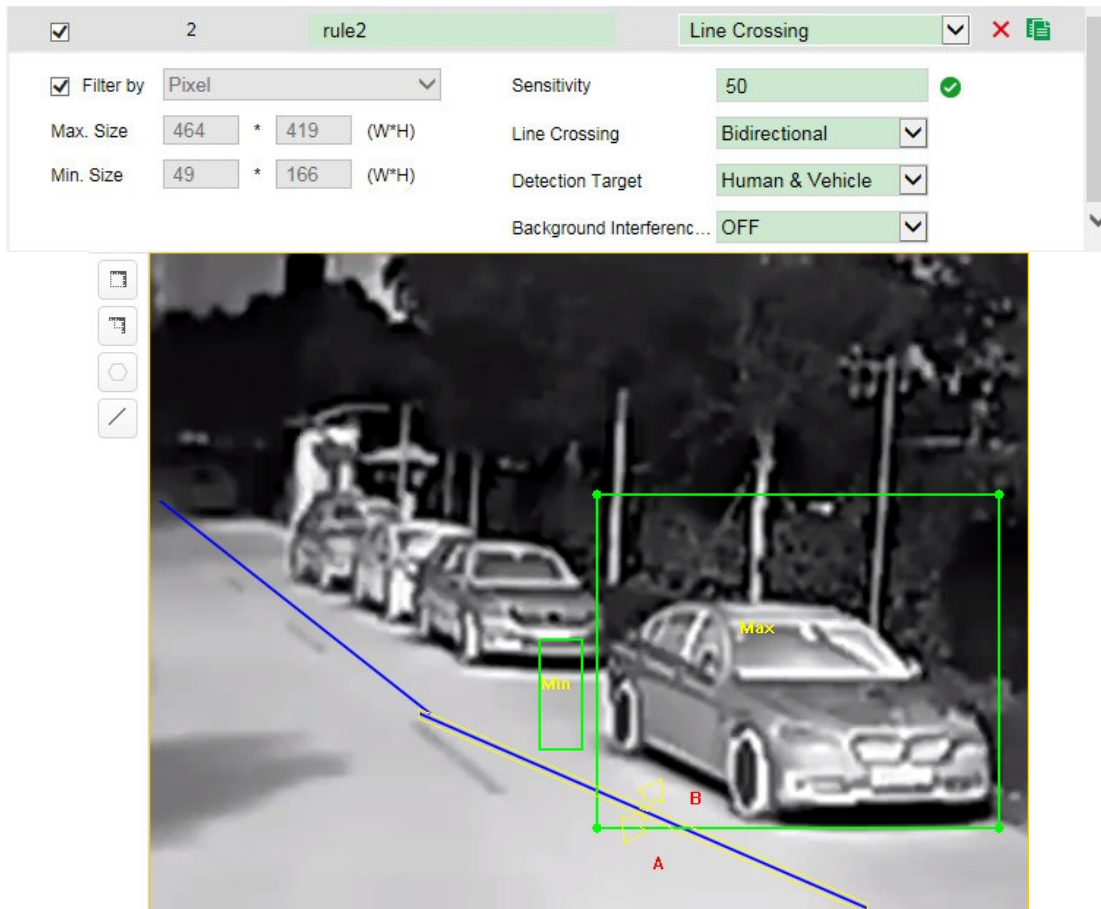
Note:

Due to same target in different areas has different pixel size, in order to know human size better, it's suggest to let people stand at the near and far point.



5) Use the same method to configure rule2 shown as below.

Title:	Thermal VCA Configuration Guidance	Version:	v1.0	Date:	6/21/2019
Product:	Thermal affordable series			Page:	5 of 7



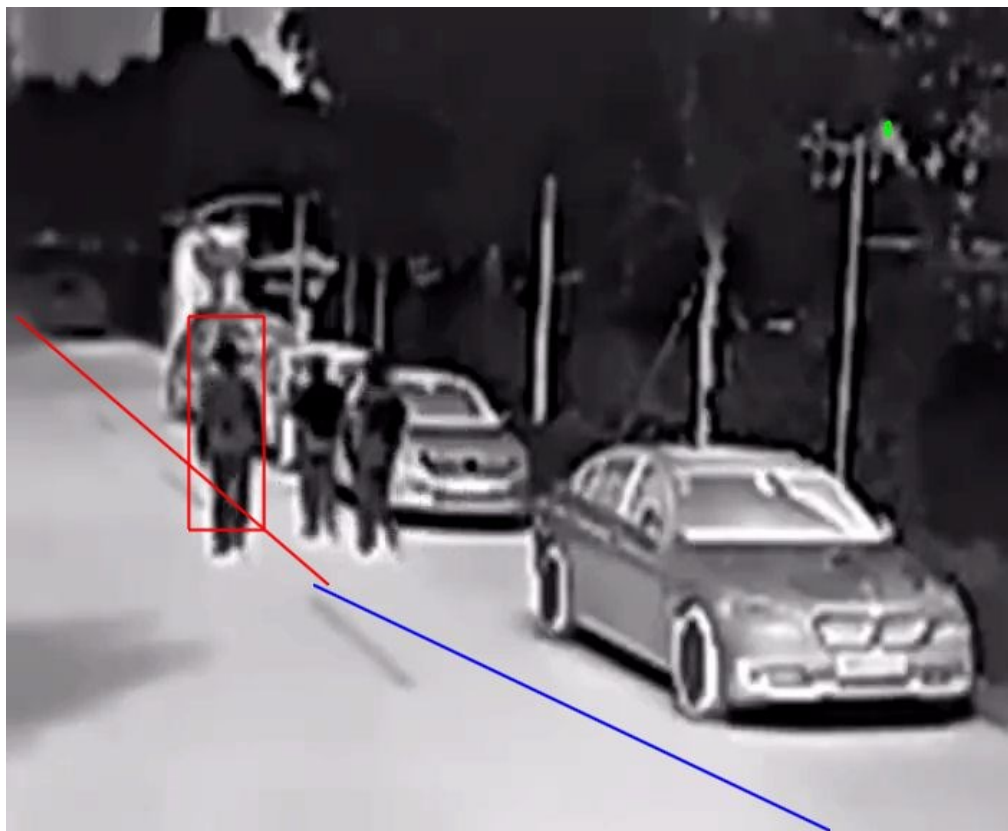
5. Shield Region settings.

If some areas no need to be detected, we can set the shield region to avoid false alarm such as car go through the scene.

Title:	Thermal VCA Configuration Guidance	Version:	v1.0	Date:	6/21/2019
Product:	Thermal affordable series			Page:	6 of 7



6. Check the VCA effect in live view.





Title:	Thermal VCA Configuration Guidance	Version:	v1.0	Date:	6/21/2019
Product:	Thermal affordable series			Page:	7 of 7

See Far, Go Further
HIKVISION Technical Support