



**How To Use Two-Way Audio Function
Quick Guide**

HIKVISION TECHNICAL SUPPORT TEAM

2018-4-18

How To Use Two-Way Audio

Description

Select Hikvision NVRs/DVRs have a two-way audio function that is used between an NVR and a client/Web page. It doesn't support two-way audio access to an IP camera directly.

NOTE: Camera must have a microphone and speaker and support two-way communication.

Two-way audio of any device supports one active connection only.

If you have a two-way audio connection to the NVR/DVR or the IP camera on the NVR/DVR, the system will return a "failed to initiate 2 way audio" error message if trying to initiate another two-way audio connection to the device from other software or via Web access.

Required Equipment

Compatible NVR/DVR, network switch, computer, stereo 3.5 mm (female) to 2 RCA plugs (male) cable, earphone/integrated microphone with 3.5 mm plug.

NOTE: The methods below are based on a stereo cable divided into two RCA plugs with a 3.5 mm jack and an earphone/integrated microphone with a 3.5 mm plug. The cable for your situation may differ, depending on your earphone plug.



How To Connect the Audio Line

1. Insert the red RCA plug into the NVR/DVR **AUDIO IN** port, and insert the white RCA plug into the NVR/DVR **AUDIO OUT** port.
2. Insert the 3.5 mm earphone plug into the cable's 3.5 mm female jack.

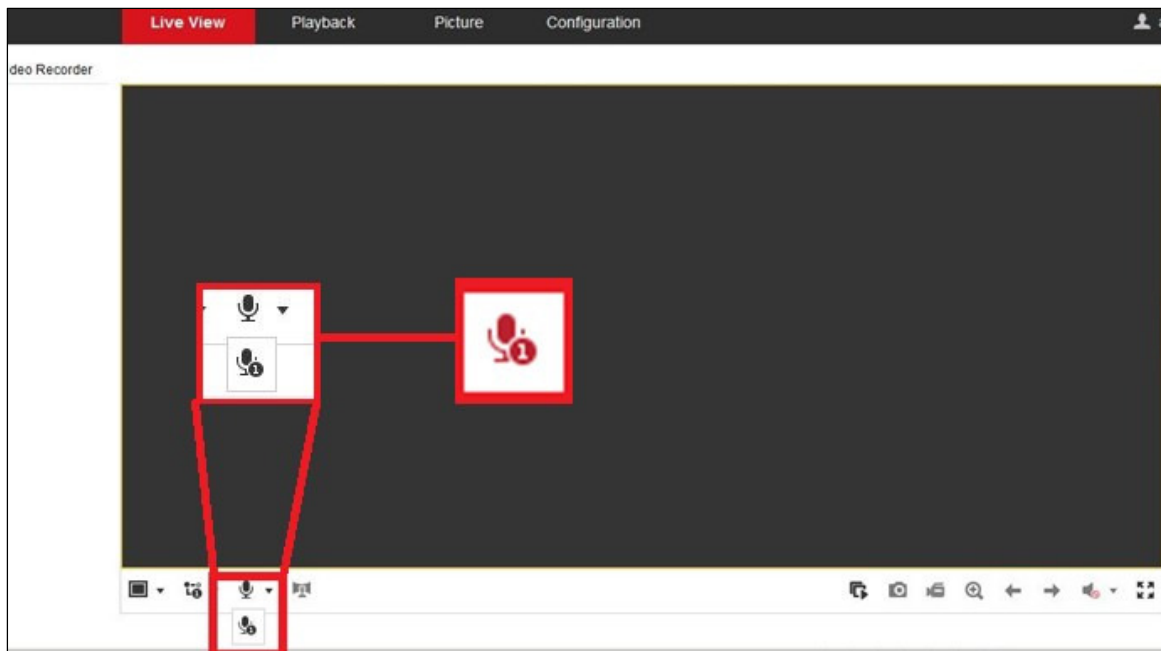


NOTE: Instead of an earphone/integrated microphone, users can also use a **microphone** to collect audio and connect a **preamp/loudspeaker** to the NVR's **AUDIO OUT** port to play the sound.

Some earphones play sound, but don't have an integrated **microphone**. Make sure to test your earphones for a microphone function.

How To Start Two-Way-Audio in the Web Page

1. Log in to the NVR Web page, and stay in the **Live view** interface.
2. Choose the two-way audio channel in the Web page.



NOTE: Some NVR series have more than one two-way audio channel. Check the chart below. For example, the DS-7700NI-I4 has two audio channels when clicking two-way audio in the Web page.

NVR	Channel number	Channel 1	Channel 2	Channel 3
96(32/64) I	2	HDMI1/VGA1	HDMI2/VGA2	
76/77 I/K	2	VGA	HDMI	
E	1	VGA/HDMI		
Netra	3	CVBS	HDMI	VGA

Two-way audio channels refer to audio output ports. For example, a DS-9632NI-I16 has two audio output ports (**AUDIO OUT 1, AUDIO OUT 2**). These two ports are linked with two-way audio channels 1 and 2 separately. Users can set the port that outputs the two-way audio. So, in the NVR Web page, there are two two-way audio channels of choice.



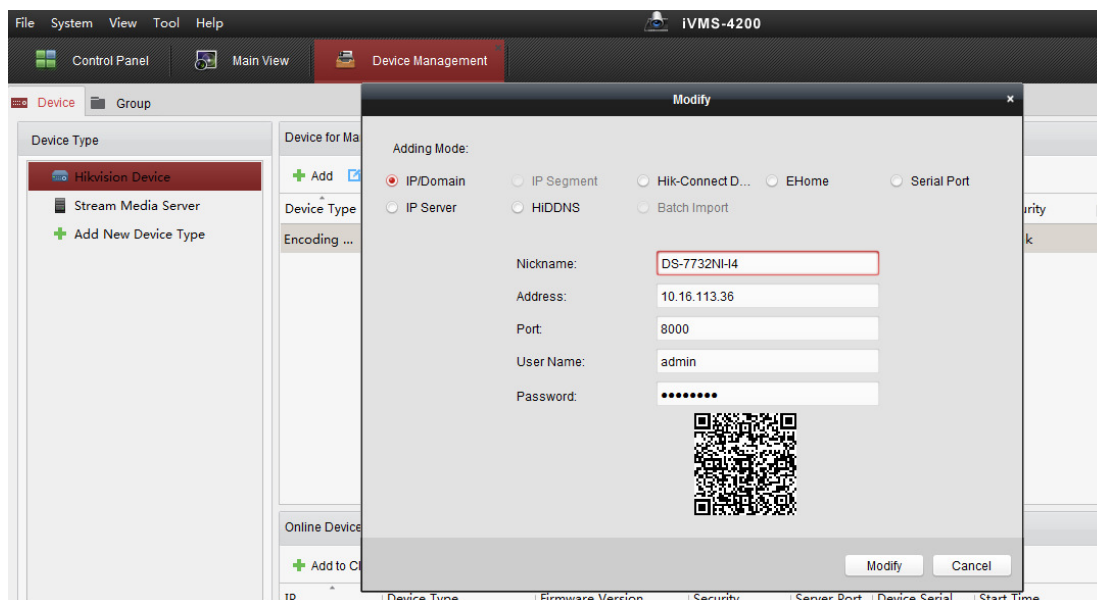
- The HDMI port can transmit an audio signal and work as an independent two-way audio port in NVRs/DVRs that support HDMI/VGA asynchronous output. However, the VGA port can't transmit an audio signal, so it has to be linked with one audio out port.

EXAMPLE: The DS-7700NI-I4 has one audio output port and one HDMI port. So in the NVR Web page, there's a choice of two two-way audio channels.

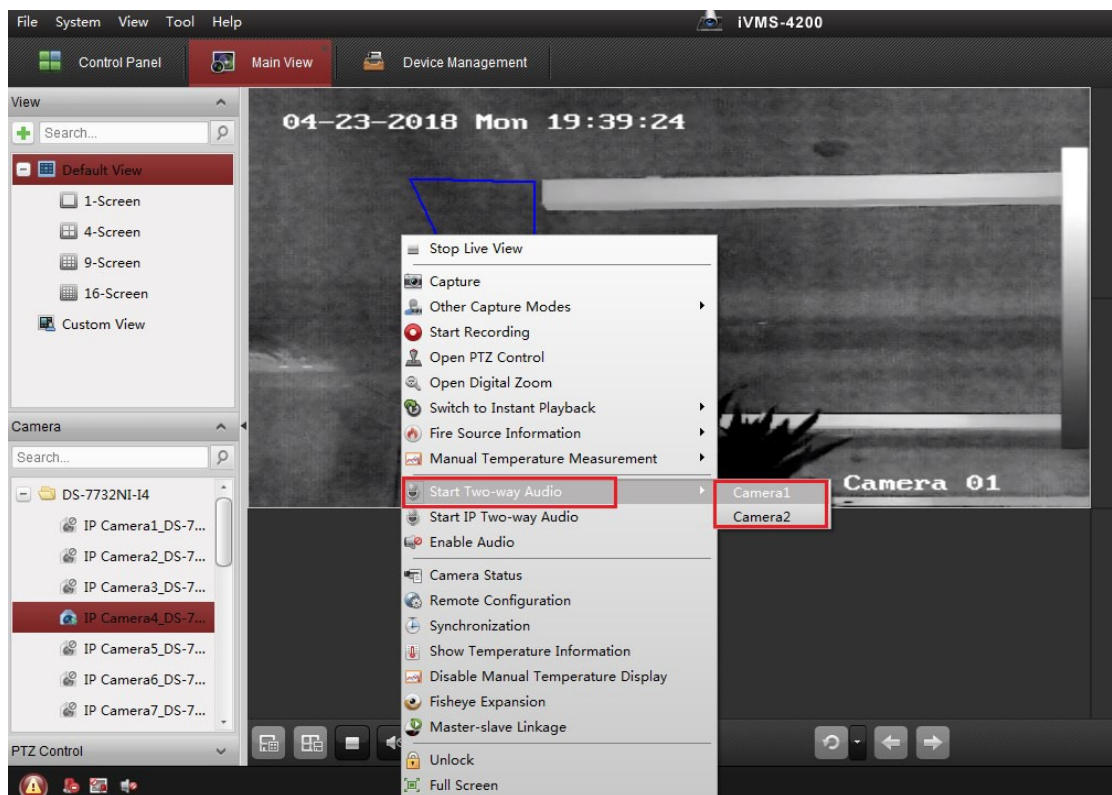


How To Start Two-Way Audio in the iVMS-4200 Client

- Add the NVR/DVR to the iVMS-4200, and make sure the NVR/DVR is online.

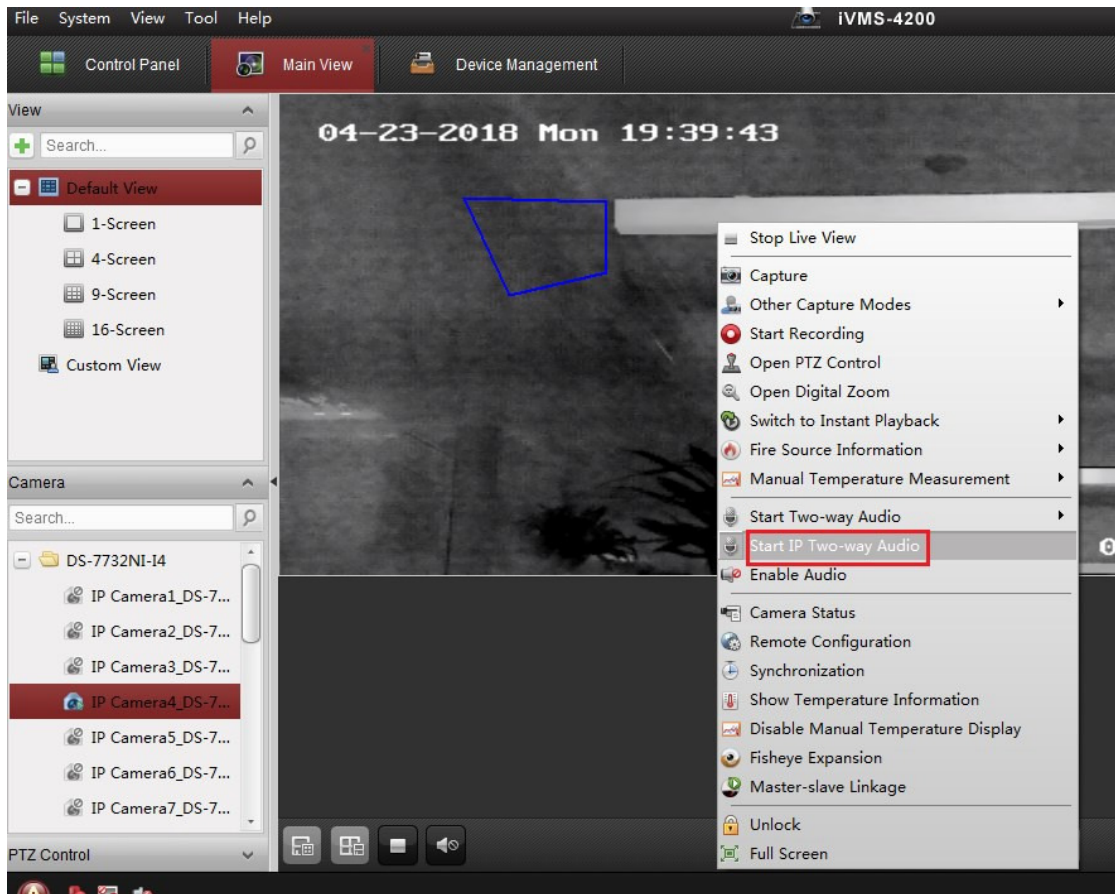


2. Switch to the **Main View** interface, and live view one of the channels.
3. Select any channel, and click the right mouse button.
4. Click **start two-way audio**, and there will be two options, **Camera1** and **Camera 2**. It means the NVR/DVR has two two-way audio channels, **channel1** and **channel2**. Select one to start the two-way audio.



How To Start IP Two-Way Audio in the iVMS-4200 Client

1. Add the NVR/DVR to the iVMS-4200, and make sure the NVR/DVR is online.
2. Switch to the **Main View** interface, and live view one of the channels.
3. Right click the channel for two-way audio, select **Start IP Two-way Audio**.



NOTE: **IP Two-Way Audio:** The NVR/DVR transmits a two-way audio signal between the **IP camera** and the **client**. Add the NVR/DVR to iVMS-4200, and start two-way audio with the IP camera connected to the NVR/DVR.

This option requires the NVR/DVR added as **IP/Domain**.

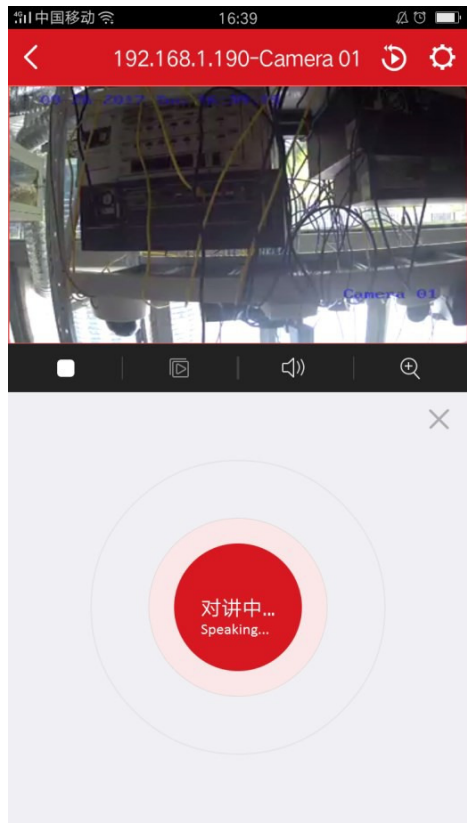
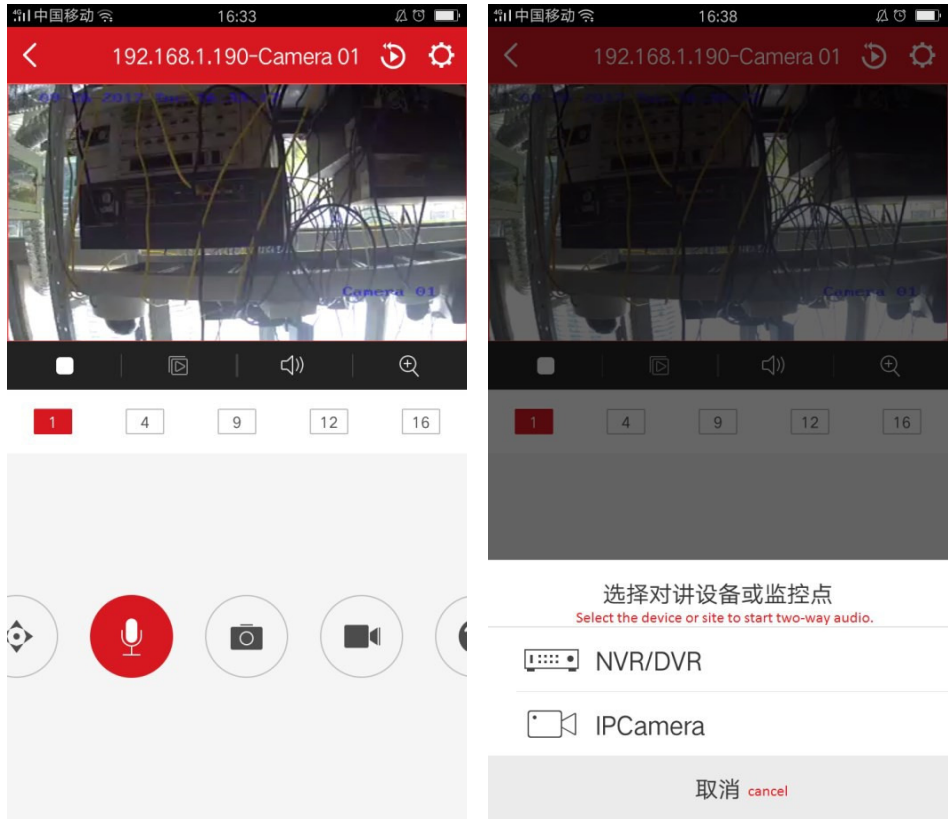
Requires firmware v3.1.x or greater.

How To Start Two-Way Audio in the Hik-Connect App

1. Add the NVR/DVR to Hik-Connect, and live view one NVR/DVR channel.
2. Click the "loudspeaker" icon.

NOTE: The NVR/DVR supports two-way audio to the IP camera when the NVR/DVR is added as **IP/Domain** in the Hik-Connect app.

I Series NVRs v4.1.54+ support two-way audio to the IP camera when the NVR is added as a device in a Hik-Connect account. This feature is supported for both a Hik-Connect p2p connection and a Hik-Connect DDNS connection.



First Choice for Security Professionals
Hikvision Technical Support