

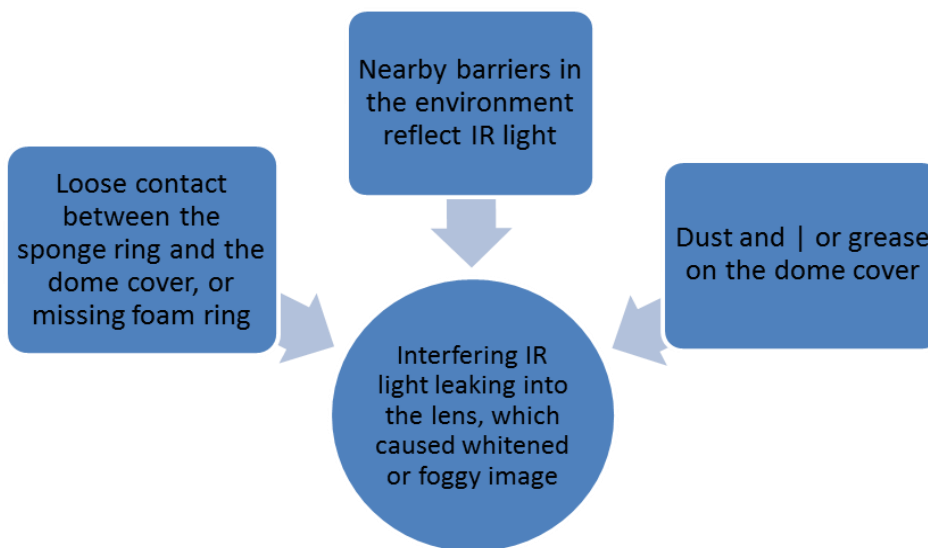
Title:	Causes of IR Glare (foggy image) and ways to avoid it				
Date:	06/11/2014	Version:	1.0	Pages	5
Product:	DS-2CD21xx-I IP camera				
Action Required:	Information only				

Sometimes the nighttime image of a DS-2CD21xx-I camera is “FOGGY” (**Figure 1**).



**Figure 1**

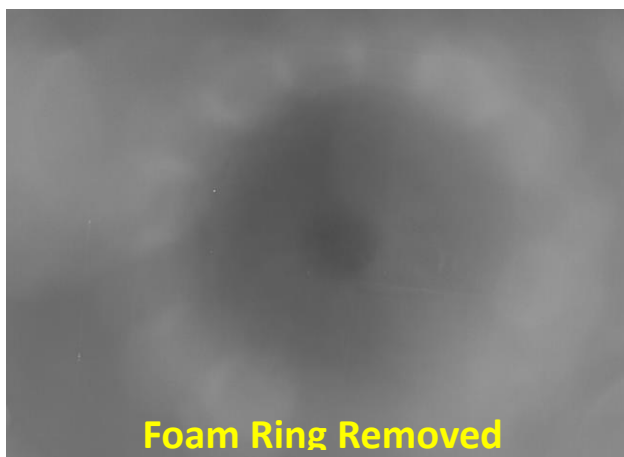
This is caused by **IR Reflection/Bleeding** into the lens. The possible causes for the IR reflection are listed in **Figure 2**.



**Figure 2**

Title:	Causes of IR Glare (foggy image) and ways to avoid it				
Date:	06/11/2014	Version:	1.0	Pages	5
Product:	DS-2CD21xx-I IP camera				
Action Required:	Information only				

The most severe case of IR Reflection is caused by the FOAM RING not being firmly pressed against the camera dome. This will create a “**CIRCULAR FOG**” effect (**Figure 3**).

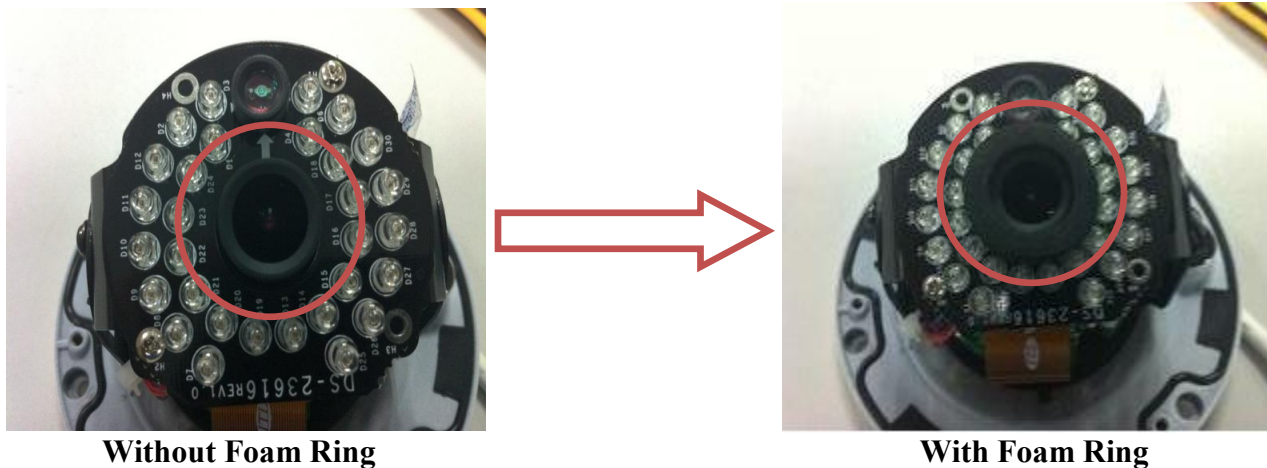


**Figure 3**

**Figure 4** (next page) shows the abovementioned **FOAM RING**.

The picture on the left shows a DS-2CD21xx-I **without a foam ring**. The picture on the right shows the same camera **with a foam ring**.

Title:	Causes of IR Glare (foggy image) and ways to avoid it				
Date:	06/11/2014	Version:	1.0	Pages	5
Product:	DS-2CD21xx-I IP camera				
Action Required:	Information only				



**Figure 4**

To minimize the chance of IR “bleeding” into the lens, please make sure that the dome bubble is sitting snug against of the foam ring. Please note, that upon good contact with the bubble, the foam ring will appear to be squished a little bit.

**Nearby objects and barriers** are the second biggest contributors to “FOGGY” images.



**Figure 5**

Title:	Causes of IR Glare (foggy image) and ways to avoid it				
Date:	06/11/2014	Version:	1.0	Pages	5
Product:	DS-2CD21xx-I IP camera				
Action Required:	Information only				

**Figure 5** shows the effect of a small piece of cardboard positioned only 4 inches away from the side of the camera. Even though not visible in the picture (the cardboard is outside of the camera's field of view), the effect is tremendous.

To avoid this situation:

- a. Avoid installing the cameras in tight corners.
- b. Use wall mount brackets to offset the cameras from walls and close surfaces.
- c. Try to rotate the camera as much away from background surfaces as possible

**Dirty Domes** can also cause IR "bleeding" and poor image.

Most commonly, the domes get covered with dust/dirt, raindrops stains, cobwebs...

Also avoid touching the dome during the installation, try to keep the protective film on the dome unit the very end. Touching the dome creates grease stains/spots on the bubble, which create blur.

**Figure 6** shows the effect of the abovementioned scenarios in a comparison with a clean dome.



**Figure 6 (continued on next page)**

Title:	Causes of IR Glare (foggy image) and ways to avoid it				
Date:	06/11/2014	Version:	1.0	Pages	5
Product:	DS-2CD21xx-I IP camera				
Action Required:	Information only				



**Figure 6 (Continued)**