

Title:	Adding HIKvision IP Cameras to Milestone X-Protect Enterprise				
Date:	11/29/2010	Version:	1.0	Pages	6
Product:	Compatible HIKvision IP Cameras				
Action Required:	Information Only				

Pre-installation requirements:

1. Install Microsoft Framework 3.5
2. Install Milestone software
3. Confirm with Milestone or HIKvision that the specific IP Camera firmware is compatible with Milestone X-Protect Enterprise

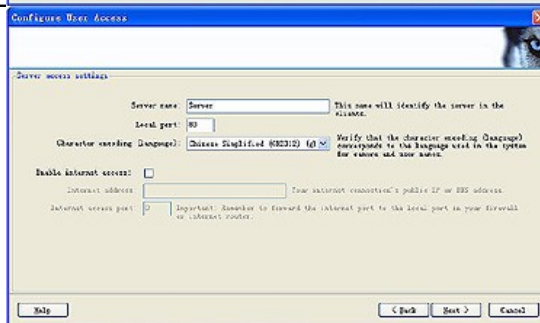
Start Milestone Management Application



Select "Configure User Access"

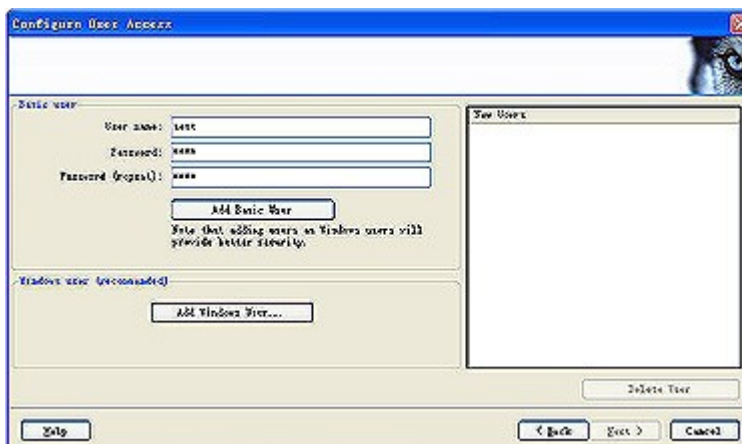


Enter "Server Access Settings"



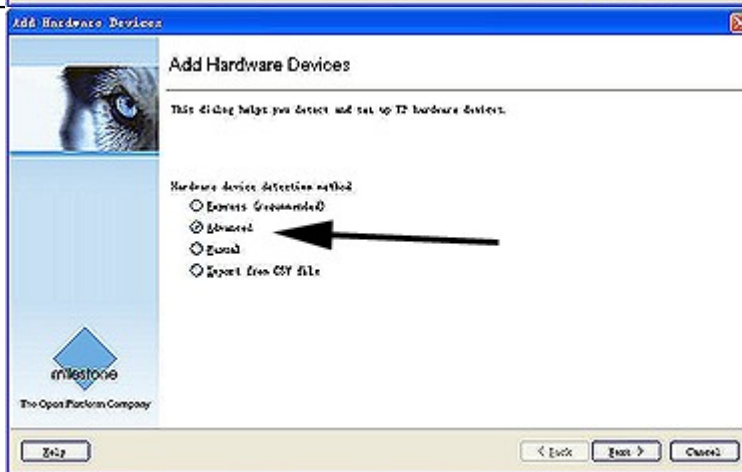
Title:	Adding HIKvision IP Cameras to Milestone X-Protect Enterprise				
Date:	11/29/2010	Version:	1.0	Pages	6
Product:	Compatible HIKvision IP Cameras				
Action Required:	Information Only				

Set User name and password,
then click **“ADD Basic User”**

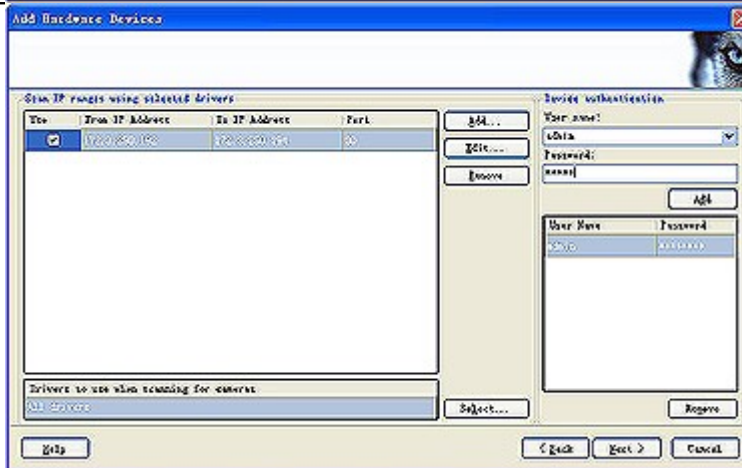


Keep clicking **“Next”** until you
return to configuration page

Enter **“Add Hardware Devices”**
Select **“Advanced”**

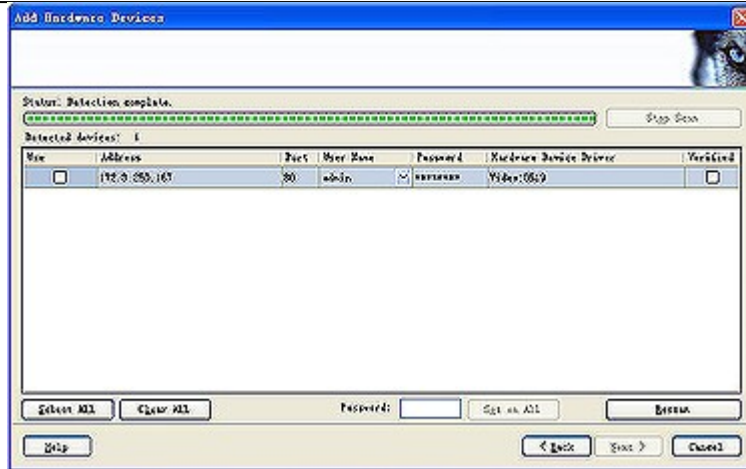


Define IP range of the camera,
user name and password.



Title:	Adding HIKvision IP Cameras to Milestone X-Protect Enterprise				
Date:	11/29/2010	Version:	1.0	Pages	6
Product:	Compatible HIKvision IP Cameras				
Action Required:	Information Only				

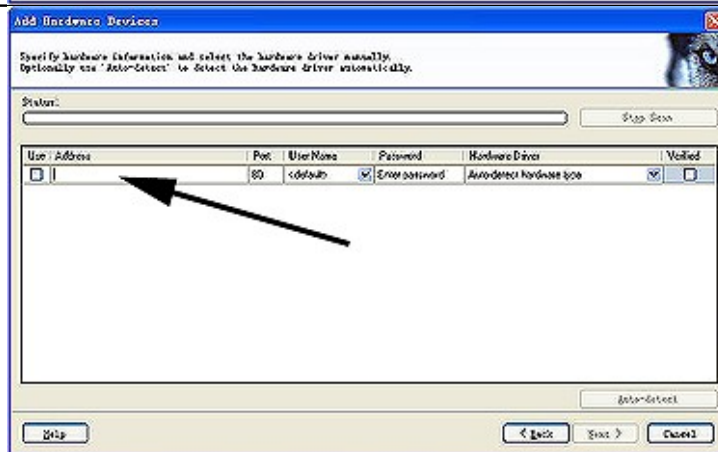
The application will search for the device accordingly.



If the device is not detected, return to "Add Hardware Devices" and select "Manual".



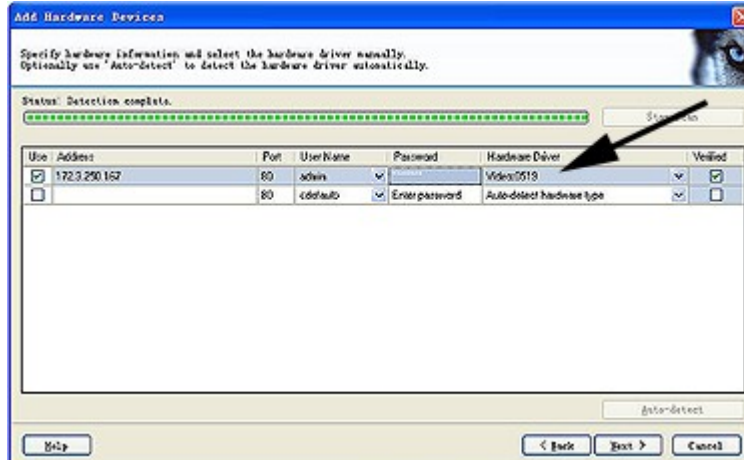
Define camera IP, user name and password, then click "Auto-detect".



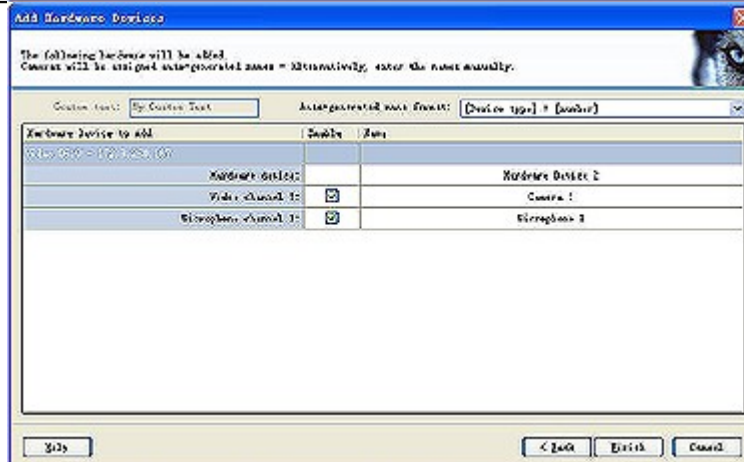
Title:	Adding HIKvision IP Cameras to Milestone X-Protect Enterprise				
Date:	11/29/2010	Version:	1.0	Pages	6
Product:	Compatible HIKvision IP Cameras				
Action Required:	Information Only				

Device is detected with “**Hardware Driver**” as “**Video:0519**”.

Click “**Next**”



Define a device name



Login to the Client software with the User name and password you created.

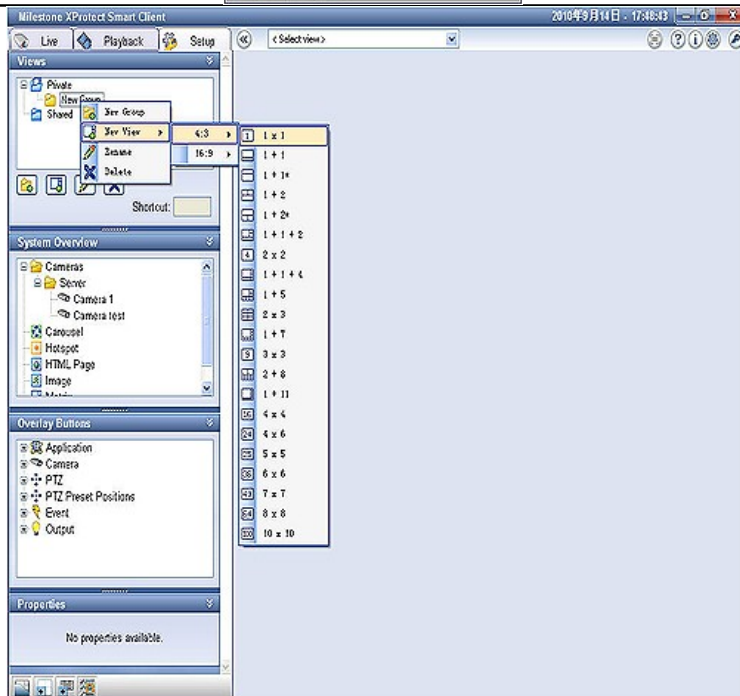


Title:	Adding HIKvision IP Cameras to Milestone X-Protect Enterprise				
Date:	11/29/2010	Version:	1.0	Pages	6
Product:	Compatible HIKvision IP Cameras				
Action Required:	Information Only				

Find the new Camera in the Setup Interface



Add new **Group** and then add the **View** to that new group.



Title:	Adding HIKvision IP Cameras to Milestone X-Protect Enterprise				
Date:	11/29/2010	Version:	1.0	Pages	6
Product:	Compatible HIKvision IP Cameras				
Action Required:	Information Only				

Click and Drag the IP Camera to the “View”

