

Title:	Adding HIKvision IP Cameras to Genetec				
Date:	11/29/2010	Version:	1.0	Pages	4
Product:	Compatible HIKvision IP Cameras				
Action Required:	Information Only				

Pre-installation requirements:

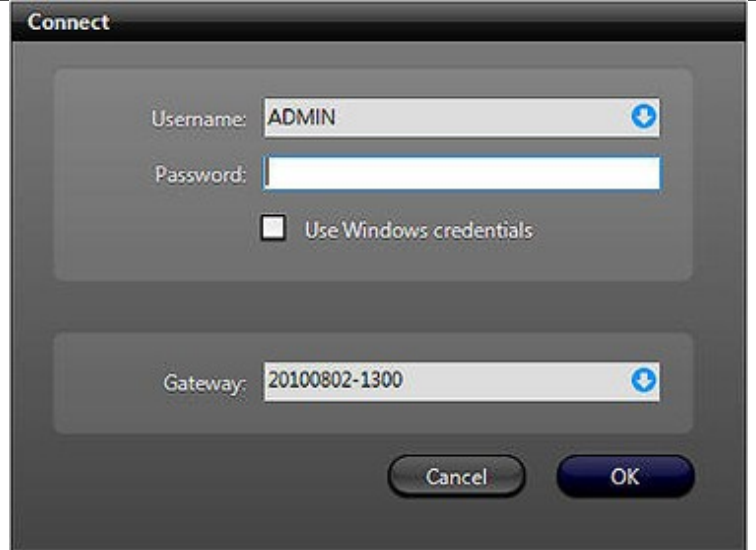
1. Confirm with Genetec or HIKvision that the specific IP Camera firmware is compatible with the specific version of Genetec Software.

Install **Genetec Server** and **Client** software



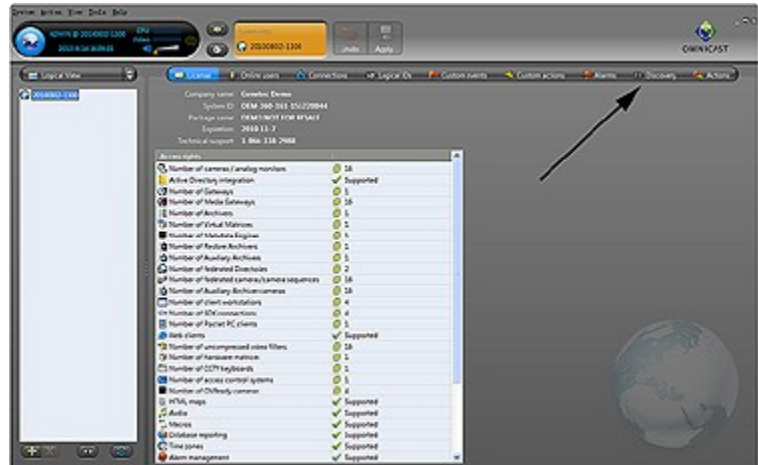
Logon to "**Genetec Config Tool**" software.

If your server and client are on the same PC, then the default password can be blank.

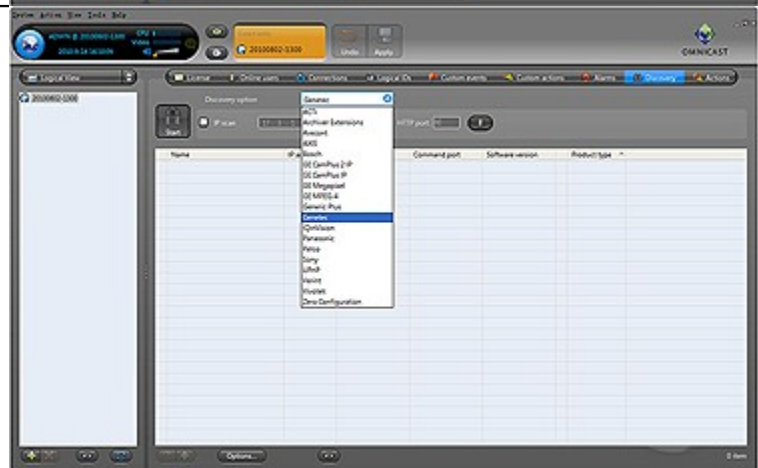


Title:	Adding HIKvision IP Cameras to Genetec				
Date:	11/29/2010	Version:	1.0	Pages	4
Product:	Compatible HIKvision IP Cameras				
Action Required:	Information Only				

Select “**Discovery**” after the “Config Tool” software is opened.



Select “**Genetec**” for the protocol.
You do not need to select IP Scan.

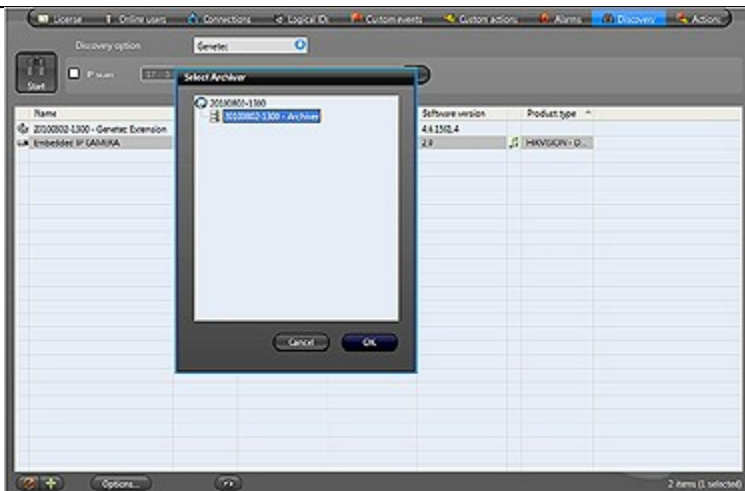


Double click on the device which has been discovered.



Title:	Adding HIKvision IP Cameras to Genetec				
Date:	11/29/2010	Version:	1.0	Pages	4
Product:	Compatible HIKvision IP Cameras				
Action Required:	Information Only				

Select the area and add the camera.



Adding Camera is completed.



Open Genetec View software.



Title:	Adding HIKvision IP Cameras to Genetec				
Date:	11/29/2010	Version:	1.0	Pages	4
Product:	Compatible HIKvision IP Cameras				
Action Required:	Information Only				

Drag the IP Camera to the preview area and the video scene will be displayed on screen.

